

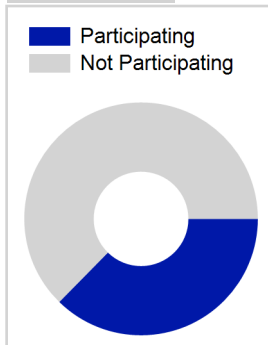
User Report: Donna Brown

Academic Year : 2014/2015, Term(s) : Full Year

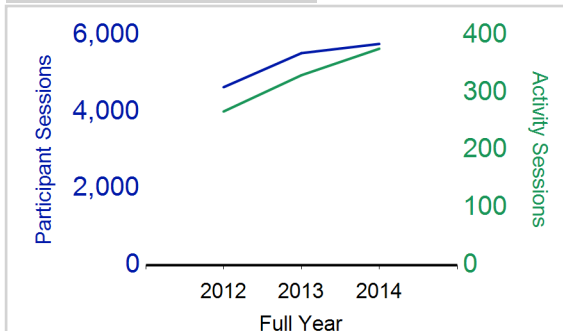
Putting Sport First

sportscotland
 the national agency for sport

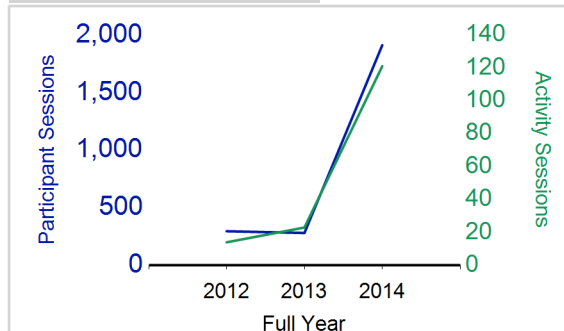
% Participating



Single School Activities¹



Multi School Activities¹

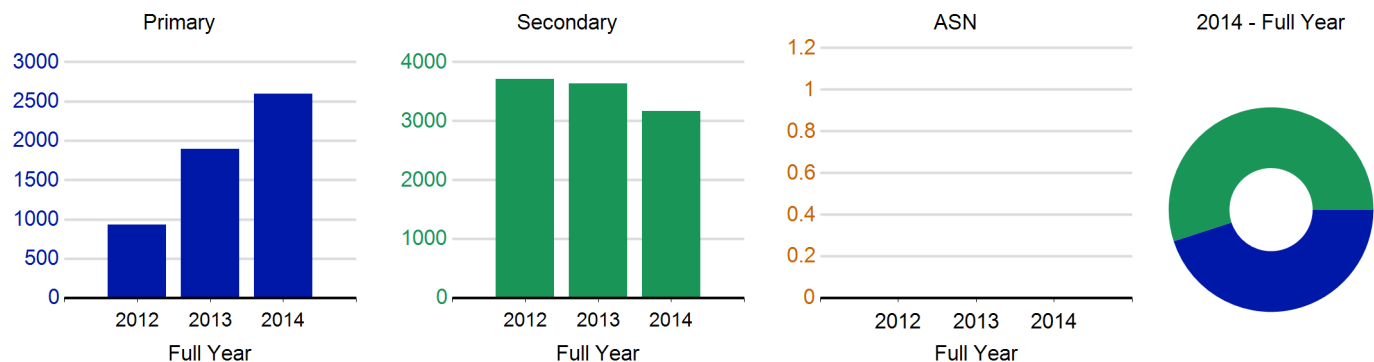


	2012 Full Term	2013 Full Term	2014 Full Term
Distinct Participants²	218	244	372
Total School Roll	1,060	1,032	996
% Participating	20.6%	23.6%	37.3%
School Club Links	20	27	21
Schools with at least one link	4	4	4
Clubs with at least one link	9	15	13

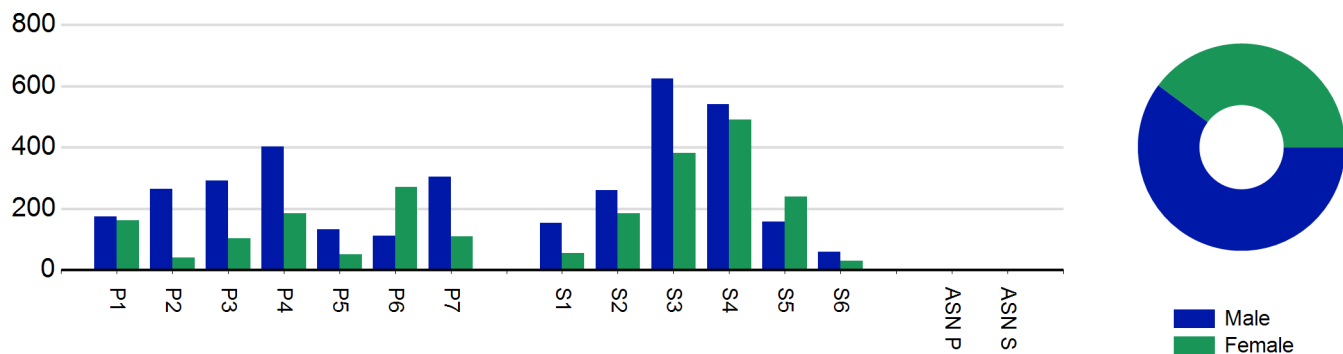
Single School Activities

Activity Sessions	267	330	376
% Purely voluntary	81%	77%	54%
Activity Session Blocks	31	42	43
Avg Activity Sessions/Block ³	9	8	9
Different Activities	9	15	12
Participant Sessions⁴	4,638	5,525	5,765
% Female	33%	39%	40%
Deliverer Sessions⁵	607	715	638
% Voluntary	91.4%	88.4%	69.0%
Secondary pupil deliverer sessions	23	116	124

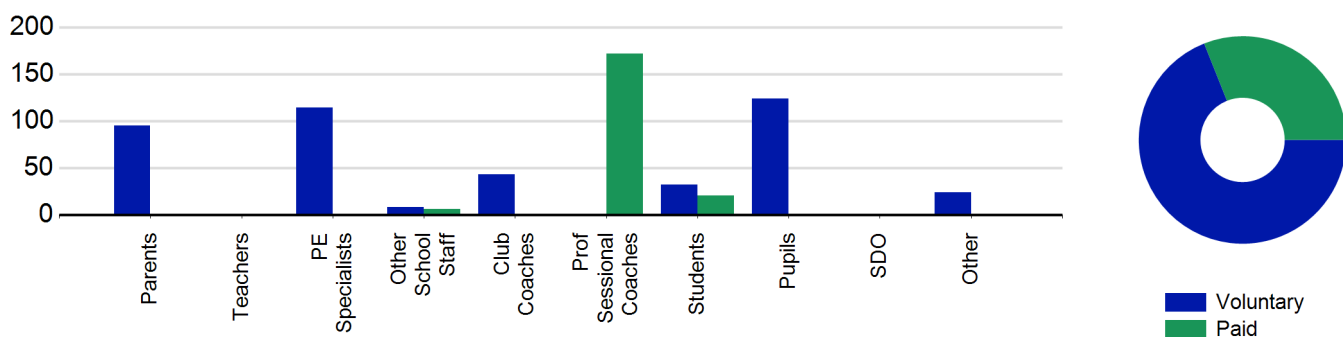
Single School: Participant Sessions⁴ by School Type



Single School: Participant Sessions⁴ by Year Group & Gender



Single School: Deliverer Sessions⁵ by Type and Paid/Voluntary



Single School: Top 10 Activities by Participant Sessions⁴



Notes

1. Activities are recorded in ASMO as 'Activity Session Blocks' which describe a group who meet to take part in an activity.

If a block involves pupils from several different schools, this is called a multiple school activity. The multiple school data shows the total amount of activity at multiple school sessions. Each school only consumes a portion of this activity. If a multiple school activity includes more than one coordinator's schools, the activity will show up in both coordinators reports. This will lead to multiple counting if we add up the multiple school activity reported under all the coordinators.

2. Distinct participants are pupils who have attended at least one session of Active Schools supported activity across the selected year/term (whether this was in a single or multiple school activity).

3. The Average Activity Sessions/Block figure shows the average length of a block (i.e. how many weeks did the average block run for?)

4. Participant Sessions are the 'visits' pupils have made to activities. These figures do not represent the distinct pupils, and should only be taken as indicative of participation.

5. Deliverer Sessions are the 'visits' deliverers have made to activities. These figures do not represent the distinct deliverers, and should only be taken as indicative of delivery. Distinct deliverer information is only available at the local authority level.

6. Figures with N/A are not available for the 2008-11 phase of Active Schools. Charts which refer to information pre 2011 will show a huge increase from 0 – this is because we cannot include any 2008-2011 data at this level.

User Report: Donna Brown

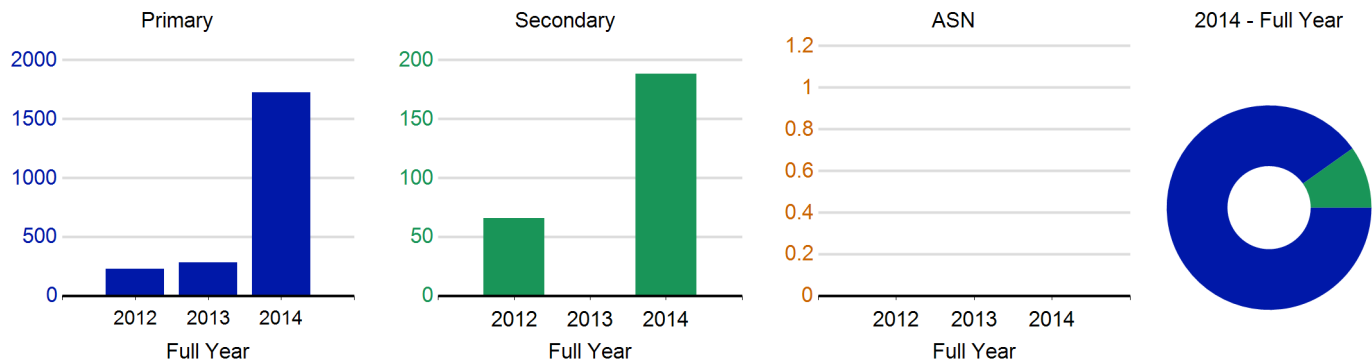
Academic Year : 2014/2015, Term(s) : Full Year

Putting Sport First

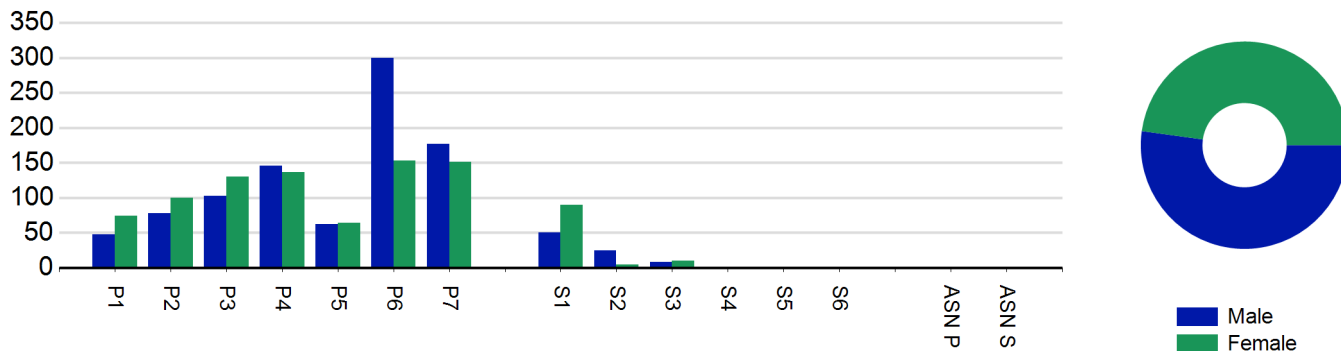
Multi School Activities

Activity Sessions	14	23	121
% Purely voluntary	57%	N/A	55%
Activity Session Blocks	2	3	19
Avg Activity Sessions/Block ³	7	8	6
Different Activities	2	1	13
Participant Sessions ⁴	296	281	1,911
% Female	31%	14%	48%
Deliverer Sessions ⁵	54	52	332
% Voluntary	88.9%	44.2%	75.6%
Secondary pupil deliverer sessions	N/A	N/A	20

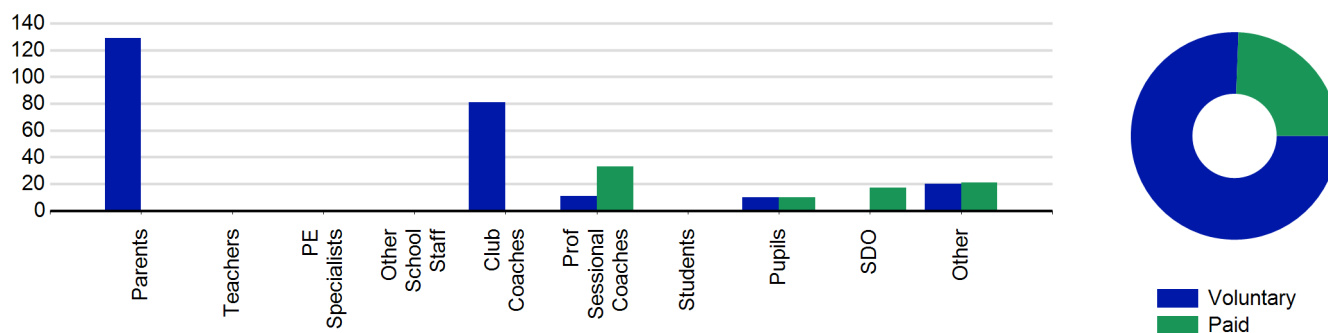
Multi School: Participant Sessions⁴ by School Type



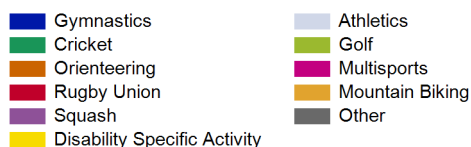
Multi School: Participant Sessions⁴ by Year Group & Gender



Multi School: Deliverer Sessions⁵ by Type and Paid/Voluntary



Multi School: Top 10 Activities by Participant Sessions⁴



Notes

- Activities are recorded in ASMO as 'Activity Session Blocks' which describe a group who meet to take part in an activity.
- If a block involves pupils from several different schools, this is called a multiple school activity. The multiple school data shows the total amount of activity at multiple school sessions. Each school only consumes a portion of this activity. If a multiple school activity includes more than one coordinator's schools, the activity will show up in both coordinators reports. This will lead to multiple counting if we add up the multiple school activity reported under all the coordinators.
- Distinct participants are pupils who have attended at least one session of Active Schools supported activity across the selected year/term (whether this was in a single or multiple school activity).
- The Average Activity Sessions/Block figure shows the average length of a block (i.e. how many weeks did the average block run for?)
- Participant Sessions are the 'visits' pupils have made to activities. These figures do not represent the distinct pupils, and should only be taken as indicative of participation.
- Deliverer Sessions are the 'visits' deliverers have made to activities. These figures do not represent the distinct deliverers, and should only be taken as indicative of delivery. Distinct deliverer information is only available at the local authority level.
- Figures with N/A are not available for the 2008-11 phase of Active Schools. Charts which refer to information pre 2011 will show a huge increase from 0 – this is because we cannot include any 2008-2011 data at this level.

User Report: Donna Brown

Academic Year : 2014/2015, Term(s) : Full Year

Putting Sport First

Single School Activities

Participant Sessions⁴ by Year Group & Gender

	Male	Female
P1	173	162
P2	264	40
P3	291	103
P4	402	184
P5	132	50
P6	112	270
P7	303	108
S1	152	54
S2	259	184
S3	624	382
S4	541	491
S5	158	238
S6	58	30
ASN P	0	0
ASN S	0	0
Total	3,469	2,296

Deliverer Sessions⁵ by Type

	Paid	Voluntary
Parents	0	95
Teachers	0	0
PE Specialists	0	114
Other School Staff	6	8
Club Coaches	0	43
Prof Sessional Coaches	172	0
Students	20	32
Pupils	0	124
SDO	0	0
Other	0	24
Total	198	440

Multi School Activities

Participant Sessions⁴ by Year Group & Gender

	Male	Female
P1	48	74
P2	78	100
P3	103	130
P4	146	137
P5	62	64
P6	300	153
P7	177	151
S1	50	90
S2	25	5
S3	8	10
S4	0	0
S5	0	0
S6	0	0
ASN P	0	0
ASN S	0	0
Total	997	914

Deliverer Sessions⁵ by Type

	Paid	Voluntary
Parents	0	129
Teachers	0	0
PE Specialists	0	0
Other School Staff	0	0
Club Coaches	0	81
Prof Sessional Coaches	33	11
Students	0	0
Pupils	10	10
SDO	17	0
Other	21	20
Total	81	251

Assigned Schools

School	PS Single School	PS Multi School	Club Count
Lhanbryde Primary School	1,880	762	5
Milnes High School	3,171	442	6
Milne's Primary School	197	1,320	6
Mosstodloch Primary School	517	597	4