

ESTABLISHING A NEW SCHOOL FOR SOUTH- EAST ELGIN

GRAHAM JARVIS

(Head of Lifelong Learning,
Culture & Sport)

PAUL WATSON

(Senior Education Adviser)

The Proposals

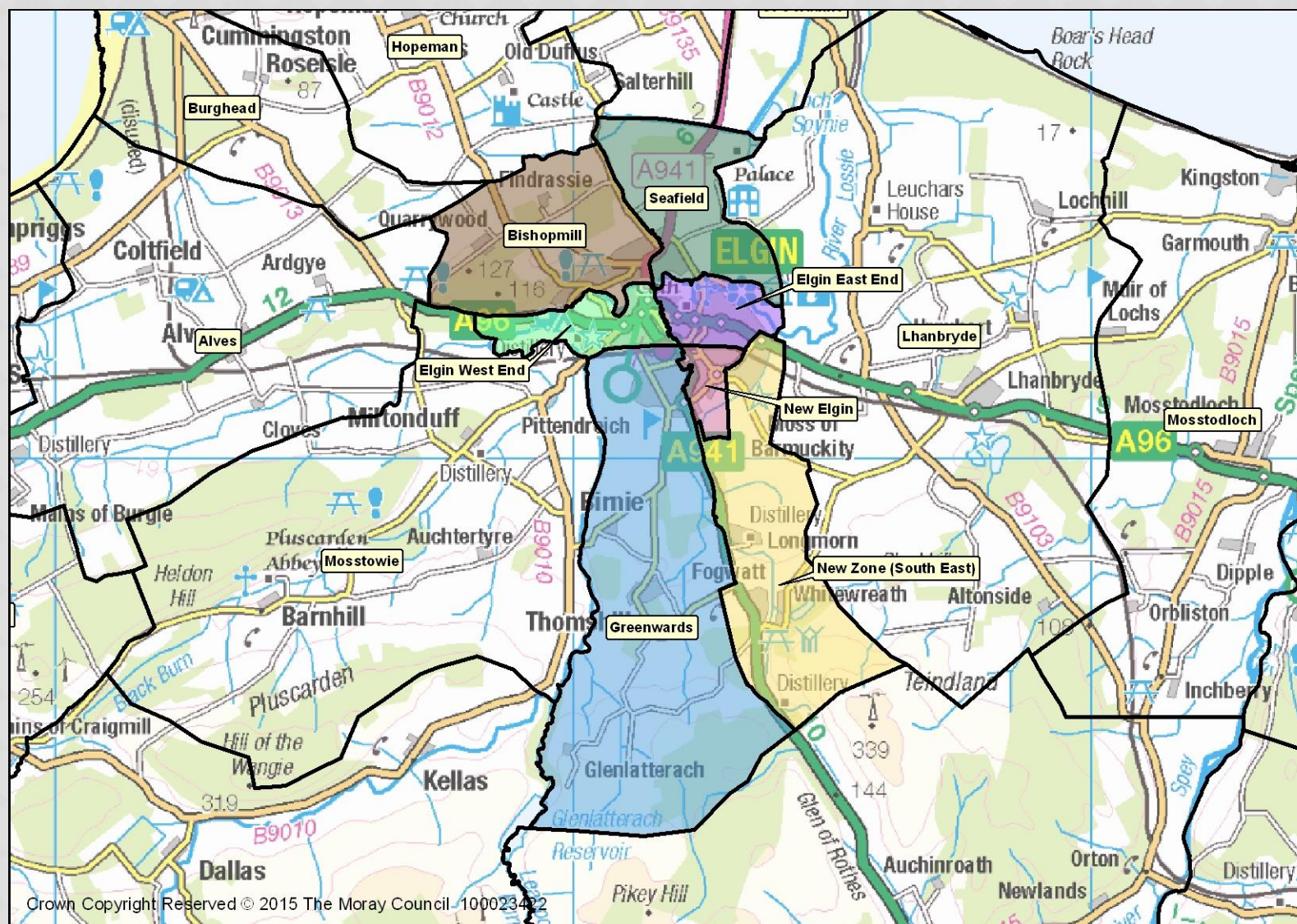
1.1 It is proposed to establish a new primary school, with nursery provision, to serve the agreed catchment area for the delineated geographical zone in south-east Elgin.

1.2 It is further proposed that the new school be established initially at a temporary site at East End Primary School Annexe until the new school building is complete. (The temporary accommodation will initially accommodate P1 children and will accommodate P1-3 in future years.)

1.3 It is intended that the implementation date for these proposals will be 15th August 2016, for the temporary accommodation, except that the nursery will only commence once the new school building opens.

1.4 It is proposed that the new school will relocate to its permanent site on the completion of the new school building. The target date for this is August 2018.

Elgin Primary Catchment Areas



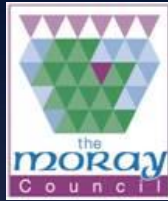
Crown Copyright Reserved © 2015 The Moray Council 100023422

Original Plans

- Pupils who are on the roll of a school prior to new zone changes being agreed will not be required to move school unless that is by parental choice and can remain in their chosen primary school.
- Children enrolled in an already established school who are resident in the proposed revised catchment areas will have the option to transfer to their new designated primary school once the new zones become effective.
- Once zones are approved new pupils enrolling at school will be zoned to the new school.
- After the new zone for south-east Elgin is agreed, and until a new school is constructed, children will continue to attend their existing zoned school.

Education Scotland Response

- The proposal has a number of educational benefits. It should lead to important improvements in the quality of learning environments for children, along with improved transitions for children from early learning and childcare settings to primary one at school.
- There are reasonable concerns regarding New Elgin Primary School which is currently facing challenges in terms of overcrowded dining facilities, lack of flexible and social learning spaces and traffic management. The Council should address concerns of stakeholders at New Elgin Primary School, particularly in relation to the interim period before any new school is established.
- The Council should provide clear guidance on its approach to the placement of siblings, particularly where families may be split as a result of the proposed rezoning.



Options Considered

1. No action until new school opens
2. Extend New Elgin.
3. Move New Elgin pupils to temporary accommodation at Greenwards.
4. Move P7 to Elgin High.
5. Establish new school for P1, from new school zone only, based in temporary accommodation at East End Annexe.

Projected Rolls - Existing Schools

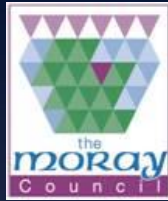
School	Physical Capacity	2015 Census	2016	2017	2018
East End	294	203	255	299	342
Greenwards	462	343	350	354	370
New Elgin	561	553	603	641	674

Projected Rolls – New School

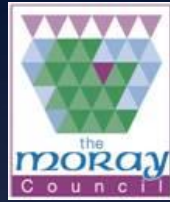
School	Physical Capacity	2015 Census	2016	2017	2018
East End	294	203	250	289	327
Greenwards	462	343	350	354	370
New Elgin	561	553	559	555	534
S-E School	150		51	100	143

Educational Benefits

- Pupils who are resident within the delineated zone for the new school will be able to attend their zoned school and be taught with peers from their community.
- Positive impact on the balance between the numbers of pupils in the Elgin primary school communities which will alleviate projected pupil roll pressures across Elgin.
- Establishing the new school from August 2016, in temporary accommodation, will enable the P1 children from the new catchment area to be part of the new school from day one.
- Children will be able to make seamless progress through primary school and not experience any discontinuity in their learning from moving to a new school during their time at primary school.

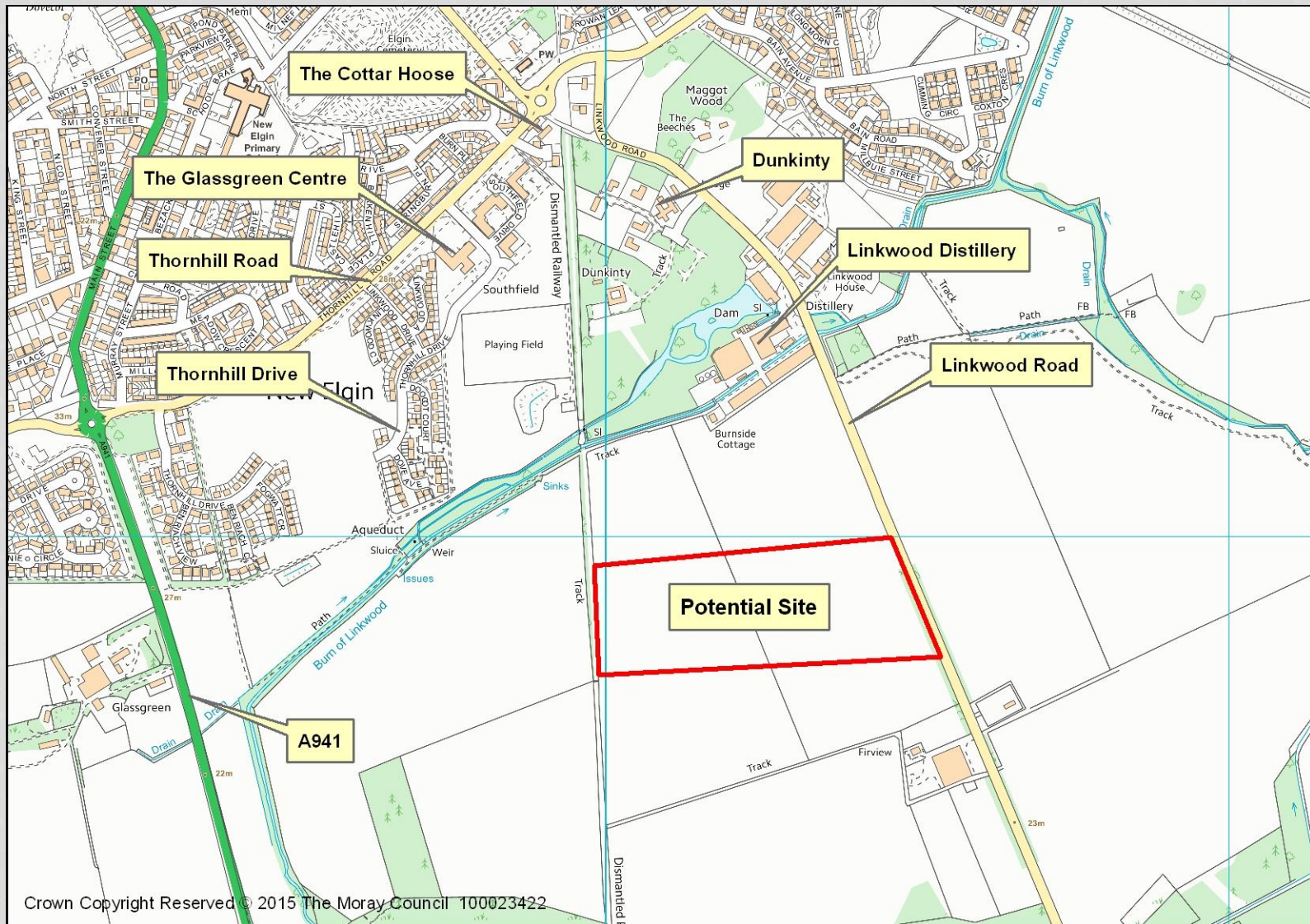


Educational Benefits



- Appointing a head teacher and school staff for August 2016 will enable them to develop a curriculum rationale pertinent to the new school. They will also have a major influence over school building design and resource provision.
- The children and staff will have a major role in establishing the vision, values and ethos for the new school.
- The children, staff and parents will also be able to play a key role in influencing the design and layout of the new school.
- The temporary accommodation would be resourced to the same high standard as any new school building including high quality ICT provision.

Proposed School Location



New School (Design/Build etc)







































Transport Arrangements



© Andrew's Bus Stop

Education and Social Care

Ambitious to Achieve Excellence Together

How to Respond

Responses to the consultation should be made by writing to:

South-East Elgin Primary School Consultation
The Moray Council
Community Support Unit
High Street
Elgin
IV30 1BX

- or by e-mail to: futureschools@moray.gov.uk
- or by completing the consultation response form
- or by completing the on-line consultation form
(link at www.moray.gov.uk/rezoning)

All responses must be submitted by **5.00pm on Thursday 4th February 2016** for them to be taken into account as part of the consultation.



Questions?