

SECONDARY SCHOOL REZONING

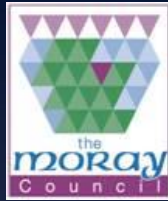
PAUL WATSON
(Senior Education Adviser)

The Proposals

1. It is proposed to vary the zones (catchment areas) of Forres Academy, Lossiemouth High School, Elgin Academy, Elgin High School and Milne's High School based on geographical areas which are delineated on plans.
2. It is proposed that the implementation date for this proposal will be 24th October 2016.

Background

- June 1975 Grampian Regional Council confirmed that where zones had been designed for schools these should be confirmed for these schools and in all other cases children would attend their nearest school.
- Catchment areas for Forres Academy, Elgin Academy and Milne's High School were inherited by The Moray Council from Grampian Regional Council which in turn had inherited these from Moray & Nairn County Council.
- Catchment area for Elgin High School was established in June 1977 by Grampian Regional Council.
- Catchment area for Lossiemouth High School was established in 1972 and amended in July 1981 (dual zoning of Burghead).
- Zone maps were produced by Grampian Regional Council in February 1996, just prior to disaggregation.



Reasons for Proposals

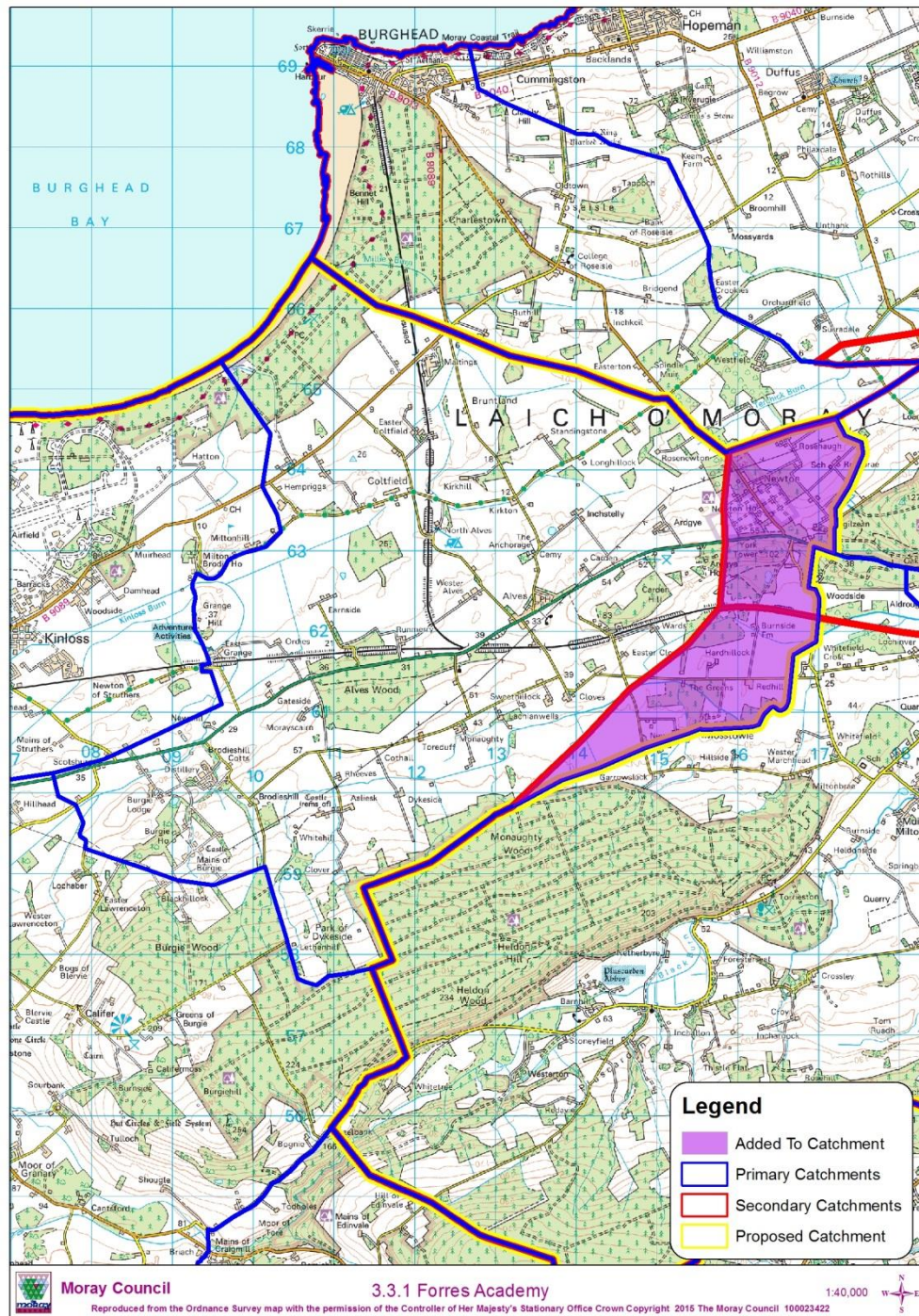
- Revised catchment areas for Elgin Primary schools
- The whole of the zone of a primary school should form part of the zone of one secondary school only
- Potential financial benefits for the Council
- Potential educational benefits for children and young people

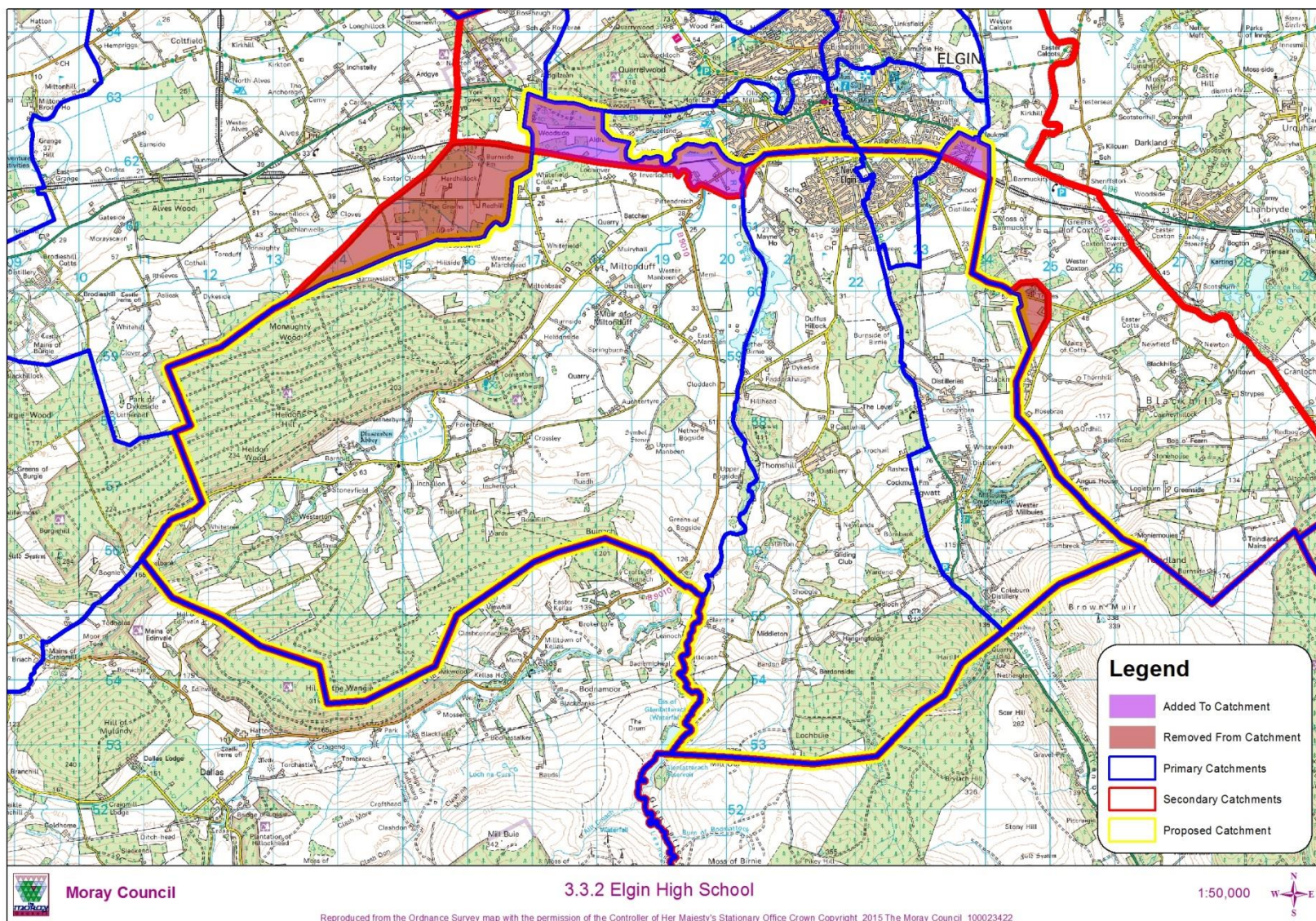
EDUCATIONAL BENEFITS

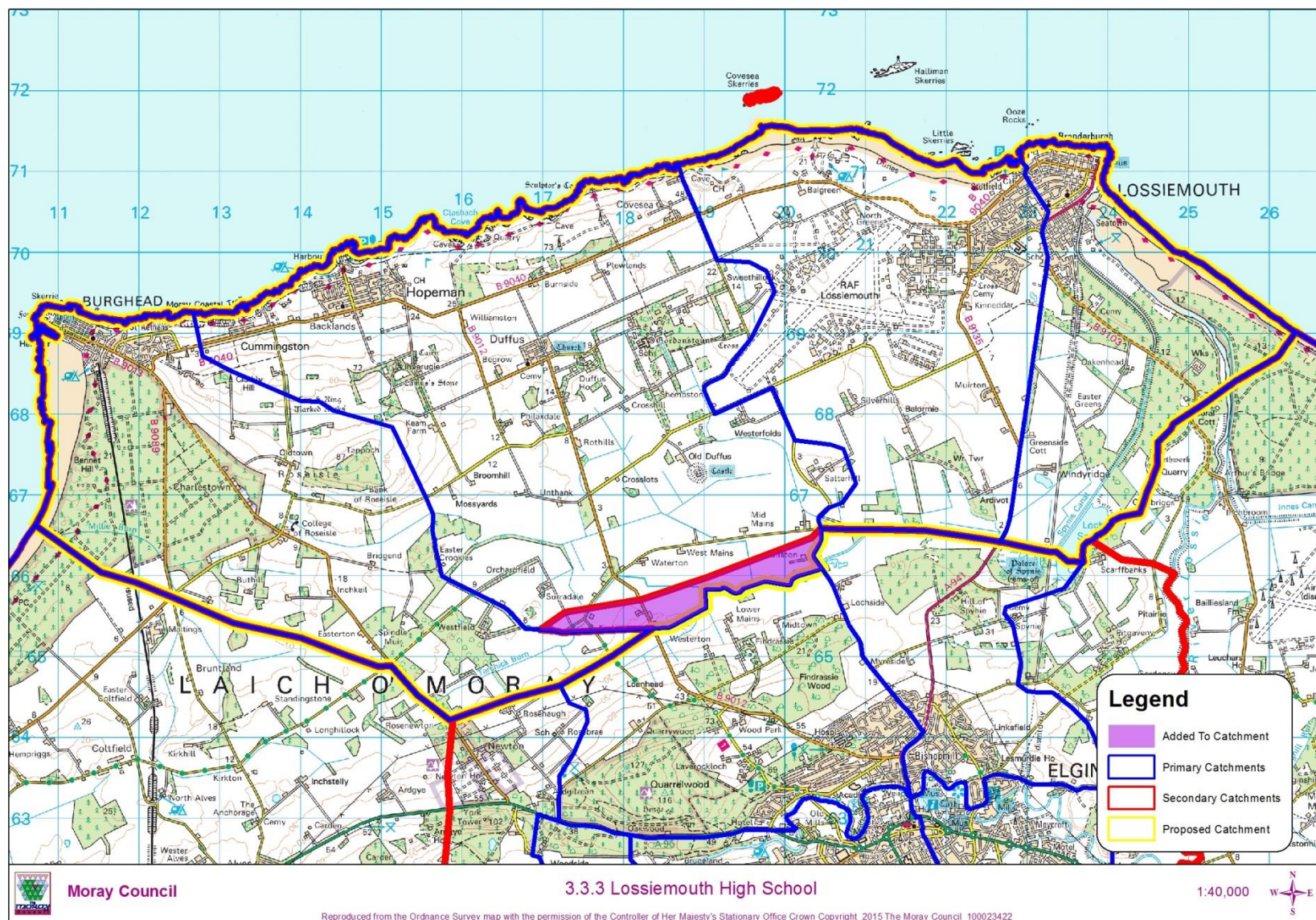
Zoning all pupils to the ASG secondary school will:

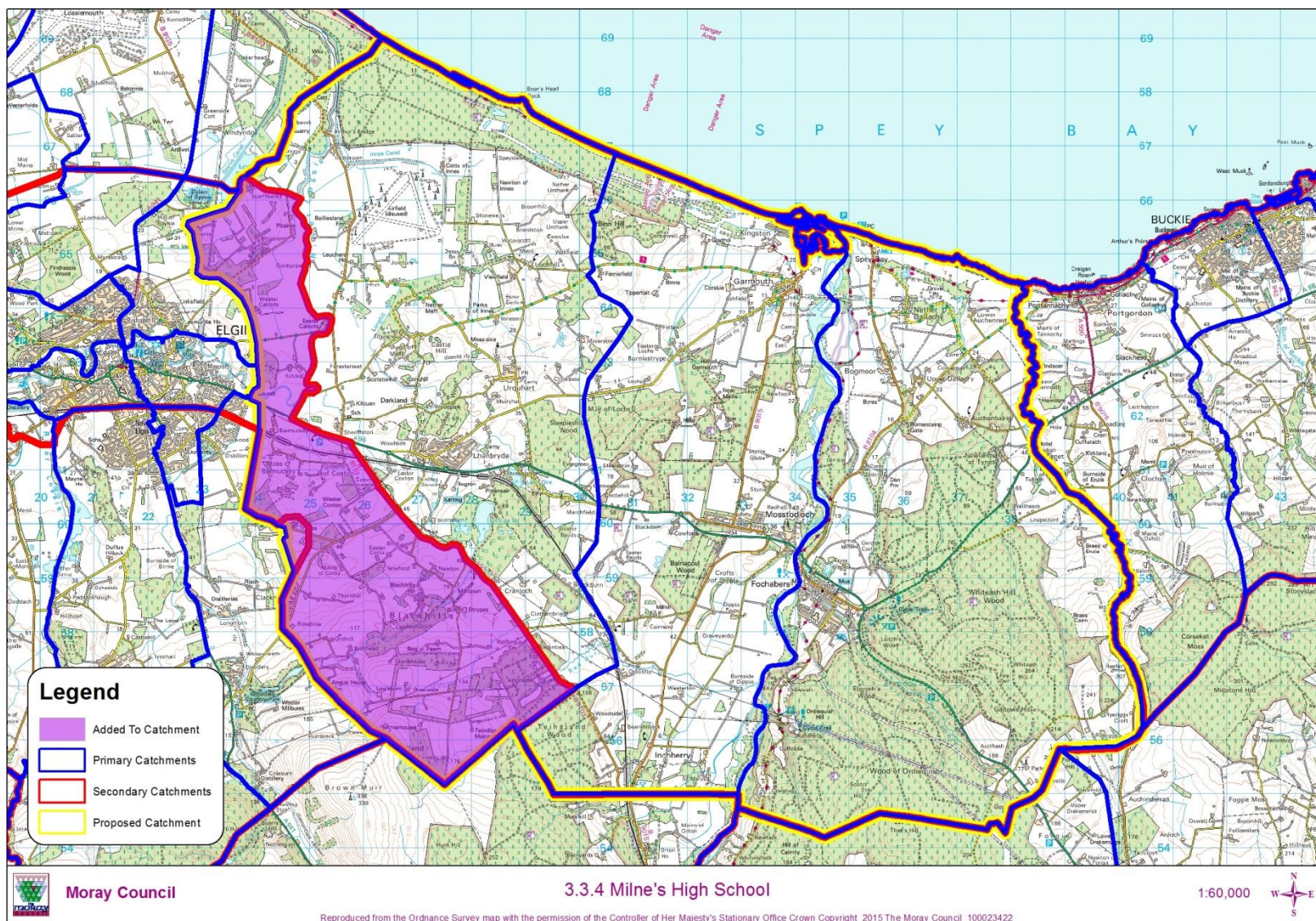
- improve continuity and progression for learners;
- improve curricular coherence for pupils;
- ensure all pupils can enjoy the benefits of working collaboratively with children from other ASG schools;
- ensure that all secondary schools will have clear and distinct associations with their local communities.

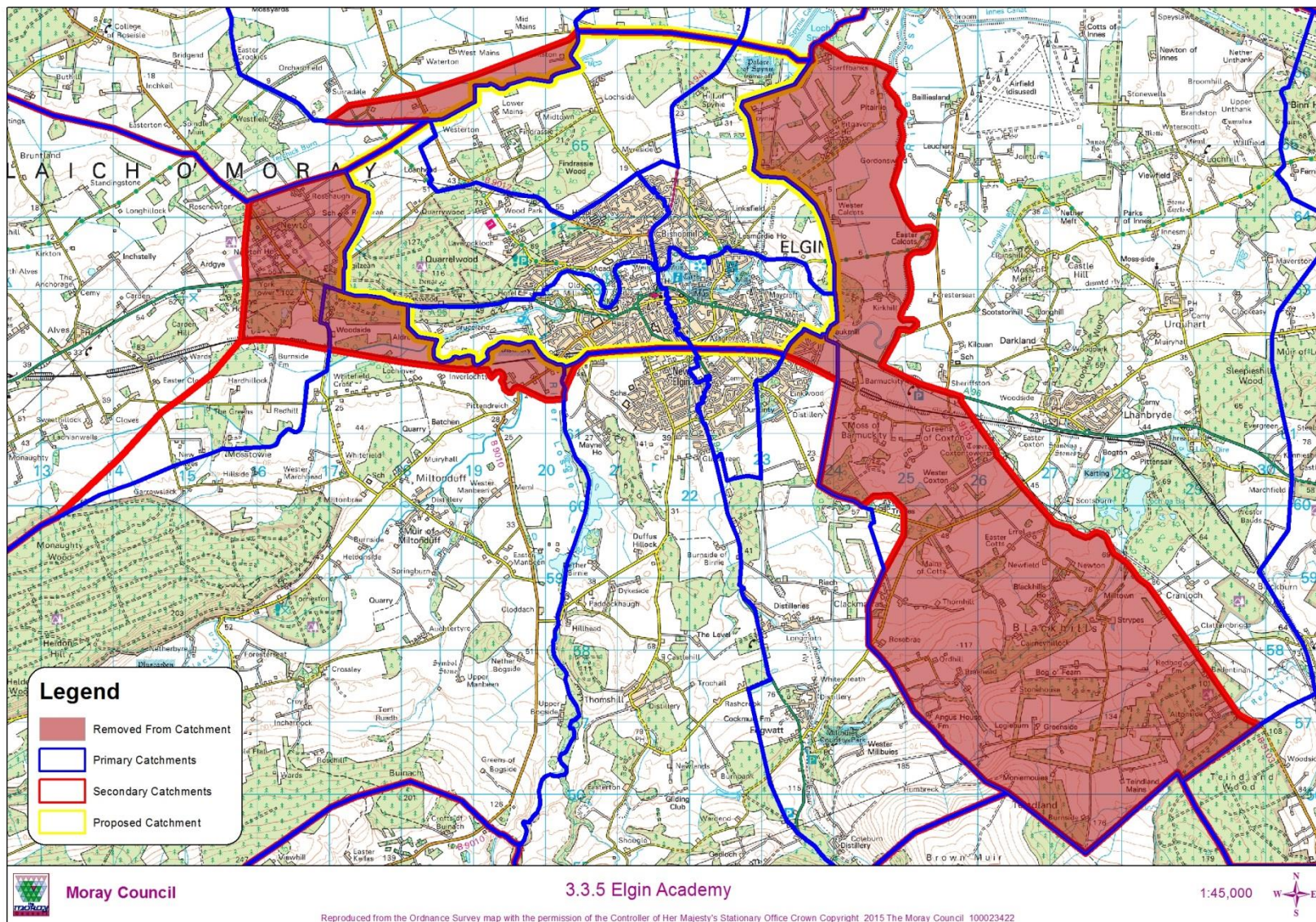
Specific educational benefits for individual ASGs are given in the Proposal Paper.

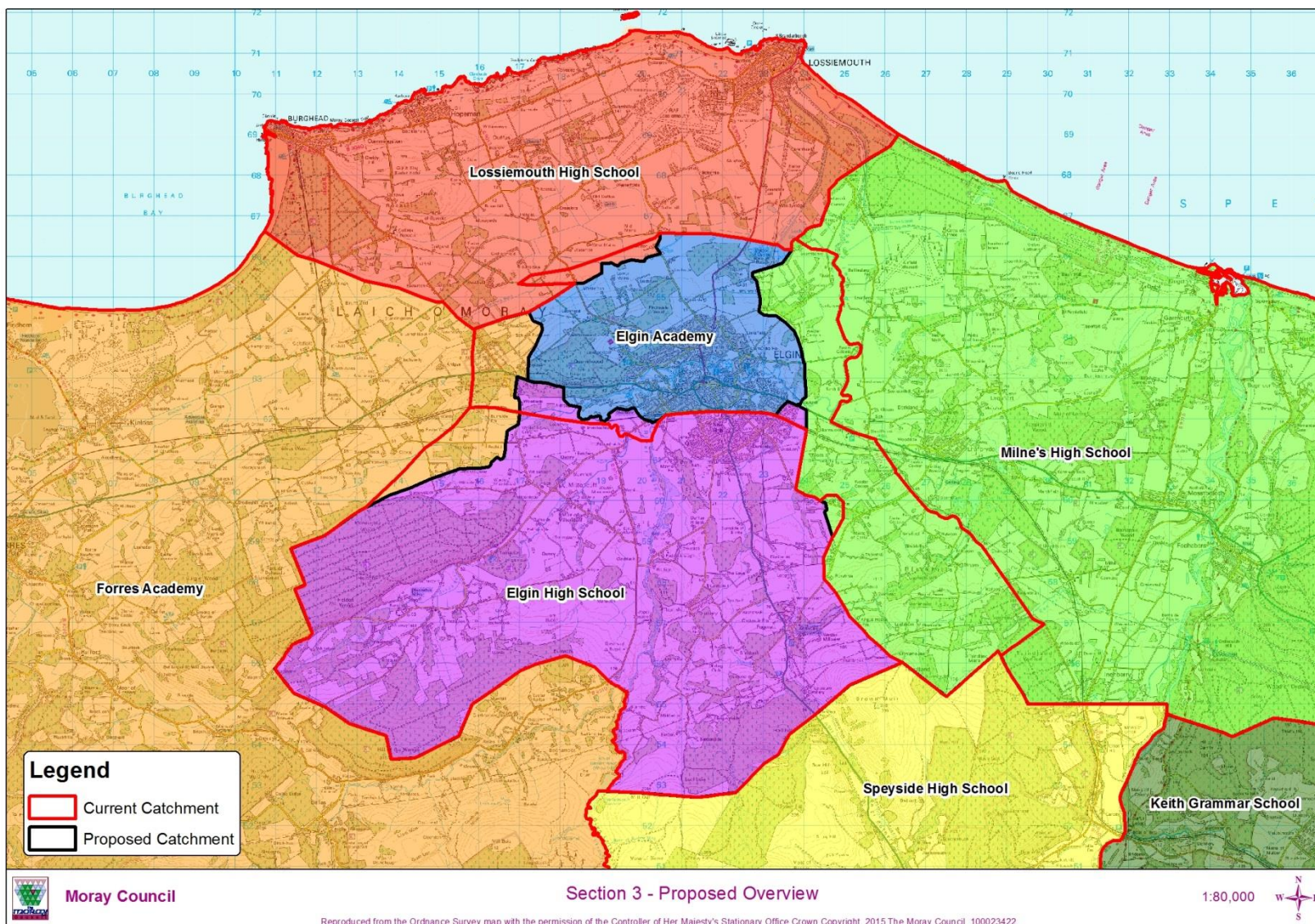


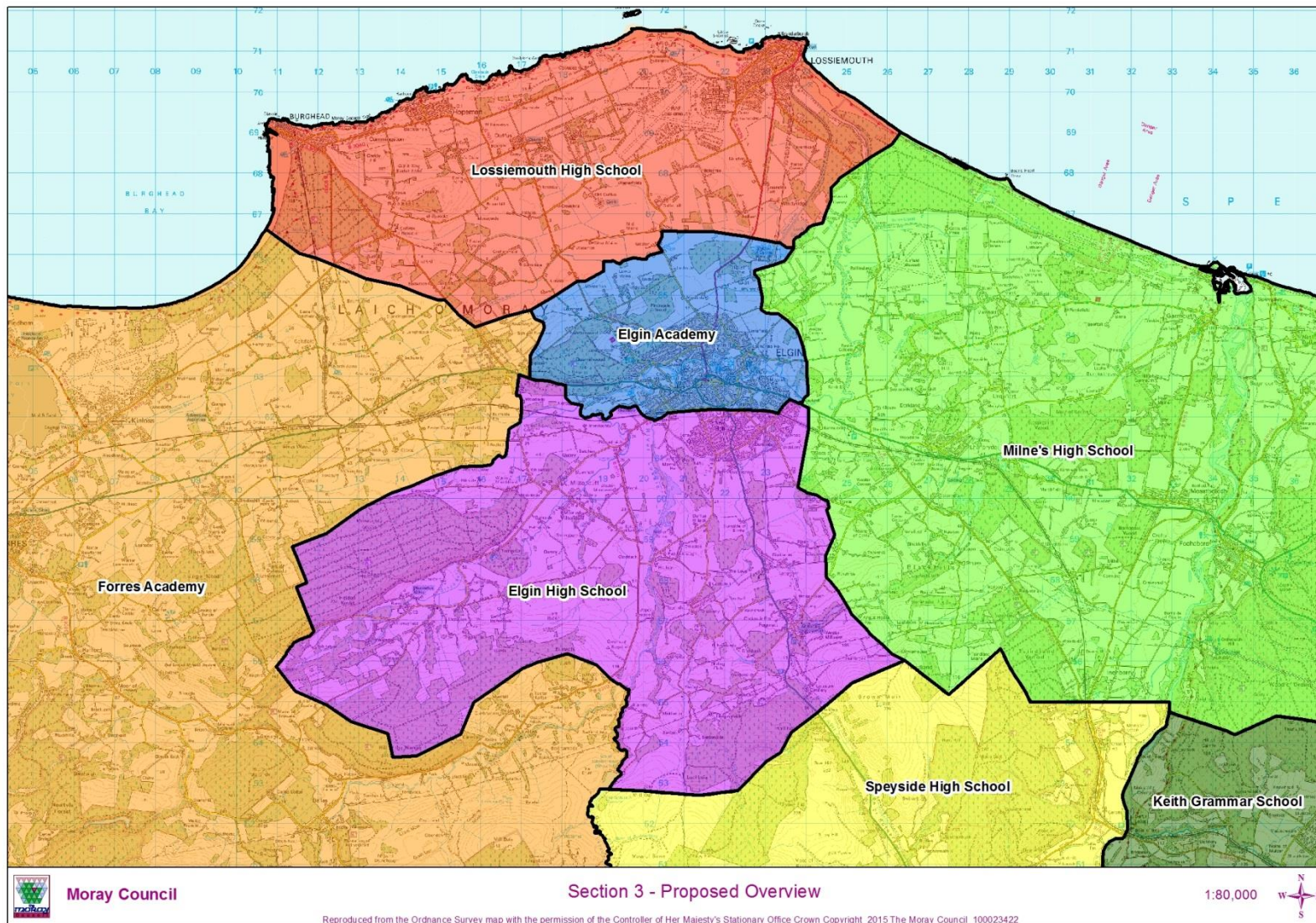


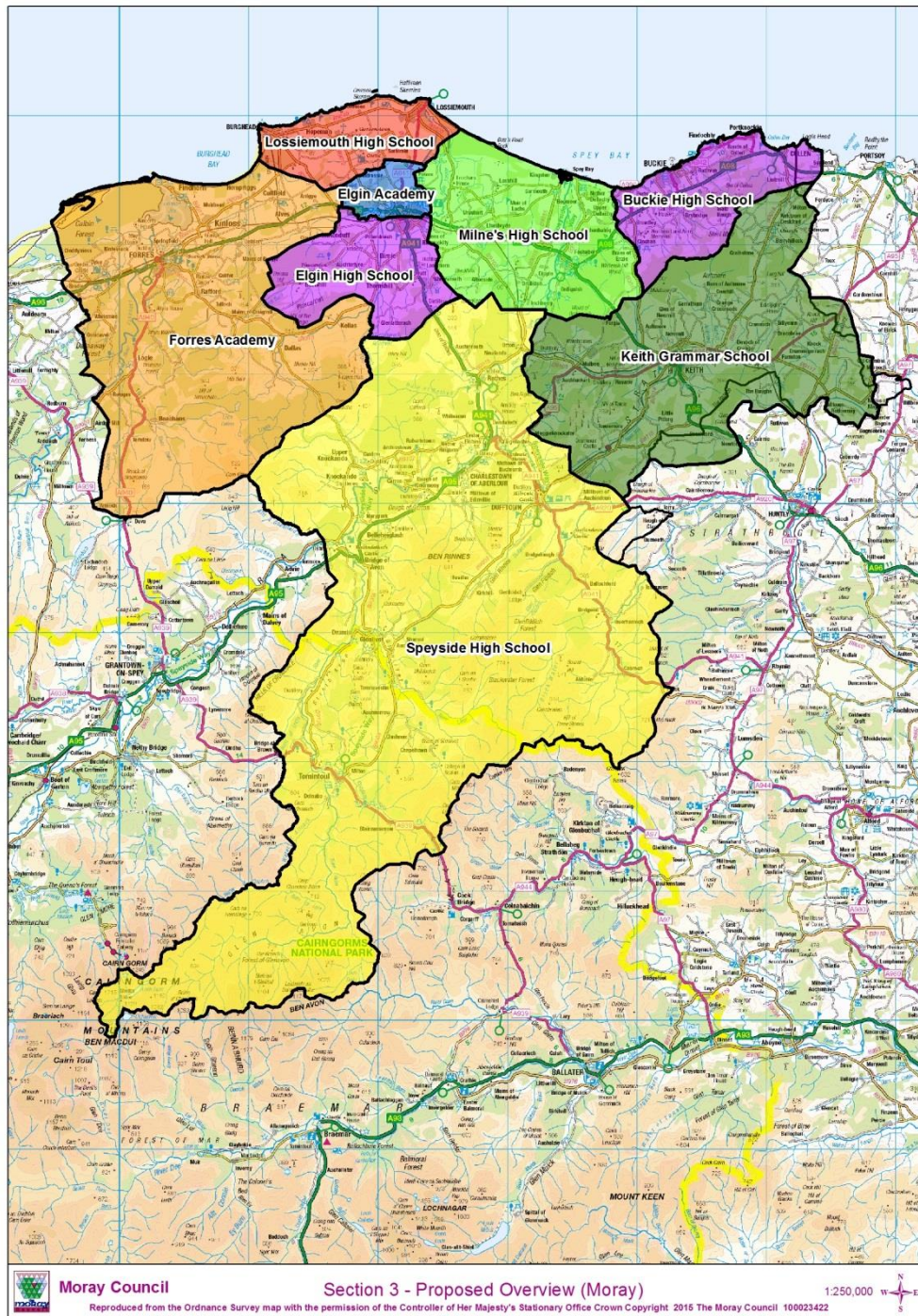




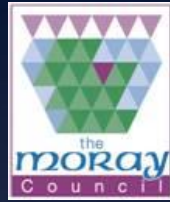






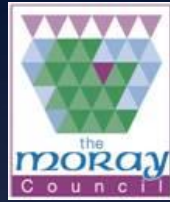


TRANSITION ARRANGEMENTS



- Children in Primary 7 in any of the affected primary schools will transfer to the existing zoned secondary school in August 2016 as per the current catchment areas.
- Children enrolling in any of the affected secondary schools before 7th October 2016 will enrol in the current zoned secondary school in whose catchment area they reside as per the existing catchment.
- From 24th October 2016 all enrolments to secondary schools will be based on the proposed revised catchment areas.

TRANSPORT ARRANGEMENTS



- The removal of the dual zoning and the split zoning will mean that, in the longer term, The Moray Council will only provide transport, for eligible pupils, to one zoned secondary school for each ASG.
- Transport will continue to be provided for pupils to attend the secondary schools they are attending on 7th October 2016 for the remainder of the pupils' time at that school.

How to Respond

Responses to the consultation should be made by writing to:

Secondary School Rezoning Consultation and / or
Admissions Policy Consultation

The Moray Council
Community Support Unit
High Street
Elgin
IV30 1BX

- or by e-mail to: futureschools@moray.gov.uk
- or by completing the consultation response form
- or by completing the on-line consultation form
(link at www.moray.gov.uk/rezoning)

All responses must be submitted by **5.00pm on Thursday 24th March 2016** for them to be taken into account as part of the consultation.

