

**EDUCATION AND SOCIAL CARE**

## **Establishing a new primary school in south-east Elgin**

### **CONSULTATION REPORT**

**18 March 2016**

## Contents

1. INTRODUCTION .....	1
Background .....	1
Proposals .....	1
Purpose of Consultation .....	1
Timelines .....	2
Consultees .....	2
Reviewing the proposal .....	2
2. ANALYSIS OF RESPONSES TO CONSULTATION .....	3
Summary .....	3
Response Analysis .....	4
3. SUMMARY OF MAIN ORAL POINTS RAISED and EDUCATION AUTHORITY RESPONSE .....	5
Issues .....	5
4. SUMMARY OF WRITTEN POINTS RAISED and EDUCATION AUTHORITY RESPONSE .....	9
Issues .....	9
5. ALLEGED INACCURACY .....	13
6. REPORT BY EDUCATION SCOTLAND .....	14
7. CONCLUSIONS AND RECOMMENDATIONS .....	15
Reviewing the proposal .....	15
Summary .....	15
Conclusions .....	16
Recommendations .....	16
Appendix A: PROPOSAL PAPER .....	17
Appendix B: EDUCATION SCOTLAND REPORT .....	29
Appendix C: SUMMARY OF PUBLIC MEETINGS AND WRITTEN RESPONSES .....	33

---

## 1. INTRODUCTION

---

### Background

At its meeting on 11<sup>th</sup> November 2015, The Moray Council agreed to establish revised catchment areas for Elgin Primary Schools, to be effective from 5<sup>th</sup> January 2016 for existing schools, and instructed the Corporate Director (Education and Social Care) to bring forward details of the next steps in establishing a new school for south-east Elgin, including temporary arrangements.

On 9<sup>th</sup> December 2015 the Children and Young People's Services Committee agreed the proposals, laid out below, and delegated authority to the Corporate Director (Education and Social Care) to progress to statutory consultation on the proposals and to publish this Consultation Report.

### Proposals

1. It was proposed to establish a new primary school, with nursery provision, to serve the agreed catchment area for the delineated geographical zone in south-east Elgin with the school located in the area identified on a map labelled **Appendix 2** (in Appendix A: Proposal Paper).
2. It was further proposed that the new school be established initially at a temporary site at East End Primary School Annexe until the new school building is complete. (The temporary accommodation will initially accommodate P1 children and will accommodate P1-3 in future years.)
3. It is intended that the implementation date for these proposals will be 15<sup>th</sup> August 2016, for the temporary accommodation, except that the nursery will only commence once the new school building opens.
4. It was proposed that the new school will relocate to its permanent site on the completion of the new school building. The target date for this is August 2018.

### Purpose of Consultation

Establishing a new school and relocating a school requires a formal consultation to be carried out in accordance with the Schools (Consultation) (Scotland) Act 2010. This report documents the formal consultation undertaken on these proposals between 14<sup>th</sup> December 2015 and 4<sup>th</sup> February 2016.

## **Timelines**

- The Consultation was over 30 school days from 14<sup>th</sup> December 2015 to 4<sup>th</sup> February 2016 (30 school days).
- Education Scotland reported back on the educational aspects of the proposal on 4<sup>th</sup> March 2016.
- This Consultation Report was published on 18<sup>th</sup> March 2016.

## **Consultees**

During the consultation period, views were sought from a range of stakeholders and interested parties including:

- Parents
- Pupils
- Teaching and support staff
- Parent Councils
- Elgin Community Council
- Local Negotiating Committee for Teachers (LNCT)
- Trade Unions
- Other interested parties.

## **Reviewing the proposal**

The written and oral responses were analysed by one of the Council's Research and Information Officers and Senior Education Adviser (Schools Consultations). The main issues arising were considered by the Corporate Director (Education and Social Care), Head of Life Long Learning, Culture and Sport and Senior Education Adviser (Schools Consultations) and the Corporate Director Education and Social Care) has provided the Education Authority response, in terms of the powers delegated to him. This analysis and response inform the conclusions and recommendations in this report.

## 2. ANALYSIS OF RESPONSES TO CONSULTATION

### Summary

As part of the consultation the Council conducted a survey (on-line and paper) to ascertain people's views.

The survey asked:

1. If respondents agreed with the proposal to establish a new primary school, with nursery provision, in the specified location, to serve the agreed catchment area for the delineated geographical zone in south-east Elgin.
2. If respondents agreed with the proposal to establish the school initially at a temporary site at East End Primary School Annexe until the new school building is complete.

A total of 382 people took part in the survey, of those, 365 answered both questions. The analysis is based on these completed responses (365). A number of respondents (30) completed the survey in one or more designations. 48 people chose not to leave their designation and have been referred to as "No Designation" in the tables overleaf.

1. An almost exact number of responses were completed by parents (143) and children (144). Responses from these two groups accounted for 80% of all respondents.
2. Overall 332 people (91%) agreed with the building of a new school and nearly 2/3rds (231) agreed with temporary accommodation being used prior to the building of the new school.
3. 100% (14) of staff members agreed with the building of a new school along with 94% of children and 92% of parents.
4. 48 (13%) of respondents decided not to indicate their designation. This group were the least supportive of the proposals with 73% supporting the new school proposal and only 35% agreeing with the proposal to use temporary accommodation until the new school has been built.
5. Overall more than 6 in 10 survey respondents agreed with both proposals.
6. 167 (45%) respondents left comments or suggestions.

On the following page are tables providing a breakdown of the responses from the groups that took part in the survey.

## Response Analysis

Question 1: Agreement / Disagreement with the proposal to establish a new primary school, with nursery provision, in the specified location, to serve the agreed catchment area for the delineated geographical zone in south-east Elgin.

Type of Respondent	Number of survey Responses	Number Agree	Number Disagree	% Agree	% Disagree
Parent	143	132	11	92.3%	7.7%
Child	144	136	8	94.4%	5.6%
Staff Member	14	14	0	100.0%	0.0%
Other	16	15	1	93.8%	6.3%
No Designation	48	35	13	72.9%	27.1%
<b>Total</b>	<b>365</b>	<b>332</b>	<b>33</b>	<b>91.0%</b>	<b>9.0%</b>

Question 2: Agreement / Disagreement with the proposal to establish the school initially at a temporary site at East End Primary School Annexe until the new school building is complete.

Type of Respondent	Number of survey Responses	Number Agree	Number Disagree	% Agree	% Disagree
Parent	143	90	53	62.9%	37.1%
Child	144	108	36	75.0%	25.0%
Staff Member	14	6	8	42.9%	57.1%
Other	16	10	6	62.5%	37.5%
No Designation	48	17	31	35.4%	64.6%
<b>Total</b>	<b>365</b>	<b>231</b>	<b>134</b>	<b>63.3%</b>	<b>36.7%</b>

---

### 3. SUMMARY OF MAIN ORAL POINTS RAISED and EDUCATION AUTHORITY RESPONSE

---

#### Issues

1. **Allow children who are now 'out of zone' but have siblings already at a school to enrol at that school.**

While this cannot be guaranteed, these proposals are designed to increase the chances of preventing siblings from having to be enrolled at different schools.

2. **There is a need to take action to reduce the overcrowding at New Elgin Primary. There are concerns over the negative impact on learning and teaching, curriculum delivery and staff morale at New Elgin as a result of overcrowding.**

These proposals are designed to help address the problems of overcrowding at New Elgin Primary by zoning pupils to the new school who would previously have been zoned to New Elgin Primary School.

3. **Concerns over how to attract teachers for the new school.**

The Council has an obligation to provide the requisite number of teachers for the number of children in Moray schools. The Council is confident that a new school will be fully staffed and have already received notes of interest from potential head teachers and teachers interested in teaching in a new school, including any temporary school.

4. **There is a need to ensure effective induction arrangements for new P1 pupils who will attend the 'temporary school'.**

It is acknowledged that this will be a priority and it is intended to move swiftly to appoint teaching staff in order to ensure there is an effective induction programme in place for June 2016.

5. **There are various concerns over bussing the pupils to the temporary school.**

The Council will offer to transport the pupils to the temporary school but using a bus is only one option open to parents. It is being offered in order to reduce potential increases in traffic around East End Primary and also for the convenience of parents who may have children at another school. It is not standard practice for the Council to provide bus escorts. However, given the age of the children involved, if a bus is provided, then it will have a number of adult escorts, in line with Council guidelines, who will ensure the children arrive safely at school.

**6. Provide transport to all East End pupils from the Pinefield, Barlink Road, Waulkmill Road and Reynolds Crescent areas.**

The cost of this is estimated at £360 per day as two buses would be required. The total annual cost be in the region of £70,000 and would have to be met from existing budgets. In view of the cost implications, it is not recommended to pursue this presently.

**7. Various concerns have been expressed about traffic congestion around East End Primary. There were suggestions to make the streets around East End Primary a 'one-way' route.**

This, and point 8 below, were passed by Education Officers to Moray Council's Traffic Engineers. It has subsequently been reported back that assessment of traffic data does not show an existing road safety problem in the roads mentioned and while implementing a one-way system would reduce congestion it would likely result in a consequent increase in vehicle speeds. Evidence shows that faster vehicle speeds result in greater severity for any casualties so while a one-way system may ease congestion it would increase the risk of a young pedestrian or cyclist being seriously injured. Reducing congestion may also make the route more attractive for traffic, increasing the number of vehicles and pressure on parking. Any moves to reduce congestion without reducing the number of vehicles may in fact increase road safety risks for cyclists and pedestrians.

**8. Various concerns have been expressed about car parking around East End Primary and suggestions have been made that the Council Annexe car park could be made available for East End parents to drop off children and Council staff could be given parking permits for Lossie Green car park.**

The school car park is not a public car park. Suitable signs need to be made and installed saying words to the effect "This is a private car park for school use only". Visitors can be asked to give their registration number to school reception when they sign in. School staff could issue letters to parked cars not associated with the school (i.e. not staff and not registered at reception during the day).

Traffic engineers have also suggested considering closing the school gates when not needed to be open or placing cones to block off areas preventing vehicles moving. It is not believed that either the Annexe car park or Lossie Green car park suggestions represent realistic and workable options.

**9. Loss of Support for Learning room at East End Primary. Loss of classrooms at East End Primary.**

The room currently used as a support for learning room will transfer to the temporary school. As an inclusive authority there is a presumption of mainstream education as per the Education (Additional Support for Learning) (Scotland) Act 2004. As such, Moray schools are not entitled to dedicated support for learning accommodation. East End Primary is not the ASG primary school with enhanced provision for pupils



with additional support needs. Nevertheless, it is acknowledged that some re-examination of utilisation of available accommodation in the main school building will be required. None of the classroom accommodation currently in use at East End Primary will be 'lost' to the temporary school.

**10. Concerns over lunch and playground arrangements with two schools sharing facilities.**

The total number of pupils is likely to remain below the total accommodated at East End Primary in the past. Nevertheless, it is recognised that there is an increase in the numbers of children taking school lunches. Operational arrangements will have to be agreed between the head teachers of the two schools.

**11. All pupils from the new zone should be zoned to East End Primary.**

This would run contrary to the arguments over increased traffic and overcrowding at East End Primary and this will remain an option open to parents via placing requests. The Council respects parents' right to choose a school and has put forward the proposal of a temporary school in order to increase the number of options available. The option, of zoning all the children in the south-east catchment area to East End Primary would require a new proposal and consultation as it does not form part of the current proposals.

**12. All pupils, resident in new zone, attending East End Primary should be placed in one class.**

There are educational arguments for and against this suggestion and ultimately responsibility for class structure at East End Primary is the responsibility of the head teacher of that school.

**13. Extend New Elgin Primary.**

This was discounted as impractical at the time of the rezoning consultation.

**14. Concerns over arrangements if the new building is not opened in August 2018 and a need for contingency plans.**

It is likely that temporary modular accommodation will be required if the new school does not open in August 2018. This could be sited on the East End Primary campus. Progress with the new build will be closely monitored and if there is a need for contingency plans they will be activated at an early date.

**15. Concerns over starting and finishing times at the temporary school including staggered times with East End Primary.**

Start and finish times will be agreed with the parents of the children attending the temporary school once Officers have had an opportunity to meet with the parents. Officers have not stated that starting and finishing times would be staggered; this was only a suggestion as a possible option, if it suited parents.

**16. There is a need for close links between the temporary school and East End Primary. Suggestions regarding joint activities between the two schools e.g. inter-school competitions and joint ventures.**

It is agreed that such activities have the potential to bring educational benefits. Practical operational details would have to be agreed between the head teachers if the proposals go ahead.

**17. There should be no compulsory transfer of pupils.**

This is not policy and there are no plans to introduce compulsory transfers.

**18. Can work be done to extend lunch and PE facilities at New Elgin?**

This is not currently on the Capital Plan. Any future developments would need Elected Members' agreement.

**19. Can subsidised public transport (e.g. bus pass) be used to transport children to the East End campus (both East End and temporary school pupils)?**

The town bus from the Pinefield area would go via Elgin High School, Dr Gray's hospital and would drop pupils at the bus station. This would involve a long bus journey and pupils would still have to get from the bus station to East End Primary. The No 10 service is not frequent enough and the bus is often full when it reaches Elgin.

The No 35 turns off on to Maisondieu Road, therefore children would have to cross Maisondieu Road.

It is believed that, in practice, none of these offer viable options.

---

## **4. SUMMARY OF WRITTEN POINTS RAISED and EDUCATION AUTHORITY RESPONSE**

---

The main issues raised in written correspondence are listed below along with the Education Authority response from the Corporate Director (Education and Social Care). A number of the issues arising were similar to those intimated at the various meetings and are summarised below.

### **Issues**

- 1. Allow children who are now 'out of zone' but have siblings already at a school to enrol at that school. Concerns over how parents can drop then collect children from two different schools.**
- 2. There is a need to take action to reduce the overcrowding at New Elgin Primary.**
- 3. Concerns over how to attract teachers for the new school.**
- 4. There is a need to ensure effective induction arrangements for new P1 pupils who will attend the 'temporary school'.**
- 5. There are various concerns over bussing the pupils to the temporary school.**
- 6. Provide transport to all East End pupils from the Barlink, Pinefield and Reynolds Crescent areas.**
- 7. Various concerns have been expressed about traffic congestion and parking around East End Primary.**
- 8. Concerns over starting and finishing times at the temporary school including staggered times with East End Primary.**
- 9. Concerns over arrangements if the new building is not opened in August 2018.**
- 10. Suggestions regarding joint activities between the two schools.**

Responses to these points are given in Section 3.

---

**11. Concerns over potential detrimental impacts on East End Primary including loss of GP space, loss of ASN accommodation, and the need to involve the Head Teacher from East End Primary in all decisions relating to refurbishment.**

Officers are working closely with the head teacher to provide solutions to any potential negative impacts on East End Primary. This will be an ongoing process as the new school becomes operational. Suggested short term accommodation solutions include relocating the depute head teacher to share accommodation with the head teacher and utilising a room currently employed as a meeting room as the support for learning base. There should be no loss of GP space for East End Primary.

**12. There is a need for Council Officers to engage with parents from the new south-east zone.**

Now that enrolments have taken place and names and addresses of children are known, Officers have met with parents/carers. Further, regular meetings will take place.

**13. Question as to whether there will be any pre/after school provision on site.**

This matter has not been discussed to date but the practicalities of this, and potential interest from parents, will be considered once the new school is established.

**14. Amend Elgin primary school catchment areas/do not implement new zones/alternative suggestions for catchment areas.**

This has only very recently been the subject of an extensive consultation and the Council has taken a decision to amend catchment areas for Elgin. All alternative suggestions were fully considered during the 2015 consultation on rezoning Elgin Primary Schools. Under delegated authority, The Corporate Director (Education and Social Care) took the view, following consultation, that the proposals represented the most reasonable and viable options open to the Council. Any proposal to further amend catchment areas would require a new set of proposals and consultation which could not be justified in terms of educational benefits. In the meantime the catchment areas, agreed in November 2015, must remain.

**15. Do not implement new catchment areas until the new school is built.**

This was the original plan for the south-east Elgin zone. The current proposals came about due to a demand to make interim arrangements.

**16. There is a need for a separate budget for the new school.**

This is agreed and is being progressed.

- 17. The roll forecast for Elgin's primary school population up to 2021 is too high. The forecasts and assertions justifying the new school at south-east Elgin are flawed. Roll forecasting should be reconsidered.**

Moray Council uses roll forecasting methodology similar to many other Scottish local authorities. Experience of many authorities, including Moray, over the last ten years has been that this has underestimated the numbers of children, particularly in relation to areas of new house building. This can be explained in part due to the build out and occupancy rates being higher than originally forecast. However, it must be borne in mind that these are indeed forecasts and as such are revised every year, with the result that a forecast two years in advance will be more accurate than a forecast seven years in advance. Roll forecasting takes a number of factors into account above house building, particularly placing request trends which have a major impact on all primary school rolls in Elgin.

- 18. The consultation papers made no mention of the school to be built at Findrassie.**

This consultation is about a new school for south-east Elgin. Officers are of the view that a new school is not yet required for Findrassie, but when a need is identified a full consultation on establishing a new school, and agreeing a catchment area will be carried out.

- 19. Provide a crossing patroller on Ashgrove Road close to the junction with the A96 (near Burger King).**

This will be considered when school travel plans are revisited.

- 20. Bring the Heritage Centre rooms back into use at East End Primary and extend the school's capacity.**

This is planned for and will happen as the roll of East End Primary expands.

- 21. Transfer future pupils from Kingsmills and South Lesmurdie to Seafield in order to reduce East End's catchment area.**

Potential pupil numbers indicate that this would have negligible impact as there are, and are likely to be, relatively few primary school age children resident in these areas. This would also require new proposals and consultation as this does not form part of the current proposals.

- 22. The Council should postpone its plan to implement a new school at Linkwood.**

Officers remain firmly of the view that a new school to serve the south-east Elgin catchment area is urgently required.

**23. Examine alternative proposals for accommodating school roll increases throughout Elgin, but particularly at East End and Greenwards.**

East End and Greenwards can accommodate pupils through placing requests but, as stated above, it is believed there is a strong case for a new school to serve south-east Elgin.

**24. Allow children who have attended New Elgin nursery to enrol at New Elgin Primary.**

Attendance at a school nursery has never been a guarantee of being admitted to that school if the child is resident out of zone.

**25. Move New Elgin P7s to Greenwards**

The Council has previously rejected this suggestion. If it were to be pursued it would require a further consultation and could not happen until at least August 2017.

**26. Create a temporary school within empty units owned by Springfield Properties at Glassgreen. Utilise Grant Lodge as a school.**

These would not be suitable for use as a school even if they were available to the Council.

**27. Construct a temporary modular building on the site of the proposed school.**

This would not be cost effective and the site currently has no suitable access. Lengthy planning and design processes would also be required.

**28. Stop admitting children from different areas to schools out of zone.**

The Council already reserves spaces in Elgin schools for in-zone pupils; however the Council must comply with the law regarding placing requests when there are places available in schools.

**29. Base temporary school at New Elgin Primary.**

There is no available space to do this.

**30. Utilise three vacant buildings at West End Primary.**

There are no vacant buildings at West End Primary.

---

## **5. ALLEGED INACCURACY**

---

One respondent alleged that the Council's roll forecasts are inaccurate. School roll forecasting is addressed on page 11 of this report. Officers met with representatives of the respondent on 5 January 2016 to clarify how roll forecasts are computed and confirmed how the Council uses other statistical data around pupil numbers which is available to the Council. Officers are satisfied with the accuracy of the data used in the proposals and acknowledge that school rolls and forecasts will change year on year due to a range of factors which are subject to external influences.

---

## **6. REPORT BY EDUCATION SCOTLAND**

---

The main points from the Education Scotland report were:

- The proposal has a number of potential educational benefits for learners, leading to improvements in the quality of learning environments, particularly for children who are zoned to attend the new school and those attending New Elgin Primary School.
- A new school building has potential educational benefits for learners, including supporting the full delivery of Curriculum for Excellence in purpose-built accommodation which is accessible and inclusive to all learners. The proposal also has potential benefits to the community.
- The aspect of the proposal to establish the new school initially at a temporary site at East End Primary School Annexe has potential educational benefits for children attending the new school.
- The proposal will also assist the Council to achieve best value by addressing capacity issues across its school estate in the Elgin area.
- In finalising its proposal, the Council will need to show how it has taken account of any issues raised by stakeholders during the consultation or in discussion with HM Inspectors. Specifically, Education Scotland noted that the Council will need to: explain clearly how children attending the temporary new school will experience a broad range of learning experiences with older and younger children within a 'shared campus' environment; respond to stakeholders' concerns regarding traffic management around the school and travel plans; and share its plans to support children's transitions into P1 at the temporary accommodation.



---

## 7. CONCLUSIONS AND RECOMMENDATIONS

---

### Reviewing the proposal

The written and oral responses were analysed by one of the Council's Research and Information Officers and Senior Education Adviser (Schools Consultations). Officers of the Education Authority have listened carefully to the points made at the public meetings and have considered equally carefully the written representations and the report from Education Scotland. The main issues arising have been considered by the Corporate Director (Education and Social Care), Head of Life Long Learning, Culture and Sport and Senior Education Adviser (Schools Consultations) and the Corporate Director (Education and Social Care) has provided an Education Authority response to the issues in terms of powers delegated to him.

### Summary

1. There is a very strong case to establish a new primary school, with nursery provision, to serve the agreed catchment area for the delineated geographical zone in south-east Elgin with the school located in the area identified. The proposal has a number of potential educational benefits for current and future learners. The proposal will also assist the Council in addressing capacity issues across its school estate in Elgin.
2. The aspect of the proposal to establish the new school initially at a temporary site at East End Primary School Annexe has potential educational benefits for children attending the new school. By being part of the 'new school' from the outset, children should experience less disruption to their learning when the new school building opens. Parents, pupils and staff will have the opportunity to be fully involved in the planning and development of the new school.
3. In response to concerns raised, in writing and at meetings, and highlighted by Education Scotland, Officers have begun a series of meetings with the management team from East End Primary School to address operational issues around shared facilities and how the children attending the temporary school building will experience a broad range of learning experiences with older and younger children within the 'shared campus' environment.
4. Education Scotland reported that the Council should respond to stakeholders' concerns regarding traffic management around East End Primary School. An initial response is noted above and the traffic situation will be kept under review. Each of the primary schools' travel plans will need to be revisited, to ensure safe routes to school are identified.

5. The Council is aware of the tight timescales around an August school opening for a new school and a number of actions are already underway to ensure everything is in place for then. Initial meetings have been held with parents and these will continue between April and June 2016. Building refurbishment work, for the P1 classrooms, is scheduled to be completed by the end of May 2016, staff appointments should be made in early May 2016 with transition programmes, for the children enrolling into P1, starting in early June 2016.

## **Conclusions**

The Council now has three broad options for the proposed changes:

- a) abandon the proposal and maintain the status quo; or
- b) adopt the proposals in their entirety; or
- c) amend each specific proposal in some way and undertake a further consultation exercise on each new proposal.

## **Recommendations**

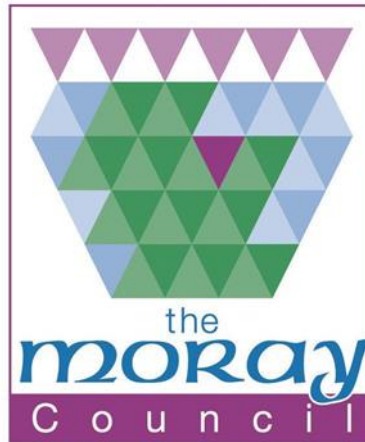
Having considered all of the written and oral submissions, along with the report from Education Scotland, officers recommend:

- (a) establishing a new primary school, with nursery provision, to serve the agreed catchment area for the delineated geographical zone in south-east Elgin with the school located in the area identified;
- (b) establishing the new school initially at a temporary site at East End Primary School Annexe until the new school building is complete;
- (c) the implementation date for these proposals is 15th August 2016, for the temporary accommodation, except that the nursery will only commence once the new school building opens;
- (d) relocating the new school to its permanent site on the completion of the new school building. The target date for this is August 2018.

---

## Appendix A: PROPOSAL PAPER

---



### THE MORAY COUNCIL EDUCATION AND SOCIAL CARE

## ESTABLISHING A NEW PRIMARY SCHOOL FOR SOUTH-EAST ELGIN

### Proposal Paper

**To establish a new primary school, with nursery, for south-east Elgin, initially in temporary accommodation.**

#### **Statutory Consultation Period:**

**Monday 14<sup>th</sup> December 2015 – Thursday 4<sup>th</sup> February 2016 inclusive (30 school days)**

All submissions expressing views on the proposals detailed in this document must be submitted **by 5.00pm on 4<sup>th</sup> February 2016** for them to be taken into account as part of the consultation.

It is intended to respond to issues raised during the consultation within a consultation report that will be published before the meeting of the Children and Young People's Services Committee on **27<sup>th</sup> April 2016**.

This document has been issued by the Moray Council for consultation in terms of the Schools (Consultation) (Scotland) Act 2010.

## 1. THE PROPOSALS

- 1.1 It is proposed to establish a new primary school, with nursery provision, to serve the agreed catchment area for the delineated geographical zone in south-east Elgin with the school located in the area identified within **Appendix 2**.
- 1.2 It is further proposed that the new school be established initially at a temporary site at East End Primary School Annexe until the new school building is complete. (The temporary accommodation will initially accommodate P1 children and will accommodate P1-3 in future years.)
- 1.3 It is intended that the implementation date for these proposals will be 15<sup>th</sup> August 2016, for the temporary accommodation, except that the nursery will only commence once the new school building opens.
- 1.4 It is proposed that the new school will relocate to its permanent site on the completion of the new school building. The target date for this is August 2018.

## 2. BACKGROUND

- 2.1 The Moray Council, at its meeting on 11 November 2015, agreed to establish revised catchment areas for Elgin Primary Schools, to be effective from 5<sup>th</sup> January 2016 for existing schools, and agreed to bring forward details of the next steps in establishing a new school for south-east Elgin, including any temporary arrangements.
- 2.2 There were thirty six responses to the consultation proposal to establish a catchment area for a new school to serve an area of south-east Elgin which is shown as a delineated area on the map attached in **Appendix 1**. Of those responses thirty two agreed with the proposal.
- 2.3 A location plan showing the area within which the new school will be built is attached as **Appendix 2**.
- 2.4 The new school will not be ready for occupation until August 2018 at the earliest. The original proposal was for pupils resident in the new catchment area to enrol for the new school from January 2016 but to continue to attend their current zoned school until the new school opened. This would have seen pupils enrolling for the new school attending New Elgin or East End Primary School (depending on place of residence) until the new school opened.
- 2.5 During the consultation on the school rezoning, there were concerns expressed by pupils, Parent Councils, staff and at public meetings that as a new school would not be available until at least 2018 there would be continued pressure on existing school accommodation. There were also queries regarding contingency plans if a new school is delayed beyond the proposed timescale.

- 2.6 The roll forecast for August 2016 for New Elgin Primary School is 617. This would take it almost 10% above its physical capacity. The current school roll is 552. Even with this number of pupils, there is a lack of dining room and PE accommodation, which is causing particular problems.
- 2.7 During the re-zoning consultation, the Council received suggestions for erecting temporary accommodation or an extension to New Elgin Primary. Officers previously considered this option when drawing up the original rezoning proposals and rejected it on the grounds that it is not considered a realistic option for a number of reasons including loss of recreational space for pupils, increased pressure on dining room accommodation, increased traffic problems around the school and significant capital outlay for accommodation which in the longer term would be unlikely to be required.
- 2.8 In light of the above, Officers believe that an immediate solution to the school capacity pressures, in the period prior to the new school being built, is required. Solutions could involve creating additional accommodation within the existing school, creating additional accommodation within other schools or early establishment of the new south-east Elgin primary school. For this option whilst the new school could not occupy its permanent site at this time it is feasible to open the new school, initially for P1 only and ultimately catering for P1-3, based in temporary accommodation. A new head teacher and necessary staff would be employed. The 'school' would relocate to its permanent site once the new school building was ready for occupation.

### **3. EDUCATIONAL BENEFITS STATEMENT**

#### **3.1 Overall educational benefits**

- 3.1.1 Pupils who are resident within the delineated zone for the new school will be able to attend their zoned school and be taught with peers from their community.
- 3.1.2 The establishment of a new primary school will have a positive impact on the balance between the numbers of pupils in the Elgin primary school communities. It will alleviate projected pupil roll pressures across Elgin from potential housing developments identified in the adopted Local Development Plan.
- 3.1.3 Establishing the new school from August 2016, in temporary accommodation, will enable the children from the new catchment area for south-east Elgin to enrol in Primary 1 at the new school. They would therefore be part of the school from day one and should enjoy continuity in their learning through primary school, with their peer group. The following year a new P1 would enrol and children will begin to move up the school.
- 3.1.4 Children will be able to make seamless progress through primary school and not experience any discontinuity in their learning which could happen if those from the new catchment area were to move to a new school during their time at primary school.

- 3.1.5 Appointing a head teacher and school staff for August 2016 will enable them to develop a curriculum rationale pertinent to the new school. They will also have a major influence over school building design and resource provision.
- 3.1.6 The children and staff will have a major role in establishing the vision, values and ethos for the new school.
- 3.1.7 The suitability of the new school building, for delivering a high quality educational experience, will be at the heart of the design process. It should be an attractive place to learn that inspires pupils to engage with the curriculum. The children, staff and parents will also be able to play a key role in influencing the design and layout of the new school.
- 3.1.8 The temporary accommodation would be resourced to the same high standard as any new school building including high quality ICT provision.
- 3.1.9 Children will be provided with a broad range of opportunities for personal achievement and interdisciplinary learning across all curriculum areas by building on best practice in curriculum design in Moray schools.
- 3.2 Likely effects for children currently attending the affected primary schools (New Elgin and East End Primary Schools).**
  - 3.2.1 By alleviating current and future capacity pressures on the existing schools, the ability to create flexible learning spaces in all schools will improve the range of learning environments across existing schools and the new school. This will allow aspirations, attainment and achievement to continue to improve across Moray primary schools.
  - 3.2.2 The proposal will bring a better balance between the numbers of pupils in the Elgin primary school communities and the capacities of these schools, ensuring the schools will have sustainable rolls which will deliver the full breadth of Curriculum for Excellence.
  - 3.2.3 The alleviated roll pressures will enhance the opportunity to create more adaptable environments for learning, in which to facilitate co-operative and interdisciplinary learning, reduce pressure on technology and practical teaching spaces, and improve the social environment.
  - 3.2.4 The curriculum in all schools will provide the opportunity for learners to achieve across all curricular areas and develop skills, attributes and capabilities through courses aligned with the design principles of Curriculum for Excellence: challenge and enjoyment, breadth, progression, depth, personalisation and choice, coherence and relevance.

### **3.3 Likely effects for children who become pupils of the affected schools in the next two years.**

- 3.3.1 Families who live in the new catchment area will have clear information on their zoned primary school, thereby providing a degree of certainty which may be lacking at the present time. This will have the benefit of removing the anxieties which children and parents have experienced in recent years over the availability of places in their zoned school.
- 3.3.2 The proposals will ensure that all Elgin primary schools will have clear and distinct associations with their local communities.
- 3.3.3 The new school will benefit from design practices which support the varied range of teaching environments that best deliver learning. Spaces for learning will be designed in such a way as to allow a range of teaching styles and approaches including: active learning, interdisciplinary learning and outdoor learning.
- 3.3.4 Experience in other new school buildings has demonstrated that a new and flexible learning environment has inspired pupils and has a positive impact on the general health and wellbeing of learners and increases aspirations, attainment and achievement.
- 3.3.5 In the new school, the provision of high quality technology for learning will provide the potential to transform ways of learning and teaching by giving young people and staff flexible access to a digital learning environment.
- 3.3.6 The proposed new school will provide excellent facilities for children, families and other users out with core school hours. The new school will provide accessible facilities that could be used to meet the learning, leisure and social needs of the community.

### **3.4 Likely effects on other users of the schools' facilities**

- 3.4.1 There would be no detriment to other users of the schools' facilities. The new school will build on current, and facilitate new, opportunities for effective integrated working with other services and partner agencies and will provide necessary support to children and families in the new school catchment area.

### **3.5 Likely effects on children and young people in other Moray Council schools**

- 3.5.1 This proposal will have no significant adverse impact on children attending other schools in Moray. This proposal has the potential to bring financial benefits to the Moray Council and therefore allow for a more equitable distribution of resources.



### **3.6 Other likely effects of the proposal**

- 3.6.1 The additional learning and teaching community at any new school will provide increased opportunities for collegiate working to share good practice, to improve curriculum development, to share thinking and materials across Elgin schools and to secure ongoing improvements in achievement. This will also result in greater scope for delivery of continued lifelong professional learning for all staff.
- 3.6.2 The new school building will have nursery provision to meet the increasing demand for nursery places in south-east Elgin.
- 3.6.3 The new school building will be designed in such a way as to promote accessible, inclusive learning which will meet the needs of all learners including those with Additional Support Needs. The new school will provide additional specialist provision to enhance the local authority's capacity to meet the needs of young people with Additional Support Needs to remain in mainstream education.

### **3.7 How the Council intends to minimise or avoid potential adverse effects**

- 3.7.1 An equality impact assessment has been carried out on this proposal and consultation process. This concludes that introducing this proposal will not have an adverse impact on any of the groups considered.
- 3.7.2 Teaching and support staff at the new school will work closely with all children and families to ensure that the learning, pastoral and social needs of children are fully supported during any transition process, including enhanced arrangements for children and young people with Additional Support Needs.

### **3.8 Summary of benefits resulting from implementation of this proposal**

- 3.8.1 The benefits are all highlighted in the preceding paragraphs, but they can be summarised as follows:
- the proposal will enable children to attend their zoned school and have a significant influence in the development of the new school's aims, values and ethos;
  - the proposal will help address the current and future over-crowding problems in Elgin primary schools;
  - the new school will provide greatly improved accommodation for the nursery children and school pupils, including those with Additional Support Needs, and staff; and
  - there is an opportunity here for the Council to make best use of the finances available, and make the most effective use of resources at a time when the need for these is acute.
- 3.8.2 The Council has arrived at these conclusions, initially, from a comprehensive analysis of historical placing requests within Elgin and a detailed study of future housing developments to determine the catchment area for the new school.



3.8.3 A detailed options appraisal was also undertaken to consider the best interim arrangement. The conclusions were that remodelling the former Heritage Centre at East End Primary School provided the best interim solution. This is viewed as maximising educational benefits and is the best value option considering the continued use that the education authority will be able to make of the accommodation after the new school has moved to its permanent site. This option will achieve the goal of reducing pupil roll pressure, can be achieved within the required time frame, and will establish an interim school and the investment will also provide a longer term benefit to the existing school. Further to this, the estimated timescale for building works is comparatively shorter when looking at the other options available, allowing for the primary 1 class to move in at the start of their school career in August 2016.

3.8.4 In delivering these broad benefits, the authority is confident that it is discharging its duty to secure best value by continuous improvement in the performance of its functions, as required under the Local Government in Scotland Act 2003.

#### **4. TRANSPORT ARRANGEMENTS**

4.1 In order to ensure the safety of pupils, whilst the new school is located at its initial site, it will be necessary to offer to provide transport for all children to temporary school accommodation from agreed pick up points in the catchment area.

4.2 Safe walking and cycling routes will be identified well in advance of the new school building opening on its permanent site. These will include new pedestrian and cycle paths leading from existing catchment area streets, including the Barlink Road area.

4.3 Any concerns regarding access to the site of the new school, crossing facilities, speed limits on the road and noise issues will be addressed. There will be appropriate signage and crossing patrollers at the new school as required, and parents will be kept updated through future stakeholder meetings.

#### **5. THE CONSULTATION PROCESS**

5.1 Formal consultation will run from 14<sup>th</sup> December 2015 – 4<sup>th</sup> February 2016 inclusive (30 school days).

5.2 As required by the Schools (Consultation) (Scotland) Act 2010, formal consultation will include:

- the preparation of this proposal paper;
- a letter to the parents/carers of children at New Elgin and East End Primary Schools
- a letter to the parents/carers of children aged 3-4 who live in the designated catchment area and will be due to enrol at school for August 2016 and August 2017;
- information for parents of younger children will be communicated via Facebook and other social media;
- information, including the proposal paper, placed on the Council's website;

- information on the proposal communicated through social media;
- an announcement of the proposal in the local press, inviting any person to make written representation to the Corporate Director (Education and Social Care);
- public meetings as shown below;
- a meetings with the parent Councils of the affected schools;
- consultation with the staff of the affected establishments;
- consultation with the pupil Councils of the affected schools;
- consultation with Elgin Community Council and the Elgin South Area Forum; and
- consultation with representatives of the teacher and support staff trade unions.

5.3 Formal Consultation Meetings are arranged as follows:

Date	Venue	Time
Wednesday 6 <sup>th</sup> January 2016	Elgin Town Hall (Supper Room)	14.00 – 15.30
Wednesday 6 <sup>th</sup> January 2016	Elgin Town Hall (Supper Room)	18.30 – 20.00

5.4 It is hoped that the Children and Young People's Services Committee of the Moray Council will be able to take a final decision on the proposals at its meeting on 27<sup>th</sup> April 2016.

## 6. INVOLVEMENT OF EDUCATION SCOTLAND

- 6.1 A copy of this proposal document has been sent to Education Scotland. Education Scotland will also receive a copy of any written representations that are received by Moray Council from any person during the consultation period. Education Scotland will also receive a summary of any oral representation made to the Moray Council at the public meetings and a copy of any other relevant documentation.
- 6.2 After the Moray Council has sent Education Scotland all representations and documents mentioned above, Education Scotland will prepare a report on the educational aspects of the proposal. In preparing their report, Education Scotland may visit the affected establishments and make such reasonable enquiries of such people there, or such other people as they consider appropriate.
- 6.3 On receipt of the Education Scotland report, it will be necessary to review the proposal, and thereafter, the Corporate Director (Education and Social Care), on behalf of the education authority, will prepare and publish a consultation report, containing the views of Education Scotland and including an explanation of how the Moray Council proposes to deal with any issues raised. After a period of no less than three weeks, the Moray Council will consider the consultation report and decide whether or not to approve the proposals.

## 7. **NOTE ON CORRECTIONS**

- 7.1 If any apparent inaccuracy or omission is discovered in this proposal document either by the Moray Council or any person, the Moray Council will determine if relevant information has been omitted or if there has been an inaccuracy. If it is determined that there has been an inaccuracy or omission the Moray Council will then take appropriate action which may include the issue of a correction or the reissuing of the proposal paper or the revision of the timescale for the consultation period as appropriate. In that event, any person highlighting the inaccuracy to the Moray Council, relevant consultees and Education Scotland will be advised.

## 8. **EQUALITY STATEMENT**

- 8.1 An equality impact assessment has been carried out on these proposals and consultation process to assess the proposal's relevance to the public sector equality duties on the basis of:
- Sex
  - Religion
  - Racial group
  - Disability
  - Sexual orientation
  - Gender reassignment
  - Pregnancy and maternity
- 8.2 The equality impact assessment concluded that introducing these proposals will not have an adverse impact on any of the groups listed. Any impacts identified through the consultation process will be investigated prior to the final consultation report being issued and a decision being made.

## 9. **SUBMISSION OF VIEWS**

- 9.1 Responses to the consultation should be made by writing to:  
South-East Elgin Primary School Consultation  
The Moray Council  
Community Support Unit  
High Street  
Elgin  
IV30 1BX

or by e-mail to: [futureschools@moray.gov.uk](mailto:futureschools@moray.gov.uk)  
or by completing the attached consultation response form  
or by completing the on-line consultation form by following the links at [www.moray.gov.uk](http://www.moray.gov.uk)

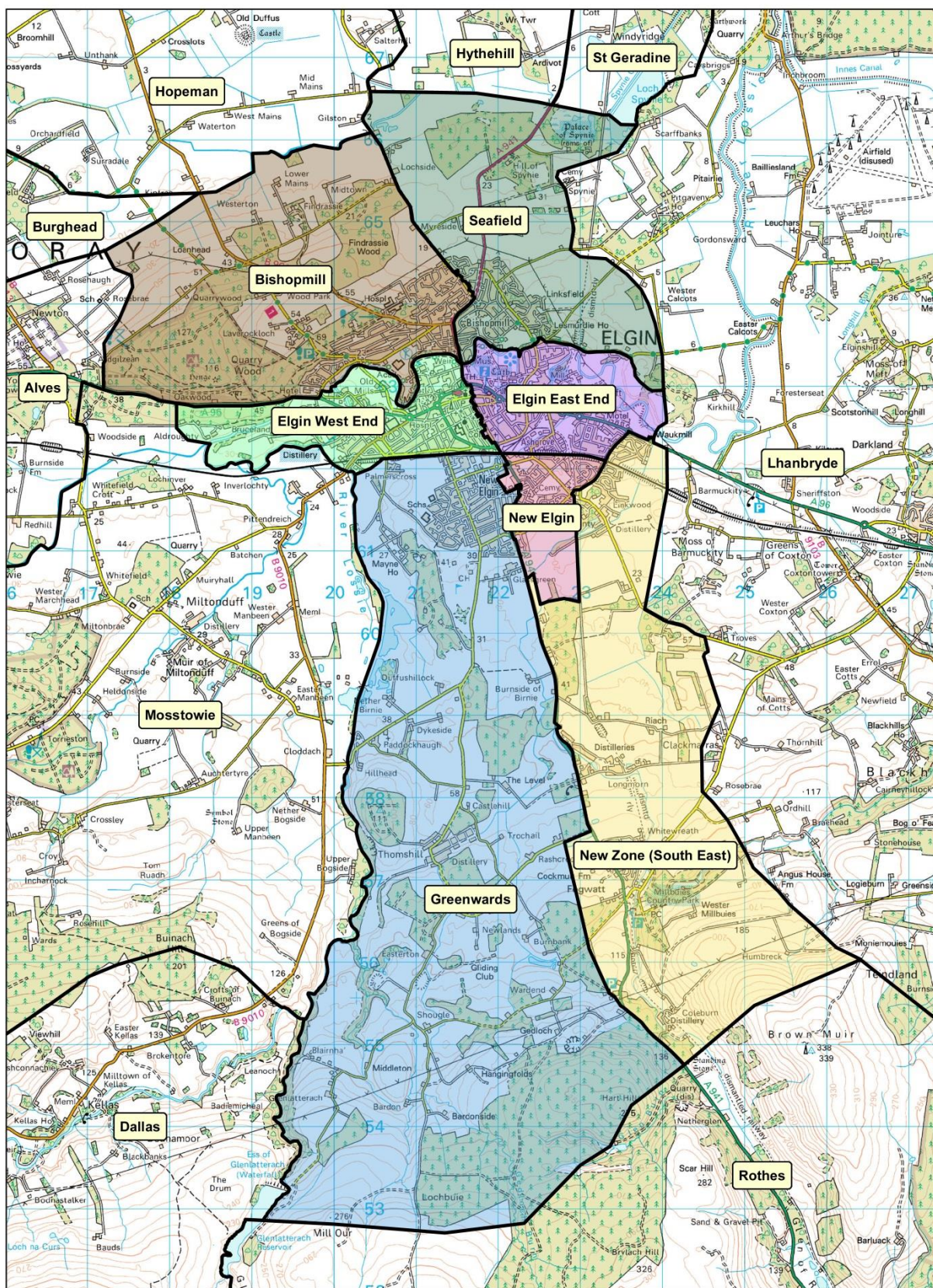
All responses **must** be submitted by **5pm on Thursday 4<sup>th</sup> February 2016** for them to be taken into account as part of the consultation.

## **10. OUTCOME OF CONSULTATION**

- 10.1 It is intended that a consultation report including a summary of the submissions will be published on the Council website. This will be available by following the links at: [www.moray.gov.uk](http://www.moray.gov.uk)
- 10.2 It is intended that a report on the consultation will be presented to the Children and Young Peoples Services Committee on 27<sup>th</sup> April 2016. This will provide information for Elected Members to make a final decision on the proposal.



Proposal Paper: Appendix 1



Moray Council

Approved Primary School Catchments January 2016

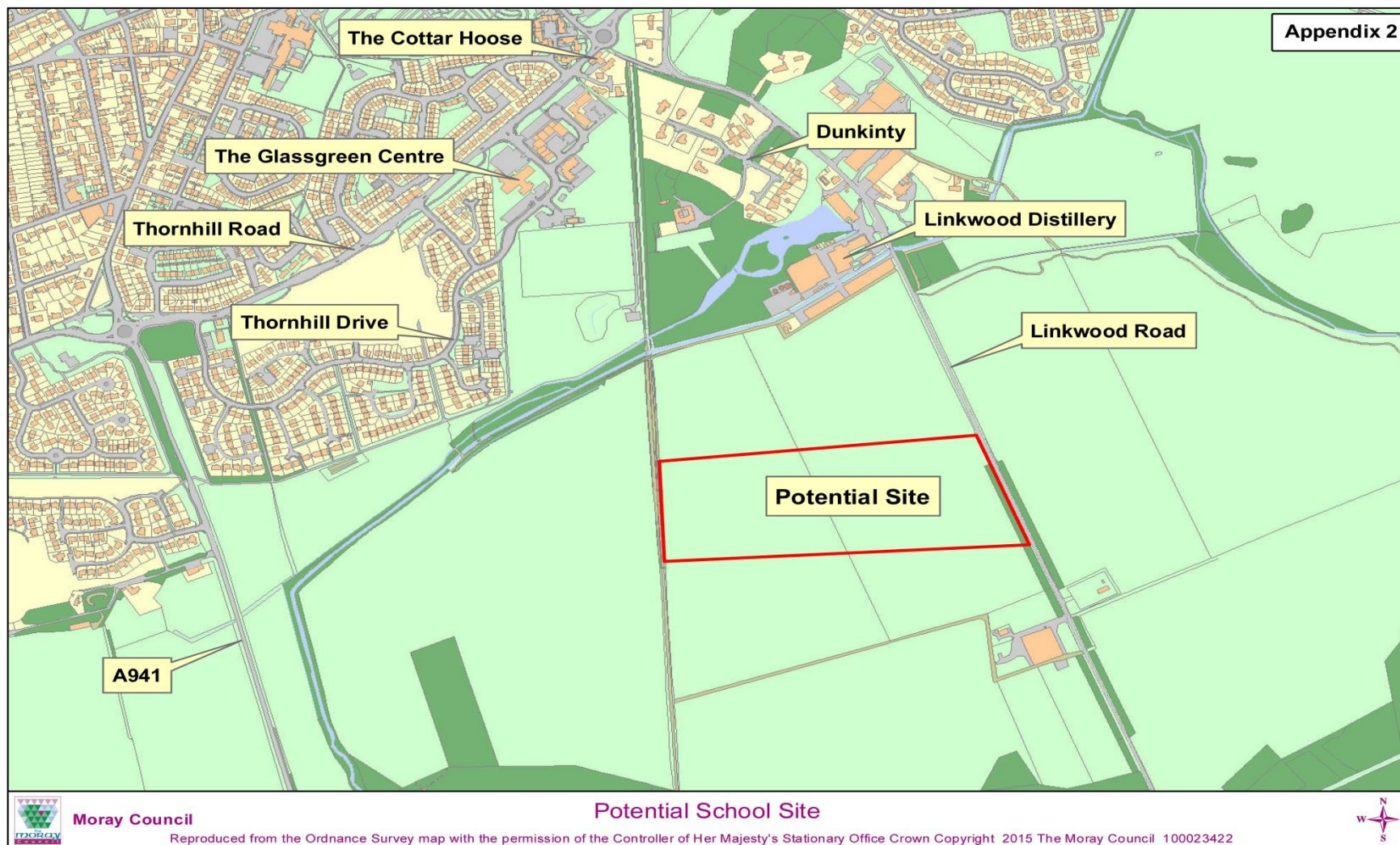
Reproduced from the Ordnance Survey map with the permission of the Controller of Her Majesty's Stationary Office Crown Copyright 2015 The Moray Council 100023422

1:40,000





Proposal Paper: Appendix 2



---

## Appendix B: EDUCATION SCOTLAND REPORT

---

**Report by Education Scotland addressing educational aspects of the proposal by The Moray Council to establish a new primary school for south-east Elgin, initially in temporary accommodation based at East End Primary School.**

### 1. Introduction

1.1 This report from Education Scotland has been prepared by HM Inspectors in accordance with the terms of the *Schools (Consultation) (Scotland) Act 2010* and the amendments contained in the *Children and Young People (Scotland) Act 2014*. The purpose of the report is to provide an independent and impartial consideration of The Moray Council's proposal:

- to establish a new primary school, with nursery provision, to serve an agreed catchment area for a delineated geographical zone in south-east Elgin;
- to establish the new school initially at a temporary site at East End Primary School Annexe until the new school building is complete. The temporary accommodation will initially accommodate children at P1 and will accommodate those at P1-P3 in future years;
- the implementation date for establishing the new school at its temporary site will be 15 August 2016. The nursery provision will commence once the new school building opens; and
- the new school will relocate to its permanent site on the completion of the new school building. The target date for this is August 2018.

Section 2 of the report sets out brief details of the consultation process. Section 3 of the report sets out HM Inspectors' consideration of the educational aspects of the proposal, including significant views expressed by consultees. Section 4 summarises HM Inspectors' overall view of the proposal. Upon receipt of this report, the Act requires the Council to consider it and then prepare its final consultation report. The Council's final consultation report should include a copy of this report and must contain an explanation of how, in finalising the proposal, it has reviewed the initial proposal, including a summary of points raised during the consultation process and the Council's response to them. The Council has to publish its final consultation report three weeks before it takes its final decision. Where a Council is proposing to close a school, it needs to follow all legislative obligations set out in the 2010 Act, including notifying Ministers within six working days of making its final decision and explaining to consultees the opportunity they have to make representations to Ministers.

1.2 HM Inspectors considered:

- the likely effects of the proposal for children and young people attending East End Primary School and New Elgin Primary School; any other users; children likely to become pupils within two years of the date of publication of the proposal paper; and other children and young people in the Council area;

- any other likely effects of the proposal;
- how the Council intends to minimise or avoid any adverse effects that may arise from the proposal; and
- the educational benefits the Council believes will result from implementation of the proposal, and the Council's reasons for coming to these beliefs.

1.3 In preparing this report, HM Inspectors undertook the following activities:

- attendance at the public meeting held on 6 January 2016 in connection with the Council's proposals;
- consideration of all relevant documentation provided by the Council in relation to the proposal, specifically the educational benefits statement and related consultation documents, written and oral submissions from parents and others;
- consideration of further information on all schools affected, including media articles and The Moray Council's documentation regarding safety around schools; and
- visits to the sites of East End Primary School and New Elgin Primary School, including discussion with relevant consultees.

## 2. Consultation Process

- 2.1 The Moray Council undertook the consultation on its proposal(s) with reference to the *Schools (Consultation) (Scotland) Act 2010* and the amendments in the *Children and Young People (Scotland) Act 2014*.
- 2.2 The consultation ran from 14 December 2015 to 4 February 2016. The Council held two public meetings on 6 January 2016 at Elgin Town Hall. It sought views from a range of stakeholders, held meetings with parents and staff in East End and New Elgin Primary Schools and sought the views of pupils. Of 365 people who responded to an online/paper survey, almost all agreed with the building of a new school, and an overall majority agreed with its temporary location at East End Primary School Annexe. Of 23 additional written responses received, three supported the proposal for the new school. Of 190 East End Primary School pupils who responded to the survey questions, a majority supported the building of the new school but opposed its temporary location in the school's annexe. Many respondents to the survey expressed concerns related to traffic management around East End Primary School and sought clarification about practical issues regarding use of accommodation if the new temporary school was located in the annexe of East End Primary School.



### 3. Educational Aspects of Proposal

- 3.1 Overall, the proposal has a number of potential educational benefits for current and future learners. It will lead to improvements in the quality of learning environments, particularly for children who are zoned to attend the new school and those who attend New Elgin Primary School, which is currently operating above capacity. The proposal will also assist the Council in aiming to achieve best value by addressing capacity issues across its school estate in the Elgin area.
- 3.2 The aspect of the proposal relating to the establishment of a new school in south-east Elgin has potential educational benefits. These relate to the easing of over-capacity issues across Elgin's schools and the creation of additional capacity for nursery and primary school aged children. The proposed new school has the potential to support the full delivery of Curriculum for Excellence in purpose-built accommodation which is accessible and inclusive to all learners, includes flexible learning spaces with potential to enhance learners' experiences. The proposal for the new school also has potential benefits for the community in terms of access to accessible learning and leisure facilities.
- 3.3 The aspect of the proposal to establish the new school initially at a temporary site at East End Primary School Annexe has potential educational benefits for children attending the new school. These include children, parents and staff in the new school being able to be fully involved in the planning, development, designing, vision and identity of the new school from the outset. Although children would move buildings when the proposed new school is built, by being part of the 'new school' from the outset, children should experience less disruption to their learning. Staff, parents and children of New Elgin Primary School who met with HM Inspectors are supportive of the establishment of the new school at the temporary site at East End Primary School Annexe. Given that New Elgin Primary School is currently operating over capacity, this aspect of the proposal has the potential to enhance children's learning opportunities.
- 3.4 Stakeholders at East End Primary School who met with HM Inspectors have concerns about the proposal. In the longer term these concerns are reasonable, given that the East End Primary School roll is forecast to rise. Stakeholders recognise that the refurbishment of the Annexe building will benefit children at East End Primary School once the new school is opened. However, concerns included the fact that the target date for completion of the new school's building may not be met, and the negative impact that this may have on East End Primary School. Stakeholders are anxious that children attending East End Primary School will have reduced access to areas of the school, including the gym hall, canteen and playground. The Council has acknowledged that aspects of how the Annexe accommodation would be used could be reviewed with the senior management team of East End Primary School. In taking forward its proposal, the Council will need to work closely with stakeholders from East End Primary School to clarify how it will address their concerns. In doing this it needs to explain clearly how children attending the

temporary new school will experience a broad range of learning experiences with older and younger children within a 'shared campus' environment.

- 3.5 Stakeholders and other members of the local community have existing, legitimate concerns over traffic and the safety of children around East End Primary School. They believe that additional traffic resulting from children attending the temporary new school will make matters worse. Traffic congestion was observed during the HM Inspector's visit to the school. The Council should respond to stakeholders' concerns regarding traffic management, reviewing school travel plans, communicating with stakeholders and the wider community around East End Primary School, as appropriate.
- 3.6 With the proposed opening of the temporary school in August 2016, the timescale for the refurbishment of the Annexe, appointment of staff and transition for new P1 children may prove challenging. Various transition programmes have already started for children due to begin P1 in New Elgin and East End Primary Schools. As a matter of urgency, the Council needs to share its plans to support children's transition into P1 at the temporary accommodation in August 2016 and for the continuity of their learning.

#### **4. Summary**

The proposal has a number of potential educational benefits for learners, leading to improvements in the quality of learning environments, particularly for children who are zoned to attend the new school and those attending New Elgin Primary School. A new school building has potential educational benefits for learners, including supporting the full delivery of Curriculum for Excellence in purpose-built accommodation which is accessible and inclusive to all learners. The proposal also has potential benefits to the community. The aspect of the proposal to establish the new school initially at a temporary site at East End Primary School Annexe has potential educational benefits for children attending the new school. The proposal will also assist the Council to achieve best value by addressing capacity issues across its school estate in the Elgin area. In finalising its proposal, the Council will need to show how it has taken account of any issues and reasonable concerns raised by stakeholders during the consultation or in discussion with HM Inspectors.

**HM Inspectors**  
**Education Scotland**  
**February 2016**

---

## **Appendix C: SUMMARY OF PUBLIC MEETINGS AND WRITTEN RESPONSES**

---

A summary of the public meetings is available at:

<http://www.moray.gov.uk/downloads/file102942.pdf>

A summary of the comments and enquiries received is available at:

<http://www.moray.gov.uk/downloads/file102999.pdf>