



EDUCATION AND SOCIAL CARE

Rezoning Forres ASG Primary Schools

CONSULTATION REPORT

28 NOVEMBER 2016

Contents

1. INTRODUCTION.....	1
Background	1
Proposals.....	1
Purpose of Consultation	1
Consultees.....	1
Reviewing the proposal	1
2. ANALYSIS OF RESPONSES TO CONSULTATION.....	2
Summary	2
Response Analysis	2
3. SUMMARY OF MAIN ORAL POINTS RAISED and EDUCATION AUTHORITY RESPONSE	3
4. SUMMARY OF WRITTEN POINTS RAISED and EDUCATION AUTHORITY RESPONSE	4
Issues	4
5. REPORT BY EDUCATION SCOTLAND and EDUCATION AUTHORITY RESPONSE	6
6. CONCLUSIONS AND RECOMMENDATIONS	7
Appendix A: REVISED CATCHMENT AREA MAP	9
Appendix B: PROPOSAL PAPER	10
Appendix C: EDUCATION SCOTLAND REPORT	26
Appendix D: SUMMARY OF PUBLIC MEETINGS AND WRITTEN RESPONSES..	29



1. INTRODUCTION

Background

At its meeting on 22 June 2016 The Moray Council's Children and Young Peoples Services Committee agreed to formally consult on proposals to rezone five of the Forres Associated Schools Group primary schools.

Proposals

It was proposed to vary the catchment areas of Alves, Anderson's, Applegrove, Kinloss and Pilmuir Primary Schools based on geographical areas which are delineated on plans.

Maps showing current and proposed catchment areas and the proposal paper can be seen in **Appendices A and B**.

Purpose of Consultation

Varying the catchment area of a school requires a formal consultation to be carried out in accordance with the Schools (Consultation) (Scotland) Act 2010. This report documents the formal consultation undertaken on these proposals between 22 August and 30 September 2016.

Consultees

During the consultation period, views were sought from a range of stakeholders and interested parties including:

- Parents (of children of school and pre-school ages)
- Pupils
- Teaching and support staff
- Parent Councils
- Community Councils
- Local Negotiating Committee for Teachers (LNCT)
- Trade Unions
- Others, including the Council's Planning and Development Services.

Reviewing the proposal

The written and oral responses were analysed by the Council's Senior Education Adviser (Schools Consultations). The main issues arising have been considered by the Corporate Director (Education and Social Care), Head of Life Long Learning, Culture and Sport and Senior Education Adviser and the Corporate Director (Education and Social Care) has provided the Education Authority response to the issues. This analysis and response and the contents of the Education Scotland report inform the conclusions and recommendations in this report.

2. ANALYSIS OF RESPONSES TO CONSULTATION

Summary

As part of the consultation the Council conducted a survey (on-line and paper) to ascertain people's views.

The survey asked if respondents agreed with the proposed revised catchment areas for Alves, Anderson's, Applegrove, Kinloss and Pilmuir Primary Schools.

There were a total of 11 responses to the survey with some respondents expressing views on more than one of the school catchment area proposals.

Response Analysis

School Catchment Area	Number of Survey Responses	Number Agree	Number Disagree
Alves	8	5	3
Anderson's	9	7	2
Applegrove	9	6	3
Kinloss	8	5	3
Pilmuir	11	9	2

Given the small number of responses it was not possible to draw any meaningful conclusions from the results of the survey.

3. SUMMARY OF MAIN ORAL POINTS RAISED and EDUCATION AUTHORITY RESPONSE

Most questions at the public meetings were of a factual nature and were responded to at the meetings. These included: no requirement for children to move school, transport arrangements, safe routes to school, placing requests, school capacities, and housing developments. The main issues are listed below along with the Education Authority's response.

Issues

1. There were questions over the impact of any potential closure of Kinloss barracks on roll forecasts and the proposals.

It was confirmed that the proposals had been agreed before there was any mention of the possible closure of Kinloss barracks; therefore the consultation had to proceed as planned. Should Kinloss barracks close, the impact will be assessed at some future point; however the intention is to review catchment areas every 5-6 years in any case.

2. Revisions to catchment areas may mean that some children would be living further from their zoned school than at present.

This point is accepted; however any catchment area changes will inevitably mean that some children may live further from their zoned school, while others may live closer.

4. SUMMARY OF WRITTEN POINTS RAISED and EDUCATION AUTHORITY RESPONSE

Three written responses were received along with eight written comments in the on-line survey. The main issues raised in written correspondence are listed below along with the Education Authority's response.

Issues

- 1. There were a number of positive comments in favour of the proposals including increased school roll, enhanced staffing levels and management structures.**

These points are noted.

- 2. Some concerns were raised over the condition and suitability of current accommodation.**

These points are noted and will be addressed through the Council's planned schools' maintenance programme.

- 3a. Retain the area to the north of the A96, west of the Mosset Burn and east of the River Findhorn in the Anderson's Primary catchment area due to potential shorter walking/cycling route to school, after school activities and possible transport costs.**

See 3b below.

- 3b. Employment land sites identified in the Local Development Plan and the area to the east of Forres, north of the A96 (Cassieford) running to the east as far as the roundabout at the Enterprise Park should be retained within the Forres schools catchment area (Anderson's Primary). In the long term this may be a good location for a new school.**

The part of the current Anderson's Primary catchment area which lies to the north of the A96 could be retained in the Anderson's Primary catchment area rather than changing to the Kinloss Primary catchment area, as had been proposed. This would satisfy the above points and will be recommended to Councillors when they consider whether to implement the proposal. The possibility of relocating Anderson's Primary to a new location in the area suggested will be kept under review but does not form part of the current proposal being consulted on.

4. Reduce the number of schools, including closing Logie, Dallas and Alves Primary Schools and possibly one Forres town primary school.

This was not part of the current proposals but may be something which the Council might wish to consider as part of any future review of school estate provision within Moray.

5. REPORT BY EDUCATION SCOTLAND and EDUCATION AUTHORITY RESPONSE

The main points from the Education Scotland report were:

- The Moray Council has set out a clear rationale for the proposal and has consulted stakeholders well.
- The council is taking positive steps to create a more sustainable school roll within the smaller school communities. They rightly make clear the need to ensure a sufficiency of school places across the five communities.
- The proposal sets out to retain and enhance flexible learning spaces in each of the schools.
- Proportionally, the council received few responses to the survey. It has however listened to the views of families regarding the proposal and given reassurance where required.

The Council's response is that the Education Scotland report is supportive of the Council's proposals and there are no specific actions or amendments required as a result of the Education Scotland report.

6. CONCLUSIONS AND RECOMMENDATIONS

Reviewing the proposal

Officers of the Education Authority have listened carefully to the points made at the public meetings and have considered equally carefully the written representations and the report from Education Scotland. The main issues arising have been considered by the Corporate Director (Education and Social Care), Head of Life Long Learning, Culture and Sport and Senior Education Adviser and the Corporate Director (Education and Social Care) has provided an Education Authority response to the issues in terms of powers delegated to him.

Summary

1. There are clear educational benefits to the proposals. Implementing the proposals will help to ensure a sufficiency of school places across the five communities and create a more sustainable school roll within the smaller school communities.
2. The proposals will help to retain and enhance flexible learning spaces in each of the schools.
3. In response to submissions from members of the public and the Council's Planning and Development Department it is recommended that the part of the current Anderson's Primary catchment area which lies to the north of the A96 could be retained in the Anderson's Primary catchment area, rather than changing to the Kinloss catchment area.

Conclusions

The Council now has four broad options for the proposed changes:

- a) abandon the proposals and maintain the status quo; or
- b) adopt the proposals in their entirety; or
- c) adopt each proposal in whole or in part and maintain the status quo for other parts of the proposal(s); or
- d) amend each specific proposal in some way and undertake a further consultation exercise on each new proposal.

Recommendations

Having considered all of the written and oral submissions, along with the report from Education Scotland, officers recommend:

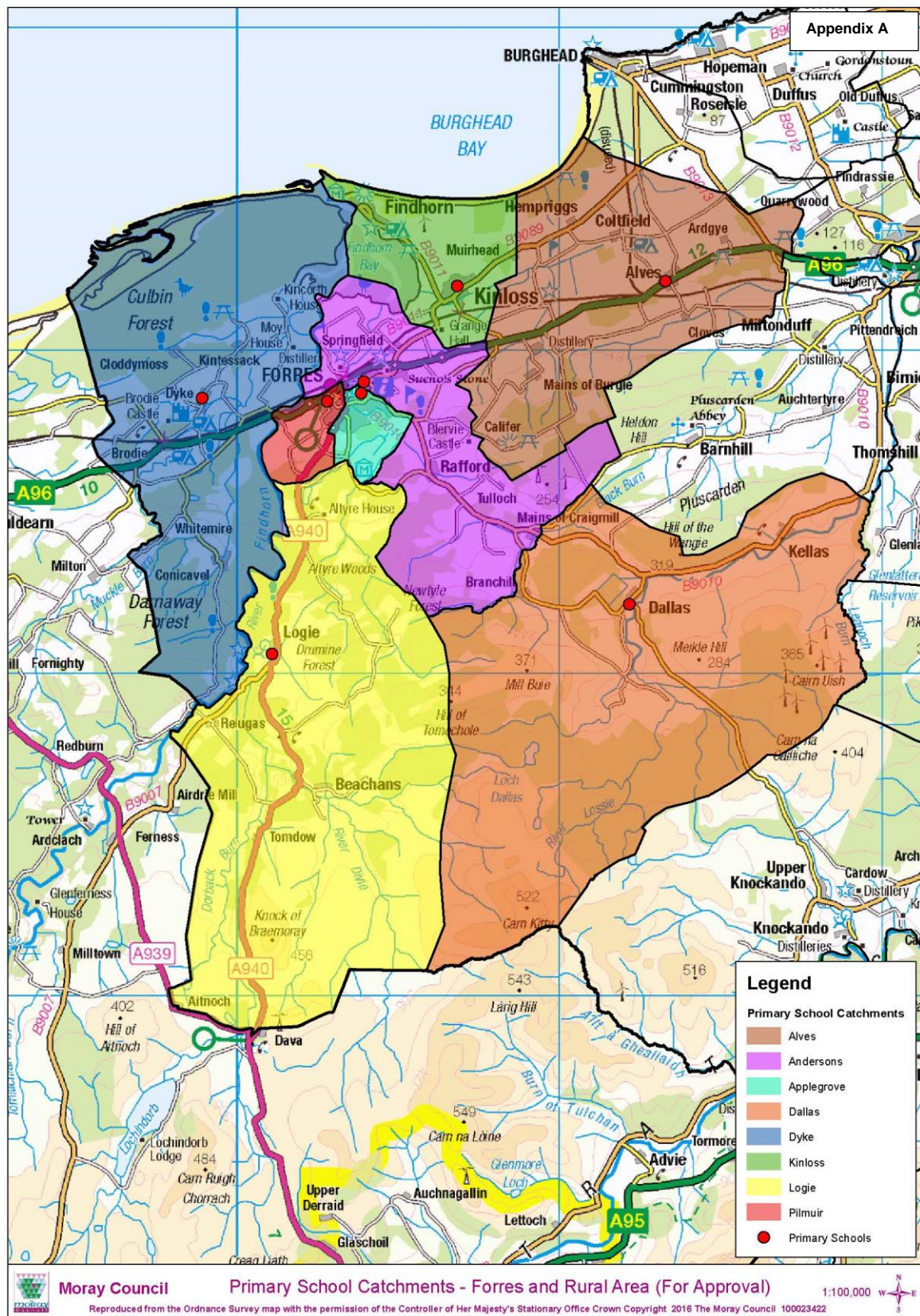
1. Implementing the revised catchment areas for Alves, Applegrove and Pilmuir Primary Schools.
2. Implementing the revised catchment areas for Anderson's and Kinloss Primary Schools in part by retaining the current part of the Anderson's Primary

catchment area which lies to the north of the A96 in the Anderson's catchment area rather than it changing to the Kinloss Primary School catchment area.

A map showing the revised delineations of the catchment areas now recommended for implementation is shown as **Appendix A** to this report.

3. Officers further recommend, as future house building in Forres takes place, exploring the possibility of relocating Anderson's Primary School to a new location in the area suggested in the response to the consultation. Any such relocation proposal would form part of a separate proposal and consultation process.

Appendix A: REVISED CATCHMENT AREA MAP



Appendix B: PROPOSAL PAPER



THE MORAY COUNCIL

Proposal Paper

To vary the catchment areas of Alves, Anderson's, Applegrove, Kinloss and Pilmuir Primary Schools.

Statutory Consultation Period:

Monday 22nd August – Friday 30th September 2016 inclusive (30 school days)

All submissions expressing views on the proposals detailed in this document must be submitted by 5.00pm on 30th September 2016 for them to be taken into account as part of the consultation.

It is intended to respond to issues raised from correspondence within a consultation report that will be published before the Children and Young Peoples Services Committee on 25th January 2017.

This document has been issued by the Moray Council for consultation in terms of the Schools (Consultation) (Scotland) Act 2010.



1. **THE PROPOSALS**

- 1.1 It is proposed to vary the catchment areas of Alves, Anderson's, Applegrove, Kinloss and Pilmuir Primary Schools based on geographical areas which are delineated on plans contained within this document and described below.
- 1.2 It is proposed that the implementation dates for these proposals will be 14th August 2017.

2. **BACKGROUND**

- 2.1 A pilot review, was undertaken by the Council of the Forres Associated Schools Group (comprising Forres Academy, Alves, Anderson's, Applegrove, Dallas, Dyke, Kinloss Logie and Pilmuir Primary Schools) using its 'Schools for the Future Criteria' as reported to the Children and Young People's Services Committee on 2nd March 2016. 'Schools for the Future' is a policy designed to provide a transparent basis from which The Moray Council can review its school estate. This review indicated that there is justifiable case for retaining three primary schools in Forres town. However, as a result of various factors including demographics, new housing developments and transport issues, certain primary schools in the Forres Associated Schools Group (ASG) may experience capacity problems in the future. As a result it was recommended that the catchment areas (zones) of some of the Forres ASG primary schools should be reviewed.
- 2.2 Future housing developments in the current Anderson's Primary School zone, along with enrolment trends, indicate that Anderson's Primary could exceed capacity in the future. In the longer term relocating Anderson's Primary may need to be considered.
- 2.3 Pilmuir Primary School has the capacity to accommodate approximately an additional 80 pupils. There are certain parts of Forres, currently zoned to Applegrove Primary, which would have safer walking or cycling routes to Pilmuir Primary.
- 2.4 There may be increased roll pressures on Kinloss Primary in the future. There are also new housing developments lying on the Alves/Kinloss catchment area boundary. Alves Primary currently has considerable capacity for additional pupils and there is scope for increasing the Alves roll as a result of realigning its catchment area.
- 2.5 If primary school zones remain unaltered the following table provides roll forecasts for the Forres ASG primary schools, based on 2015 census:

School	Functional Capacity**	Current Roll*	Roll Forecasts						
			2016	2017	2018	2019	2020	2021	2022
Alves	100	49	54	56	58	55	50	51	51
Anderson's	307	267	264	255	267	260	254	264	277
Applegrove	419	287	278	300	309	315	318	320	317
Dallas	50	26	24	19	17	15	12	12	10
Dyke	100	90	93	89	83	82	80	82	78
Kinloss	299	235	243	270	286	293	310	317	330
Logie	75	33	34	29	25	25	20	21	16
Pilmuir	249	168	169	173	175	161	156	150	157

*Census Data September 2015

** Functional Capacity 2015/16 – based on current national guidelines and current Moray Council practice.

- 2.6 For information, the number of out of zone pupils for each of the schools is given in the table below.

School	Current Roll*	Number of out of zone pupils	% out of zone pupils
Alves	49	13	26.5%
Anderson's	267	152	56.9%
Applegrove	287	82	28.6%
Dallas	26	2	7.6%
Dyke	90	44	48.9%
Kinloss	235	11	4.7%
Logie	33	14	42.4%
Pilmuir	168	59	35.1%

*Census Data September 2015

Previous analysis across Moray has identified the following as the main reasons behind the requests:

1. Change of address (moving house and wishing to remain at current school).
 2. Siblings already attend the school.
 3. Child attended playgroup or nursery at that school.
 4. Child-minder lives close by the school.
- 2.7 At its meeting on 22nd June 2016 the Children and Young Peoples Services Committee agreed to formally consult on the above proposals in terms of the Schools (Consultation) (Scotland) Act 2010.
- 2.8 Proposals for altering the catchment areas of some of the Forres ASG primary schools will ensure that rezoning takes appropriate cognisance of safe routes to school and that schools have the capacity to enable children, who are living within an area zoned for a particular school, to attend that school.

- 2.9 Three Forres ASG primary schools are not included in the proposals for the following reasons:

2.9.1 Dallas Primary

There are no realistic changes which could be made to the Dallas Primary School catchment areas which could result in a significantly increased roll for the school. Therefore, having considered all of the current catchment areas in the Forres ASG, officers recommend there would be no benefits to rezoning Dallas Primary at this time.

2.9.2 Dyke Primary

The roll of Dyke Primary School is close to its current functional capacity of 100 and roll forecasts indicate that it is likely to remain around 80. The roll needs to be carefully monitored, particularly out-of-zone placing requests into the school, to ensure the school does not exceed capacity in the future and reserving places for in-zone pupils needs to be considered, however there would be no benefits to rezoning Dyke Primary at this time.

2.9.3 Logie Primary

There are no realistic changes which could be made to the Logie Primary School catchment area which could result in a significantly increased roll for the school. Therefore there are no changes recommended to the Logie Primary catchment area at this time.

THE PROPOSALS

- 2.10 Proposals for individual primary schools in the Forres ASG are given below.

2.10.1 Alves Primary

The Alves school catchment area should be revised in order to make better use of the school's capacity, by potentially increasing the roll, therefore helping reduce possible capacity problems elsewhere. The catchment area boundary should be moved further to the west to incorporate rural areas, some with new housing developments, which are currently zoned to Kinloss Primary and also rural areas to the south of the A96 currently zoned to Anderson's Primary.

2.10.2 Anderson's Primary

The increasing roll needs to be carefully monitored to ensure the school does not exceed its capacity. In the short to medium term the catchment area boundary should be moved south to the A96, rezoning the area to the north of the A96 to Kinloss Primary, with the area to the west of the A940 and south of the A96 zoned to Pilmuir Primary. Part of the rural catchment area, to the south of the A96 should be rezoned to Alves Primary. In the longer term, new house-building in the east of Forres could mean that Anderson's Primary exceeds capacity and it may be necessary to investigate the potential for relocating the school in a new build, with greater capacity, in the future.

2.10.3 Applegrove Primary

The increasing roll needs to be carefully monitored to ensure the school does not exceed its capacity in the future. The area to the west of the A940 is zoned to Applegrove Primary but most of this area lies closer to Pilmuir Primary, with safer walking and cycling routes to Pilmuir Primary. This area should be rezoned to Pilmuir Primary. In addition, some of the new housing at Knockomie (South) should also be zoned to Pilmuir Primary, rather than Applegrove Primary, and there is a suitable safe road crossing of the A940 from Knockomie (South) leading to Pilmuir Primary.

2.10.4 Kinloss Primary

The transient roll needs to be carefully monitored, particularly in relation to potential impacts of an increase in roll on accommodation. The catchment area should be revised in the east (with rezoning to Alves Primary as described in 2.10.1) and the south and west (with rezoning from Anderson's Primary as described in 2.10.2).

2.10.5 Pilmuir Primary

Pilmuir Primary currently has the capacity to accommodate at least an additional 80 children. There is also significant under used nursery accommodation at Pilmuir Primary which, if nursery numbers were to increase, could result in an increased demand for enrolment into Pilmuir Primary. The area to the west of the A940 and south of the A96 should be rezoned from Anderson's Primary to Pilmuir Primary (as described in 3.10.2) and the area to the west of the A940 which is zoned to Applegrove Primary should be rezoned to Pilmuir Primary (as described in 2.10.3). In addition, some of the new housing at Knockomie (South) should also be zoned to Pilmuir Primary as there is a suitable safe road crossing of the A940.

- 2.11 The appendices to this proposal paper contain maps showing school catchment areas. These are: current Forres ASG (**Appendix 1**); current Forres town, including areas designated for new house-building (**Appendix 2**); proposed Forres ASG (**Appendix 3**); proposed Forres town (**Appendices 4 and 5**).

3. TRANSITION ARRANGEMENTS

- 3.1 Pupils living in the affected areas detailed in Section 2 who have already commenced their primary education at the time the new school zones become applicable can remain in their chosen primary school. No existing primary school pupils will be required to move school when new zones are established unless that is by parental choice.
- 3.2 Parents of children who make in-zone placing requests and subsequently enrol in their catchment area schools after catchment areas change, and have older siblings in the schools which would have been the zoned school under the previous catchment areas, will have to make out-of-zone placing requests if they wish to attend the same school as their older sibling.



4. TRANSPORT ARRANGEMENTS

- 4.1 While zoning is important in addressing capacity issues in Forres, pupil safety is also of paramount importance. These proposals are designed to make travel to school as safe as possible.
- 4.2 Moray Council currently provides free school transport for primary school pupils who reside more than 2 miles from their designated zoned school, determined following any decision on zoning taken by the Moray Council.
- 4.3 Parents who make successful placing requests for their children to attend schools, other than their catchment area school, have to make their own transport arrangements and meet the costs thereof.
- 4.4 School travel plans are an essential part of the Moray Council's strategy to address issues related to transport to school. School travel plans also include promotion of initiatives to increase the number of children who walk or cycle to school. School travel plans can help reduce congestion, increase road safety, make routes to school safer, help protect the environment and encourage children to adopt healthy lifestyles.
- 4.5 If these proposals are adopted there should be no significant changes to school transport arrangements for eligible pupils. However, it is recognised that there may be changes to methods of travel for some pupils who will, in the future, be within closer walking or cycling distance to their zoned school. School travel plans will require to be revisited once school catchment areas are confirmed. These will be available prior to the effective dates of new school zones.

5. EDUCATIONAL BENEFITS STATEMENT

- 5.1.1 Families who live in the affected areas will have clear information on their zoned primary school. Pupils who are resident within the delineated zone for a school will be able to attend their zoned school and be taught with peers from their community. The proposals will ensure that all Forres ASG primary schools will have clear and distinct associations with their local communities.
- 5.1.2 Revised catchment areas will have a positive impact on the balance between the numbers of pupils in the Forres ASG primary school communities, Forres town schools in particular. It will help alleviate projected pupil roll pressures from potential housing developments identified in the adopted Local Development Plan.
- 5.1.3 If any younger siblings are zoned to a different school to an older sibling, following catchment area changes, their parent may make an out-of-zone placing request to the same school as an older sibling. The Council policy on Admissions to Schools will apply as usual.

5.2 Likely effects for children currently attending Forres ASG primary schools

- 5.2.1 By alleviating current and future capacity pressures on the existing school estate, the ability to create flexible learning spaces in all schools will improve the range of learning environments across the schools. This will allow aspirations, attainment and achievement to continue to improve across Moray primary schools.
- 5.2.2 The proposals will bring a better balance between the numbers of pupils in the Forres primary school communities and the capacities of these schools, ensuring the schools will have sustainable rolls which will deliver the full breadth of Curriculum for Excellence.
- 5.2.3 The alleviated roll pressures will enhance the opportunity to create more adaptable environments for learning, in which to facilitate co-operative and interdisciplinary learning, reduce pressure on technology and practical teaching spaces, and improve the social environment.
- 5.2.4 The curriculum in all schools will provide the opportunity for learners to achieve across all curricular areas and develop skills, attributes and capabilities through courses aligned with the design principles of Curriculum for Excellence: challenge and enjoyment, breadth, progression, depth, personalisation and choice, coherence and relevance.
- 5.2.5 Children and young people will be provided with a broad range of opportunities for personal achievement and interdisciplinary learning across all curriculum areas and subjects by building on best practice in curriculum design in Moray schools.

5.3 Likely effects for children who become pupils of Forres ASG primary schools in the next two years.

- 5.3.1 There would be no detriment to future users of the provision.
- 5.3.2 Where new zones for Alves, Anderson's, Applegrove, Kinloss and Pilmuir primaries become applicable, children who have had places accepted at their in-zone schools will enrol in these schools from the effective date following any decision of the Moray Council Children and Young People's Services Committee to implement changes to the catchment areas.

5.4 Likely effects on other users of the schools' facilities

There would be no detriment to other users of the schools' facilities.



5.5 Likely effects on children and young people in other Moray Council schools

This proposal will have no significant adverse impact on children attending other schools in Moray. This proposal has the potential to bring financial benefits to the Moray Council and therefore allow for a more equitable distribution of resources.

5.6 Other likely effects of the proposal

No other effects of the proposal have been identified.

5.7 How the Council intends to minimise or avoid potential adverse effects

5.7.1 Teaching and support staff will work closely with all affected primary schools to ensure that the learning, pastoral and social needs of children are fully supported during any transition process, including enhanced arrangements for children and young people with Additional Support Needs.

5.7.2 An equality impact assessment has been carried out on this proposal and consultation process. This concludes that introducing this proposal will not have an adverse impact on any of the groups considered. From the impact assessment, it is concluded that this proposal would have potential positive benefits for young people. The equality impact assessment is attached as **Appendix B**.

5.8 Summary of benefits resulting from implementation of this proposal

5.8.1 The benefits are all highlighted in the preceding paragraphs, but they can be summarised as follows:

- i. By far the most important driver of the proposal is the prospect that rezoning should ensure, first and foremost, that children who are living within an area zoned for a particular school are able to attend that school.
- ii. There is an opportunity here for the Council to make best use of the finances available, and make the most effective use of resources at a time when the need for these is acute.

5.8.2 The Council has arrived at these conclusions, primarily, from a comprehensive analysis of out-of-zone placing requests within Forres and a detailed study of future housing developments. There has also been consultation with head teachers on the potential impacts of roll forecasts on schools' ability to continue to deliver good quality learning and teaching in suitable learning environments. There has also been a range of informal discussions with authority officers within Education and Social Care, Planning and Transportation which have supported these proposals.

- 5.8.3 In delivering these broad benefits, the authority is confident that it is discharging its duty to secure best value by continuous improvement in the performance of its functions, as required in the Local Government in Scotland Act 2003.

6. **THE CONSULTATION PROCESS**

- 6.1 Formal consultation will run from Monday 22nd August – Friday 30th September 2016 inclusive (30 school days)
- 6.2 As required by the Schools (Consultation) (Scotland) Act 2010, formal consultation includes:
- the preparation of this proposal paper;
 - a letter to the parents/carers of children at all Forres ASG primary schools
 - a letter to the parents/carers of children expected to attend the affected schools within two years of the publication of these proposals, distributed through Forres ASG pre-school centres and child-minders;
 - information, including the proposal paper, placed on the Council's website and publicised through social media;
 - information on the proposals communicated through social media;
 - an announcement of the proposal in the local press, inviting any person to make written representation to the Corporate Director (Education and Social Care);
 - a public meeting as shown below;
 - meetings with the parent councils of all affected Forres ASG primary schools;
 - meetings with the staff of the establishments;
 - consultation with pupils of all affected Forres ASG primary schools;
 - consultation with Community Councils in all affected areas;
 - consultation with representatives of the teacher and support staff trade unions, and
 - meetings with any other interested bodies, if requested.
- 6.3 A Formal Consultation Meeting has been arranged for Tuesday 23rd August 2016 at 7.00 pm in Forres Academy.
- 6.4 It is hoped that the Children and Young Peoples Services Committee will be able to take a final decision on whether or not to implement the proposals at its meeting on 25th January 2017.

7. **INVOLVEMENT OF EDUCATION SCOTLAND**

- 7.1 A copy of this proposal document has been sent to Education Scotland. Education Scotland will also receive a copy of any written representations that are received by Moray Council from any person during the consultation



period. Education Scotland will also receive a summary of any oral representation made to the Moray Council at the public meetings and a copy of any other relevant documentation.

- 7.2 After the Moray Council has sent Education Scotland all representations and documents mentioned above, Education Scotland will prepare a report on the educational aspects of the proposal. This will take place during the period 31st October – 18th November 2016. In preparing their report, Education Scotland may visit the affected establishments and make such reasonable enquiries of such people there, or such other people as they consider appropriate.
- 7.3 On receipt of the Education Scotland report, it will be necessary to review the proposal, and thereafter, the Corporate Director (Education and Social Care), on behalf of the education authority, will prepare and publish a consultation report, containing the views of Education Scotland and including an explanation of how the Moray Council proposes to deal with any issues raised. After a period of no less than three weeks, the Children and Young Peoples Services Committee will consider the consultation report and decide whether or not to implement the proposals.

8. NOTE ON CORRECTIONS

- 8.1 If any apparent inaccuracy or omission is discovered in this proposal document either by the Moray Council or any person, the Moray Council will determine if relevant information has been omitted or if there has been an inaccuracy. If it is determined that there has been an inaccuracy or omission the Moray Council will then take appropriate action which may include the issue of a correction or the reissuing of the proposal paper or the revision of the timescale for the consultation period as appropriate. In that event, any person highlighting the inaccuracy to the Moray Council, relevant consultees and Education Scotland will be advised.

9. EQUALITY STATEMENT

- 9.1 An equality impact assessment has been carried out on this proposal and consultation process to assess the proposal's relevance to the public sector equality duties on the basis of:

- Sex
- Religion
- Racial group
- Disability
- Sexual orientation
- Gender reassignment
- Pregnancy and maternity

- 9.2 The equality impact assessment concluded that introducing this proposal will not have an adverse impact on any of the groups listed. From the impact assessment, it is further concluded that the proposals could have potential positive benefits for young people. Any impacts identified through the consultation process will be investigated prior to the final consultation report being issued and a decision being made. The equality impact assessment is attached as **Appendix B**.

10. **SUBMISSION OF VIEWS**

- 10.1 Responses to the consultation should be made by writing to:

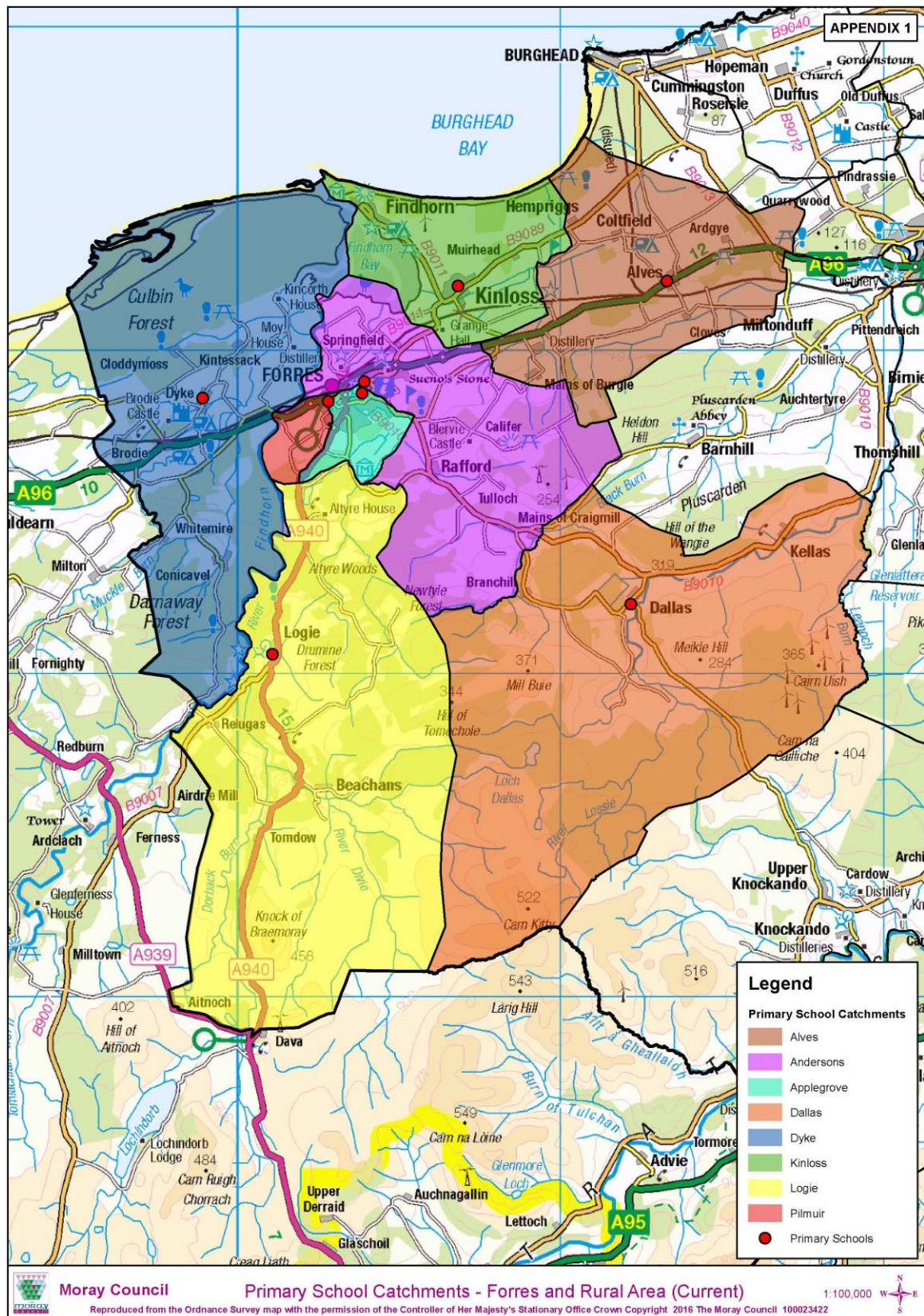
Forres Primary School Rezoning Consultation
The Moray Council
Community Support Unit
High Street
Elgin
IV30 1BX

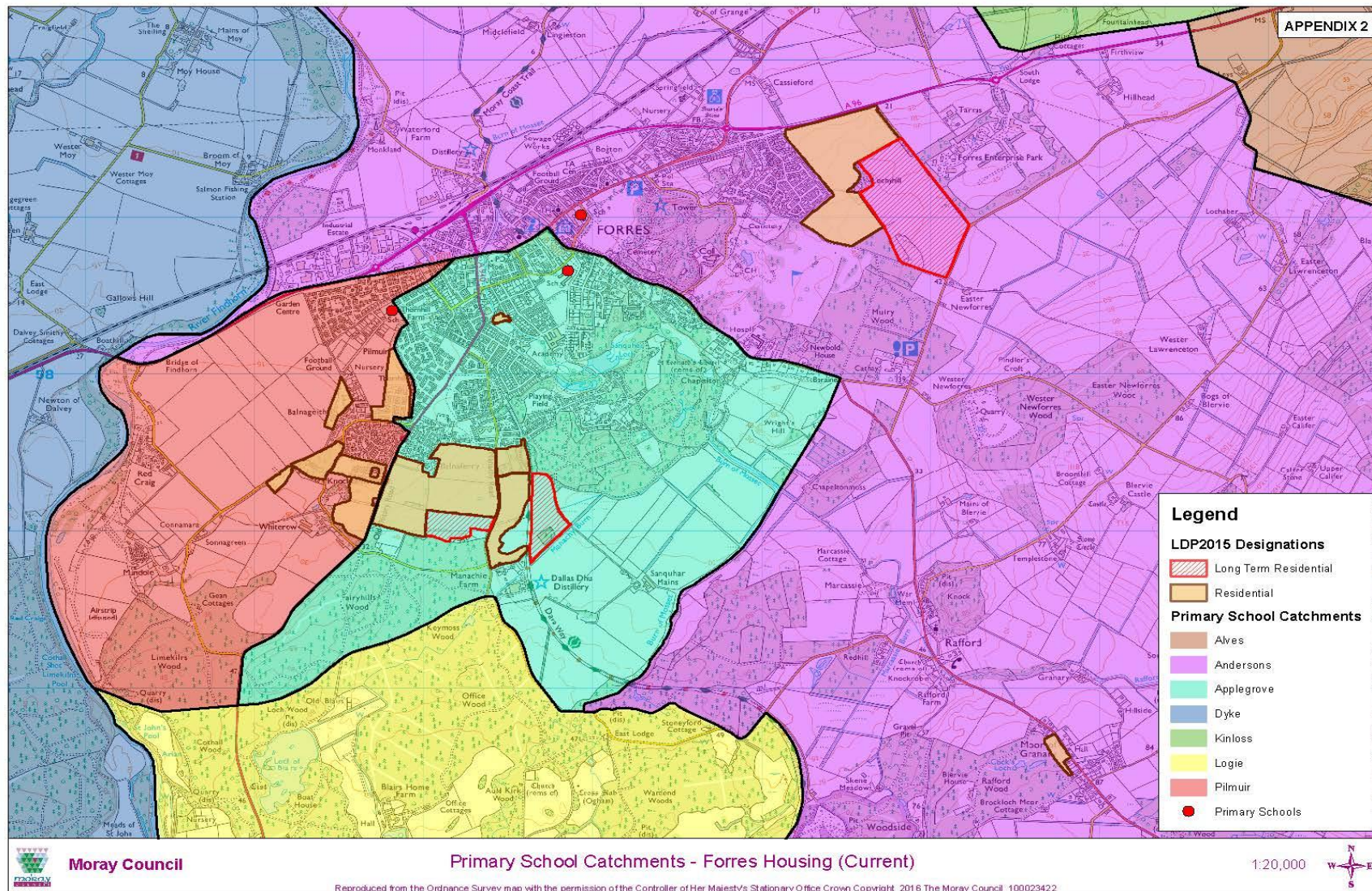
or by e-mail to: futureschools@moray.gov.uk
or by completing the attached consultation response form
or by completing the on-line consultation form by following the links at www.moray.gov.uk

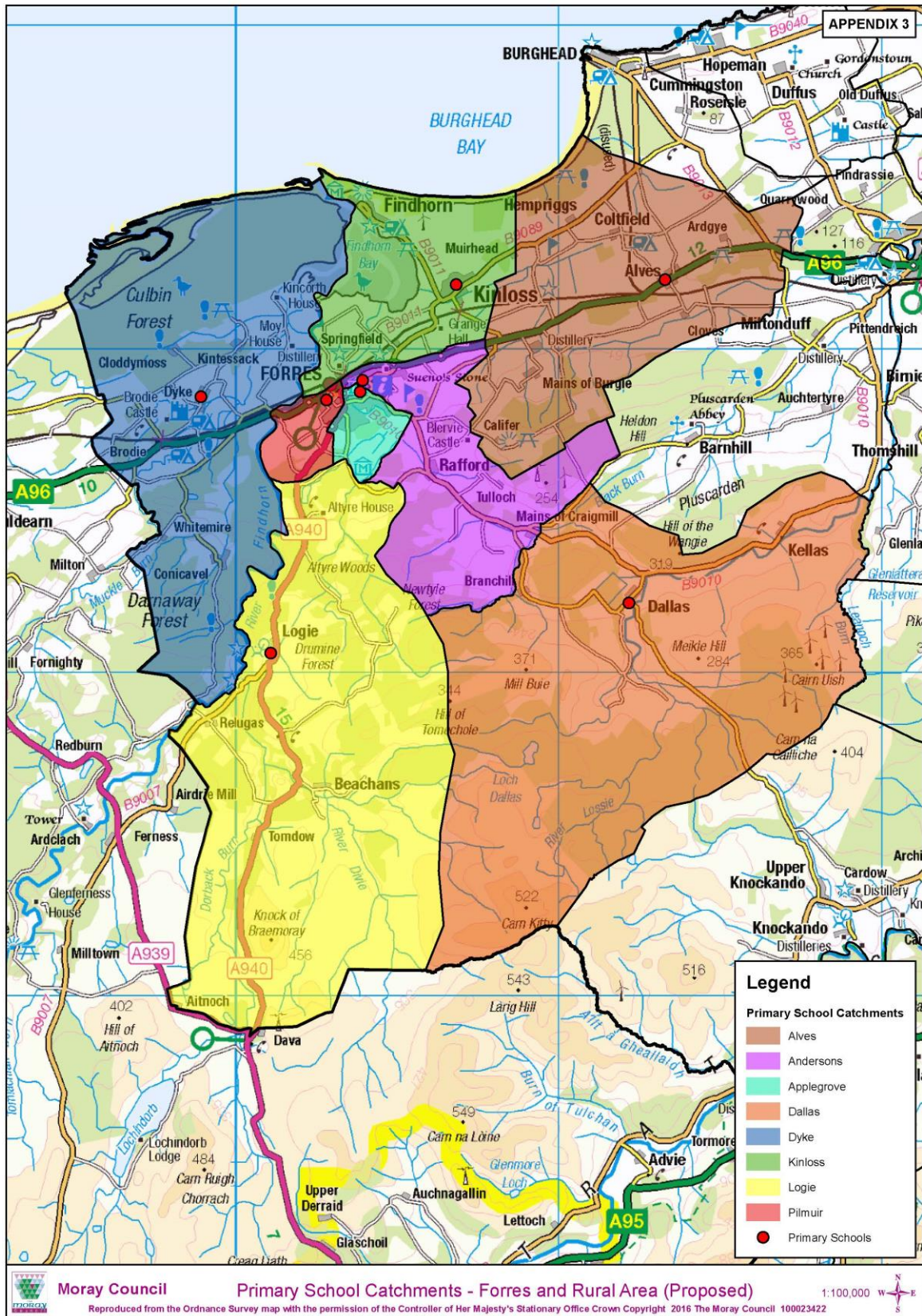
All responses must be submitted by 5.00pm on 30th September 2016 for them to be taken into account as part of the consultation.

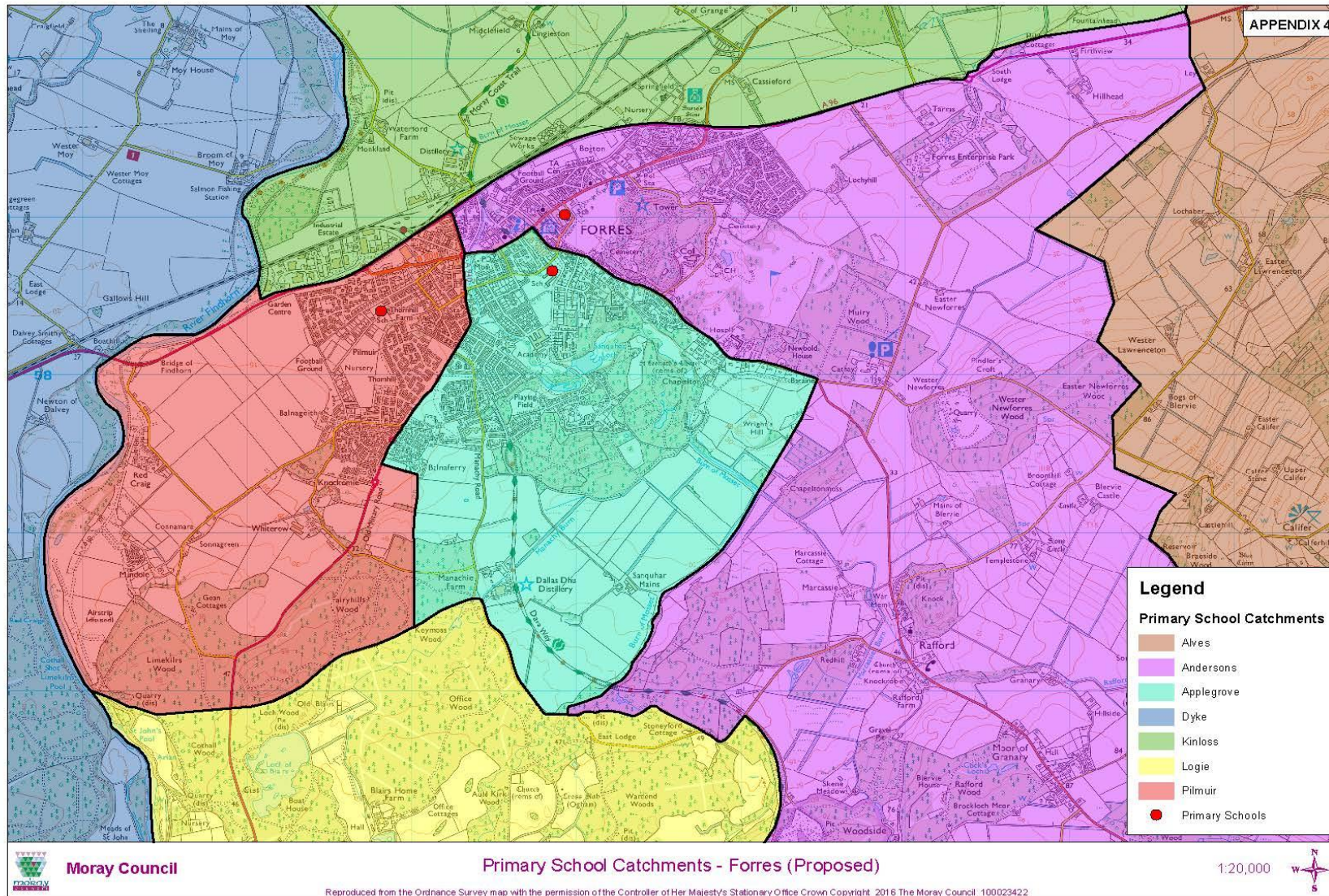
11. **OUTCOME OF CONSULTATION**

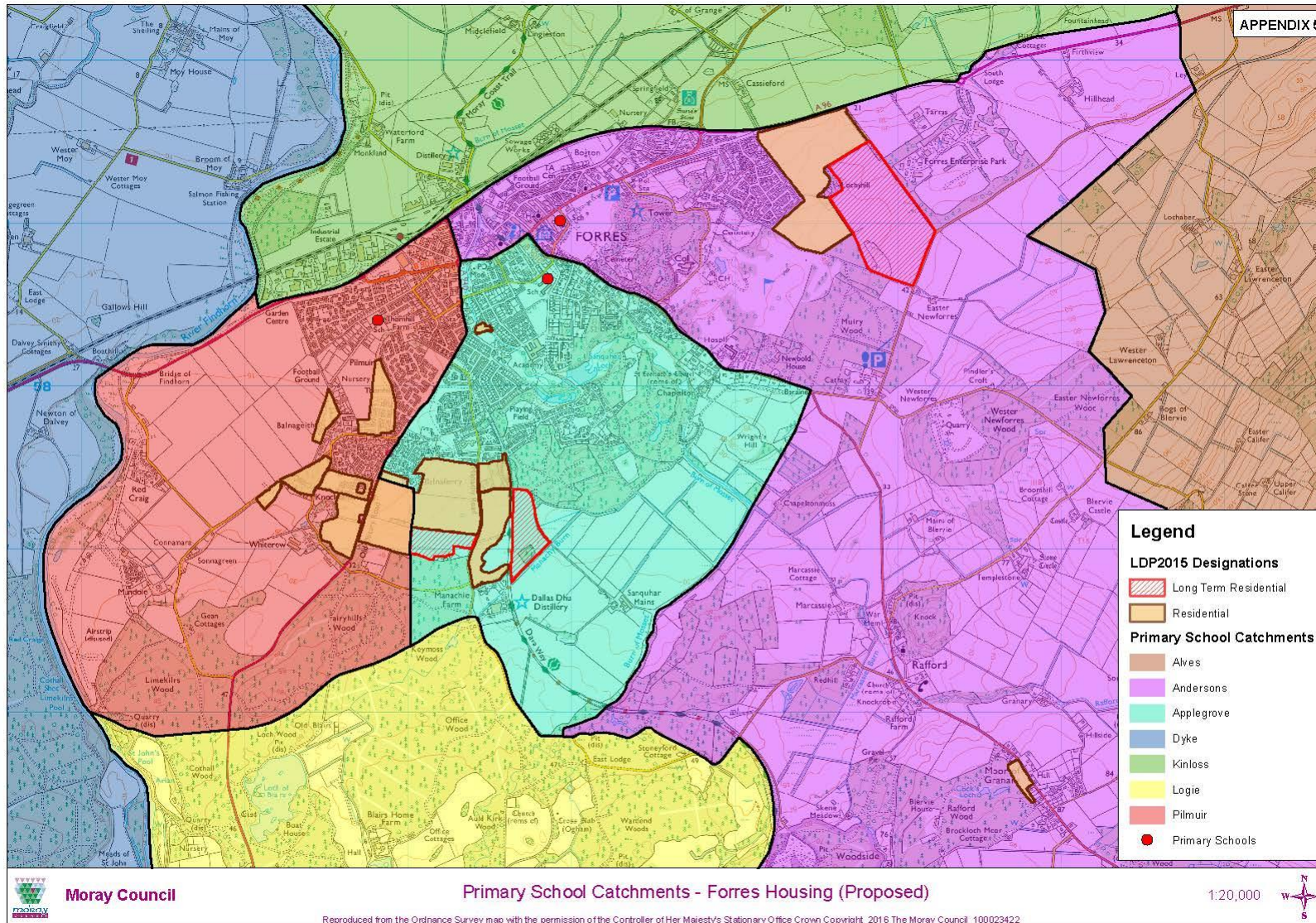
- 11.1 A consultation report, including a summary of the submissions, will be published on the council website. This will be available by following the links at: www.moray.gov.uk
- 11.2 It is intended that a report on the consultation will be presented to the Children and Young People's Services Committee on 25th January 2017. This will provide information for Elected Members to make a final decision on implementation of the proposal.











Appendix C: EDUCATION SCOTLAND REPORT

Report by Education Scotland addressing educational aspects of the proposal by The Moray Council to vary the catchment areas of Alves, Anderson's, Applegrove, Kinloss and Pilmuir Primary Schools.

1. Introduction

This report from Education Scotland has been prepared by HM Inspectors in accordance with the terms of the *Schools (Consultation) (Scotland) Act 2010* and the amendments contained in the *Children and Young People (Scotland) Act 2014*. The purpose of the report is to provide an independent and impartial consideration of The Moray Council's proposal to vary the catchment areas of Alves, Anderson's, Applegrove, Kinloss and Pilmuir Primary Schools. Section 2 of the report sets out brief details of the consultation process. Section 3 of the report sets out HM Inspectors' consideration of the educational aspects of the proposal, including significant views expressed by consultees. Section 4 summarises HM Inspectors' overall view of the proposal. Upon receipt of this report, the Act requires the council to consider it and then prepare its final consultation report. The council's final consultation report should include a copy of this report and must contain an explanation of how, in finalising the proposal, it has reviewed the initial proposal, including a summary of points raised during the consultation process and the council's response to them. The council has to publish its final consultation report three weeks before it takes its final decision. Where a council is proposing to close a school, it needs to follow all legislative obligations set out in the 2010 Act, including notifying Ministers within six working days of making its final decision and explaining to consultees the opportunity they have to make representations to Ministers.

1.1 HM Inspectors considered:

- the likely effects of the proposal for children and young people of the schools; any other users; children likely to become pupils within two years of the date of publication of the proposal paper; and other children and young people in the council area;
- any other likely effects of the proposal;
- how the council intends to minimise or avoid any adverse effects that may arise from the proposal; and
- the educational benefits the council believes will result from implementation of the proposal, and the council's reasons for coming to these beliefs.



1.2 In preparing this report, HM Inspectors undertook the following activities:

- attendance at the public meeting held on 23 August 2016 in connection with the council's proposals;
- consideration of all relevant documentation provided by the council in relation to the proposal, specifically the educational benefits statement and related consultation documents, written and oral submissions from parents and others; and
- visits to the site of Alves, Anderson's, Applegrove, Kinloss and Pilmuir Primary Schools, including discussion with relevant consultees.

2. Consultation Process

2.1 The Moray Council undertook the consultation on its proposal(s) with reference to the *Schools (Consultation) (Scotland) Act 2010* and the amendments in the *Children and Young People (Scotland) Act 2014*.

2.2 The consultation period ran from 22 August to 30 September 2016. A public meeting was held on 23 August 2016 and was attended by six members of the public. No particular issues arose nor was there opposition to the proposal at this meeting. The consultation paper was widely publicised on the council's website and within the individual schools. Headteachers from each of the five schools discussed the proposal with their Parent Councils, children and staff as appropriate. A council survey resulted in 14 responses from members of the public. A few of those who opposed the proposal gave reasons which related to their own particular situation including travelling distances. A few also gave reasons not directly linked with this proposal.

3. Educational Aspects of Proposal

3.1 Should the proposal go ahead, HM Inspectors agree that families who live in the affected areas will be provided with clear information on their zoned primary school. The individual school roll forecasts outlined within the proposal paper indicate clearly that revised catchment areas should lead to a better balance of school rolls across the primary schools in the Forres Associated School Group. This has the potential to ensure a sufficiency of school places within the individual communities. For some schools, the proposal has the potential to create a more sustainable school roll for the future. In other schools, it will help to avoid potential overcrowding. The proposal also aims to retain and enhance flexible learning spaces such as libraries, art and music rooms within the schools.

3.2 Overall, the council received a small number of responses to the proposal. The majority of families who responded to the survey were in favour of the proposal and almost all who spoke with HM Inspectors are in favour. They agree with rationale behind the proposal and feel that it will give them clear information about the zoning for primary schools in the Forres Associated School Group. All



families agree with The Moray Council regarding the need to ensure a sufficiency of school places and that these are balanced more effectively across the schools within the functional capacity of each school. Families also felt the proposal would not impact on parental choice across the five schools where places were available. Staff from the five schools who spoke with HM Inspectors are in favour of the proposal and agree with the educational benefits that would arise.

3.3 Children who spoke with HM Inspectors agree with the proposal. They feel the council's aim of ensuring a sufficiency of school places at their local school is fair. They agree that there is the potential to create a more sustainable school roll in the smaller schools. Children benefit from flexible learning spaces in each of their schools and they are pleased the proposal sets out to retain or enhance these areas.

4. Summary

The Moray Council has set out a clear rationale for the proposal and has consulted stakeholders well. They rightly make clear the need to ensure a sufficiency of school places across the five communities. The council is taking positive steps to create a more sustainable school roll within the smaller school communities. The proposal sets out to retain and enhance flexible learning spaces in each of the schools. Proportionally, the council received few responses to the survey. It has, however, listened to the views of families regarding the proposal and given reassurance where required.

**HM Inspectors
Education
Scotland
November 2016**

Appendix D: SUMMARY OF PUBLIC MEETINGS AND WRITTEN RESPONSES



Moray Council

Rezoning Forres ASG Primary Schools Consultation

Public Meetings

**22 August 2016
30 September 2016**



Forres Academy Public Meeting (22.08.2016)

In attendance:

Graham Jarvis (Head of Lifelong Learning, Culture & Sport)
Paul Watson (Senior Education Adviser for Schools Consultations)
Alison McLaughlin (Admin Assistant, Chief Executive's Office)

Lesley Meehan (Head Teacher: Applegrove Primary School)
David Gregory (Education Scotland)

Elected Members In Attendance:

Cllr George Alexander (Independent)

Number of Community Representatives in Attendance:

3

Graham Jarvis welcomed all attendees to the meeting and provided an introduction to the Rezoning Forres ASG Primary Schools consultation. Paul Watson carried out a presentation on the proposal. A question and answer session followed the presentation.

Questions & Answer Session

Q	No existing pupil will be expected to move school once the catchments are amended?
A	No pupil currently in school will be asked to change schools. If future siblings wish to attend the same school which is now out of zone; a placing request will have to be submitted. (PW)
Q	If and when the proposals are implemented will pupils continue to receive free transport?
A	Transport will continue for children currently in school. There may be a possibility of privileged transport for siblings; however there will have to be a cut-off deadline, for example when the older sibling leaves or the transport arrangements are amended. (GJ)
Q	Will this not increase transport costs?
A	Possibly in the short term. (GJ)
Q	Could you transport from the edge of Forres primary school to Kinloss primary school?
A	If children live over two miles from their zoned school, transport will be provided. If there is no safe route to walk to their zoned school, transport will be provided. (GJ)
Q	What happens if the Kinloss Barracks closes, what will be the impact to your proposed roll forecasts? Will these proposals if implemented have to be reversed?



A	<p>The roll forecasts are based on current information; this includes the housing developments that have been identified. (PW)</p> <p>If Kinloss Barracks was to close a review of the roll forecasts would have to take place. (GJ)</p>
Q	You mentioned the safe route to schools but does the development at east of the Grantown Road not break this rule?
A	There is a safe road crossing in that area, however if the result from this consultation is that residents would prefer to remain zoned to the Applegrove primary school catchment, that will be considered. (PW)
Q	What is the timescale for the east side of Forres development?
A	We estimate 20 houses per year starting 2018; this will depend on the building rate. If the building rate is slow there will be no impact. (PW)
Q	Do you receive reasons for placing requests?
A	<p>We do not request a reason for placing request submissions. People are entitled to choose which school their child attends and we are legally obligated to say yes unless there are capacity issues at the chosen school. (GJ)</p> <p>The main reasons we have found for placing requests are due to house moves, childminding/nursery or work commitments. (GJ)</p>
Q	Would it not be helpful to know the reasons?
A	We look at the number of placing requests over a three year period to estimate the school roll. Dis-satisfaction is not a major reason for placing request submissions. (PW)
Q	Should you not put this consultation on hold until the decision is made for Kinloss Barracks?
A	No. We do not know when a decision will be made or what that decision will be. (GJ)
Q	How is the change going to help relieve the pressure of Kinloss primary school numbers?
A	Some new housing developments would be zoned to Alves rather than Kinloss
Q	If a family have children currently zoned to Andreson's primary school and a further child is zoned to Kinloss primary school; does this not increase the pressure at Kinloss primary school? Would it not be best to zone this area to Andreson's primary school?
A	<p>That is something to consider. (PW)</p> <p>Planning is agreed but these will only be built if there is the demand from buyers. We have to go by what is agreed via planning permissions; this is why our numbers are forecasted. (GJ)</p>
Q	The Moray Council has no money; would the new house development help increase Pilmuir primary school roll?
A	<p>We do have money committed to the school estate with a deadline for completion of 2020. (GJ)</p> <p>We review our roll figures each year to ensure we have accurate information and will be starting to review these figures twice a year. (PW)</p> <p>New housing developments could help increase the Pilmuir roll.</p>



	Elected members may decide to place these proposals on hold or only implement part of the proposal based on the results from this consultation. What we cannot do is implement any changes which have not been consulted on during the allocated period. (PW)
Q	Why make these changes if there is no cost advantage to the Council.
A	This consultation is not a cost saving exercise. This is a cost neutral exercise as we still working with the same amount of children.
Q	Why would we move to Alves primary school which is further away than Anderson's primary school?
A	That is a valid point and will be considered. (PW)

Paul Watson concluded the meeting by thanking those in attendance for coming along and participating.



Applegrove Parent Council Meeting (29.08.2016)

In attendance:

Paul Watson (Senior Education Adviser for Schools Consultations)
Alison McLaughlin (Admin Assistant, Chief Executive's Office)

Lesley Meehan (Head Teacher: Applegrove Primary School)

Number of Parent Council Representatives in Attendance:

6

Paul Watson welcomed all attendees to the meeting and provided an introduction and presentation on the Rezoning Forres ASG Primary Schools consultation.

Questions & Answer Session

Q	What happens to siblings after the zones are changed?
A	A placing request can be submitted. These children are given priority as explained in our Admissions Policy.
Q	Will the placing requests be capped?
A	We are not at that stage in Forres.
Q	How will you manage capacity and classroom sizes if the school roll is to increase?
A	There should be no pressure on the capacity of each school due to this rezoning. (PW) Head teachers review the school roll for each year and identify classroom sizes and set up using the most up to date school roll each year. (LM)
Q	If Kinloss Barracks close will school close?
A	The possible closure of the Barracks will have an impact on the school roll; however the future housing development site will also impact on the school roll.
Q	What about those schools that are currently showing as under capacity?
A	When we reviewed Dallas, Dkye and Logie we identified there was nothing we could do to realistically increase the school roll via the rezoning of catchment areas.

Paul Watson concluded the meeting by thanking those in attendance for coming along and participating.



Moray Council

Rezoning Forres ASG Primary School Consultation

Comments / Enquiries Received

**22 August 2016
30 September 2016**



Please note that content within is unedited (except for the removal of personal data)



Correspondence

Subject: Changes to zones for Alves Primary

Received: 20 September 2016

Subject: Changes to zones for Alves primary *

I'm writing with regard to the proposed changes to school zoning for Alves. My three children are currently at Alves primary and we live in Alves but we are building a new house near Califer. The map on the council website seems to show the boundary line going right through out plot. I'm very concerned that we are going to be just out of the zone which will affect us hugely as we wont get transport for the kids if this is the case. I wonder if there is a fine detailed map showing the exact placement of the line?

* It was confirmed that the site in question would lie with the proposed Alves catchment area



12 Sept 2016

Your Ref: Rezoning Forres ASG Primary Schools

Dear Sir/ Madam,

I note from your recently issued consultation paper the Moray Council propose to vary the zones (catchment areas) of Alves, Anderson's, Applegrove, Kinloss and Pilmuir Primary Schools based on geographical areas.

We live in an area, shown bounded in red on the attached map that is to the north of the A96, to the west of the Mosset Burn and to the east of the River Findhorn. This area currently falls within the catchment for Anderson's Primary but it is proposed that it be rezoned to the Kinloss Primary catchment.

Although we fully appreciate the desire to evenly balance school pupil numbers we do not believe this change is necessary, and also believe it will be detrimental to the children from this area by restricting opportunities available to them.

Noted below are the points we would ask be considered before a final decision on catchment changes is reached.

1. The area in question contains 22No houses. From information provided at the public consultation in Forres Academy, this equates to 7No children of primary school age. Currently children from 9No of these houses, 3No children, are able to walk or cycle to Andersons Primary safely as they are within 2 miles of the school and the houses have a footpath that extends from house to school. If the area was rezoned to Kinloss Primary none of the children from the 22No houses would be able to walk or cycle to school safely. As I'm sure you know the objective of Active Schools in Moray is to get 'more children, more active, more often'. Removing the option of walking or cycling to school safely would seem at odds with this objective.
2. The 75% increase in transport costs, as 7No children require transport instead of 4No, would put an even greater strain on the Moray Council budgets.
3. At present children can take part in after school activities in Forres and then walk or cycle home after they are finished. If the children have to take school transport to Kinloss they will need to leave when the transport is provided, at the end of the school day, and therefore miss the opportunity to take part in these activities. Again this is contrary to the aims of Active Schools.



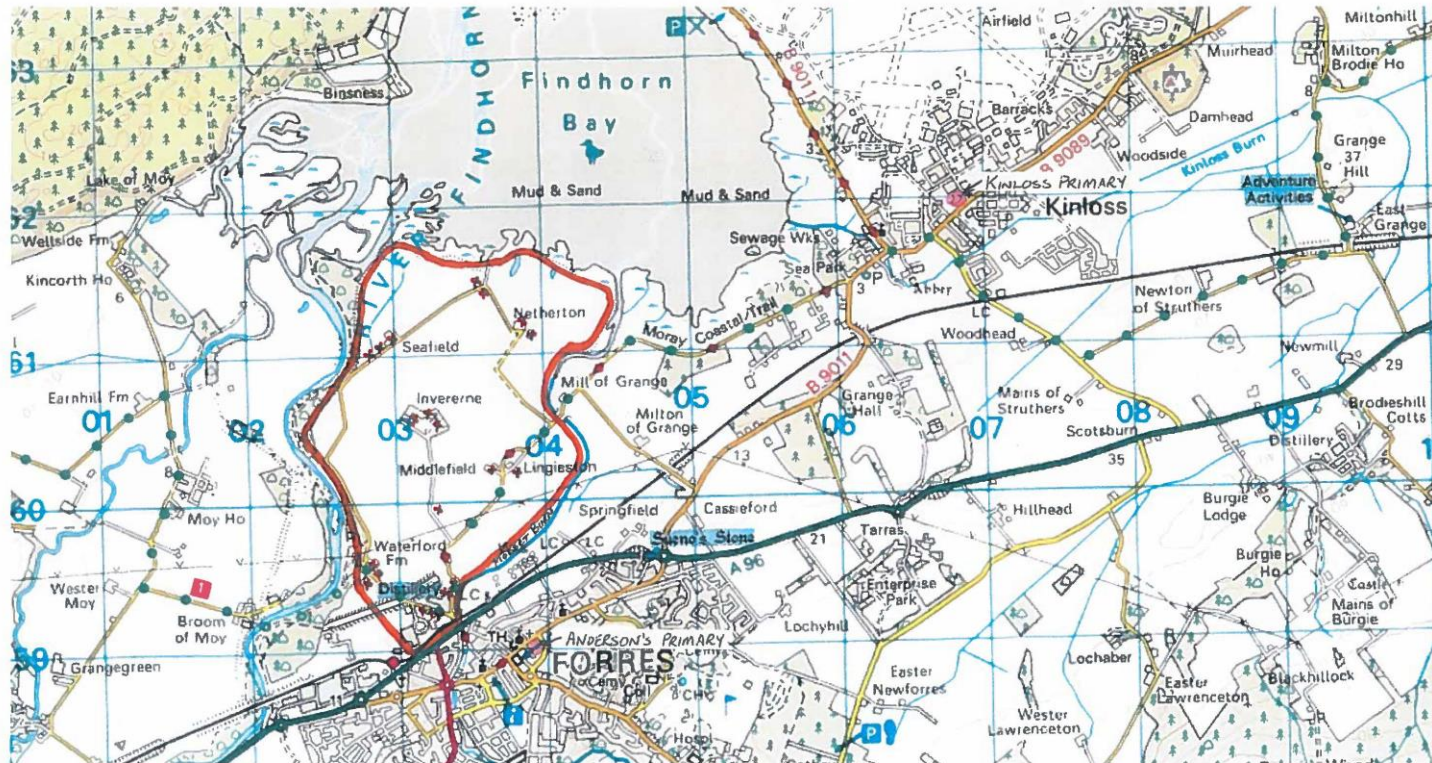
– 2 –

4. As Kinloss is a smaller school, and Kinloss is a smaller town than Forres, there are fewer after school activities available. Therefore, even if a child's parent could arrange some alternative pick up arrangement, there are fewer activities available for the child to take part in. Again this is contrary to the aims of Active Schools.

If you wish to discuss any of these points further please do not hesitate to get in touch.

Yours sincerely, 







Social Media

No correspondence received

Survey Monkey Comments

- Why not take this opportunity to reduce the number of schools. I'm sure Forres could cope with one less primary.
- Looking at the current and future numbers of Dallas, Logie and Alves I can't see how it cost effective to keep these 3 schools open. Dallas could go to Andersons or Elgin. Logie to Pilmuir or Applegrove, and Alves to split between Kinloss and Elgin. I think the council need to take the decision, I know parents will object but it not cost effective or best interest of the council which is already stretched and strapped for cash. Yes people won't move into these areas to put child to the local county school, but it not the councils responsibility to keep the community alive at the cost of thousands a year.
- Rezoning could secure a steady roll, which would mean that a better management structure in the school would exist. The school has a mixed catchment area with a number of families with complex needs; this impacts on the duties of the HT and it can be time consuming but clearly essential work.
- Concerned that current huts are old and are in a poor state; removed would affect our capacity.
- Primary 7 pupils thought this was a good idea. Chance to meet more pupils/make more friends. More people involved with school (to help). May need walls in the open plan bit to make it quieter if a lot more pupils or bigger classes. May mean composites. More money for resources. Staffing - more for outside. Janitor more to tidy. May need a bigger hall. HT might get help of PHT (like in my old school) to help keep everyone happy and doing what they have to do.
- Staff all agree it could benefit the school. Securing a steady roll may enable the school to have a DHT and principal teacher. Many feel parents will make their own choices along traditional lines. Concerns about accommodation - esp Huts which are getting to the end of their life. Concerns that if roll increases could be much more crowded and difficult in open plan areas. When classes were much bigger it was more challenging. One class area would be difficult to teach in as it is a route through to Hall and Library. Currently used by ASN teacher for small groups / computers. Discussion was held at a meeting and in conversation main issues about need to invest in infrastructure.
- All those present agreed for the following reasons and raised aspects which they though needs consideration. Rezoning will potentially secure the future of the school. Roll due to drop from 2020 so this may keep it steady, which could secure a more robust management structure. Overall a good thing and agree -



but concerns that class sizes will increase and suitability of accommodation needs

- It was felt the building needs to be fit for a 21 century school - may need spending on buildings especially Huts which P6 and P7 are taught in. Families still have a choice and may not choose Pilmuir.



Stakeholder Responses

The Moray Council Planning and Development department

I support the principles behind the proposals, however would suggest the following two amendments;

- That the employment land sites identified within the Moray Local Development Plan 2015 at I1 to I8 be included within the Forres primary school catchment areas.
- That the area to the east of Forres, north of the A96 (Cassieford), running to the east as far as the roundabout at the Enterprise Park, Forres be included within the Forres primary school catchment areas. This is likely to be the much longer term growth area for Forres and may be a good location for a new primary school, subject to capacity in existing primaries.

The current review of the Defence Estate may have an impact upon the school rolls within Kinloss and Forres and it may be prudent to plan for a further catchment review in the medium term.

Pilmuir Primary School

Pilmuir primary school head teacher undertook consultation meetings with the following stakeholders:

- Primary 7 pupils
- Staff
- Friends of Pilmuir / Parent Council

All Pilmuir primary school stakeholders were happy with the proposals that affected their school. Comments / suggestions were submitted via the online survey.

Alves Primary School

Alves primary school head teacher undertook consultation meetings with the following stakeholders:

- Parent Council 15.09.16
- Staff 14.09.16
- Support Staff 29.09.16
- Primary 5/6/7 pupils 29.09.16

Extract from Parent Council minute:

JMcL advised that comments regarding the rezoning consultation document had to be returned to Scottish Government by 30.09.16. JMcL explained the current issues



regarding boundaries and zoning and that there were 2 consultations regarding this including a consultation on Forres ASG boundaries and a consultation on Secondary School zoning changes. JMcl advised the group that we could respond as individual parents or as a group from the APPC. It was agreed by the group that it made sense for Alves School to change the catchment area. Agreed jointly to say yes to the changes proposed for Alves, Kinloss and Andersons. A joint response was completed during the meeting and given to JMcl for submission. JMcl reported Alves currently have 49 pupils from within their zone and 13 pupils (26.9%) from out of zone. JMcl has brought this to the attention of P5, 6 and 7s, teacher helpers. DJ to put on Facebook and link to Moray Council website re consultation process.

Extract from Staff meeting minutes:

Rezoning consultations – HT went over the ASG catchments and the proposed rezoning. Staff agreed to submit a group feedback. Teachers attending – 5.
Support Staff – Agreed to submit a group response. Support Staff attending – 4.

Pupils consultation:

Summary of issues – The rezoning of the catchment areas was discussed with 21 pupils from the Primary 5/6/7 class. The pupils were excited about the prospect of the catchment area increasing to bring more pupils to the school. The concerns / questions the pupils were asking revolved around transportation and if it changed any area of the current catchment area. The response was that the catchment area would increase and not affect any pupils in the current catchment area. Some of the pupils living just outside the catchment area in both proposed sections would be entitled to the bus. The Public Transport Unit will sort out bus arrangements. Pupils were happy with the response and agreed to complete a group response.

- I Agree with the proposals to vary the catchment area of Alves Primary School as detailed: 37 responses
- I Agree with the proposals to vary the catchment area of Andersons Primary School as detailed: 37 responses
- I Agree with the proposals to vary the catchment area of Applegrove Primary School as detailed: 30 responses
- I Agree with the proposals to vary the catchment area of Kinloss Primary School as detailed: 37 responses
- I Agree with the proposals to vary the catchment area of Pilmuir Primary School as detailed: 30 responses



Anderson's Primary School

Anderson's primary school head teacher undertook consultation meetings with the following stakeholders:

- Pupils 22.09.16
- Staff 07.09.16

Pupil consultation responses:

Pupil Council consultation with classes – questions answered – no objections raised.

- Less people might come to Andersons and the school might close down.
- Not being able to start school with older siblings.
- There are less pupils than before.
- Not enough P1s might not come in the future.

Extract from Staff meeting minutes:

Staff were asked if they wished to add anything to the consultation regarding the proposals for rezoning schools within the Forres ASG.

Parent Council

The Parent Council responded via the online survey.

Applegrove Primary School

Applegrove primary school head teacher undertook consultation meetings with the following stakeholders:

- Pupils
- Staff

54 children were asked. These ranged in age from P4 to P7 including reps from committees (School Council, JRSO, Health and Eco) as it was felt there were elements of rezoning which would affect them all.

Of the 54 children, 36 agreed with the rezoning and 18 disagreed. Some needed reassurance they would not have to move to another school.

The head teacher held two consultations with staff on Friday 16th September. Twelve support staff (PSAs, Classroom Assistants and the janitor) attended the first. Their general view was that if parents could still make parental requests the zoning didn't matter. There was also a feeling that Applegrove's Enhanced Provision would negate the zoning lines anyway. They did not feel it would affect their jobs in any way.

The head teacher held the teachers' consultation later in the day, giving them time out of class. The same comments tended to come up. One teacher believed Anderson's should be made P1 – 3 and Applegrove P4 – 7 or vice versa.



No one asked any further questions. This tended to raise more about the fact the majority (of staff) believe Logie should be closed than any issue over rezoning Forres.

Parent Council meeting held 29.08.16

Notes can be found via the Public Meeting report (ref 230-16813).

Kinloss Primary School

Kinloss primary school head teacher undertook consultation meetings with the following stakeholders:

- Pupils 25.08.16
- Staff 29.08.16
- Parent Council 29.08.16

There were no concerns or comments raised.