

# SCHOOL CATCHMENT AREA AMENDMENTS PROPOSALS

GRAHAM JARVIS

(Head of Lifelong Learning,  
Culture & Sport)

PAUL WATSON

(Senior Education Adviser)

# The Proposals

- To vary the catchment areas of Bishopmill, Lhanbryde, Linkwood, Seafield and West End Primary Schools, Elgin Academy, Elgin High School and Milne's High School.
- Intended implementation dates:
  - **14th August 2017** for the revised Bishopmill, Lhanbryde, Linkwood, Seafield and West End Primary Schools' zones
  - The start of the school session in the August following the opening of Linkwood Primary School on its permanent site for the Elgin Academy/Elgin High School and Elgin High/Milne's High catchment area amendments.

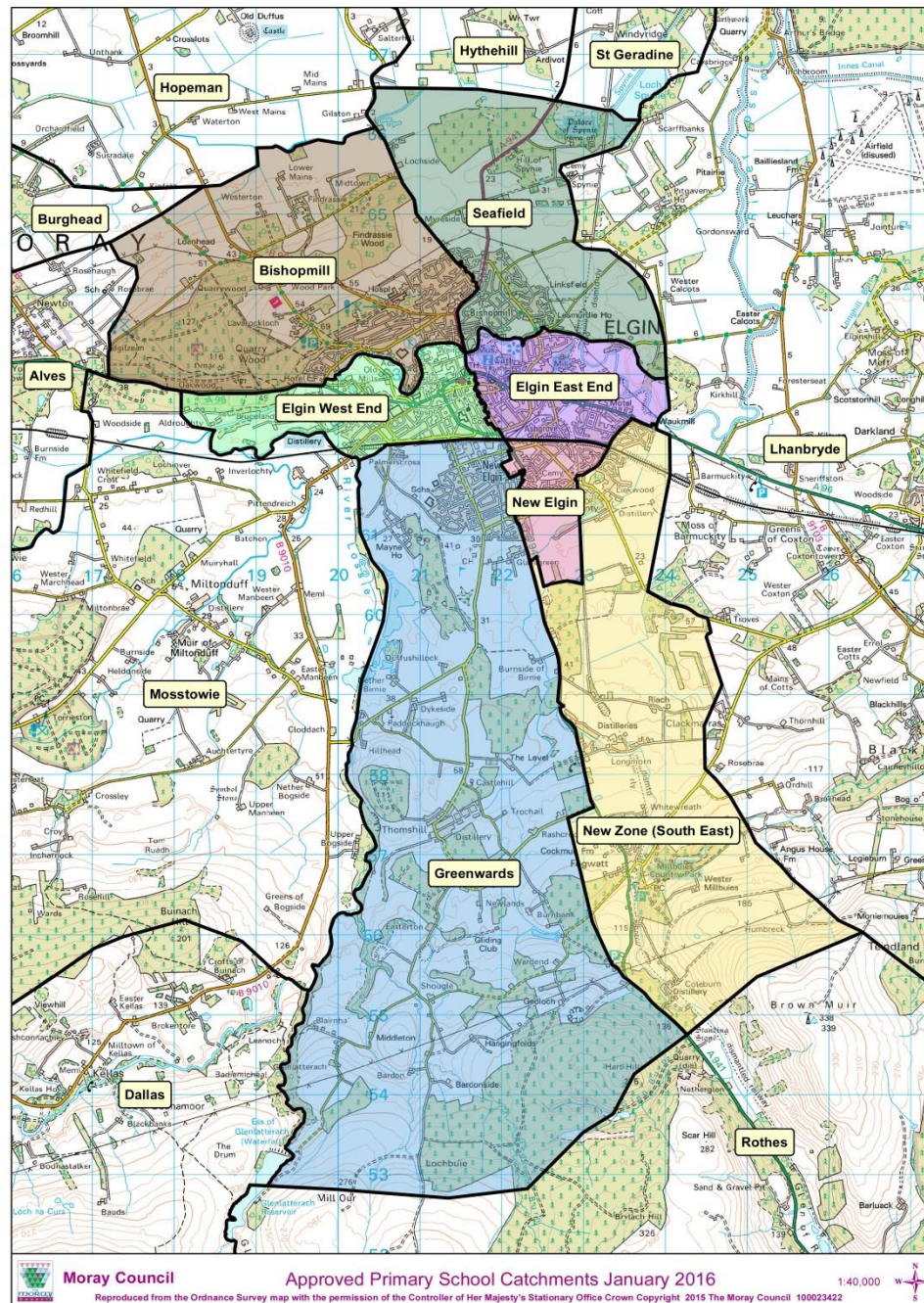
# Background

The Moray Council approved revised zones for Elgin primary schools on 11 November 2015 and revised secondary school zones were approved by on 22 June 2016.

A few issues arose either during, or after, these consultations which should be now be addressed and would effectively 'tidy up' the school catchment areas within, and bordering, Elgin.



# Current Catchment Areas



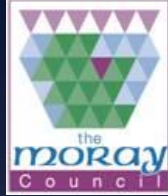
**Moray Council**

**Approved Primary School Catchments January 2016**

1:40,000



Reproduced from the Ordnance Survey map with the permission of the Controller of Her Majesty's Stationary Office Crown Copyright. 2015 The Moray Council 100023422

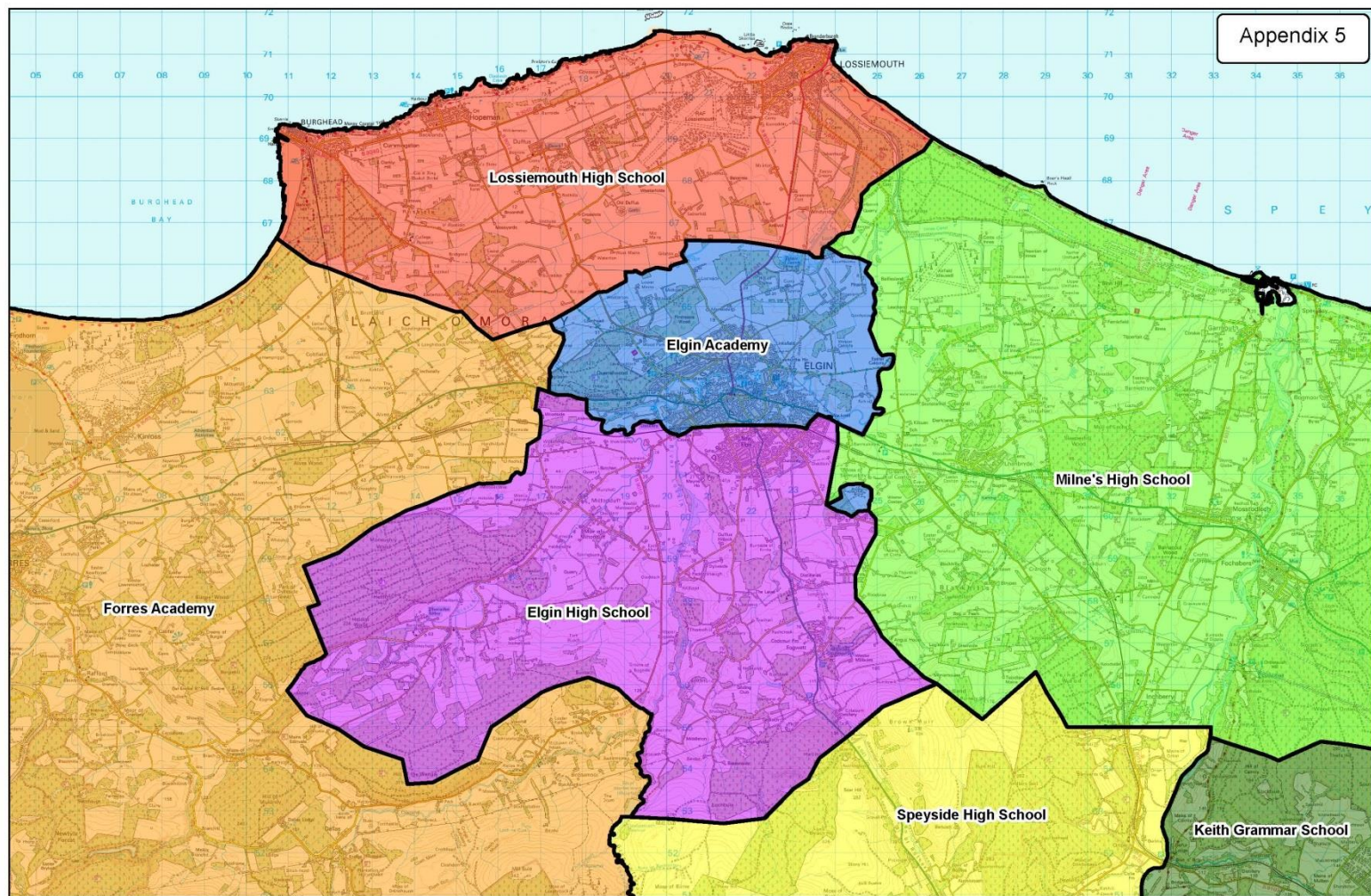


# Education and Social Care

*Ambitious to Achieve Excellence Together*



# Current Catchment Areas



Appendix 5



Moray Council

Revised Catchment Areas for Implementation

1:80,000



Reproduced from the Ordnance Survey map with the permission of the Controller of Her Majesty's Stationary Office Crown Copyright 2015 The Moray Council 100023422

**Education and Social Care**  
Ambitious to Achieve Excellence Together

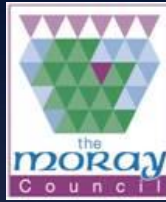
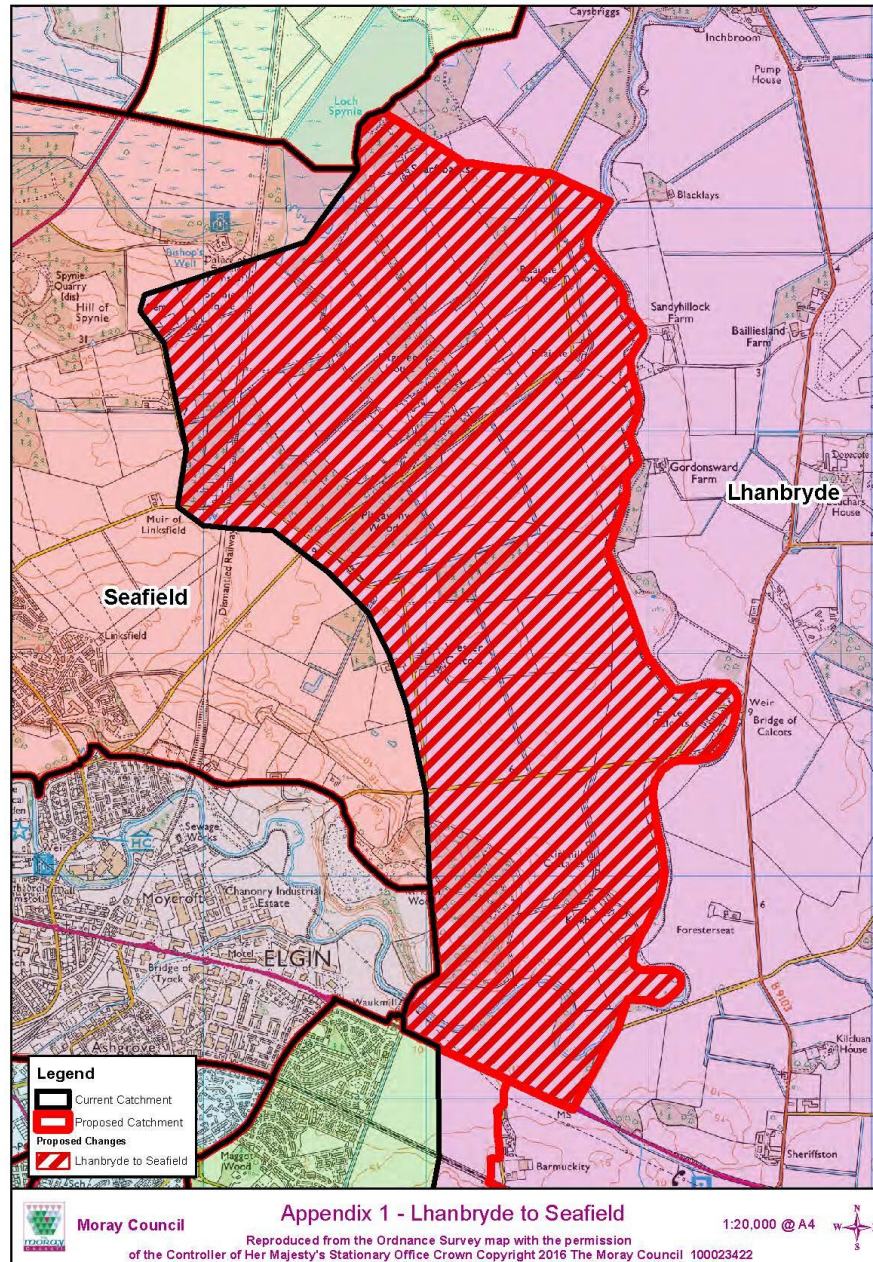
# Proposed Catchment Area Changes

It is proposed to rezone:

- the geographical area which lies to the north of the A96 and to the west of the river Lossie from Lhanbryde Primary School to Seafeld Primary School.
- a small geographical area within post code IV30 6UH (Sheriffmill Road) from West End Primary to Bishopmill Primary.
- part of Lhanbryde catchment area including the Hallowood Road, Troves area to Linkwood Primary.
- all of the revised Linkwood Primary School catchment area from Elgin Academy and Milne's High school to Elgin High School.



# Proposed Catchment Areas Lhanbryde → Seafield

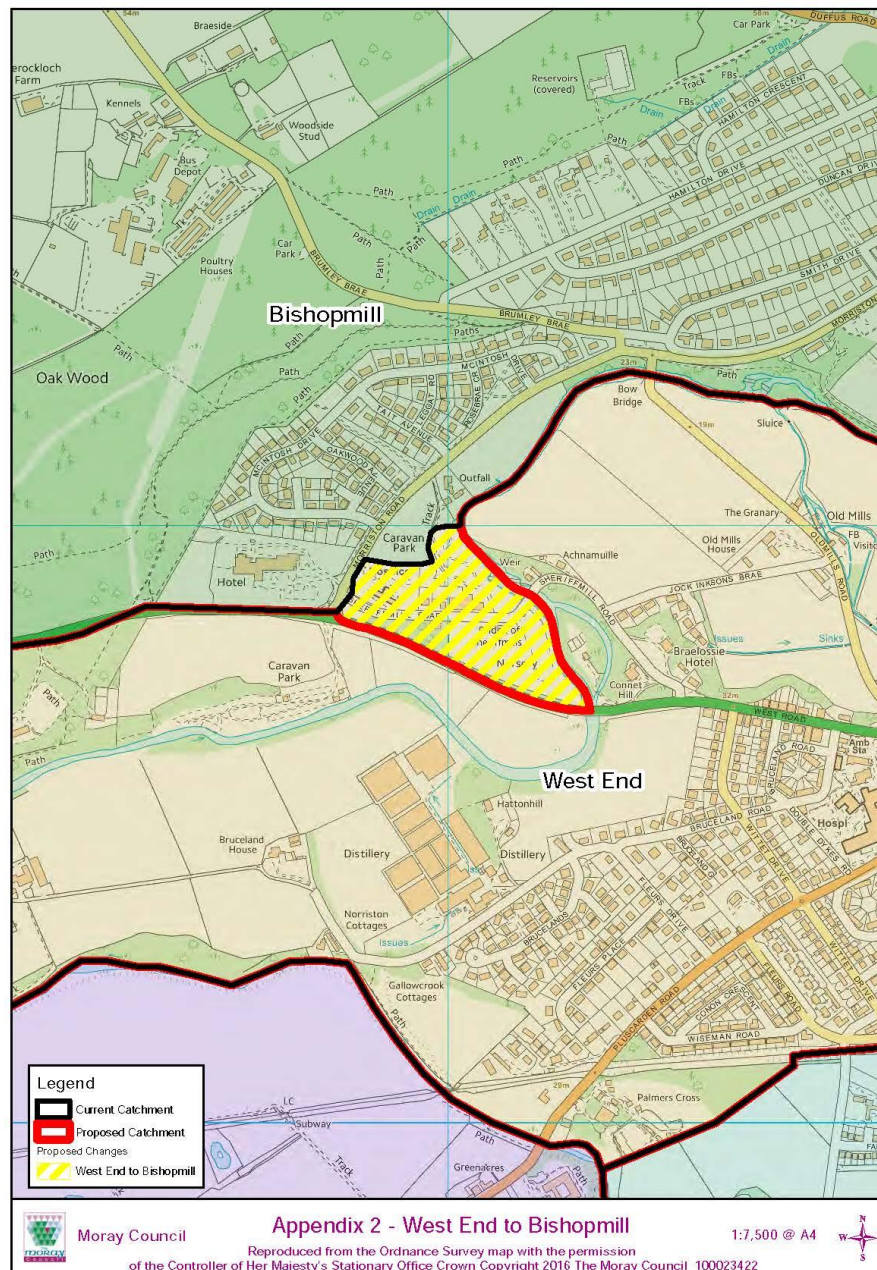


# Education and Social Care

Ambitious to Achieve Excellence Together



# Proposed Catchment Areas West End → Bishopmill

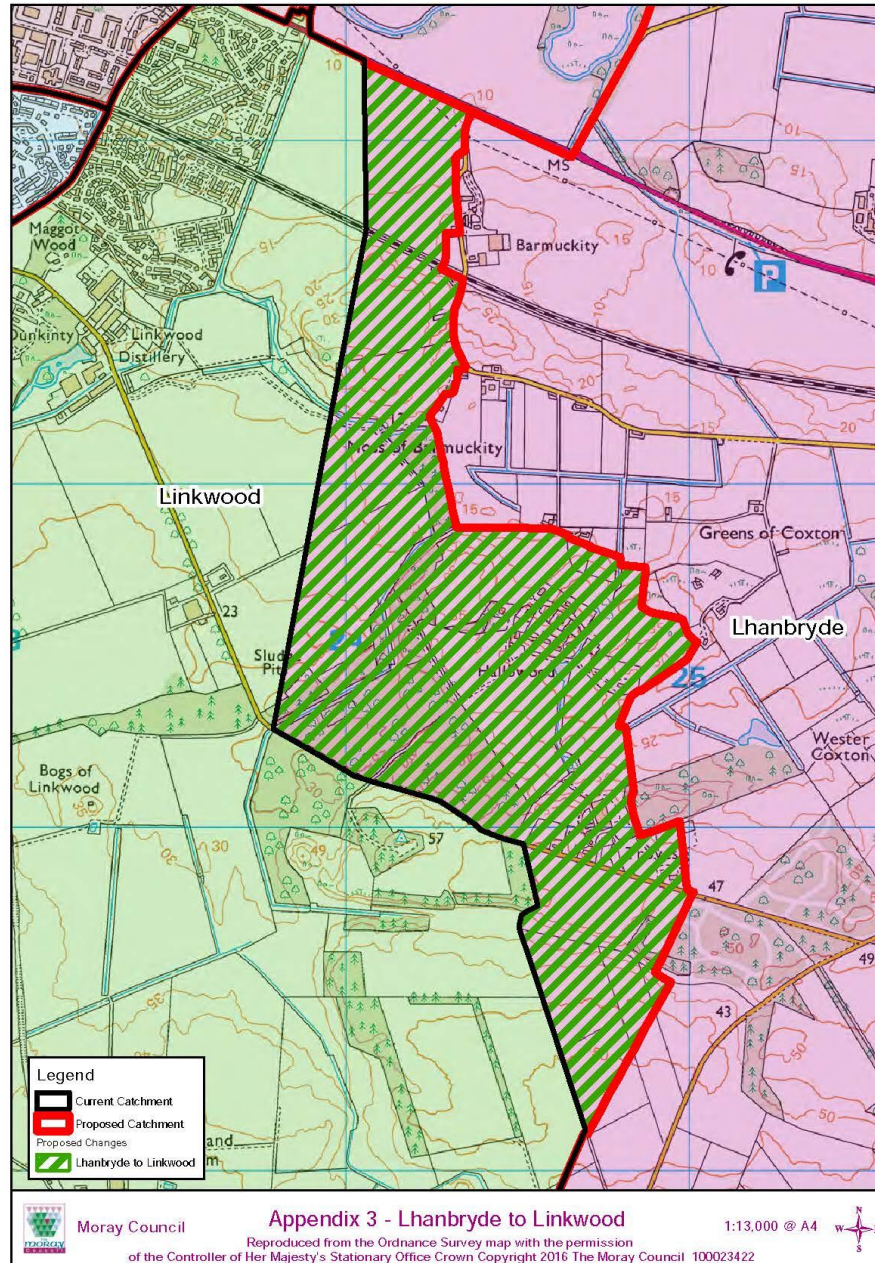


# Education and Social Care

Ambitious to Achieve Excellence Together

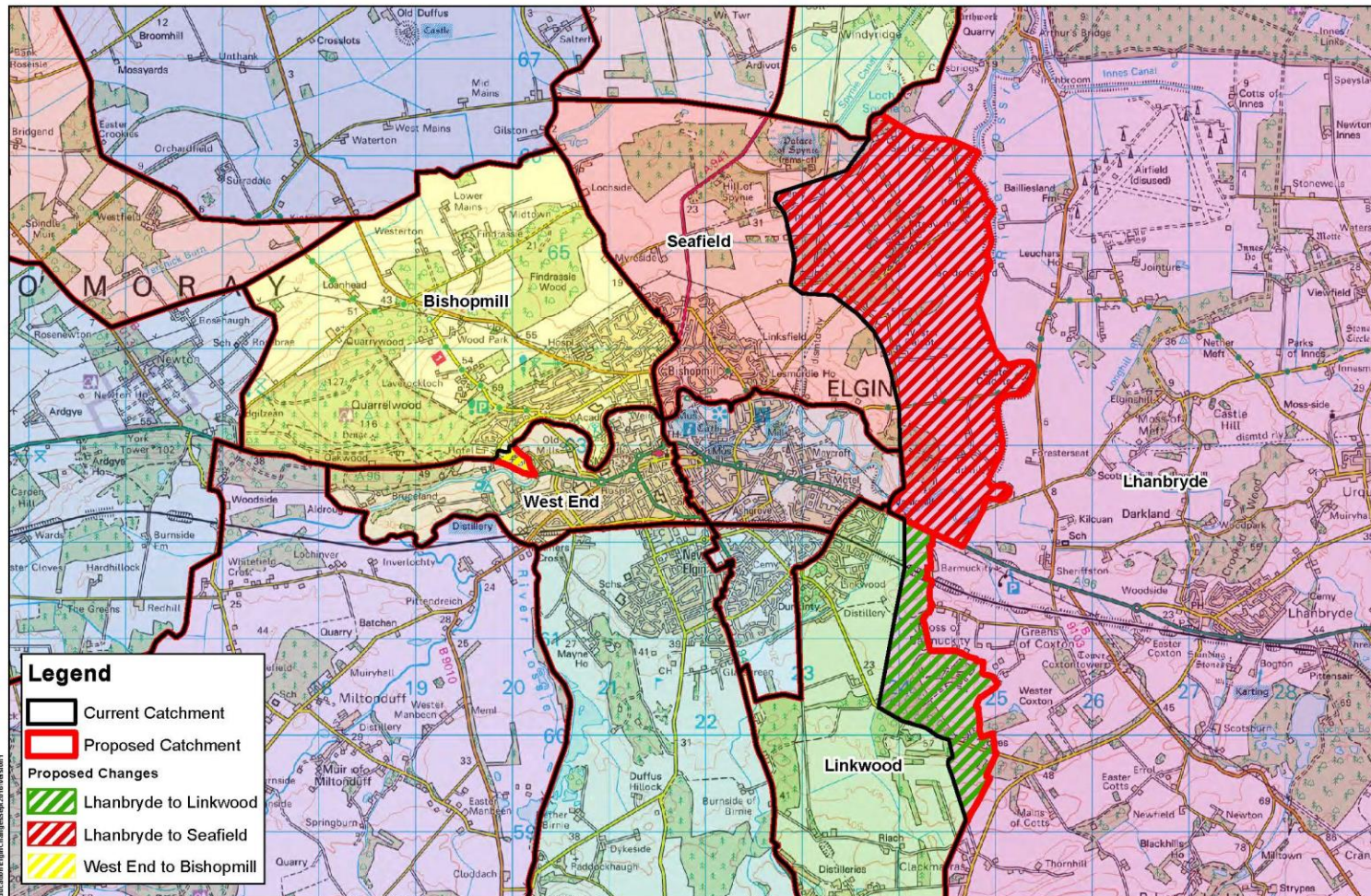


# Proposed Catchment Areas Lhanbryde → Linkwood





# Proposed Primary Catchment Areas Overview



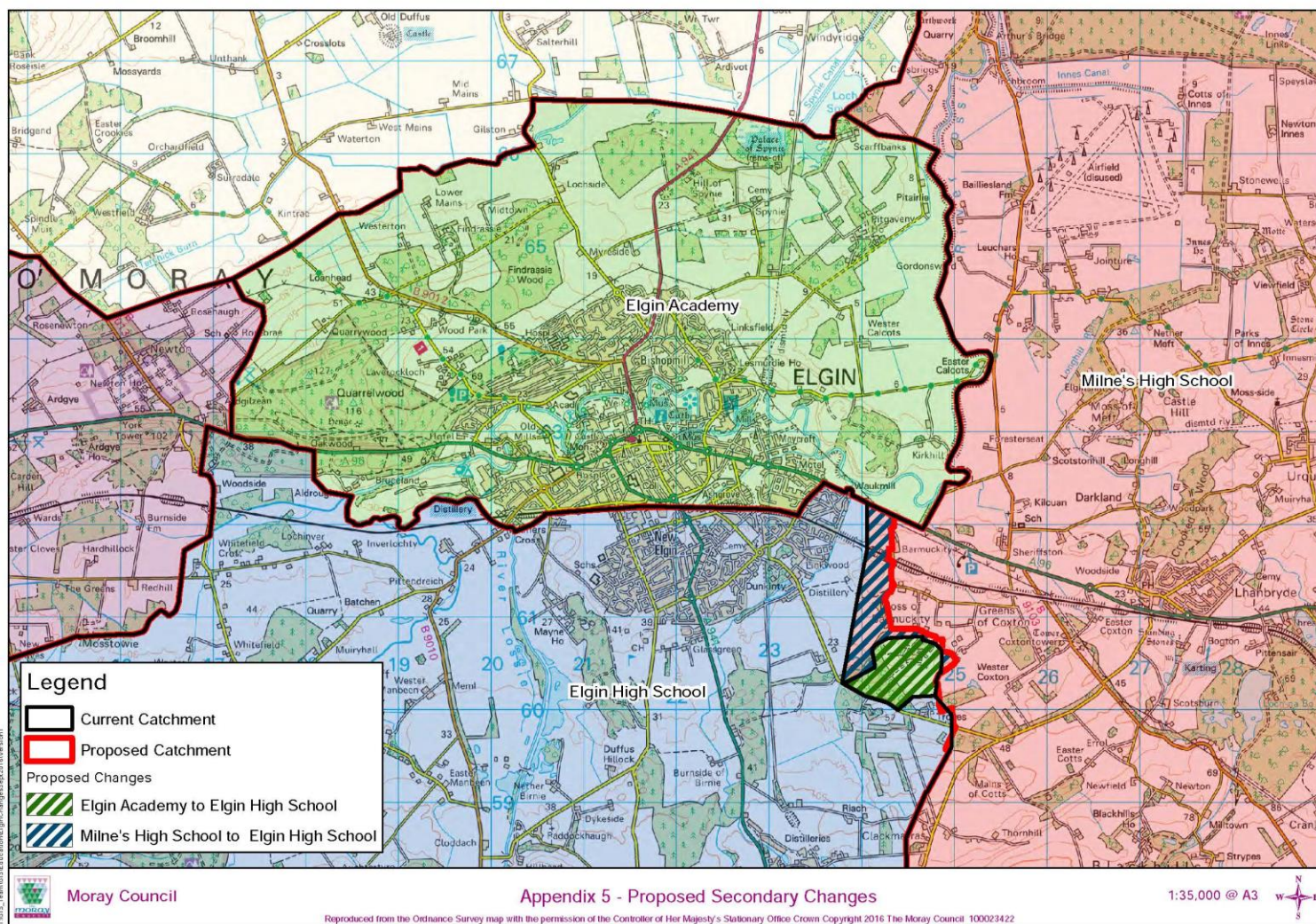
Moray Council

Appendix 4 - Proposed Primary Changes

1:35,000 @ A3

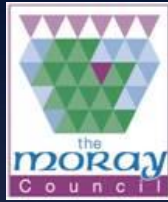
Reproduced from the Ordnance Survey map with the permission of the Controller of Her Majesty's Stationary Office Crown Copyright 2016 The Moray Council 100023422





# Educational Benefits

- Children resident in Elgin will be zoned to an Elgin school.
- Children living in the Hallowood Road, Troves area will be much closer to the proposed site of Linkwood Primary School. This will result in a shorter and safer route to school.
- Children resident on the part of Sheriffmill Road, which lies to the west of the River Lossie, will have a safer walking route to Bishopmill Primary School compared with the current route to West End Primary School.
- Children resident in the areas currently zoned to Lhanbryde Primary School and Elgin Academy will benefit from ending split zoning for their area. Split zoning increases the risk of children experiencing a discontinuity in their learning as a result of transition from primary school to a non-ASG secondary school.





# Transition Arrangements

- New zones become applicable from August 2017.
- Pupils having commenced their education when new school zones become applicable can remain in their chosen primary school.
- No existing pupils will be required to move school unless that is by parental choice.
- Parents of children who have older siblings in the schools which would have been the zoned school under the previous catchment areas, will have to make out-of-zone placing requests if they wish to attend the same school as their older sibling. These children are accorded higher priority under the Council's Admissions to Schools Policy.

# Transport Arrangements

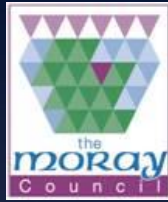
- Proposals designed to make travel to school as safe as possible.
- Currently free transport for primary school pupils who reside more than 2 miles from their zoned school.
- Parents who make successful placing requests have to make their own transport arrangements and meet the costs.
- School travel plans will be revisited once school zones are confirmed.



# Involvement of Education Scotland

Education Scotland receive copies of proposal document, written representations, summary of public meetings and other relevant documentation and prepare report on educational aspects of proposal not later than 3 weeks after the Moray Council has submitted documents.

# Timelines



Public consultation on proposals - 21/11/16 – 20/1/17

Preparation of documentation for Education Scotland – by 27/1/17

Education Scotland considers proposals – 30/1/17 – 17/2/17

Preparation of consultation report – by 6/3/17

The Moray Council to take a decision on (or after) - 5/4/17

New zones applicable – 14/8/17



# How to Respond

Responses to the consultation should be made by writing to:

School Catchment Area Consultation  
The Moray Council  
Community Support Unit  
High Street  
Elgin  
IV30 1BX

- or by e-mail to: [futureschools@moray.gov.uk](mailto:futureschools@moray.gov.uk)
- or by completing the consultation response form
- or by completing the on-line consultation form  
(link at [www.moray.gov.uk/rezoning](http://www.moray.gov.uk/rezoning))

**All responses must be submitted by 5.00pm on 20 January 2017 for them to be taken into account as part of the consultation.**



# Questions?