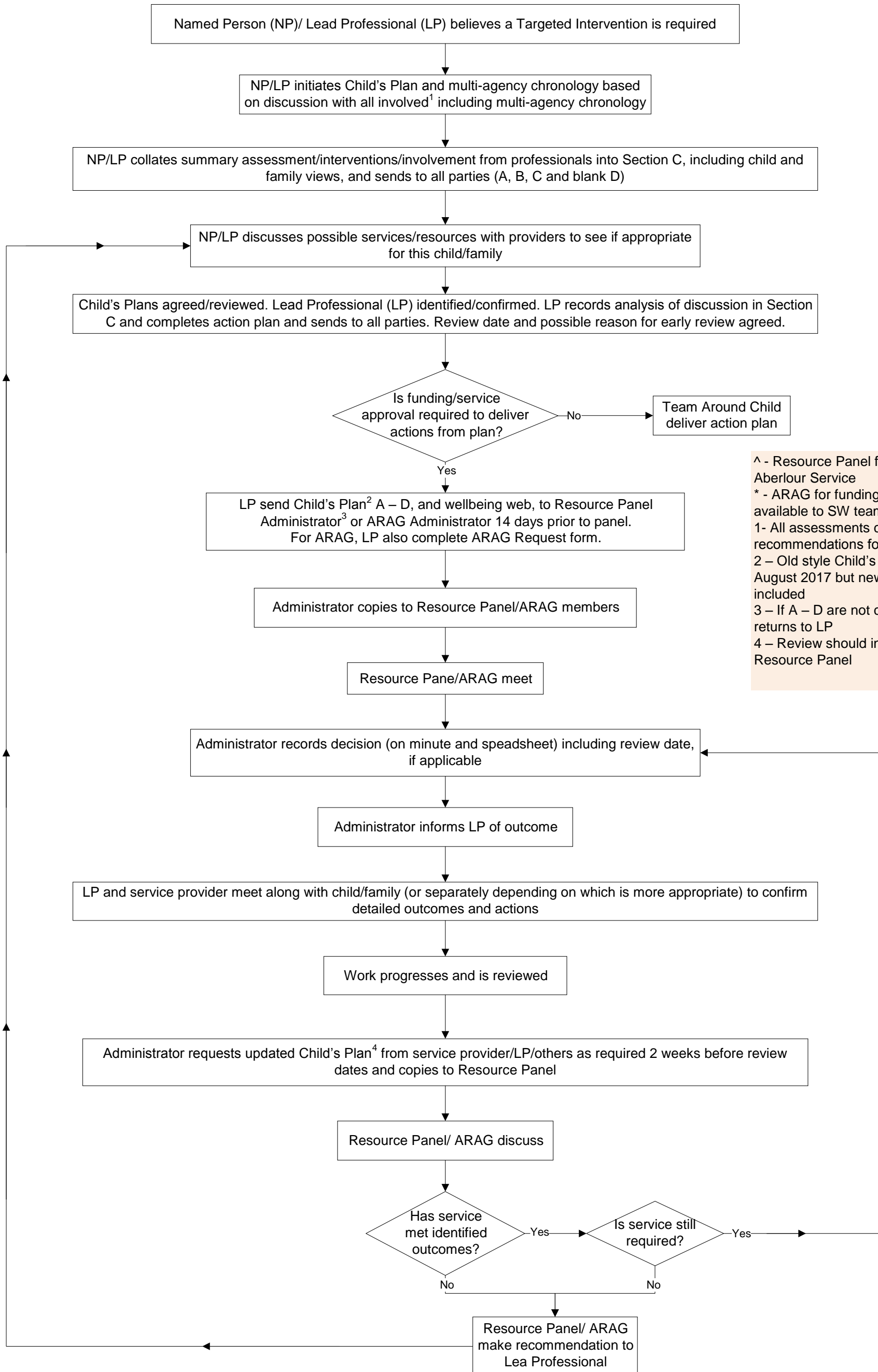


Resource Panel[^] and Additional Resources Allocation Group* Process



[^] - Resource Panel for Action for Children / Aberlour Service
^{*} - ARAG for funding of packages outwith that available to SW team
 1- All assessments contain a brief summary and recommendations for inclusion in Child's Plan
 2 – Old style Child's Plan will be accepted until August 2017 but new action plan format must be included
 3 – If A – D are not completed administrator returns to LP
 4 – Review should include wellbeing web for Resource Panel