



EDUCATION AND SOCIAL CARE

Schools Catchment Area Amendments

CONSULTATION REPORT

23 February 2017

Contents

1. INTRODUCTION.....	1
Background	1
Proposals.....	1
Purpose of Consultation	1
Consultees.....	1
Reviewing the proposal	1
2. ANALYSIS OF RESPONSES TO SURVEY QUESTIONS.....	2
Summary	2
Response Analysis	2
3. SUMMARY OF MAIN ORAL POINTS RAISED and EDUCATION AUTHORITY RESPONSE	3
4. SUMMARY OF WRITTEN POINTS RAISED and EDUCATION AUTHORITY RESPONSE	4
Issues	4
5. REPORT BY EDUCATION SCOTLAND and EDUCATION AUTHORITY RESPONSE	5
6. CONCLUSIONS AND RECOMMENDATIONS	6
Appendix A: REVISED CATCHMENT AREA MAP	7
Appendix B: PROPOSAL PAPER	9
Appendix C: EDUCATION SCOTLAND REPORT	22
Appendix D: SUMMARY OF PUBLIC MEETINGS AND WRITTEN RESPONSES..	25



1. INTRODUCTION

Background

At its meeting on 9 November 2016 Moray Council's Children and Young Peoples Services Committee agreed to formally consult on proposals to rezone five primary schools and three secondary schools.

Proposals

It was proposed to vary the catchment areas of Bishopmill, Lhanbryde, Linkwood, Seafield and West End primary schools and Elgin Academy, Elgin High School and Milne's High School based on geographical areas which are delineated on plans shown in Appendix A.

Purpose of Consultation

Varying the catchment area of a school requires a formal consultation to be carried out in accordance with the Schools (Consultation) (Scotland) Act 2010. This report documents the formal consultation undertaken on these proposals between 21 November 2016 and 20 January 2017.

Consultees

During the consultation period, views were sought from a range of stakeholders and interested parties including:

- Parents (of children of school and pre-school ages)
- Pupils
- Teaching and support staff
- Parent Councils
- Community Councils
- Local Negotiating Committee for Teachers (LNCT)
- Trade Unions
- Others interested parties.

Reviewing the proposal

The written and oral responses were analysed by the Council's Senior Education Adviser (Schools Consultations). The main issues arising have been considered by the Corporate Director (Education and Social Care), Head of Life Long Learning, Culture and Sport and Senior Education Adviser and the Corporate Director (Education and Social Care) has provided the Education Authority response to the issues. This analysis and response and the contents of the Education Scotland report inform the conclusions and recommendations in this report.

2. ANALYSIS OF RESPONSES TO SURVEY QUESTIONS

Summary

As part of the consultation the Council conducted a survey (on-line and paper) to ascertain people's views.

Response Analysis

The survey asked if respondents agreed with the proposed revised catchment areas.

There were a total of 24 responses to the survey with some respondents expressing views on more than one of the school catchment area proposals.

School Catchment Area Proposal	Number of Survey Responses	Number Agree	Number Disagree
Rezone area from Lhanbryde Primary School to Seafield Primary School.	19	14	5
Rezone area from West End Primary to Bishopmill Primary.	16	15	1
Rezone area from Lhanbryde Primary to Linkwood Primary	21	16	5
Rezone all of the revised Linkwood catchment area from Elgin Academy and Milne's High School to Elgin High School.	23	17	6

A number of statutory consultees chose not to submit responses to the consultation.



3. SUMMARY OF MAIN ORAL POINTS RAISED and EDUCATION AUTHORITY RESPONSE

Most questions at the public meeting were of a factual nature and were responded to at the meeting. These included: placing requests, school transport, admissions to schools policy and nursery transition process. The main issues are listed below along with the Education Authority's response.

Issues

1. The catchment area boundary in the Calcots area should follow specific houses rather than the river Lossie.

The Council aims to eliminate split catchment areas by ensuring the whole of the zone of a primary school forms part of the zone of one secondary school only. On educational grounds there will be important benefits for pupils, in terms of continuity and progression in their learning, in the zone of the secondary school being coterminous with the zones of the primary schools in its Associated Schools Group (ASG). The delineation for Elgin Academy and Milne's High School catchment areas is the river Lossie, therefore this suggestion is not supported.

2. The Fairfield area of Elgin should be zoned to West End Primary.

This was previously considered, as part of the 2015 rezoning consultation, and rejected due to uncertainty over the road layout in this area and potential pupil numbers due to prospective housing developments. Should the Council wish to pursue the option above, a new set of proposals and consultation would be required.



4. SUMMARY OF WRITTEN POINTS RAISED and EDUCATION AUTHORITY RESPONSE

One written response was received along with five written comments in the on-line survey. The main issues raised in written correspondence are listed below along with the Education Authority's response.

Issues

- 1. When determining catchment area boundaries, miss out curves/meandering in river and go by postcodes. Include postcode IV30 5NZ in Lhanbryde Primary.**

The river Lossie forms the eastern and southern boundary of postcode IV30 5NZ. As stated previously, the delineation for Elgin Academy and Milne's High School catchment areas is the river Lossie. This suggestion is not supported.

- 2. Concerns that siblings will be zoned to different schools and younger siblings will not receive free transport.**

All children, eligible for free transport will receive free transport to their zoned school. Children currently on the roll of a school will have the option of remaining at that school and continue to receive free transport, if so entitled. Parents would have to make out-of-zone placing requests for younger siblings to attend a non-catchment area school and would be required to meet transport costs for these children.

- 3. Where a family will now be zoned differently from their immediate neighbours, it was requested that the Council treats their circumstances with due sensitivity and that every effort be made to allow any affected children to use the bus the neighbouring children use, even though the family will have no absolute right to access it.**

The Moray Council's current policy is enhanced beyond statute. In Moray, a child or young person is entitled to free transport when a primary or secondary school aged child lives more than two miles from his/her catchment school, by the shortest reasonable walking route, or a child or young person has additional support needs and free transport is proposed through a planning and review meeting. Parents/carers who choose to have their children educated at an establishment outwith their catchment school(s) will be expected to meet transport costs. Under normal circumstances, free transport will not be provided for a child or young person as a result of a successful parental out-of-zone placing request. However, the Corporate Director (Education and Social Care) will reserve the right to provide discretionary transport.



5. REPORT BY EDUCATION SCOTLAND and EDUCATION AUTHORITY RESPONSE

The main points from the Education Scotland report were:

- The Council's proposals are of clear educational benefit.
- Transitions will be improved as will continuity and progression for learners.
- Pupil safety has been a key consideration, in particular the proposed introduction of shorter and safer routes to a number of schools.
- The proposals assist the Council to meet its agreed principle that the whole of the zone of a primary school should form part of the zone of one secondary school only.
- It would be helpful for the Council to publicly restate the position of younger siblings zoned to Elgin High School where older siblings attend Elgin Academy, should the catchment areas change.

The Council's response is that the Education Scotland report is supportive of the Council's proposals and there are no specific amendments to the proposals required as a result of the Education Scotland report. All parents will be informed of the catchment area changes, including the position of younger siblings who are zoned to Elgin High School where older siblings attend Elgin Academy.



6. CONCLUSIONS AND RECOMMENDATIONS

Reviewing the proposal

Officers of the Education Authority have listened carefully to the points made at the public meetings and have considered equally carefully the written representations and the report from Education Scotland. The main issues arising have been considered by the Corporate Director (Education and Social Care), Head of Life Long Learning, Culture and Sport and Senior Education Adviser and the Corporate Director (Education and Social Care) has provided an Education Authority response to the issues in terms of powers delegated to him.

Summary

There are clear educational benefits to the proposals. The proposals will assist the council to meet its agreed principle that the whole of the zone of a primary school should form part of the zone of one secondary school only. Implementing the proposals will result in improved transitions and improved continuity and progression for learners. Pupil safety has been a key consideration, in particular the proposed introduction of shorter and safer routes to a number of schools.

Conclusions

The Council now has three broad options for the proposed changes:

- a) abandon the proposals and maintain the status quo; or
- b) adopt the proposals in their entirety; or
- c) amend each specific proposal in some way and undertake a further consultation exercise on each new proposal.

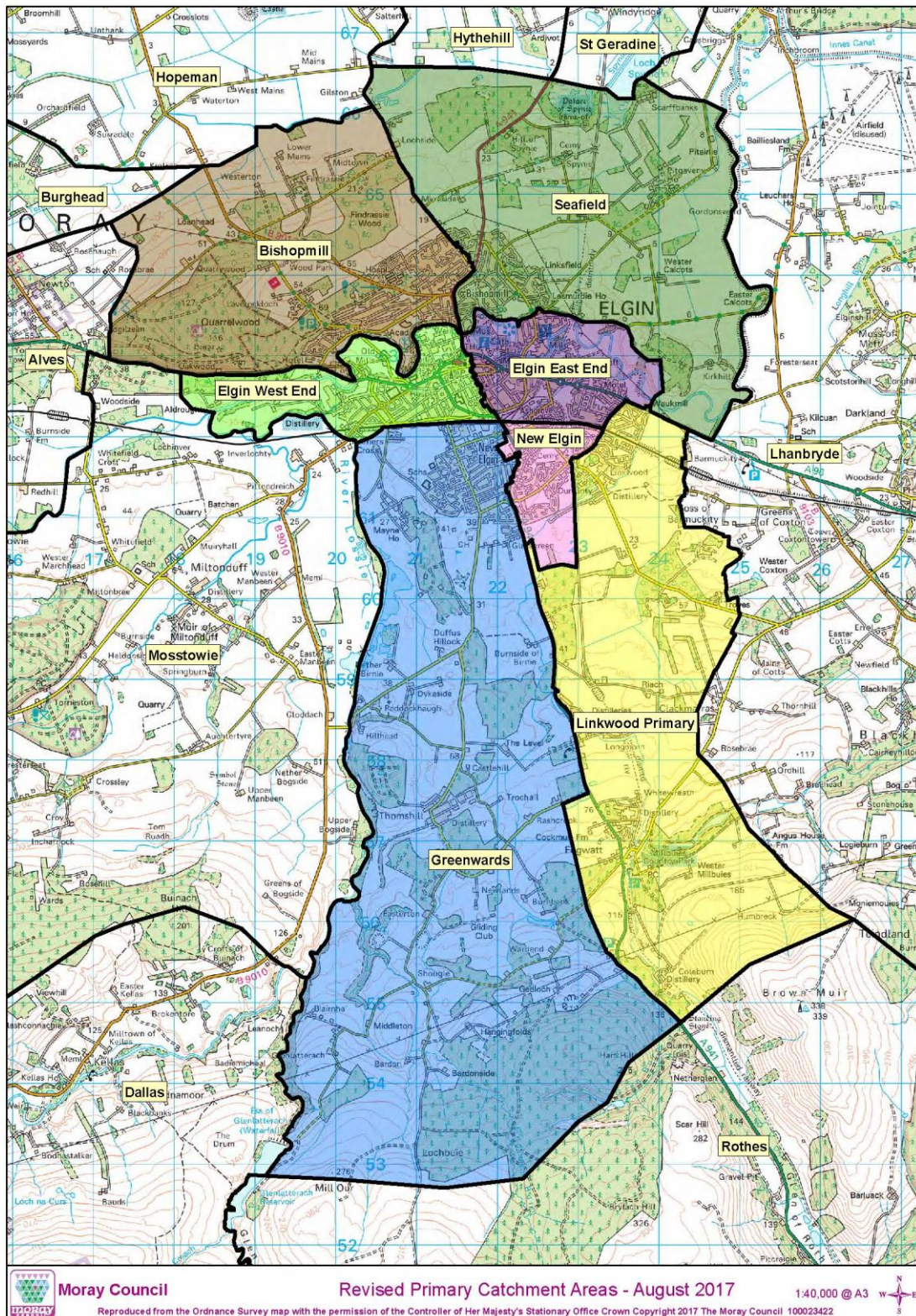
Recommendations

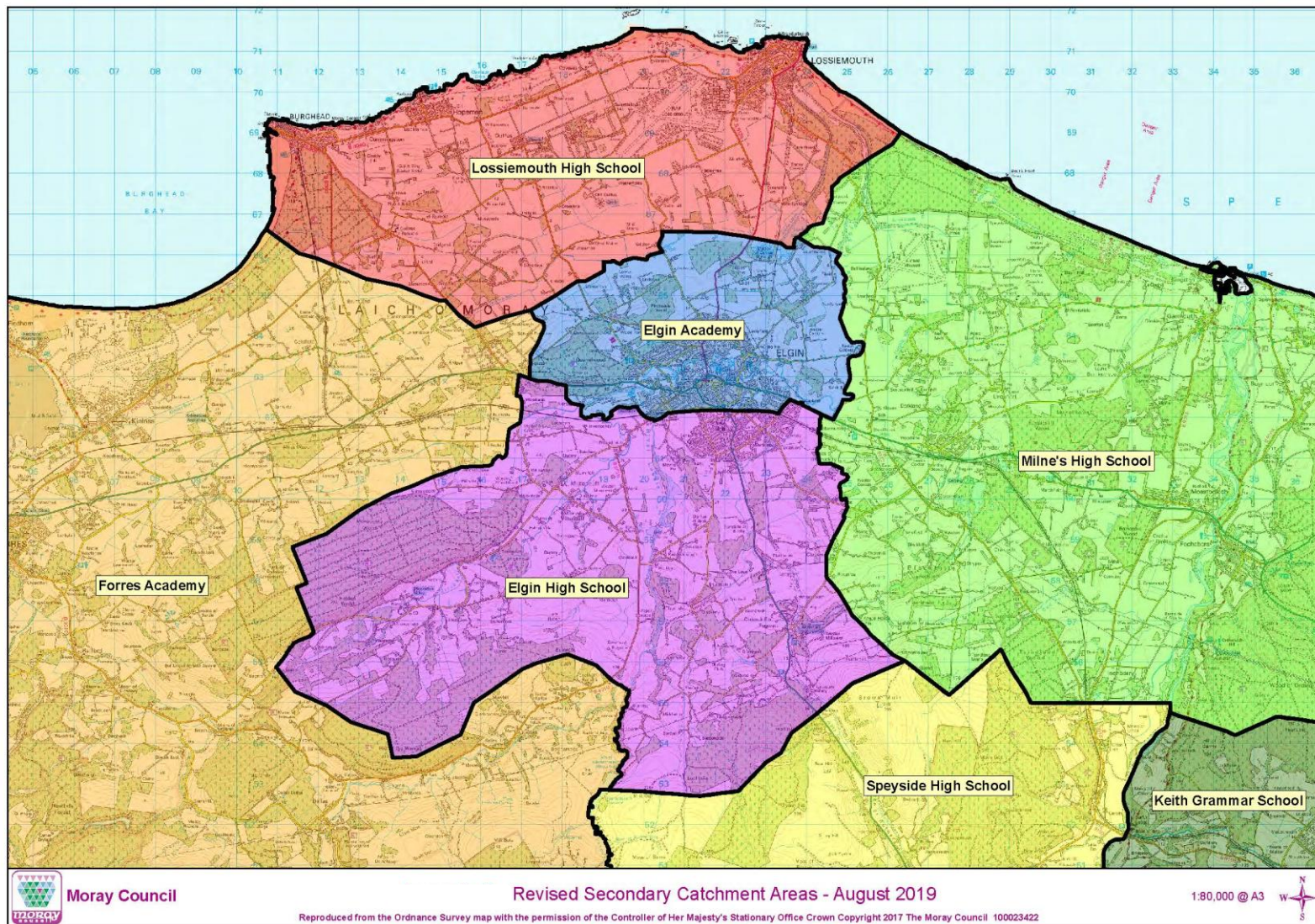
Having considered all of the written and oral submissions, along with the report from Education Scotland, officers recommend:

1. Implementing the revised catchment areas for Bishopmill, Lhanbryde, Linkwood, Seafield and West End Primary Schools, Elgin Academy, Elgin High School and Milne's High School.
2. Revised catchment areas for the primary schools should be effective from 14 August 2017.
3. Revised catchment areas for the secondary schools should be effective from the start of the school session in the August following the opening of Linkwood Primary School on its permanent site. It is expected that this will be 12 August 2019, by which time it is anticipated that the new Linkwood Primary School building will be operational.

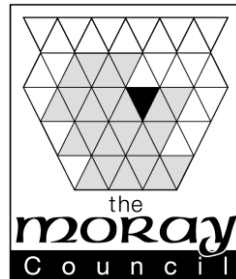
Maps showing the catchment areas now recommended for implementation as shown in **Appendix A** to this paper.

Appendix A: REVISED CATCHMENT AREA MAP





Appendix B: PROPOSAL PAPER



THE MORAY COUNCIL EDUCATION AND SOCIAL CARE DEPARTMENT

Proposal Paper

To vary the catchment areas of Bishopmill, Lhanbryde, Linkwood, Seafield and West End Primary Schools, Elgin Academy, Elgin High School and Milne's High School.

Statutory Consultation Period:

Monday 21st November 2016 – Friday 20th January 2017 inclusive (34 school days)

All submissions expressing views on the proposals detailed in this document must be submitted by 5.00pm on 20th January 2017 for them to be taken into account as part of the consultation.

It is intended to respond to issues raised during the consultation within a consultation report that will be published, at least three weeks, before the Moray Council meeting on 5th April 2017.

This document has been issued by the Moray Council for consultation in terms of the Schools (Consultation) (Scotland) Act 2010.



1. **THE PROPOSALS**

- 1.1 It is proposed to vary the zones (catchment areas) of Bishopmill, Lhanbryde, Linkwood, Seafield and West End Primary Schools, Elgin Academy, Elgin High School and Milne's High School based on geographical areas which are delineated on plans contained within this document and described below.
- 1.2 It is intended that the implementation dates for these proposals will be:
 - (i) 14th August 2017 for the revised Bishopmill, Lhanbryde, Linkwood, Seafield and West End Primary Schools' catchment areas.
 - (ii) The start of the school session in the August following the opening of Linkwood Primary School on its permanent site for the amendment to the Elgin Academy/Elgin High School and Elgin High/Milne's High catchment area.
(If the new Linkwood Primary School building opens during session 2018/19 then this catchment area change would take effect from August 2019.)

2. **BACKGROUND**

- 2.1 Following statutory consultations, The Moray Council approved revised zones for Elgin primary schools on 11 November 2015 and revised secondary school zones were approved by the Children and Young People's Services Committee on 22 June 2016.
- 2.2 There are a few issues which arose either during, or after, these consultations which should be now be addressed and would effectively 'tidy up' the school catchment areas within, and bordering, Elgin.
- 2.3 The areas proposed for amendment are described below.
 - 2.3.1 It had been proposed that children resident in the area zoned to Lhanbryde Primary School and Elgin Academy which lies to the north of the A96 and to the west of the river Lossie be zoned to Milne's High School. Respondents to the consultation on secondary rezoning made a good case for not altering the secondary zoning arrangements for this particular area and it was decided that children should continue to be zoned to Elgin Academy due to the proximity to Elgin and the potential for a safe cycle route to Elgin Academy. One of the agreed rezoning principles was that the whole of the zone of a primary school should form part of the zone of one secondary school only, except where there is an exceptional case for a different arrangement. This circumstance was seen to be an exceptional case and it was seen as important that the Elgin Academy zone remained in place for children in this area. It is now proposed to consult on rezoning the geographical area described above from Lhanbryde Primary School to Seafield Primary School. In doing this, any children resident in this area may be able to use a safe cycle



route to Elgin Academy and the agreed rezoning principle that the whole of the zone of a primary school should form part of the zone of one secondary school only will be met.

- 2.3.2 The primary school zones agreed in 2015 were based on geographical areas delineated on maps which were informed by post code areas. Subsequent to the Council's rezoning decision it has been brought to officers' notice that there is a small geographical area within post code IV30 6UH (Sheriffmill Road) which, if zoned to Bishopmill Primary rather than West End Primary, would result in a safer walking route to school.
- 2.3.3 At a public meeting to discuss the Elgin primary school rezoning proposals (April 2015) parents suggested extending the new south-east Elgin school zone (Linkwood Primary School) to include Hallowood Road, Troves which is currently in the Lhanbryde catchment area but will be much closer to the proposed site of Linkwood Primary School.
- 2.3.4 Following the consultation on secondary rezoning it was agreed that, for the present time, children resident in Hallowood Road, Troves area should continue to be zoned to Elgin Academy, rather than Milne's High School, due to a number of factors including proximity to Elgin, no through road to Lhanbryde and the fact that none of the children resident in that area, at the time of the consultation, actually attended Lhanbryde Primary School.
- 2.3.5 The area identified in the Moray Local Development Plan as LONG 2 in south Elgin extends beyond the Linkwood Primary catchment area into the Lhanbryde and Milne's High School catchment areas. It is proposed that all of this area is included in the Linkwood Primary catchment area to ensure that, in the future, children resident in Elgin are zoned to an Elgin school. There are currently no residences in this area.

3. **THE PROPOSALS**

- 3.1 It is proposed to rezone the geographical area which lies to the north of the A96 and to the west of the river Lossie from Lhanbryde Primary School to Seafeld Primary School. (See **Appendix 1**)
- 3.2 It is proposed to rezone a small geographical area within post code IV30 6UH (Sheriffmill Road) from West End Primary to Bishopmill Primary. (See **Appendix 2**)
- 3.3 It is proposed to rezone part of Lhanbryde catchment area including the Hallowood Road, Troves area to Linkwood Primary. (See **Appendix 3**)
- 3.4 It is proposed to rezone all of the revised Linkwood Primary School catchment area from Elgin Academy and Milne's High school to Elgin High School. (See **Appendix 5**)
- 3.5 Proposed primary school catchment changes summarised in **Appendix 4**.



4. TRANSITION ARRANGEMENTS

- 4.1 Pupils living in the affected areas who have already commenced their primary or secondary education at the time of the new school zones becoming applicable can remain in their chosen school. No existing school pupils will be required to move school when new zones are established unless that is by parental choice.
- 4.2 Parents of children making a placing request to their children's zoned school and subsequently enrolling in any of the affected primary schools from 14th August 2017 onwards will do so on the basis of the revised catchment areas.
- 4.3 Parents of children who make in-zone placing requests and subsequently enrol in their catchment area schools after catchment areas change, and have older siblings in the schools which would have been the zoned school under the previous catchment areas, will have to make out-of-zone placing requests if they wish their younger child(ren) to attend the same school as their older sibling(s).
- 4.4 Children resident in the Hallowood Road, Troves area, who currently attend an Elgin primary school by placing request, can transfer to Elgin Academy as an in-zone pupil.
- 4.5 Children who are zoned to Linkwood Primary, following the implementation of revised catchment areas, will transfer to Elgin High School, rather than either Elgin Academy or Milne's High School, from the August following the new Linkwood Primary School building opening.

5. TRANSPORT ARRANGEMENTS

- 5.1 While zoning is important in addressing capacity issues in Elgin, pupil safety is also of paramount importance. These proposals are designed to make travel to school as safe as possible.
- 5.2 The Moray Council currently provides free school transport for primary school pupils who reside more than 2 miles from their designated zoned school, determined following any decision on zoning taken by the Moray Council.
- 5.3 Parents who make successful placing requests for their children to attend schools, other than their catchment area school, have to make their own transport arrangements and meet the costs thereof.
- 5.4 School travel plans are an essential part of the Moray Council's strategy to address issues related to transport to school. School travel plans also include promotion of initiatives to increase the number of children who walk or cycle to school. School travel plans can help reduce congestion, increase road safety,



make routes to school safer, help protect the environment and encourage children to adopt healthy lifestyles.

- 5.5 If these proposals are adopted there should be no significant changes to school transport arrangements for eligible pupils, however some children will have a shorter distance to their new zoned school. It is also recognised that there may be changes to methods of travel for some pupils who will, in the future, be within closer walking or cycling distance to their zoned school. School travel plans will require to be revisited once new catchment areas are confirmed.

6. EDUCATIONAL BENEFITS STATEMENT

- 6.1.1 Children resident in Elgin will be zoned to an Elgin school and families will have clear information on their zoned primary school in Elgin, thereby providing a degree of certainty which may be lacking at the present time.
- 6.1.2 Families who live in in the Hallowood Road, Troves area will be much closer to the proposed site of Linkwood Primary School. This will result in a shorter and safer route to school.
- 6.1.3 Children resident on the part of Sheriffmill Road, which lies to the west of the River Lossie, will have a safer walking route to Bishopmill Primary School compared with the current route to West End Primary School which lies on the opposite side of the A96.
- 6.1.4 Children resident in the areas currently zoned to Lhanbryde Primary School and Elgin Academy will benefit from ending split zoning for their area. Split zoning increases the risk of children experiencing a discontinuity in their learning as a result of transition from primary school to a non-Associated Schools Group (ASG) secondary school. Implementing these proposals will improve continuity and progression for learners.

6.2 Likely effects for children currently attending Elgin primary schools

- 6.2.1 The proposals will ensure that all Elgin primary schools will have clear and distinct associations with their local communities. Current zones, which do not match the Associated Schools Group, have not always been understood by parents. Families who live in the affected areas will have clear information on their zoned school.
- 6.2.2 Partnership working between the schools means that children within the ASG study similar progressions of work which have been agreed between schools and have similar starting points when they arrive at secondary phase. Implementing these proposals will therefore result in improved curricular coherence for pupils.
- 6.2.3 As a member of an ASG children have many opportunities throughout their school life to work collaboratively with children from other ASG primary



schools. This is an excellent transition both educationally and socially for those children going to the associated secondary school. These opportunities are available because of the close working relationships which exist between the staff, head teachers and other agencies supporting the ASG schools. Zoning all pupils to the ASG secondary school will ensure all pupils can enjoy these benefits.

6.3 Likely effects for children who become pupils of schools in the next two years.

6.3.1 There would be no detriment to future users of the provision.

6.3.2 Where new zones for Bishopmill, Lhanbryde, Linkwood, Seafield and West End Primary Schools, Elgin High School Elgin Academy and Milne's High School become applicable, children will enrol in these schools from the effective dates following the decision of the Moray Council to change the catchment areas.

6.4 Likely effects on other users of the schools' facilities

6.4.1 There would be no detriment to other users of the schools' facilities.

6.5 Likely effects on children and young people in other Moray Council schools

6.5.1 These proposals will have no significant adverse impact on children attending other schools in Moray.

6.6 Other likely effects of the proposals

6.6.1 No other effects have been identified.

6.7 How the Council intends to minimise or avoid potential adverse effects

6.7.1 Teaching and support staff will work closely with all affected children to ensure that their learning, pastoral and social needs are fully supported during any transition process, including enhanced arrangements for children and young people with Additional Support Needs.

6.7.2 An equality impact assessment has been carried out on these proposals and consultation process. This concludes that introducing this proposal will not have an adverse impact on any of the groups considered. The equality impact assessment is attached as **Appendix B**.

6.8 Summary of benefits resulting from implementation of the proposals

6.8.1 The benefits are all highlighted in the preceding paragraphs, but they can be summarised as follows:



- i) almost all children affected by these proposals will live closer to their zoned school and consequently will have shorter and safer routes to school.
- ii) the removal of split zoning will improve continuity and progression in learning for those children affected by the proposals.

6.8.2 The Council has arrived at these conclusions, primarily, from a comprehensive analysis of historical placing requests within Elgin and a detailed study of future housing developments. There has also been consultation with head teachers on the potential impacts of roll projections on schools' ability to continue to deliver good quality learning and teaching in suitable learning environments. There has also been a range of informal discussions with authority officers within Education and Social Care, Planning and Transportation which have supported these proposals.

6.8.3 In delivering these broad benefits, the authority is confident that it is discharging its duty to secure best value by continuous improvement in the performance of its functions, as required in the Local Government in Scotland Act 2003.

7. THE CONSULTATION PROCESS

7.1 Formal consultation will run from Monday 21st November 2016 – Friday 20th January 2017 inclusive (34 school days)

7.2 As required by the Schools (Consultation) (Scotland) Act 2010, formal consultation includes:

- the preparation of this proposal paper
- a letter to the parents/carers of children at all affected schools
- a letter to the parents/carers of children at all Elgin and Lhanbryde pre-school centres (those children expected to attend the affected schools within two years of the publication of these proposals)
- information, including the proposal paper, placed on the Council's website
- information on the proposals communicated through social media
- an announcement of the proposal in the local press, inviting any person to make written representation to the Corporate Director (Education and Social Care)
- a public meeting in Elgin as shown below
- consultation with the parent councils of all affected schools
- consultation with the staff of the establishments
- consultation with pupils who will be affected by the proposals
- consultation with Community Councils in the affected areas; and
- consultation with representatives of the teacher and support staff trade unions.



- 7.3 A formal consultation public meeting is arranged as follows:

Date	Venue	Time
Wednesday 30 th November	Elgin Town Hall (Supper Room)	7.00pm

- 7.4 Following consultation, it is hoped that The Moray Council will be able to take a final decision on the proposals at its meeting on 5th April 2017.

8. INVOLVEMENT OF EDUCATION SCOTLAND

- 8.1 A copy of this proposal document has been sent to Education Scotland. Education Scotland will also receive a copy of any written representations that are received by Moray Council from any person during the consultation period. Education Scotland will also receive a summary of any oral representation made to the Moray Council at the public meetings and a copy of any other relevant documentation.
- 8.2 After the Moray Council has sent Education Scotland all representations and documents mentioned above, Education Scotland will prepare a report on the educational aspects of the proposals. This will take place during the period 30 January to 17 February 2017. In preparing their report, Education Scotland may visit the affected establishments and make such reasonable enquiries of such people there, or such other people as they consider appropriate.
- 8.3 On receipt of the Education Scotland report, it will be necessary to review the proposals, and thereafter, the Corporate Director (Education and Social Care), on behalf of the education authority, will prepare and publish a consultation report, containing the views of Education Scotland and including an explanation of how the Moray Council proposes to deal with any issues raised. After a period of no less than three weeks, the Moray Council will consider the consultation report and decide whether or not to approve the proposals.

9. NOTE ON CORRECTIONS

- 9.1 If any apparent inaccuracy or omission is discovered in this proposal document either by the Moray Council or any person, the Moray Council will determine if relevant information has been omitted or if there has been an inaccuracy. If it is determined that there has been an inaccuracy or omission the Moray Council will then take appropriate action which may include the issue of a correction or the reissuing of the proposal paper or the revision of the timescale for the consultation period as appropriate. In that event, any person highlighting the inaccuracy to the Moray Council, relevant consultees and Education Scotland will be advised.



10. EQUALITY STATEMENT

- 10.1 An equality impact assessment has been carried out on these proposals and consultation process to assess the proposal's relevance to the public sector equality duties on the basis of:
- Sex
 - Religion
 - Racial group
 - Disability
 - Sexual orientation
 - Gender reassignment
 - Pregnancy and maternity
- 10.2 The equality impact assessment concluded that introducing these proposals will not have an adverse impact on any of the groups listed. Any impacts identified through the consultation process will be investigated prior to the final consultation report being issued and a decision being made. The equality impact assessment is attached as **Appendix B**.

11. SUBMISSION OF VIEWS

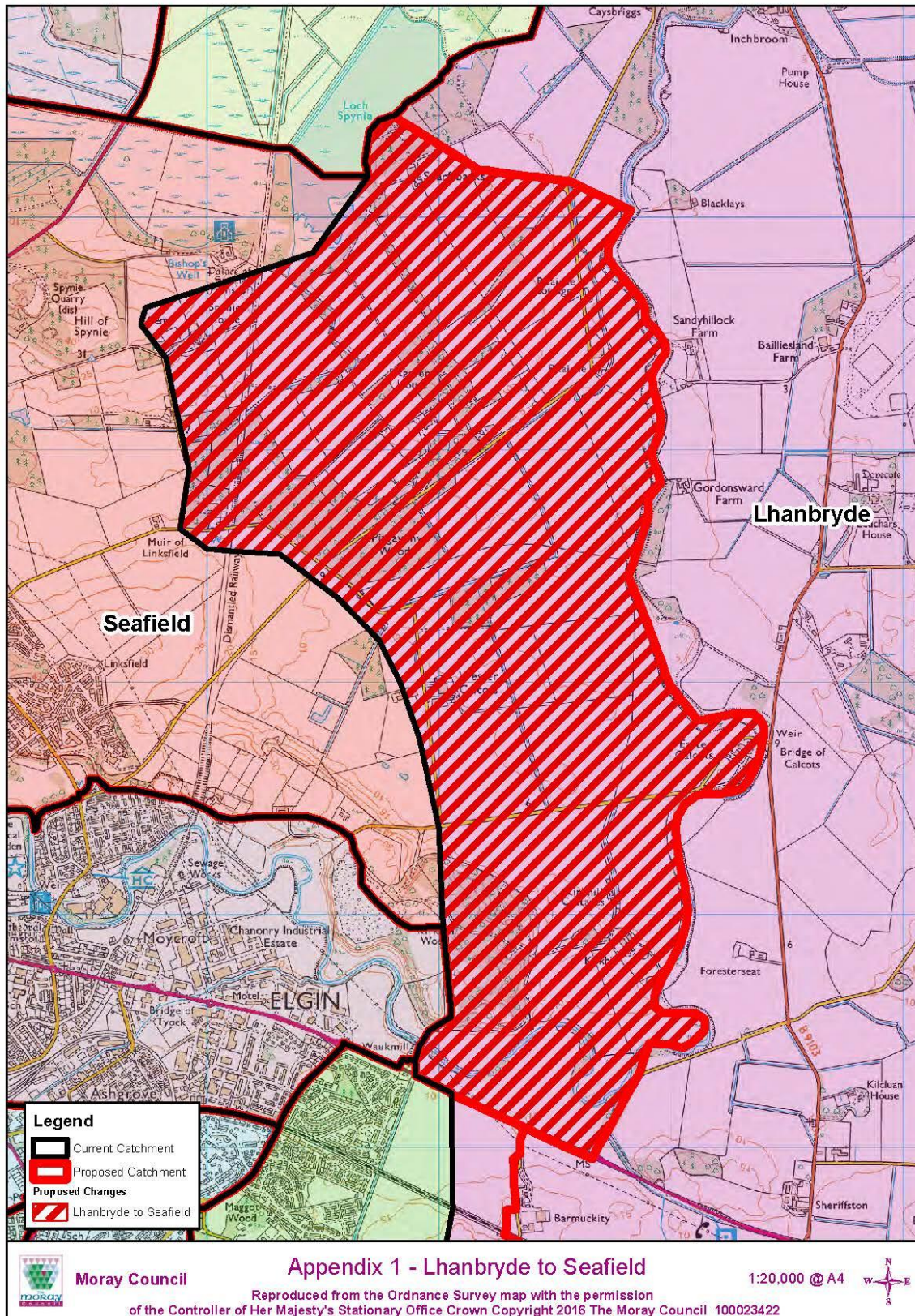
- 11.1 Responses to the consultation should be made by writing to:
- School Catchment Area Consultation
The Moray Council
Community Support Unit
High Street
Elgin
IV30 1BX

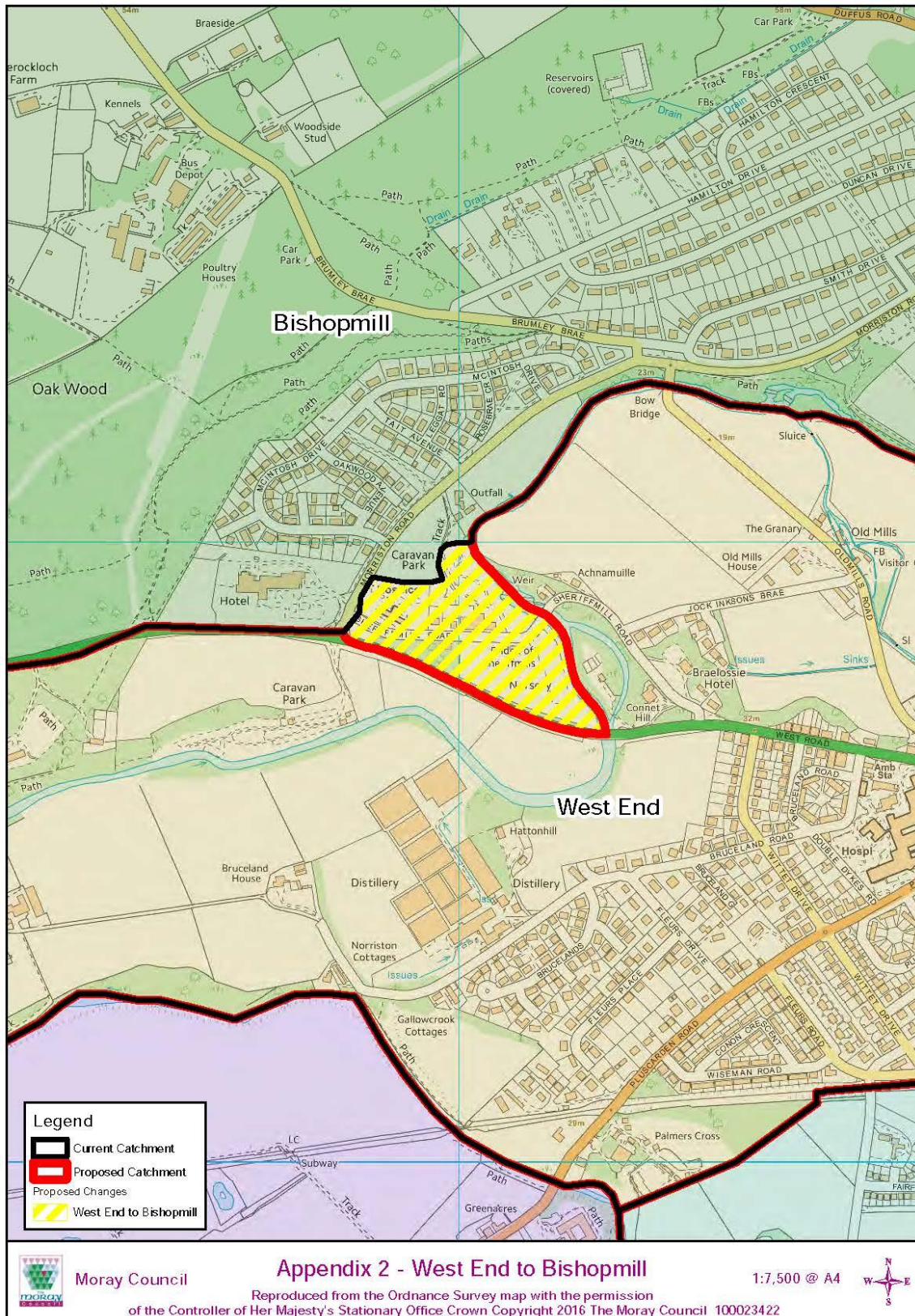
or by e-mail to: futureschools@moray.gov.uk
or by completing the attached consultation response form
or by completing the on-line consultation form by following the links at www.moray.gov.uk

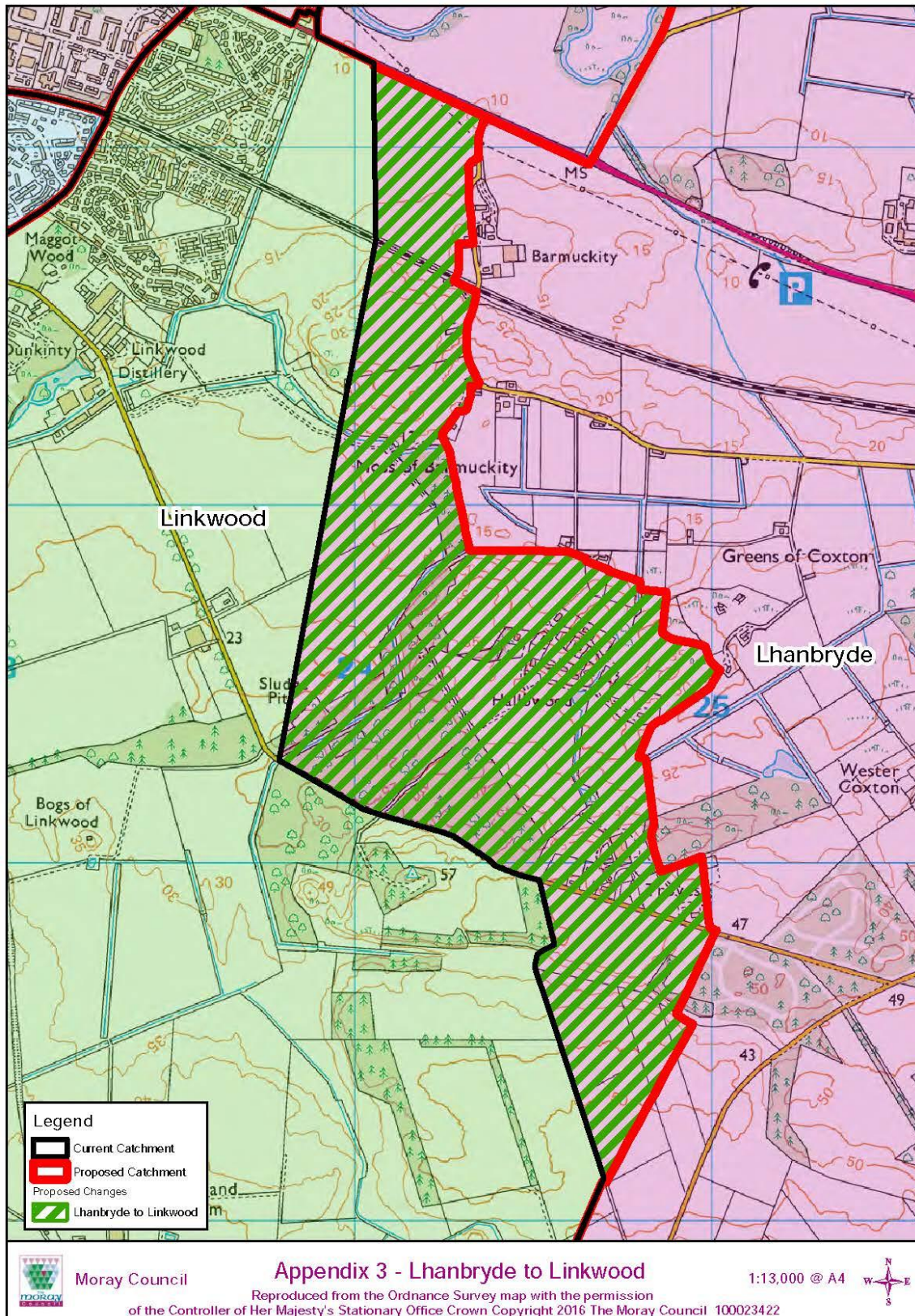
All responses must be submitted by 5.00pm on Friday 20th January 2017 for them to be taken into account as part of the consultation.

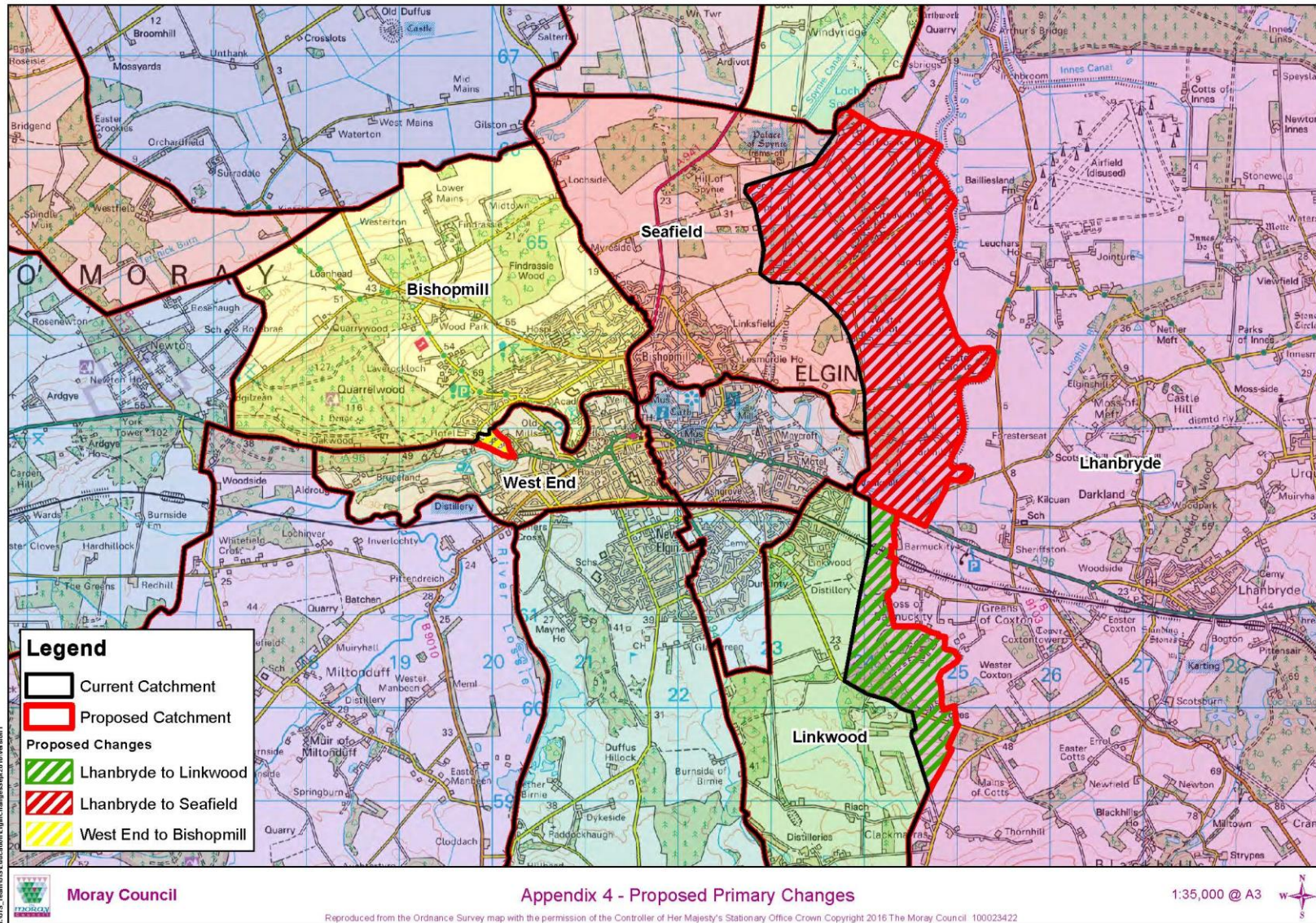
12. OUTCOME OF CONSULTATION

- 12.1 It is intended that a consultation report including a summary of the submissions will be published on the council website. This will be available by following the links at: www.moray.gov.uk
- 12.2 It is intended that a report on the consultation will be presented to the Moray Council on 5th April 2017. This will provide information for Elected Members to make a final decision on the proposals.











Appendix C: EDUCATION SCOTLAND REPORT

Report by Education Scotland addressing educational aspects of the proposal by The Moray Council to vary the catchment areas of Bishopmill, Lhanbryde, Linkwood, Seafield and West End Primary Schools and Elgin Academy, Elgin High School and Milne's High School.

1. Introduction

1.1 This report from Education Scotland has been prepared by HM Inspectors in accordance with the terms of the *Schools (Consultation) (Scotland) Act 2010* and the amendments contained in the *Children and Young People (Scotland) Act 2014*. The purpose of the report is to provide an independent and impartial consideration of The Moray Council's proposal to vary the catchment areas of Bishopmill, Lhanbryde, Linkwood, Seafield and West End Primary Schools and Elgin Academy, Elgin High School and Milne's High School. Section 2 of the report sets out brief details of the consultation process. Section 3 of the report sets out HM Inspectors' consideration of the educational aspects of the proposal, including significant views expressed by consultees. Section 4 summarises HM Inspectors' overall view of the proposal. Upon receipt of this report, the Act requires the council to consider it and then prepare its final consultation report. The council's final consultation report should include a copy of this report and must contain an explanation of how, in finalising the proposal, it has reviewed the initial proposal, including a summary of points raised during the consultation process and the council's response to them. The council has to publish its final consultation report three weeks before it takes its final decision. Where a council is proposing to close a school, it needs to follow all legislative obligations set out in the 2010 Act, including notifying Ministers within six working days of making its final decision and explaining to consultees the opportunity they have to make representations to Ministers.

1.2 HM Inspectors considered:

- the likely effects of the proposal for children and young people of Bishopmill, Lhanbryde, Linkwood, Seafield and West End Primary Schools and Elgin Academy, Elgin High School and Milne's High School; any other users; children likely to become pupils within two years of the date of publication of the proposal paper; and other children and young people in the council area;
- any other likely effects of the proposal;
- how the council intends to minimise or avoid any adverse effects that may arise from the proposal; and
- the educational benefits the council believes will result from implementation of the proposal, and the council's reasons for coming to these beliefs.



1.3 In preparing this report, HM Inspectors undertook the following activities:

- attendance at the public meeting held on 30 November 2016 in connection with the council's proposal;
- consideration of all relevant documentation provided by the council in relation to the proposal, specifically the educational benefits statement and related consultation documents, written and oral submissions from parents and others; and
- visits to the site of Bishopmill, Lhanbryde, Seafield and West End Primary Schools and Elgin Academy and Milne's High School, including discussion with relevant consultees.

2. Consultation Process

2.1 The Moray Council undertook the consultation on its proposal with reference to the *Schools (Consultation) (Scotland) Act 2010* and the amendments in the *Children and Young People (Scotland) Act 2014*.

2.2 The formal consultation ran from 21 November 2016 until 20 January 2017. The proposal paper was made available in paper format at all affected schools and in local libraries. It was also posted on the council's website. Letters were issued to parents at all affected schools. Community councils in the affected areas were consulted. A public meeting was held on 30 November 2016 with a total of nine members of the public in attendance. The council received 24 responses to an online survey and one written response. Of these submissions, between 14-17 were supportive of all four aspects of the proposal. Between 1-6 respondents were not in favour of the proposal. The main concerns raised were the use of the River Lossie to determine catchment area boundaries, older siblings being zoned to different schools and eligibility for free transport.

2.3 A written response was received from the City and Royal Burgh of Elgin Community Council. This was supportive of the council's proposal. The council took appropriate steps to consult with children and young people. Children and young people were overall supportive of the proposal.

3. Educational Aspects of Proposal

3.1 The council has set out a reasonable case for the proposed changes to the catchment areas of Bishopmill, Lhanbryde, Linkwood, Seafield and West End Primary Schools and of Elgin Academy, Elgin High School and Milne's High School. In arriving at its proposal it gave good consideration to pupil safety, in particular, by identifying shorter and safer routes to a number of schools. The proposal to rezone part of West End Primary School catchment to Bishopmill Primary School removes the need for children to cross the busy A96. Children resident in the areas currently zoned to Lhanbryde Primary School and Elgin Academy will benefit from the ending of the split zoning for their area. This will improve transition arrangements and ensure continuity and progression for learners. There is no detriment for families who currently attend Bishopmill, Lhanbryde, Linkwood, Seafield and West End



Primary Schools or Elgin Academy, Elgin High School and Milne's High School. The proposal assists the council to meet its agreed principle that the whole of the zone of a primary school should form part of the zone of one secondary school only.

3.2 All parents, staff and children from Bishopmill, Lhanbryde and Seafield Primary Schools who met with HM Inspectors were supportive of the proposal. Parents and children from all schools saw clear benefits in all children at a given primary school moving to the same secondary school. Parents and children also welcomed the introduction of safer routes to school taking out the need for children to cross busy roads. Parents from West End Primary School who met with HM Inspectors had no particular views on the proposal.

3.3 All parents and staff from Elgin Academy, Elgin High School and Milne's High School who met with HM Inspectors were supportive of the proposal. Whilst the impact would be minimal they welcomed the introduction of safer routes and the potential to improve transitions for young people through the removal of split zoning.

4. Summary

The council's proposal is of clear educational benefit. Pupil safety has been a key consideration, in particular the proposed introduction of shorter and safer routes to a number of schools. The proposal assists the council to meet its agreed principle that the whole of the zone of a primary school should form part of the zone of one secondary school only. Transitions will be improved as will continuity and progression for learners. In taking forward the proposal it would be helpful for the council to publicly restate the position of younger siblings zoned to Elgin High School where older siblings attend Elgin Academy, should the catchment areas change.

HM Inspectors
Education Scotland
February 2017

Appendix D: SUMMARY OF PUBLIC MEETINGS AND WRITTEN RESPONSES



Moray Council

Schools Catchment Area Amendments Consultation

Public Meeting

11 November 2016



Elgin Town Hall Public Meeting (30.11.2016)

In attendance:

Graham Jarvis (Head of Lifelong Learning, Culture & Sport)
Paul Watson (Senior Education Adviser for Schools Consultations)

Alison McLaughlin (CEO Admin Assistant)

HMI Sally Stewart (Education Scotland)

Elected Members In Attendance:

Cllr John Divers (Scottish Labour Party)
Cllr Mike Shand (Scottish National Party)
Cllr Graham Leadbitter (Scottish National Party)
Cllr Patsy Gowans (Scottish National Party)

Number of Community Representatives / Members of the Public in Attendance:

9

Graham Jarvis welcomed all attendees to the meeting and provided an introduction to the School Catchment Area Amendments Consultation. Paul Watson carried out a presentation on the proposal. A question and answer session followed the presentation.

Question & Answer Session

Q	Calcots area is split by the river and neighbours will be zoned to different primary schools; would it not make sense for this catchment area to follow specific houses rather than a river?
A	The delineation for Elgin Academy and Milne's High catchment area is the river. There aims to be a consistent approach to the delineation of the catchments by making the primary and secondary school zone boundaries the same, eliminating split catchment areas. (PW)
Q	We will have to submit a placing request to attend the same school as our neighbours but we will not be provided with free transport even though our neighbours will?
A	Yes, you can submit an out of zone placing request but free transport will not be provided. (PW)
Q	If children currently attend a primary school that is out of zone, will they be able to attend that ASG secondary school?
A	Yes, they should be able to attend the ASG secondary school. The revised



	Admissions Policy gives higher priority to those who have attended ASG primary schools and have older siblings who attend this secondary school. (PW)
Q	For those children currently attending an out of zoned primary school and who will then attend the ASG secondary school, will they still receive free transport?
A	All eligible children currently attending a ASG primary school will continue to receive transport if they transfer to what is their current zoned secondary school; the council will honour the obligation to provide transport. (PW)
Q	The route from the Fairfield area through the natural reserve trail is not a safe route to school during the winter months for primary and secondary school pupils.
A	During the 2015 rezoning consultation this was reviewed, however due to capacity issues at West End primary school it was identified rezoning the Fairfield area to West End primary was not a feasible option. The current roll at West End primary school would need to be reduced to make this possible. If we limited the out of zone placing requests at West End primary school over the next few years, it may then be possible to amend the Fairfield catchment area to West End primary school. (PW)
Q	How will the proposed implementation dates affect the nursery transition process if there are no guarantees that placing requests will be accepted?
A	The only reason a placing request would be refused is due to capacity issues of that specific school, which in the area of Lhanbryde is not an issue. Placing request are confirmed by the end of April enabling transition to take place. (PW)

- Discussion held on the current and future capacity of Seafeld primary school.
- Discussion held on school transport and the council's policy was clarified.
- Discussion held on the impact of proposed future Military families moving to the area and the impact on the school roll.

Paul Watson concluded the meeting by thanking those in attendance for coming along and participating.



Moray Council

School Catchment Area Amendments Consultation

Comments / Enquiries Received

21 November 2016 - 20 January 2017

Please note that content within is unedited (except for the removal of personal data)

Correspondence

School Rezoning Proposal: Response from the City and Royal Burgh of Elgin Community Council

Background

The Moray Council has conducted a statutory consultation exercise on its proposals to vary the zones (catchment areas) of Bishopmill, Lhanbryde, Linkwood, Seafield and West End Primary Schools, Elgin Academy, Elgin High School, and Milne's High School.

A public meeting was held by the Council to explain its proposals. The Community Council was represented by two of its members at the meeting in Elgin Town Hall on the evening of 30th November 2016.

The Community Council has tried to look at the overall picture as it affects Elgin, and to look at the greatest overall benefit, while recognising that some parents and their children may well be adversely affected by the proposals.

Merits of the Proposals

The Community Council recognises that the zones have not been altered for many years and this tidying up exercise is necessary. The Community Council believes that one of the drivers of any such rezoning must be to ensure that those who live in Elgin have the right to send their children to a school based in Elgin, and this is particularly important as Elgin expands both to the north and to the south, over-spilling outwith its current boundaries.

- (a) Rezone the geographical area which lies to the north of the A96 and to the west of the River Lossie from Lhanbryde Primary School to Seafield Primary School.

The Community Council supports this proposal.

The Community Council recognises that there may be at least one family adversely affected by this proposal in that they will now be zoned differently from their immediate neighbours, due to them living on the opposite side of the river. The Community Council asks that the Council treats their circumstances with due sensitivity and that every effort be made to allow the affected children to use the bus the neighbouring children use to get to Lhanbryde Primary, even though the family will have no absolute right to access it.

- (b) Rezone an area with postcode IV30 6UH (Sheriffmill Road) from West End Primary to Bishopmill Primary.

The Community Council supports this proposal.

- (c) Rezone part of Lhanbryde catchment area including the Hallowood Road, Troves area to Linkwood Primary.

The Community Council supports this proposal. The Community Council made this suggestion in its response dated 24th March 2016 to the consultation over the Council's Secondary School Rezoning Proposal, so is pleased to see that the suggestion has been adopted.

- (d) Rezone all of the revised Linkwood Primary School catchment area from Elgin Academy and Milnes High School to Elgin High School.

The Community Council supports this proposal, as this point was behind our thinking in the previous consultation response referred to above.

17th January 2017

Social Media

No correspondence received

Survey Monkey Comments

1	Include postcode IV30 5NZ in Lhanbryde Primary
2	Miss out curves/meandering in river and go by postcodes. IV30 5NZ to be zoned for Lhanbryde
3	This is causing me stress, I already have 1 daughter which last year was catchment area for Elgin Academy, now my other daughter has Elgin High, due to this I cannot get her free bus pass to school
4	I find it very interesting the amount of work the council put into the rezoning process when at the end of the day the councillors can overturn any of the catchment areas and force a school to take pupils from out with the catchment. This year Bishopmill primary school filled both primary 1 classes with in zone pupils to then be told by councillors to take 8 extra from other catchment areas which in turn made one class have 33 pupils. Myself and others have brought this to the attention of council employees concerned but my point here is really, why bother to have catchment areas at all if you are not going to bother sticking to them for all school admissions? This problem is not going to go away and I do feel, as one of your councillors quoted in a newspaper, certain parents are just being snobby and picky about schools and at the end of the day if it is such a high priority for them to put their child to a certain school then they should aim to live nearby said school. I look forward to hearing from those concerned at the consultation next week
5	Lhanbryde P4-7 Pupil Parliament members met with HT to discuss proposals on 13 January 2017. Children viewed the maps which were very clear. They thought that on the map it looked odd having the secondary school catchments proposals as they were and the new proposals made more sense. They asked questions about being able to still go to Elgin Academy if they wanted as some had siblings attending there and parental choice was explained. Again for the primary proposals they saw from the maps that these areas did not have a lot of houses and wouldn't be a lot of children affecting our roll; they could see these areas were closer to Elgin.

Stakeholder Responses

Bishopmill Primary School

Info went out to parents in a newsletter. All staff given opportunity to respond; direct consultation with one family who would be affected; pupil council consulted too (completed survey received). Hopefully you have received individual responses.

Lhanbryde Primary School

The head teacher confirmed that the school had consulted with staff, pupils and parents.

Extract of Staff meeting held 17 November 2016

GR shared documentation with staff on Moray Council's school catchment area amendments. Staff agreed to the proposal. They felt each proposal made sense and new school would be easier to reach and would have shorter journey times. The areas for us also haven't had many children/currently have many children attending our school. Those living in the Troves area have usually put in placing requests to go to Elgin schools anyway.

Extract of Parent Council meeting held 17 January 2017

Parents present, viewed the papers and the maps and discussed the proposals. All agreed to the proposals affecting Lhanbryde Primary and Milne's High School.

Linkwood Primary School

The head teacher confirmed that all statutory consultees were contacted and that the consultation documents were made available to all stakeholders. Stakeholders could respond individually.

Seafield Primary School

The head teacher confirmed that all statutory consultees were contacted and that the consultation documents were made available to all stakeholders. Stakeholders could respond individually.

West End Primary School

The head teacher confirmed that all statutory consultees were contacted and stakeholders could respond individually.

Elgin Academy

In terms of parents, we made the documentation available on the school website. All staff and pupils were made aware of the consultation and where to access the information. Information was sent directly by Moray Council to the Chair of the Parent Council for further distribution. (There was not a meeting of the PC scheduled for the period of the consultation). Stakeholders could respond individually.

Elgin High School

The consultation was intimated on the school website and had a link to it on the school Facebook page. The head teacher also sent the information to staff via email; no responses received. Stakeholders could respond individually.

Milne's High School

The head teacher confirmed that the school had consulted with staff, pupils and parents and that the Survey Monkey link had been provided for any stakeholder who wished to submit a response.

Milne's Parent Council: Extract from Meeting Minutes held 16 January 2017

Ends 20 January 2017. Previously discussed at PC. If not already done so, PC members should go onto MC website and complete survey monkey. All members happy with the consultation as it means more pupils for Milne's High - although there will still be parental choice. HMI inspectors visiting school on 31st January at 11.30 a.m. to speak with PC members to ensure we have been consulted about the proposals.
