

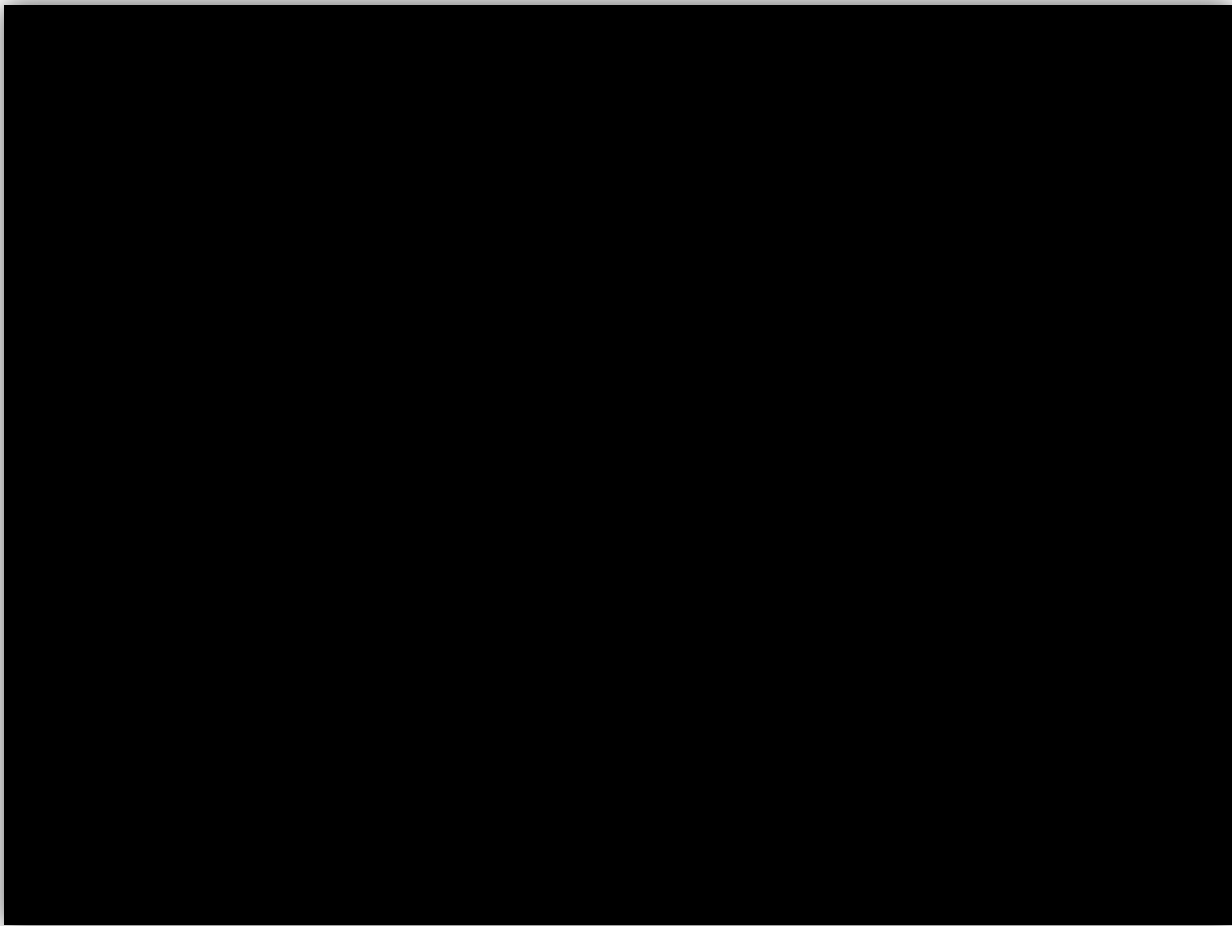
Moray Early Learning & Childcare (ELC) Expansion

Pre-consultation Information Sessions

Phase 2



moray
council



Early Learning & Childcare Expansion


Scottish Government Vision

Quality – activities that educate and nurture our children, giving them the best start in life

Flexible – services that suit parents/carers and children's needs

Accessible – for all eligible children in Moray

Affordable - for all families in Moray



Early Learning & Childcare Expansion

Currently

- Moray Council is required to provide 600 hours of early learning & childcare to three and four year olds and eligible two year olds
- 23 local authority nurseries (new one opened in August 2018), 36 funded providers (private and third sector nurseries) and childminders (2 year olds only)
- Term-time only (3 hours 10 minutes per day)

Early Learning & Childcare Expansion

By August 2020

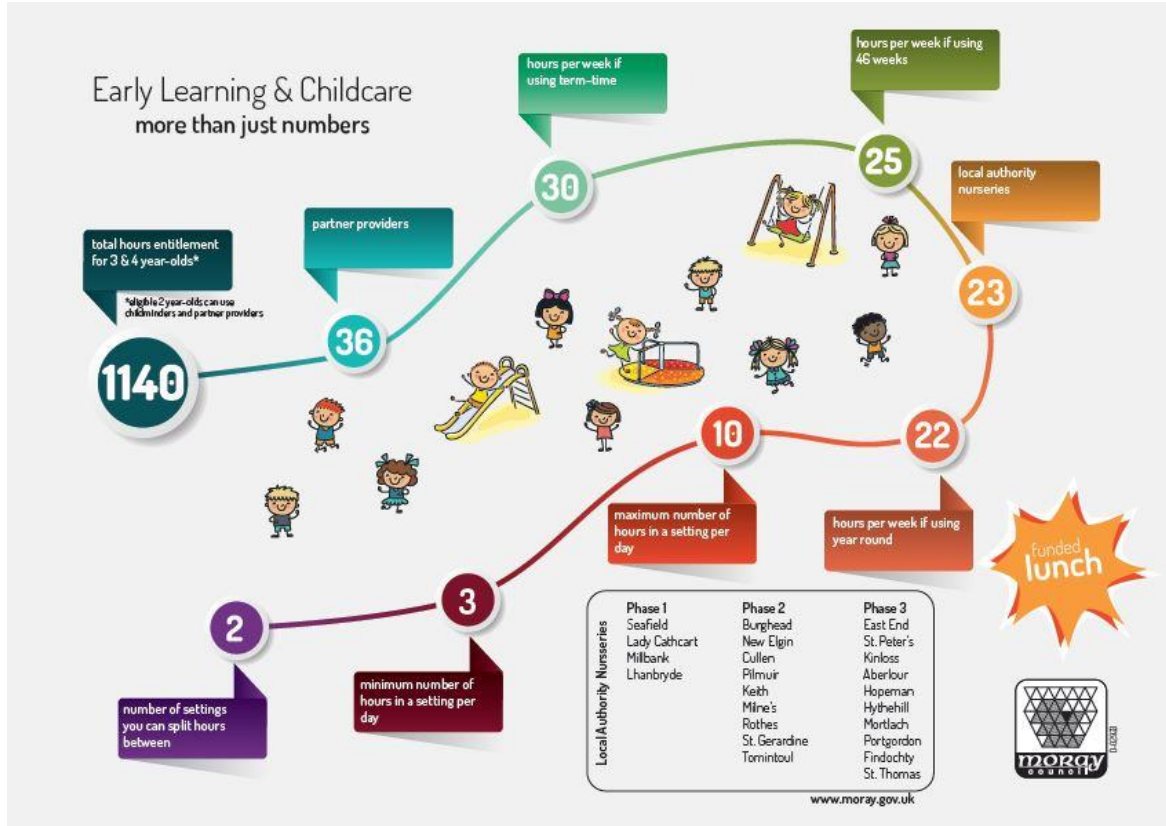
- Moray Council required to provide 1140 hours of early learning and childcare to three and four year olds and eligible two year olds.
- Available 50 weeks per year:
 - 22 hours per week (all year)
 - 30 hours per week (term-time only)

[Moray Council nurseries will be open 8am to 6pm 50 weeks per year **if required**]

Moray's ELC Offer

Not before 7am
or after 7pm
within nursery
settings
(childminder
sessions can be
evenings)

Moray Council
nurseries will
be managed by
a Nursery
Manager



Nursery
refurbishment/rebuild
programme ongoing

In future,
parents/carers could
pay for additional hours
beyond their funded
entitlement if those
hours are available

Phasing

- By Postcode Area in line with SIMD – sustainable and manageable introduction
- **August 2018** – postcodes in Buckie, Elgin, Forres, Lhanbryde started to receive 1140 hours (around 200 children eligible)
- **August 2019** – more postcodes become eligible
- **August 2020** – everyone will have 1140 hours
- Phasing eligibility can be confirmed using our postcode checker online: www.moray.gov.uk – learning and education – early learning & childcare – information for parents – eligibility for increased ELC provision

1140 Providers* – Phase 2 (*subject to change)

YR = Year Round
TT = Term Time

Moray Council Nurseries	Moray Council Nurseries	Partner Providers	Partner Providers	Partner Providers
Lady Cathcart – Buckie (phase 1 –YR)	Keith (phase 2 - TT)	Magic Roundabout (Elgin)	Ark Childcare (Mosstowie)	Jack and Jill Nursery School (Elgin)
Millbank – Buckie (phase 1 –TT)	Milnes (phase 2 - TT)	Moray College Nursery (Elgin)	Bishopmill Pre-School Centre (Elgin)	Liberty Kids (Elgin)
Lhanbryde (phase 1 - YR)	Roths (phase 2 - TT)	VIP Childcare (Elgin)	Curious Minds (Elgin)	RAF Lossiemouth Childcare Centre
Seafield – Elgin (phase 1 - YR)	St Gerardine (phase 2 - TT)	Spring Childcare (Kinloss)	Rainbow Childcare and Education (Forres)	Garmouth & Kingston Pre-school Group
Burghead (phase 2 - TT)	New Elgin (phase 2 - TT)	East Beach Nursery & Little Learners (Lossiemouth)	Cullen Playcentre	Fochabers Nursery
Cullen (phase 2 - TT)	Tomintoul (phase 2 – TT)	Stramash Outdoor Nursery	Portessie Playgroup	Mosstodloch Nursery
Childminders – two yr olds only	Pilmuir (phase 2 – YR)	Earthtime (Duffus)	Noah’s Ark (Forres)	

Registration

October/November 2018

- Staff info sessions – in phase 2 nurseries
- Parent/Community info sessions – detailing expansion and pre-consultation events

January 2019 (w/c 14th)

- 3&4 year olds – take registration form to preferred provider
- 2 year olds – send registration form and JCP stamped form to Education & Social Care Department, Moray Council (eligibility criteria can be found online)
- 600 hours – register for a morning or afternoon, term-time session but can be used flexibly (we're still working on what flexibility will look like)
- 1140 hours (phase 1 & 2 nurseries) – choose term-time or year round on form if available; choose days and times required from those provided

Post Registration

- When offering funded early learning and childcare places, the criteria to prioritise eligibility are:
 - Child with existing attendance at the centre
 - Child resident in secondary catchment area and sibling at centre
 - Child resident in secondary catchment
 - Child with Co-ordinated Support Plan (CSP), and/or assessment by the Education Authority
 - Child outwith secondary catchment area and sibling at centre
 - Child outwith the secondary catchment area
- Priority within any of the six categories above, where it is necessary to be determined, will be given to older children first and then to those resident closest (distance being calculated by the straight line method)
- Confirmation of places/hours will be communicated by **Easter holidays**

Current situation



Partner Provider

- Managed by Nursery Manager
- Provision for 2,3 & 4 year olds
- Wraparound/ year round care
- Some flexibility
- Lunches
- Transition into schools in area
- Meet quality standards to retain partner provider status



School Nursery

- Managed by Head Teacher
- Provision for 3 & 4 year olds
- AM and PM sessions (no flexibility)
- Term-time only
- Transition into attached school

August 2020



Funded Provider

- Managed by Nursery Manager
- Provision for 2,3 & 4 year olds
- Wraparound/ year round care
- Lunches
- Flexibility
- Transition into schools in area
- Required to meet national standard for ELC



Funded Provider

- Managed by Nursery Manager
- Provision for 2,3 & 4 year olds
- Wraparound/ year round care
- Lunches
- Flexibility
- Transition into schools in area
- Required to meet national standard for ELC

How do we provide the service in the future?

THINK
DIFFERENTLY



How do we make best use of space?



Modern nursery standard

- Large play space
- Indoor/Outdoor
- Family room
- Changing space
- Manager's office
- Breakout/Rest spaces

How do we make best use of our resources?



Quality for all

- Quality Management
- Quality staff
- Quality environments
- Quality experiences

Sustainable Services



- Initial pre-consultation (questionnaire)
- Decision in early 2019 re: proceeding to formal consultation

ELC Expansion Project Team

- **Joanna Shirriffs** – *Senior Project Manager*
joanna.shirriffs@moray.gov.uk or 01343 563 499
- **Karen Donaldson** – *Education & Social Care Business Support Team Leader*
karen.donaldson@moray.gov.uk or 01343 563 916
- **Pearl Gray** – *Project Catering & Janitorial Officer*
pearl.gray@moray.gov.uk or 07528 973 491
- **Kirsty Boyle** – *Communications & Engagement Officer*
kirsty.boyle@moray.gov.uk or 01343 563 548
- **Kara Morrison** – *HR Officer*
kara.morrison@moray.gov.uk or 01343 563 884

Questions?

