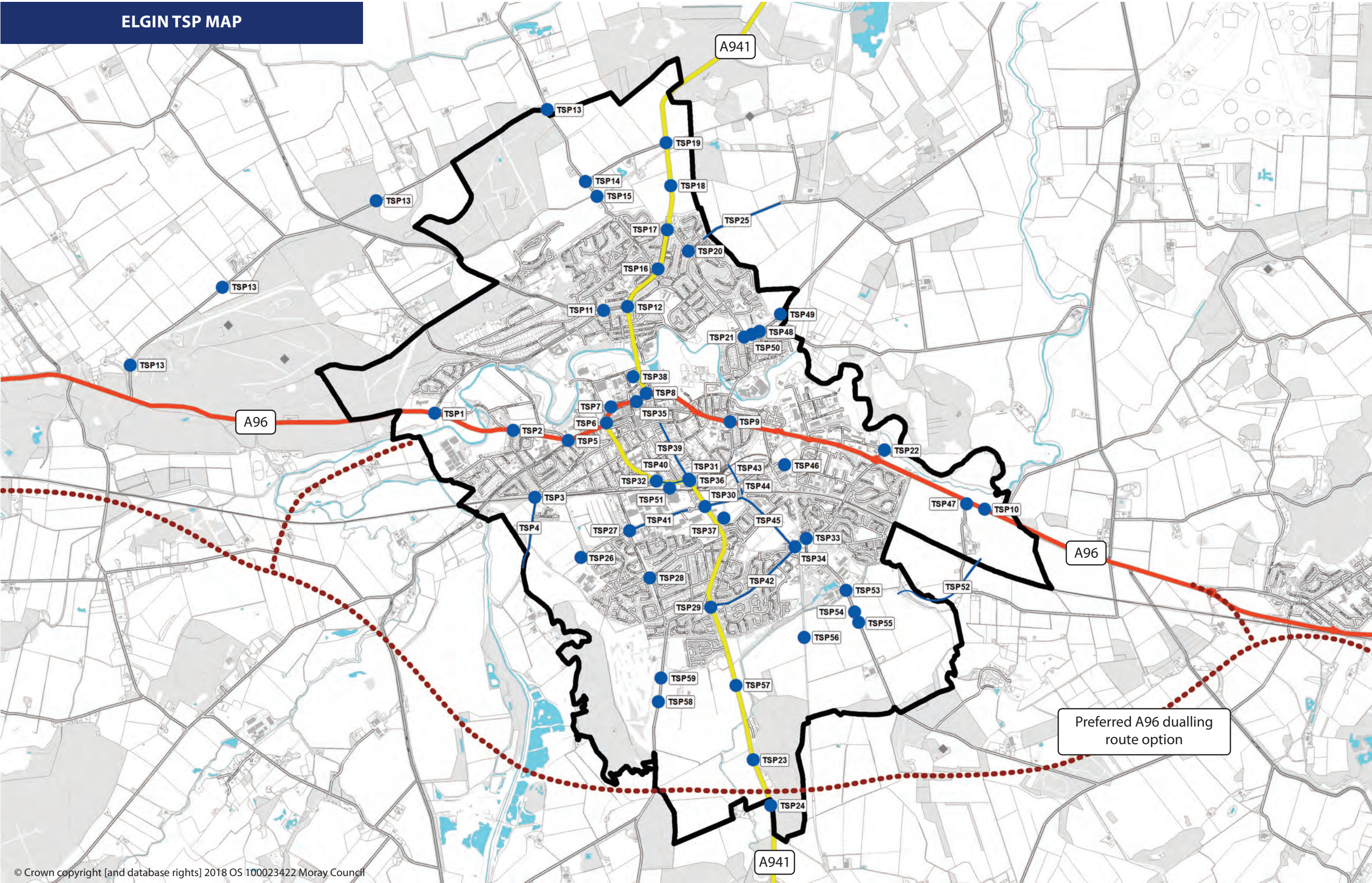


ELGIN TSP MAP

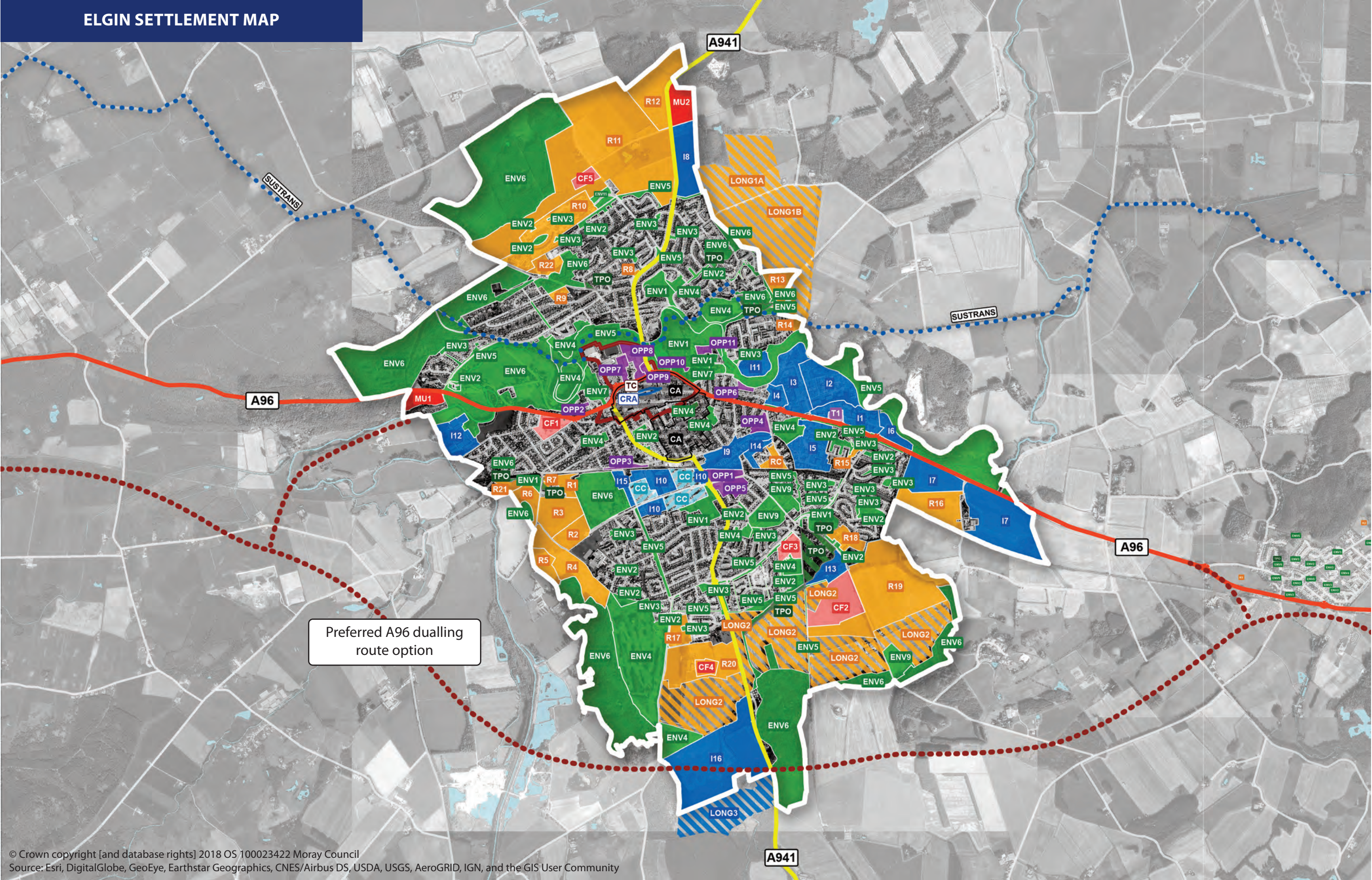


© Crown copyright [and database rights] 2018 OS 100023422 Moray Council

| | | | | | | | |
|--------------|---|--------------|--|--------------|--|--------------|--|
| TSP1 | A96/Morrison Road junction improvement including MU1 Riverview access | TSP19 | A941 Lossiemouth Road/Myreside Road closure of junction to vehicular traffic in association with Findrassie development | TSP34 | Reiket Lane/Linkwood Road/Thornhill Road junction – impact on junction from development sites to the south of Elgin needs to be considered in Transport Assessments | TSP45 | Linkwood Road cycle lanes (ETS Scheme – I4H) – impact on this route from development sites needs to be determined in Transport Assessments to inform level of developer obligation |
| TSP2 | A96/Wittet Drive junction – impact on this junction from development sites needs to be considered in Transport Assessments | TSP20 | Lesmurdie Road/Linksfield Road – junction improvements associated with development in north Elgin | TSP35 | Elgin bus station safeguard, potential re-location (Part of Elgin City for the Future and ETS Scheme - M3B) | TSP46 | Pinefield to East End Primary School active travel route (ETS Scheme – I4K) |
| TSP3 | Bilbohall Road/Mayne Road/Fleurs Road/Wards Road improvements to railway bridge and junctions to serve Bilbohall development | TSP21 | Lesmurdie Road/Calcotts Road – potential junction improvements associated with development in north Elgin | TSP36 | Station Road and Maisondieu Road pedestrian crossing improvements (ETS Scheme – M1B) – impact on this route from development sites needs to be determined in Transport Assessments to inform level of developer obligation | TSP47 | A96/Moss of Barmuckity junction closure to vehicular traffic once new A96 roundabout to access Barmuckity has been completed |
| TSP4 | Bilbohall Road widening to serve Bilbohall development | TSP22 | Linkwood Industrial Estate pedestrian and vehicular access to be provided between site I1 and I6 | | | TSP48 | Calcots Road/Pitgaveny Road junction improvements required to development to the east of Elgin |
| TSP5 | A96/South Street/Pluscarden Road junction – impact on this junction from development needs to be considered in Transport Assessments | TSP23 | A941 Rothes Road – new junction to serve Burnside of Birnie | TSP37 | Market Drive connection from site OPP5 to existing cul-de-sac | TSP49 | Pitgaveny Road widening and provision of footway/cycleway in association with development to the east of Elgin |
| TSP6 | A96/A941 Hay Street/High Street junction – impact on this junction from development sites needs to be considered in Transport Assessments | TSP24 | A941 Rothes Road – new junction to serve Burnside of Birnie | TSP38 | Elgin Lorry Park – potential re-location | TSP50 | Calcotts Road/Pitgaveny Road footway/cycleway provision from development to existing infrastructure at Lesmurdie Road |
| TSP7 | A96/Haugh Road/Tesco access junction – impact on this junction from development sites needs to be considered through Transport Assessments | TSP25 | Linksfield/Caysbriggs Road – widening and upgrading with footway/cycleway provision to serve development at LONG1A and LONG1B | TSP39 | Moss Street – convert to one-way, widen footways, provide cycle lanes (ETS Scheme – I2A) – impact on this route from development sites needs to be determined in Transport Assessments to inform level of developer obligation | TSP51 | Railway Station |
| TSP8 | A96/A941 Cumming Street junction – impact on this junction from development sites needs to be considered in Transport Assessments | TSP26 | Edgar Road extension to form primary access to Bilbohall development | | | TSP52 | New road link with footway/cycleway provision from Elgin South to Barmuckity |
| TSP9 | A96/Pansport Road/Maisondieu Road junction – impact on this junction from development sites needs to be considered in Transport Assessments | TSP27 | Edgar Road/The Wards/Glen Moray Drive – junction improvements associated with Bilbohall development and site LONG2 | TSP40 | Station Road cycle lanes (ETS Scheme – I4F) – impact on this route from development sites needs to be determined in Transport Assessments to inform level of developer obligation | TSP53 | Linkwood Road replacement bridge over Linkwood Burn with footway/cycleway provision |
| TSP10 | A96/Barmuckity – new footway/cycleway to connect development to Elgin | TSP28 | Glen Moray Drive/Springfield Road/Sandy Road – potential junction improvements associated with development to the south of Elgin | TSP41 | Edgar Road pedestrian crossing improvements (ETS Scheme-M1A) – impact on this route from development sites needs to be determined in Transport Assessments to inform level of developer obligation | TSP54 | Linkwood Road widening with footway/cycleway on both sides of the road from Reiket Lane to southern extent of Elgin South (LONG2) |
| TSP11 | Morrison Road/Duffus Road junction improvements required to serve development | TSP29 | A941 Main Street/Birnie Road/Thornhill Road junction – impact on junction from development sites to south of Elgin needs to be considered in Transport Assessments | | | TSP55 | Linkwood Road – new accesses to serve Elgin South development |
| TSP12 | A941 North Street/Morrison Road junction improvements required to serve development | TSP30 | A941 New Elgin Road/Edgar Road/Linkwood Road junction (ETS Scheme – I3A) – impact on junction from development sites needs to be determined in Transport Assessments to inform level of developer obligation | TSP42 | Thornhill Road pedestrian crossing improvements (ETS Scheme – M1D) – impact on this route from development sites needs to be determined in Transport Assessments to inform level of developer obligation | TSP56 | Core paths EG06 and EG60 – upgrade to provide surfaced and lit pedestrian and cycle access to Elgin South development |
| TSP13 | Westerfolds/Covesea Road junction and road improvements required in association with Findrassie development | | | TSP43 | New road link – Ashgrove Road to Maisondieu Road (ETS Scheme – I1B) – impact on A941 New Elgin Rail Bridge from development sites needs to be determined in Transport Assessments to inform level of developer obligation | TSP57 | A941 Rothes Road – new junction to serve Elgin South development and provision of footway/cycleway to connect development to existing network and provision of bus laybys. |
| TSP14 | Myreside Road/Covesea Road junction and road improvements required in association with Findrassie development | TSP31 | A941 New Elgin Road/Station Road/Maisondieu Road junction (ETS Scheme – I3A) – impact on junction from development sites needs to be determined in Transport Assessments to inform level of developer obligation | | | TSP58 | Birnie Road – new junctions to serve Elgin South development, including LONG2 |
| TSP15 | Covesea Road – new junction required in association with Findrassie development | | | TSP44 | New cycle link over railway line at Ashgrove Road (ETS Scheme – I4B) – impact on A941 New Elgin Rail Bridge from development sites needs to be determined in Transport Assessments to inform level of developer obligation | TSP59 | Birnie Road widening to serve Elgin South development and provision of footway/cycleway to connect development to existing network |
| TSP16 | A941 Lossiemouth Road/Covesea Road junction improvements required in association with Findrassie development | TSP32 | A941 Hay Street/Wards Road junction – impact on this junction from development sites to the south of Elgin needs to be considered in Transport Assessments | | | TSP60 | A96 Route of Proposed Dualling |
| TSP17 | A941 Lossiemouth Road/Lesmurdie Road junction improvements required in association with Findrassie development | TSP33 | Reiket Lane/Linkwood Road junction improvements associated with development to south of Elgin | | | | |
| TSP18 | A941 Lossiemouth Road – new junctions to provide access for Findrassie development | | | | | | |

Note: Additional TSP’s may be identified as a result of Traffic Modelling to be undertaken this includes scenarios with and without A96(T) dualling scheme.

ELGIN SETTLEMENT MAP



© Crown copyright [and database rights] 2018 OS 100023422 Moray Council
Source: Esri, DigitalGlobe, GeoEye, Earthstar Geographics, CNES/Airbus DS, USDA, USGS, AeroGRID, IGN, and the GIS User Community

ELGIN GREEN NETWORK MAP

Promote recreational access to the countryside

Central green spine east to west as focus of Findrassie development with green connections to north to woodland and the countryside

East-West green corridor connecting to River Lossie Corridor








Create woodland edge and landscaped framework for industrial development at Barmuckity

Create character, provide a high quality landscape setting and well connected greenspaces at Bilbohall

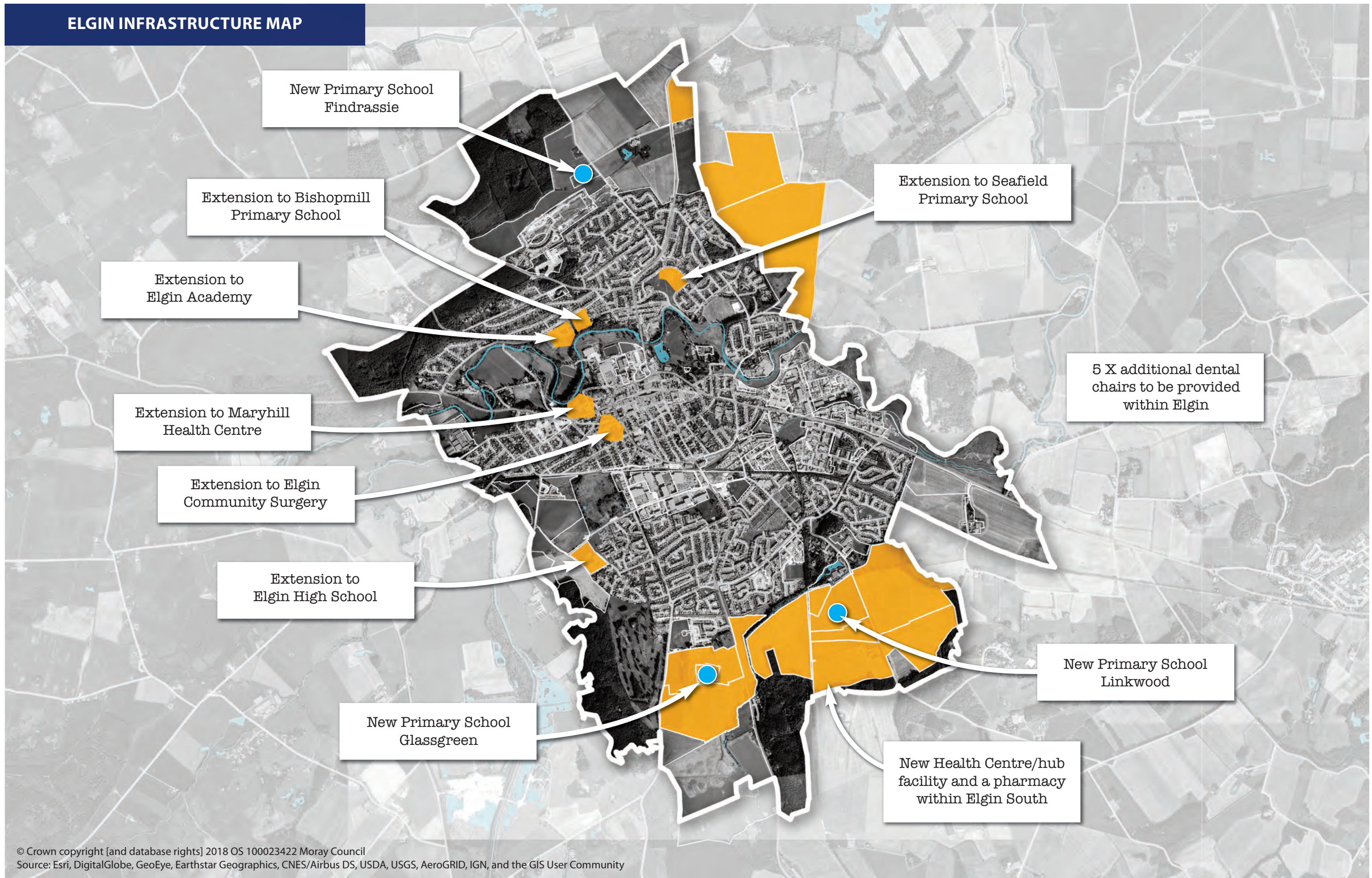
Create effective landscape framework to provide a setting for industrial uses at Burnside of Birnie and to positively manage pipeline corridor and areas at risk from flooding for biodiversity, recreation and access

Create character and high quality connected greenspace including a linear park connecting through the site to a central park within Elgin South Masterplan Area

KEY

-  Create High Quality Attractive Gateways
-  Existing Greenspace
-  Proposed Green Network
-  Connecting People to the Wider Countryside
-  Open Space
-  Feature Avenue Planting
-  Neighbourhood Parks

ELGIN INFRASTRUCTURE MAP



© Crown copyright [and database rights] 2018 OS 100023422 Moray Council
 Source: Esri, DigitalGlobe, GeoEye, Earthstar Geographics, CNES/Airbus DS, USDA, USGS, AeroGRID, IGN, and the GIS User Community

BILBOHALL MASTERPLAN



FINDRASSIE MASTERPLAN



ELGIN SOUTH MASTERPLAN

