

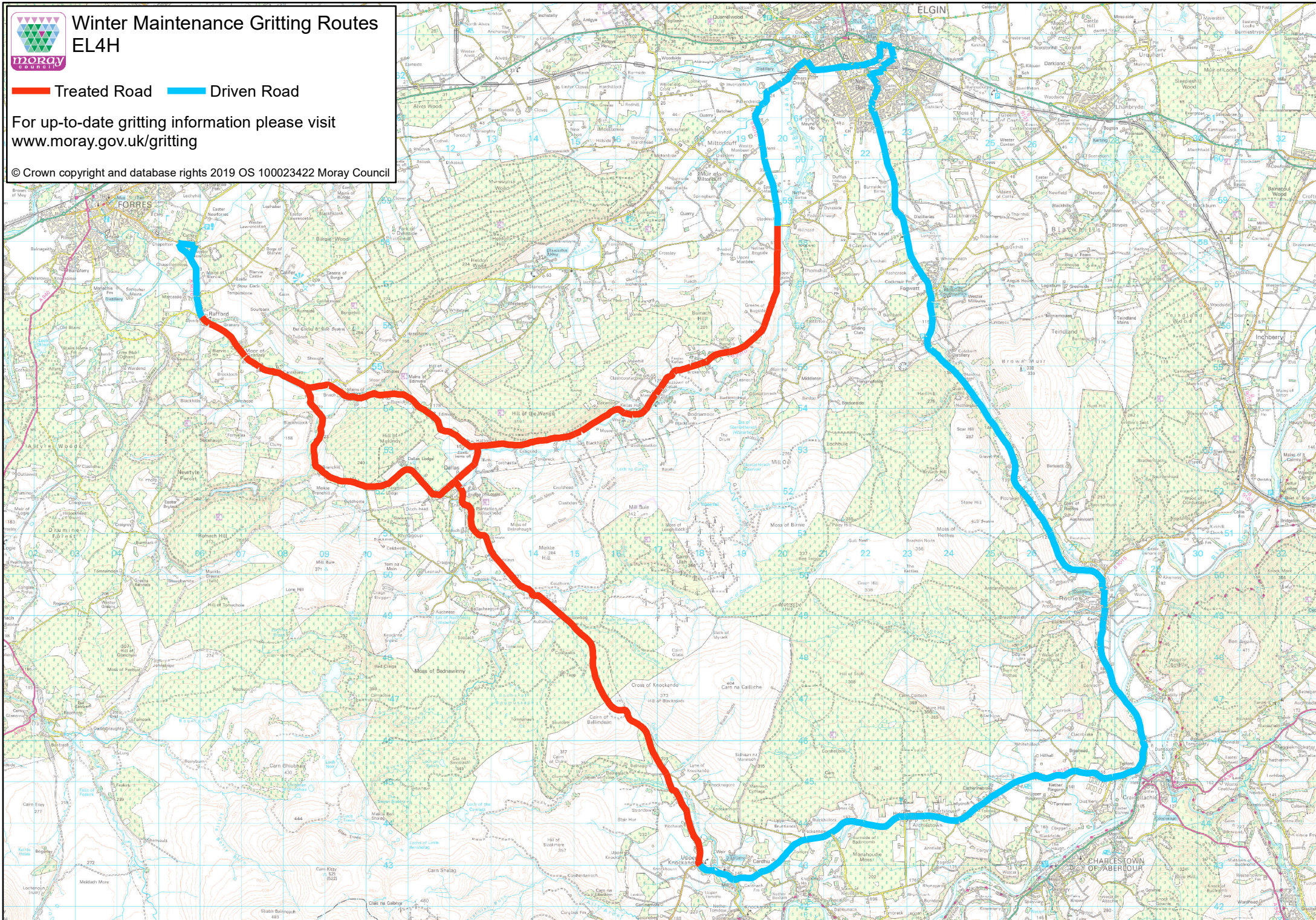


Winter Maintenance Gritting Routes EL4H

— Treated Road — Driven Road

For up-to-date gritting information please visit
www.moray.gov.uk/gritting

© Crown copyright and database rights 2019 OS 100023422 Moray Council



**MORAY COUNCIL
ROADS MAINTENANCE
WINTER SERVICE OPERATIONAL PLAN**

APPENDIX B

GRITTER ROUTES (VARIATIONS)

<u>EL4H - Dallas/Knockando</u> (H parts of EL4) <i>Revised - 01/10/2020</i>	Duration (hh:mm)	Treat (miles)	Drive (miles)	Total (miles)
Leave Ashgrove Depot	00:00			0.0
Drive A96T, Maisondieu Rd, Station Rd, Wards Rd, Wittet Dr, B9010 to C2E Jct. (Cloddach)	00:11		4.6	4.6
Treat B9010 from C2E Jct. (Cloddach) to C12E Jct. (Hatton)	00:30	6.5		11.1
Treat C12E from B9010 Jct. (Hatton) via Dallas and Branchill to B9010 Jct. (Little America)	00:43	4.5		15.6
Treat B9010 from C12E Jct. (Little America) to C14E Jct. in Rafford	00:51	2.8		18.4
Drive B9010, U94E, C27E, back to C12E Jct. (Little America)	01:00		4.2	22.6
Treat B9010 from C12E Jct. (Little America) to C12E Jct. (Hatton)	01:09	3.2		25.8
Drive C12E, via Dallas, to C13E Jct.	01:11		0.7	26.5
Treat C13E from Dallas to B9102 at Knockando	01:32	7.3		33.8
Drive via B9102 & A941 to Ashgrove Depot	02:12		19.7	53.5
Totals -	02:12	24.3	29.2	53.5

Note : Treat round all roundabouts, except those on A96(T)