

REPORT: FALCONER MUSEUM & STORE, VISIT 27th July 2022

Museum Store

GROUND FLOOR

Please see the attached environmental report – the Tiny Tag sensor data was downloaded but the units require calibration to ensure accuracy of the readings.

As per previous recommendations for this area:

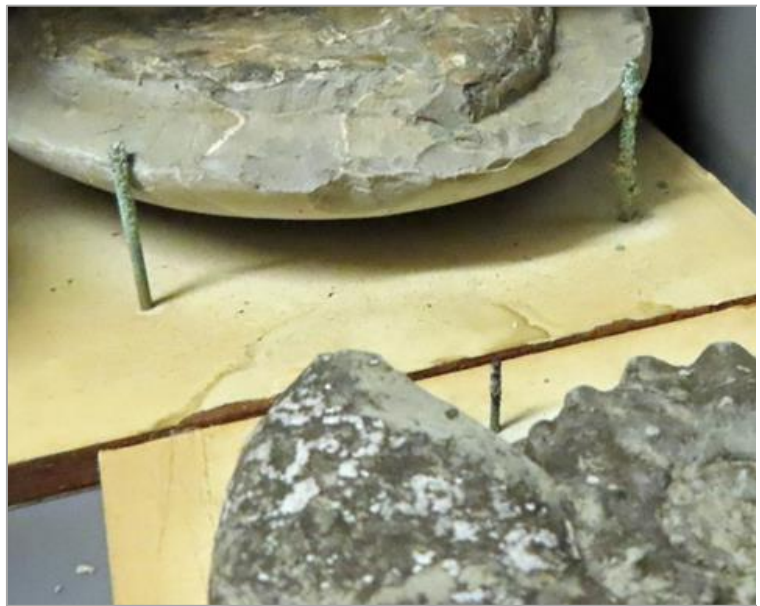
- Marble statue of 'Shakespeare Wood Spirit' was given a Tyvek dust cover.

Current visit: The ground floor store was checked, selected geology / palaeontology trays were examined. Issues noted include:

- **Stack E: Tray 2:** corrosion of several of the copper alloy pins used to secure the palaeontology specimens to cards. These were older specimens on their original display/data cards.
- **Stack D:** The bases of many of the storage trays had accumulations of dust and fragment debris as well as evidence of spider's webs and deceased spiders. In addition, there were the remains a larval case and adult beetle (deceased). The beetle was identified as a Two Spot carpet beetle (*Attagenus pelli*). Geological material is not susceptible to insect pests, but it is still a concern as there are many other items in the store that could be vulnerable. This looks to be a single occurrence, no other beetles were found. During the check.



Drawer E2



Corroding Cu alloy pins



Larval case and adult, very faint spots visible.

- **Tray D:18/5/2** A couple of the specimens appears to have salt crystallisation and pyrite decay, there is some fragmentation and loss to affected areas.



Affected specimens D: 18/5/2



Efflorescence and pyrite decay

There were at least two specimens with obvious pyrite decay having a grey, white and yellow (sulphur) crystalline deposit as well as fine fibrous crystalline efflorescence. This type of deterioration in geological and palaeontological specimens can be influenced by the storage environment, especially by wood or wood-based materials and by high relative humidity. Chemical conservation treatments are on the whole not very successful. The best approach is to reduce the humidity levels in the immediate environment. This will not stop the deterioration but may help to slow it down.

- Some of the chairs still showed presence of woodworm, there was no significant dust accumulation. Given that the preceding period between May and July is the emergence period for common woodworm in the north it appears that infestation is not currently active. This will continue to be monitored. Chairs will still require treatment as a preventive measure.

ACTION: Next visit

- Remove efflorescence and loose powdery pyrite decay from affected specimens, separate and place in a low humidity environment with silica gel.
- Line the trays with plastazote softening to reduce physical damage from contact.
- Freeze or treat chair for wood worm

GROUND FLOOR FOYER AREA OPPOSITE OFFICE

Large incised stone in case. Acc. No. 1992-16

The sandstone may be developing salt efflorescence, there is extensive white staining which may indicate salt/ moisture movement within the fabric of the stone, we will monitor this on future visits to check. The surface of stone did not appear to be friable or suffering loss. The staining is a pre-existing feature, but on this visit, it appeared to be more noticeable/extensive. The stone is displayed in a wooden case with glazed front, not in direct contact with the floor.



1992-16

**FIRST FLOOR STORE**

A walk-through check was made for all the shelving bays.

Three pheromone lure traps for flying clothes moths are located as follows:

- Trap 1 hung on the art rack the end of Bay 2, (Textiles)
- Trap 2 next to the art racks opposite Bays 14 & 15 (Taxidermy)
- Trap 3 front end of the Bay 14.

Blunder traps are located the radiators at front and rear of store.

Trap Check 27/07/2022

Moth lures all clean, no evidence of flying clothes moth

Blunder traps, one dead spider

Visual check of the cased and open taxidermy in the front section of the store:

- **Case of Iridescent birds** – lots of old insect damage, does not look to have a current infestation but it is difficult to be sure.
- **Antelope** – dusty, hair breakage and loss due to embrittlement, old insect damage.
- **Case of Ducks** – Glass side panel (R) is loose and partially open. The ducks appear stable, no obvious pest issues, access is restricted, there are heavy items in front of the case.

There was no external evidence of dead adult insects in the traps or on surfaces near these objects.

Roller racking

Bays 1-5: General check, all are clean, no changes noted from the previous visit

- Please see the attached report from Richard Aitken regarding some of the volumes that may benefit from treatment
- Relocated a folded mayoral robe back onto the textile hanging rail (Bay2) re-united it with its cover/bag.

Bay 6: Silica gel for the Archaeological metalwork will be changed next visit to maintain 30-40% RH.

Bay 7: Selected tray check, approximately 20% checked. (23 bays each with 12 trays)

Mixed contents, mostly in good condition and well packed.

Bays 8 – 12: General check, all are clean, no changes noted from the previous visit. Randomised inspection of some of the closed herbarium boxes, on 12.2.2 and 12.2.3 all clean, good storage condition.

Bays 13, 14 & 15: Taxidermy specimens show no obvious signs of new insect activity.

Art Racks: The racks were pulled out and the frames/artworks checked. No new damage noted.

ACTION: Next visit

- Silica gel change required for the archaeological metalwork
- Specimens and shelving require basic housekeeping measures to remove dust accumulations.

FALCONER MUSEUM

Environmental data: Tiny tag T/RH sensor data was downloaded please see the attached environmental report

The Bronze age sword and a pendant from the archaeology case were collected for conservation treatment to stabilise some small areas of potential bronze disease.

Two of the annular brooches displayed in the case were placed on plastazote lined mounts.



Silver annular brooch



Copper alloy annular brooch

All the dressing up clothing was removed from the gallery, wrapped and placed in the museum freezer as a precautionary measure. No pest activity was noted in the museum.

ACTION: Next visit

- Remove the purple cloth display fabric currently under some of the archaeology, replace with inert materials - pastazote foam or clear polyester
- Take dressing up clothing out of the freezer and pack and store.

Jeanette Pearson ACR

High Life Highland Conservation Service

Inverness Museum & Art Gallery

Highland Folk Museum

27th July 2022