



Replacement Forres Academy

Site Selection - Existing Context & Consultation



Site Options

- 1 Roysvale Park
- 2 Lochyhill / Enterprise Park
- 3 Granttown Road

Schools

- 1 Forres Academy
- 2 Alves Primary School
- 3 Anderson's Primary School
- 4 Applegrove Primary School
- 5 Dallas Primary School
- 6 Dyke Primary School
- 7 Kinloss Primary School
- 8 Logie Primary School
- 9 Pilmuir Primary School

Community & Sports Facilities

- 1 Swimming Pool & Leisure Centre
- 2 Forres House Community Centre
- 3 Forres Town Hall
- 4 Forres Tennis Club
- 5 Forres Mechanics Football Club
- 6 Forres St. Lawrence Cricket Club
- 7 Forres Bowling Club
- 8 Grant Park Bowling Club
- 9 Forres Golf Club
- 10 Forres Squash & Fitness Club
- 11 Forres Area Soccer 7s
- 12 Forres Thistle Football Club

Healthcare & Emergency Services

- 1 Forres Health & Care Centre
- 2 Forres Community Fire Station
- 3 Forres Police Station

Travel Routes

- 1 Forres Train Station
- 2 National Cycle Route 1
- 3 The Dava Way
- 4 A96 Road
- 5 Granttown Road
- 6 B9010 Road

Parks & Green Spaces

- 1 Grant Park
- 2 Cluny Hill
- 3 Sanquhar Loch & Woodlands
- 4 Mannachie Park
- 5 Roysvale Park
- 6 Muiry, Newforres & Council Woods
- 7 Fleurs Park
- 8 Thornhill Playing Field
- 9 Pilmuir Playing Field
- 10 Mosset Burn Park
- 11 Bogton Road Park
- 12 Califer Park
- 13 Academy Playing Field
- 14 Loch Blairs & Woodland
- 15 Limekilns Wood
- 16 River Findhorn

Key

- Forres Settlement Boundary
- Forres Associated Schools Boundary
- Key Travel Routes

What are we consulting you on?

The Moray Council have engaged Hub North Scotland and a Design Team to start work on designs for a new Forres Academy.

One of the first steps is to decide where the building should go. From a longlist of five possible sites, three have been shortlisted as suitable locations for the new Forres Academy.

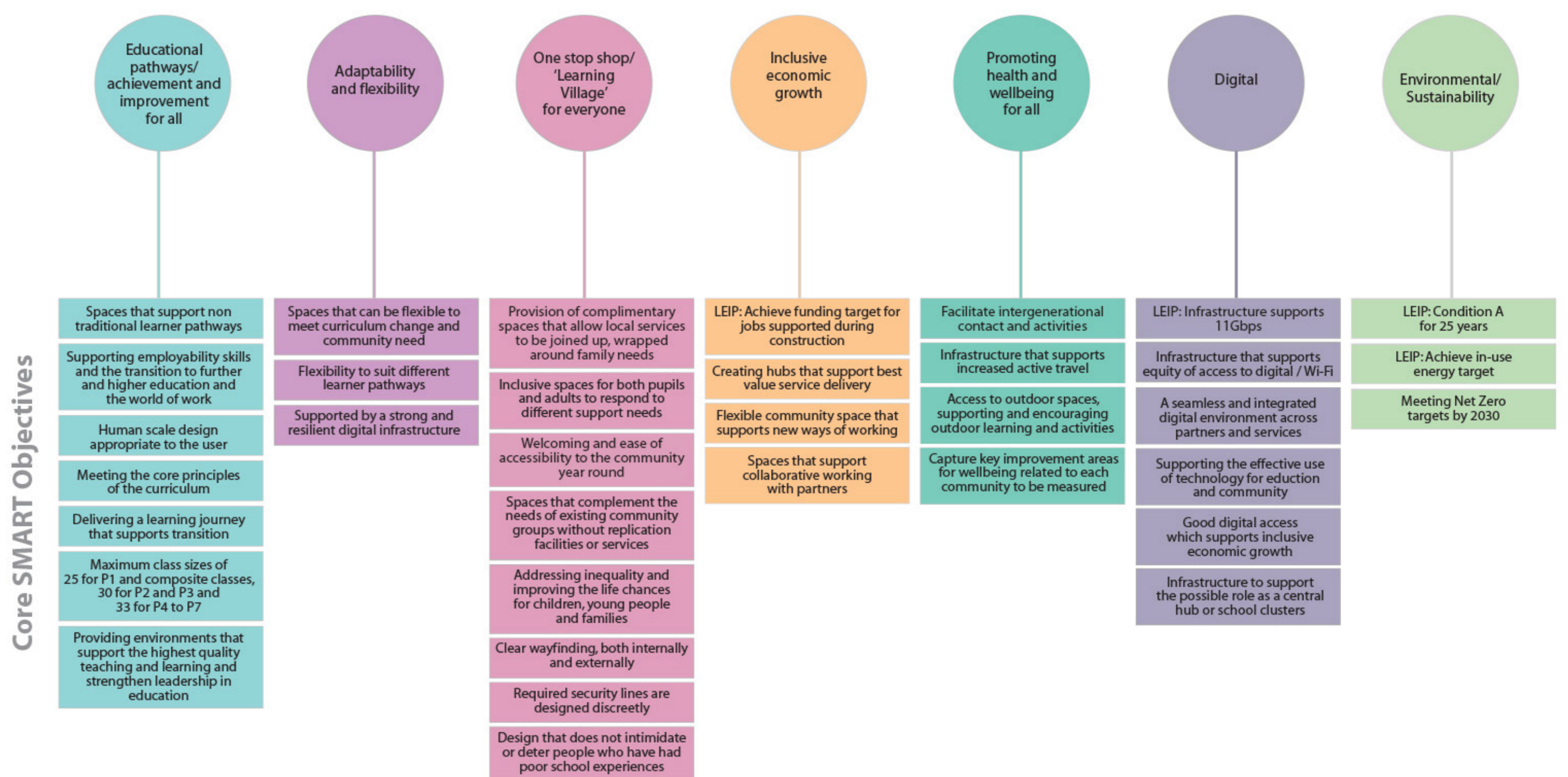
This consultation is to share those three options and present our 'Place Based Review' which assesses each options against the project's Strategy & SMART objectives.

What are Strategic & SMART Objectives?

Strategic and SMART Objectives are the core issues, goals and criteria that are most important to the project. These have been developed by The Moray Council as part of their strategic planning around future schools in Moray.

These criteria help everyone involved in the development of a new Forres Academy continually assess any decisions made to ensure they are in the best interest of the project.

Strategic Objectives



Scan me



Have your say...

Please feel free to look at these boards online and email comments directly to the address below, responses are welcome until 30th November 2023.

Online: www.moray.gov.uk/moray_standard/page_151261.html **Email:** learningestate@moray.gov.uk





Replacement Forres Academy

Site Selection - Roysvale Park



Schools

- 1 Forres Academy
- 3 Anderson's Primary School
- 4 Applegrove Primary School
- 9 Pilmuir Primary School

Community & Sports Facilities

- 1 Swimming Pool & Leisure Centre
- 2 Forres House Community Centre
- 3 Forres Town Hall
- 4 Forres Tennis Club
- 5 Forres Mechanics Football Club
- 6 Forres St. Lawrence Cricket Club
- 7 Forres Bowling Club
- 8 Grant Park Bowling Club
- 9 Forres Golf Club
- 10 Forres Squash & Fitness Club
- 11 Forres Area Soccer 7s
- 12 Forres Thistle Football Club

Healthcare & Emergency Services

- 1 Forres Health & Care Centre
- 2 Forres Community Fire Station
- 3 Forres Police Station

Travel Routes

- 1 Forres Train Station
- 2 National Cycle Route 1
- 3 The Dava Way
- 4 A96 Road
- 5 Granttown Road
- 6 B9010 Road

Parks & Green Spaces

- 1 Grant Park
- 2 Cluny Hill
- 3 Sanquhar Loch & Woodlands
- 4 Mannachie Park
- 5 Roysvale Park
- 7 Fleurs Park
- 8 Thornhill Playing Field
- 9 Pilmuir Playing Field
- 10 Mosset Burn Park
- 11 Bogton Road Park
- 13 Academy Playing Field

Key

- Proposed Site Boundary
- - - - - Walking Distances
- Bus Routes
- Key Travel Routes
- Forres Settlement Boundary



Scan me



Have your say...

Please feel free to look at these boards online and email comments directly to the address below, responses are welcome until 30th November 2023.

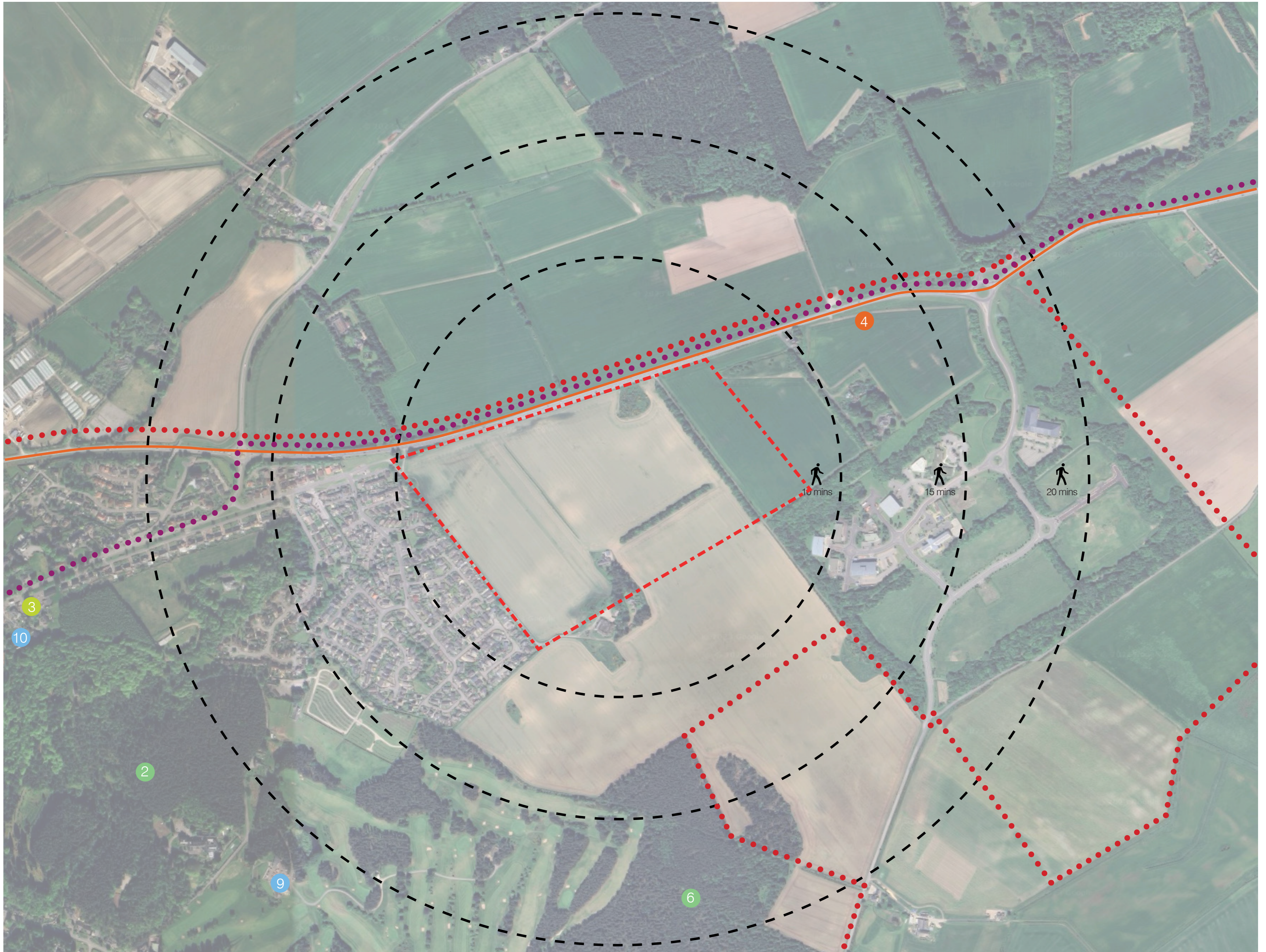
Online: www.moray.gov.uk/moray_standard/page_151261.html **Email:** learningestate@moray.gov.uk





Replacement Forres Academy

Site Selection - Lochyhill / Enterprise Park



Community & Sports Facilities

- 9 Forres Golf Club
- 10 Forres Squash & Fitness Club

Healthcare & Emergency Services

- 3 Forres Police Station

Travel Routes

- 4 A96 Road

Parks & Green Spaces

- 2 Cluny Hill
- 6 Muiry, Newforres & Council Woods

Key

- Proposed Site Boundary
- Walking Distances
- Bus Routes
- Key Travel Routes
- Forres Settlement Boundary



Scan me



Have your say...

Please feel free to look at these boards online and email comments directly to the address below, responses are welcome until 30th November 2023.

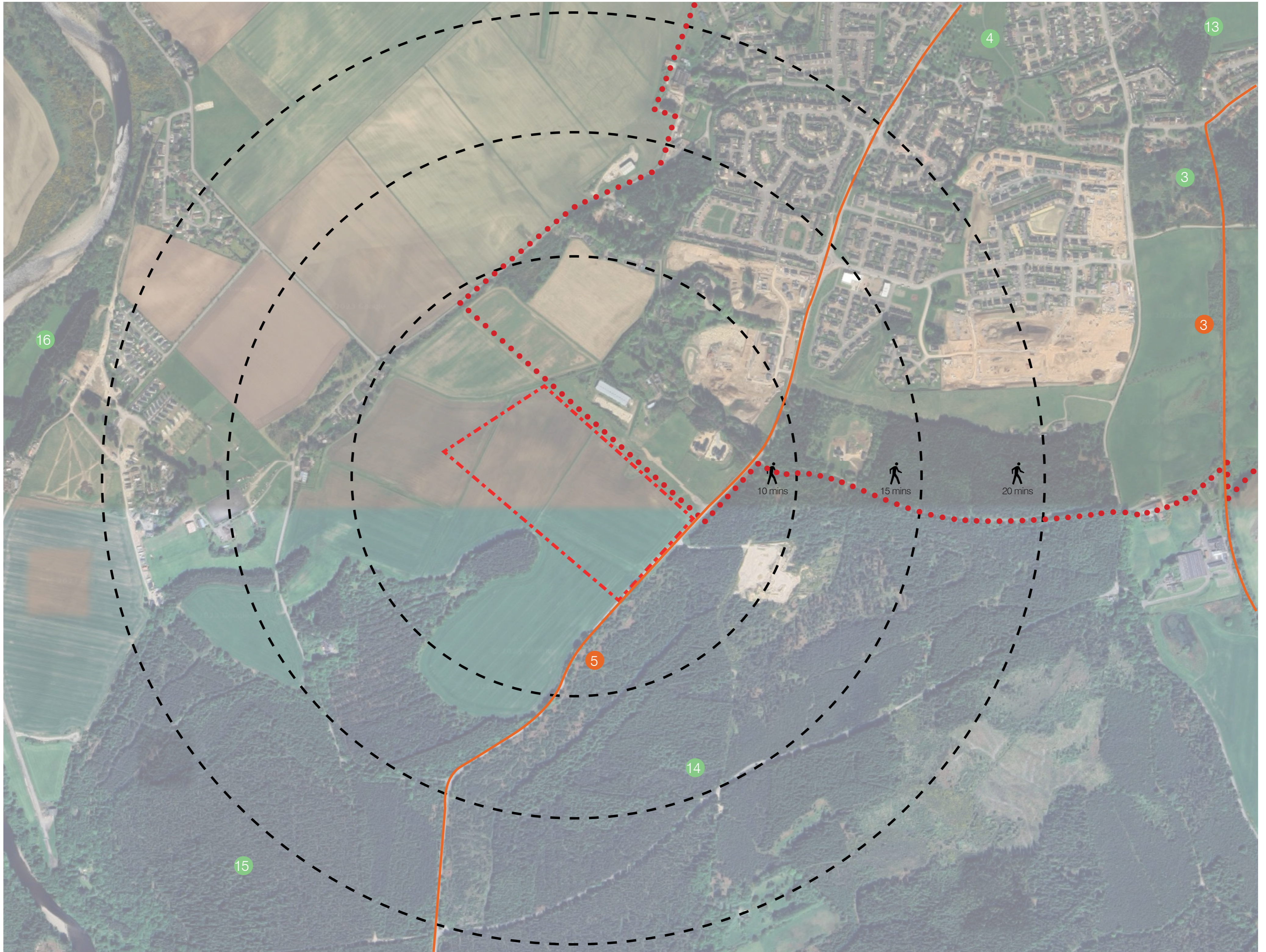
Online: www.moray.gov.uk/moray_standard/page_151261.html **Email:** learningestate@moray.gov.uk





Replacement Forres Academy

Site Selection - Granttown Road



Travel Routes

- 3 The Dava Way
- 5 A940 / Granttown Road

Parks & Green Spaces

- 3 Sanquhar Loch & Woodlands
- 4 Mannachie Park
- 13 Academy Playing Field
- 14 Loch of Blairs & Woodland
- 15 Limekilns Wood
- 16 River Findhorn

Key

- Proposed Site Boundary
- Walking Distances
- Key Travel Routes
- Forres Settlement Boundary



Scan me



Have your say...

Please feel free to look at these boards online and email comments directly to the address below, responses are welcome until 30th November 2023.

Online: www.moray.gov.uk/moray_standard/page_151261.html **Email:** learningestate@moray.gov.uk





Replacement Forres Academy

Site Selection - Place Based Review Summary



Roysvale Park



Lochyhill / Enterprise Park



Granttown Road

Educational pathways / achievement and improvement for all	Spaces that support non traditional learner pathways	Yes	Yes	Yes
	Supporting employability skills and the transition to further and higher education and the world of work	Yes	Yes	Yes
	Human scale design appropriate to the user	Yes	Yes	Yes
	Meeting the core principles of the curriculum	Yes	Yes	Yes
	Delivering a learning journey that supports transition	Yes	Yes	Yes
	Maximum class sizes of 25 for P1 and composite classes, 30 for P2 and P3 and 33 for P4 to P7	Yes	Yes	Yes
	Providing environments that support the highest quality teaching and learning and strengthen leadership in education	Yes	Yes	Yes
Adaptability and Flexibility	Spaces that can be flexible to meet curriculum change and community need	Yes	Yes	Yes
	Flexibility to suit difference learner pathways	Yes	Partial	Partial
	Supported by a strong and resilient digital infrastructure	Yes	Yes	Partial
One Stop Shop/ Learning Village for everyone	Provision of complimentary spaces that allow local services to be joined up, wrapped around family needs	Yes	Partial	Partial
	Inclusive spaces for both pupils and adults to respond to difference support needs	Yes	Yes	Yes
	Welcoming and ease of accessibility to the community year round	Yes	Partial	No
	Spaces that compliment the needs of existing community groups without replication facilities or services	Yes	Partial	Partial
	Addressing inequality and improving the life chances for children, young people and families	Yes	Partial	No
	Clear wayfinding, both internally and externally	Yes	Yes	Yes
	Required security lines are designed discreetly	Yes	Yes	Yes
Inclusive Economic Growth	Design that does not intimidate or deter people who have had poor school experiences	Yes	Yes	Yes
	LEIP Achieve funding target for jobs supported during construction	Yes	Yes	Yes
	Creating hubs that support best value service delivery	Yes	Partial	No
	Flexible community space that supports new ways of working	Yes	Yes	Yes
Promoting Health and Wellbeing for all	Spaces that support collaborative working with partners	Yes	Yes	Yes
	Facilitate intergenerational contact and activities	Yes	Partial	No
	Infrastructure that supports increased active travel	Yes	Partial	No
Promoting Health and Wellbeing for all	Access to out outdoor spaces, supporting and encouraging outdoor learning and activities	Yes	Yes	Yes
	LEIP: Infrastructure supports 11Gbps	Partial	Partial	Partial
	Infrastructure that supports equity of access to digital/ WIFI	Yes	Yes	Yes
	Supporting the effective use of technology for education and community	Yes	Yes	Yes
	Good digital access which supports inclusive economic growth	Yes	Yes	Yes
Environmental/ Sustainability	Infrastructure to support the possible role as a central hub or school cluster	Yes	Yes	Yes
	LEIP: Condition A for 25 years	Yes	Yes	Yes
	LEIP: Achieve in-use energy target	Yes	Yes	Yes
	Meeting Net Zero targets by 2030	Yes	Yes	Yes

Key

 Yes	Yes
 Partial	Partial
 No	No



Scan me



Have your say...

Please feel free to look at these boards online and email comments directly to the address below, responses are welcome until 30th November 2023.

Online: www.moray.gov.uk/moray_standard/page_151261.html **Email:** learningestate@moray.gov.uk

