

## REPORT: FALCONER MUSEUM & STORE, VISIT 29<sup>th</sup> February 2024

The museum visit was completed first.

### FALCONER MUSEUM

#### GROUND FLOOR:

All display cases and open displays were checked for changes in condition of the contents.  
No change was noted from the previous report.

#### Ground Floor Insect Traps:

Trap 1: Spiders (5), woodlouse(1), House Fly (1) at least 4x psocids

Trap 2: Empty

#### FIRST FLOOR:

##### Falconer Room:

The elephant skull, no new flaking of the bone surface was evident.

##### Mezzanine:

##### Environmental data:

Reading from the Tiny Tag sensor in the Archaeology Case: please see the separate environmental report.

##### Insect traps:

Trap 1: (near dressing up corner) Mostly spiders (7) and woodlice (2) plus a psocids (3) and silverfish (1), these are indicators of higher humidity and are incidental rather than serious museum pest species.

Trap 2: (near RAF case) House fly (1), woodlouse (1) and psocids (3)



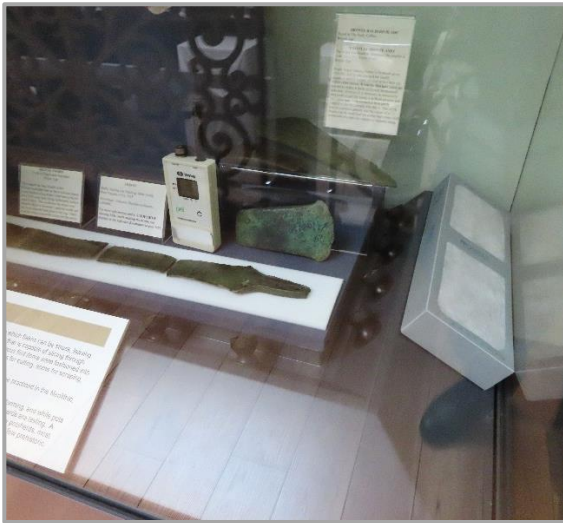
All cases and open displays checked, no obvious changes in relation to pests or instability from the previous report.

Loose dust that had dislodged from the previously treated church collection box in the Religion case was removed and the base of then case cleaned, to allow monitoring for further potential pest activity.

Prosorb cassettes conditioned to 45% Relative Humidity were placed inside 3 of the mezzanine cases, Archaeology, Silver and Medals

#### **ACTION: Next visit**

- Maintain a check on the environment and the pest monitoring of the gallery spaces.



**Prosorb cassette: Archaeology case**



**Prosorb cassette: Silver case**

## MUSEUM STORE

### GROUND FLOOR

#### Current visit:

The ground floor store was checked.

**Environmental sensor:** Please see separate Environmental report.

Insect traps: No pest species, 1 very small fly.

- Selected geology / palaeontology trays were examined. Many of the trays still have dust and small stone fragments in the base due to the drawers not having adequate softening and the contents not being separated.
- As time allows during visits we will aim to clean and line the trays to reduce this problem
- The specimens affected by pyrite decay in trays 18.3.1 and 18.3.2 and in several of the other trays are bagged and separated but are continuing to deteriorate. There is no easily available treatment, we will continue to monitor.
- The Chairs will continue to be monitored for wood worm activity, no activity was noted on this visit.

#### **ACTION: Next visit**

- Continue cleaning the trays to remove insect debris
- Add silica gel sachets to the pyrite affected specimens
- Add softening to reduce physical damage where necessary
- General clean to remove dust accumulation

## GROUND FLOOR FOYER AREA OPPOSITE OFFICE

Large incised stone in case. Acc. No. 1992-16

Monitored – no change this visit

## FIRST FLOOR STORE

### Insect Trap Check

Moth lures all clean, no evidence of flying clothes moth

Blunder traps are located the radiators at front and rear of store – 3x spiders

**Environmental sensor: Stack 6:** Please see separate environmental report.

A walk-through visual check was made for all the stacks and shelving bays.

- Taxidermy, stacks 14 & 15 appear stable no evidence of live moth or beetle. Surface dust on the shelves and some broken hairs but otherwise in fair condition.
- Entomology cabinets and contents, stack 11, historic damage especially in unglazed drawers, appears stable
- 11.9.1 Model rattan house on stilts, shows no further evidence of active woodworm.
- 9.2.2 Painted Iron Trivet (1978.08A) showing white (fungal or salt) powdery accretion on the surface, this was easily wiped away, but unsure as to its cause. Otherwise the item is robust and in good condition. Continue to monitor.
- Art Racks: The racks were pulled out and the frames/artworks checked. No new damage noted.



Trivet 1978.08A

All the stacks and bays were checked along with a randomly selected check inside closed boxes and similar for the trays from stack 7

During the checks, there were items showing some evidence of surface loss, mostly from objects having iron components, such as coopered items with iron bands or other attachments. The losses

mainly involved minor flaking of loose surface rust onto the shelf. No active or new flash rusting was noted.

Dust accumulation is becoming noticeable in some areas.

**ACTION: Next visit**

- Specimens and shelving require basic housekeeping measures to remove dust accumulations.
- Start a preventive programme to freeze some of the entomology drawers with ill-fitting or no glazing, especially those showing (probably historic) specimen damage.

**Jeanette Pearson ACR**

High Life Highland Conservation Service

Inverness Museum & Art Gallery

Highland Folk Museum

29th February 2024