

Learning for Life

As a partnership, we will work together to remove barriers to learning so that people are more likely to reach their potential, leading to improved health, well-being, employability and quality of life.

We will achieve this by:

- Improving the visibility and access to adult learning opportunities
- Facilitating Learner Link Ups to bring learners and providers together.
- Developing the Youth Work Network and associated projects
- Piloting the Outreach Youth Work and community-based projects

Active Citizens and Community Voice

We will work in partnership with our community groups and organisations to address inequality by progressing the things that are important to them.

We will achieve this by:

- Working in partnership to deliver the priorities in the LOIP Locality Plans (New Elgin and Buckie)
- Supporting Community-Led Action Plans
- Working with key Community Planning Partners and sub-groups to raise awareness of the CPP and increasing meaningful community engagement.
- Developing Digital Hubs in communities
- Improving Data capture, particularly around inequalities
- Maximising external funding opportunities
- Sharing information on CLD groups and activities to support social prescribing and other approaches to increasing community connection.

Developing and Connecting the CLD Workforce

We will work to connect CLD partners across Moray to ensure that the breadth of provision is acknowledged and that those involved in delivery can access training and learning opportunities which support delivery through local, regional and national networks.

We will achieve this by:

- Acting and delivering on the Learn North practitioner survey findings
- Delivering professional learning opportunities locally including the CLD Winter Festival.
- Actively promoting the CLD Standards Council and associated groups.

Cross Cutting Themes

- Addressing impacts of rurality and poverty.
- Improving mental health and well-being by reducing social isolation.
- Promoting climate justice *

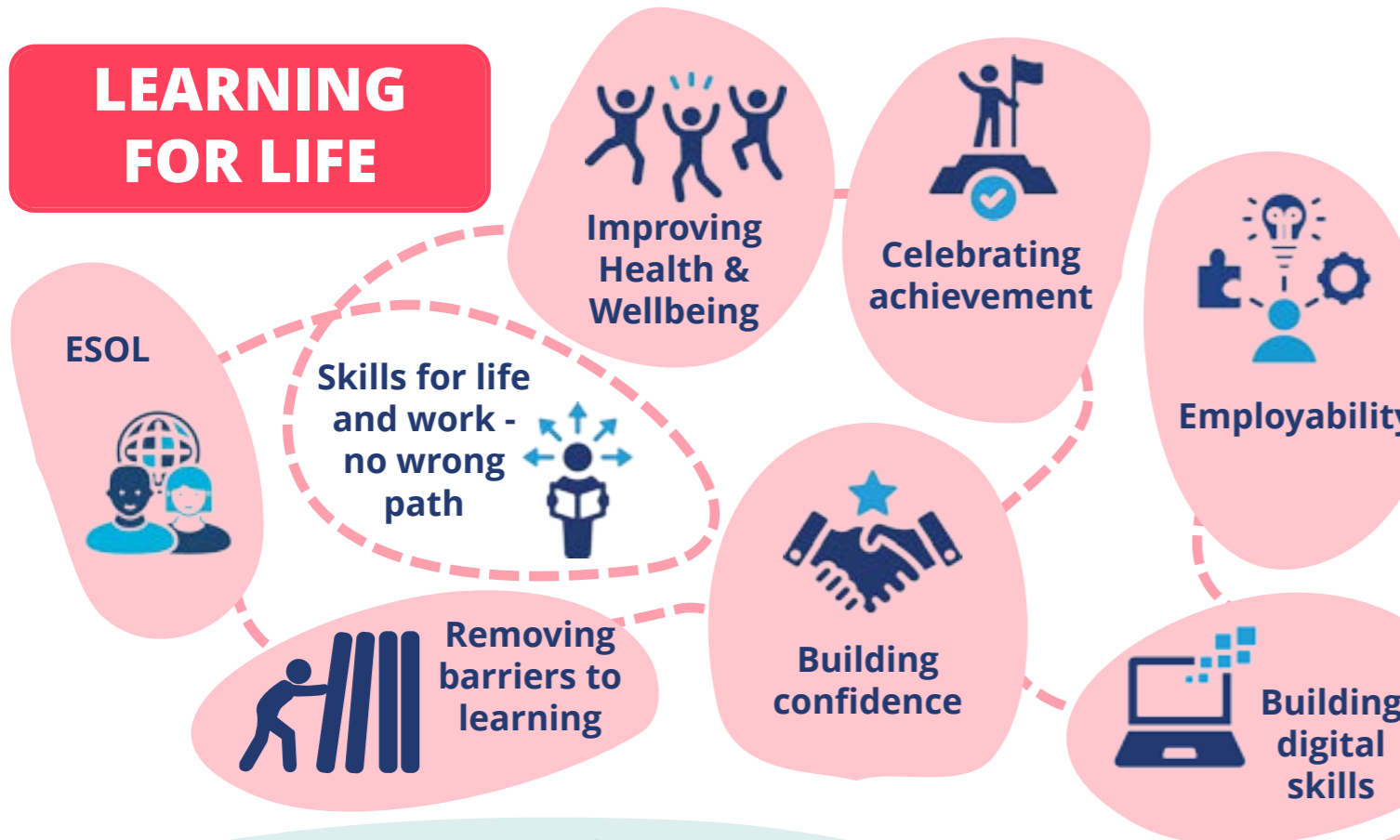
* In the UK, climate justice relates to concerns about the inequitable outcomes for different people and places associated with vulnerability to climate impacts and the fairness of policy and practice responses to address climate change and its consequences



Moray Partnership CLD Plan Summary 2024-2027



LEARNING FOR LIFE



ACTIVE CITIZENS & COMMUNITY VOICE



ADDRESSING IMPACTS OF RURALITY & POVERTY

IMPROVING MENTAL HEALTH & WELLBEING BY REDUCING SOCIAL ISOLATION

DEVELOPING & CONNECTING THE CLD WORKFORCE



PROMOTING CLIMATE JUSTICE

Moray Partnership CLD Plan 2024 - 2027

Community Learning and Development (CLD) develops "critical thinking, personal and social skills, widening access to lifelong educational attainment and employment prospects; improving people's health and well-being; and encouraging active citizenship and participatory democracy" (Learning: For All. For Life. - July 2024)

CommunitiesCLD@moray.gov.uk

