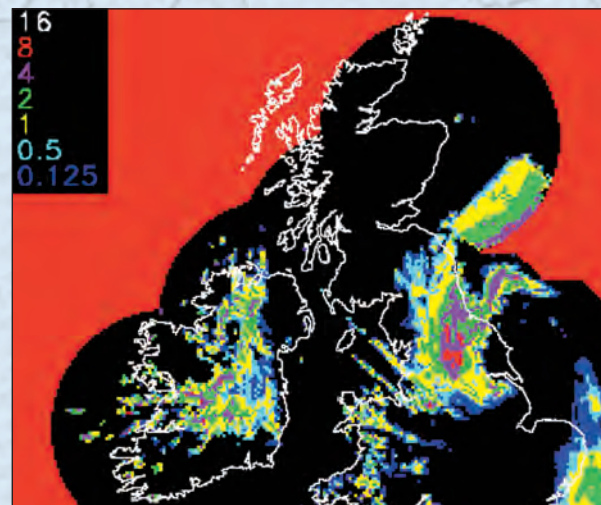


## DETECTION & MONITORING

The Moray Council operates a sophisticated ice detection system. Roadside sensors measure air temperature, road surface temperature and whether the road is dry, wet or icy. The information is transmitted to computers in the roads maintenance offices, where trained staff monitor road conditions from 05.30hrs to 21.00hrs. Staff are on standby outwith these hours to deal with emergencies.



## FOOTWAYS

Like roads, footways are categorised into priority routes, with priority given to those footways which carry the greatest number of pedestrians, that is, the central areas of towns where the shopping and commercial facilities are concentrated, and to footways in the vicinity of major public services, medical or community facilities. Other footways are treated as resources permit.



## DRIVE SAFELY

*Look out for Ice*

### BLACK ROADS DO NOT MEAN ICE FREE ROADS

Winter weather can be very variable and it is easy to be caught out by sudden changes. Black ice can be a particular danger; it is not readily visible and can persist or recur even after the road has been treated with salt.

Salting and gritting will not prevent roads from icing up in extreme conditions. Every driver should take account of prevailing weather and road conditions.

## DRIVER SAFETY ADVICE

- Only make journeys that are absolutely necessary.
- Check the weather forecast and road conditions before travelling.
- Ensure that your vehicle is prepared and fit for your journey.
- Carry warm clothing, food and drink, suitable footwear, a torch, a mobile phone and a spade or shovel in your vehicle.
- Ensure your windows and mirrors are clear, and any build up of snow is removed before setting out. Carry an ice scraper or de-icer.
- Allow extra time for making your journey at a reduced speed.
- Tell someone at your destination what time you expect to arrive.
- Use main roads as much as possible. It is better to travel a little further on a main road that has been treated than to use untreated minor roads.
- Use dipped headlights when driving in poor conditions.
- Avoid sudden turns and harsh braking or acceleration.
- Drive in a higher gear than usual to help prevent loss of grip.
- Allow extra braking and stopping distance on snow covered, slushy or icy roads.
- Take care when travelling behind winter service vehicles and maintain a safe distance behind them.
- If stuck in snow, do not abandon your vehicle; stay until help comes. If you must leave your vehicle try to make sure that it is out of the path of gritters and snow ploughs.
- When stuck, keep the vehicle's engine running to keep warm, but ensure adequate ventilation exists to avoid a build up of suffocating exhaust fumes.

## ROAD INFORMATION

If you must make a journey in difficult conditions, listen to your local radio station for weather forecasts and road condition updates. Road condition updates can also be found at [www.moray.gov.uk](http://www.moray.gov.uk) during periods of adverse weather. Alternatively check with websites or phone lines that provide weather or traffic information..

## REMEMBER

**If your journey is not absolutely necessary – don't make it!**

### Contact Numbers & Further Information

#### Moray Council

Working Hours 0300 1234565

Emergency Out of Hours 08457 565656

AA Roadwatch and Weather Watch 0906 88 84322  
(Premium Rate Telephone Number)

#### Useful Websites

Weather [www.metoffice.gov.uk](http://www.metoffice.gov.uk)  
Travel [www.theaa.com/traffic](http://www.theaa.com/traffic)  
[www.trafficscotland.org](http://www.trafficscotland.org)  
[www.readyscotland.org](http://www.readyscotland.org)

## TRUNK ROADS

The Trunk Roads, A96 Aberdeen to Inverness and A95 Keith to Aviemore are managed for Transport Scotland by BEAR (Scotland) Ltd. Customer care line is 0800 587 1107.

**HELP KEEP MORAY ROADS SAFE THIS WINTER. DON'T LET WINTER CATCH YOU OUT**

Designed by The Moray Council Print Services • updated December 2012 - 41087



# Winter Maintenance Snow Clearing and Gritting



[www.moray.gov.uk](http://www.moray.gov.uk)

**Information on Services and Priorities Routes**

## Winter Treatment - Roads

Each year during the winter period from 1st October until 15th April the Moray Council monitors road and weather conditions to provide a winter maintenance service for the treatment of ice and snow conditions on Moray roads.

There are over 14,950 tonnes of salt held in stores, with 90 personnel and 40 gritting and snowploughing vehicles on standby throughout the Council Area. A fleet of snowblowers and footway ploughs are also strategically located to deal with severe snow conditions when they arise.

Obviously it is not possible to treat every road at the same time so priority routes have been established. A and B class roads, including main public service bus routes are treated first, followed by secondary routes between small communities and then access routes to isolated communities. All other routes will be treated subject to the resources available.

Trunk Roads are the responsibility of Transport Scotland and are managed in the North East by BEAR (Scotland) Ltd.

## PRIORITIES

### Priority 1 (Main routes)

Covered between 0600 – 2100 Monday to Sunday and on public holidays.

### Priority 2

Secondary routes between small communities or within larger communities.

Covered between 0800 and 1800 Monday to Saturday, after Priority 1 have been opened to traffic.

### Priority 3

Access roads to isolated communities in rural areas or link roads in urban areas.

Covered between 0800 and 1800 Monday to Saturday, after Priority 1 and 2 have been opened to traffic.

### Priority 4

Local access roads, service roads and minor roads in urban areas.

Covered between 0800 and 1800 Monday to Saturday, after all higher priority routes have been opened to traffic.

### Priority 5

Private (unadopted) and privately maintained roads are treated only in emergencies.



## Gritter Routes

— Priority 1  
— Trunk Roads

**The Council has 18 priority 1  
gritter routes covering some  
46% of the total Council  
roads network.**

**For further information and  
details of the Winter Service  
Operational Plan, please visit  
[www.moray.gov.uk/winter](http://www.moray.gov.uk/winter)**