

4.2 Context: Settlement Edge

The north edge of Keith is defined by the strath of the River Isla, which is also the location of the railway and the lines of bonded warehouses, while on the elevated ridges extending from the other sides of the town, the settlement is subtly contained by gently rising landform leading to the highest points, which lie beyond the outskirts of the town.

The illustrations opposite indicate the range of settlement edge 'types' found on the outskirts of Keith. The location of these edges is shown on the Settlement Edge Map which follows.

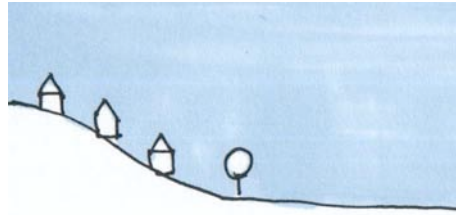
Key characteristics of the settlement edge of Keith include:

- the subtlety of the containment of the settlement, which is tentatively enclosed by gentle rising landform, often with no other features to reinforce the sense of edge
- the physical barrier created by the railway and bonded warehouses to the north of the settlement
- the quality and management of the cultivated farmland which lies directly adjacent to much of the remaining settlement edge, providing a well defined contrast to the built development and avoiding the appearance of neglect which sometimes accompanies peri urban areas
- The enhanced sense of arrival created by the wooded slopes within the river valleys, where roads and the town are framed by mature trees on arrival
- the well defined sense of arrival from the elevated approach roads, from where the town is visible from a distance and the roads ascend to the settlement edge

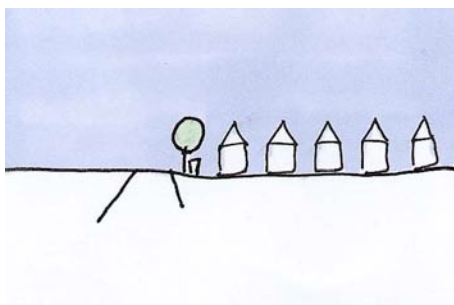
Keith: Sketches Illustrating Types of Settlement Edge



Edge reinforced by containing ridge or hill



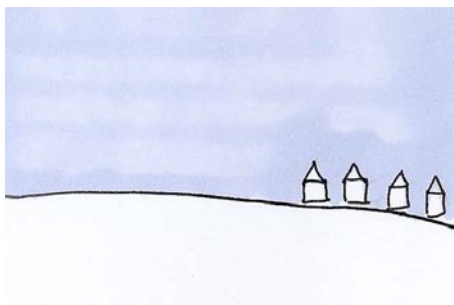
Edge reinforced by distinct change of gradient



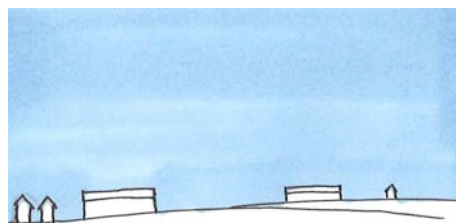
Edge reinforced by one or several non topographical landscape features, such as trees, footpath, park



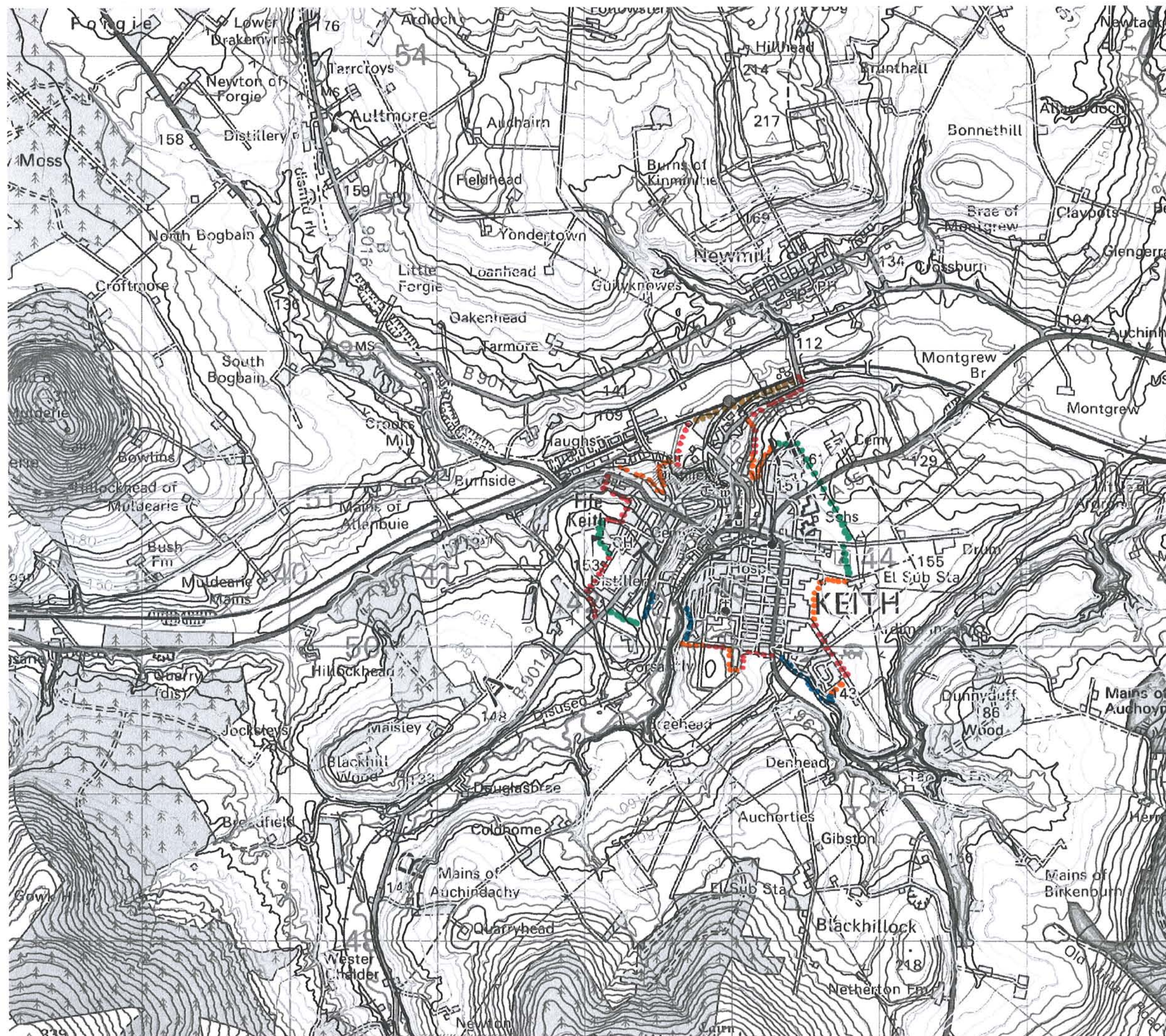
Edge reinforced by major road or railway



No distinct defining feature



Fragmented edge








INTEGRATION OF NEW DEVELOPMENT INTO THE MORAY LANDSCAPE

Keith

SETTLEMENT EDGE

Scale 1:25 000

Settlement Edge

-  Edge only just contained by very gentle slopes
-  Edge characterised by steep slopes
-  Edge reinforced by non topographical feature such as a line of trees, playing field or footpath
-  Edge reinforced by a major road or railway
-  No distinct feature defining edge

Reproduced from the Ordnance Survey map with the permission of The Controller of Her Majesty's Stationary Office. Crown Copyright 2005 The Moray Council 100023422

7 April 2005

4.3 Context: Landscape Setting

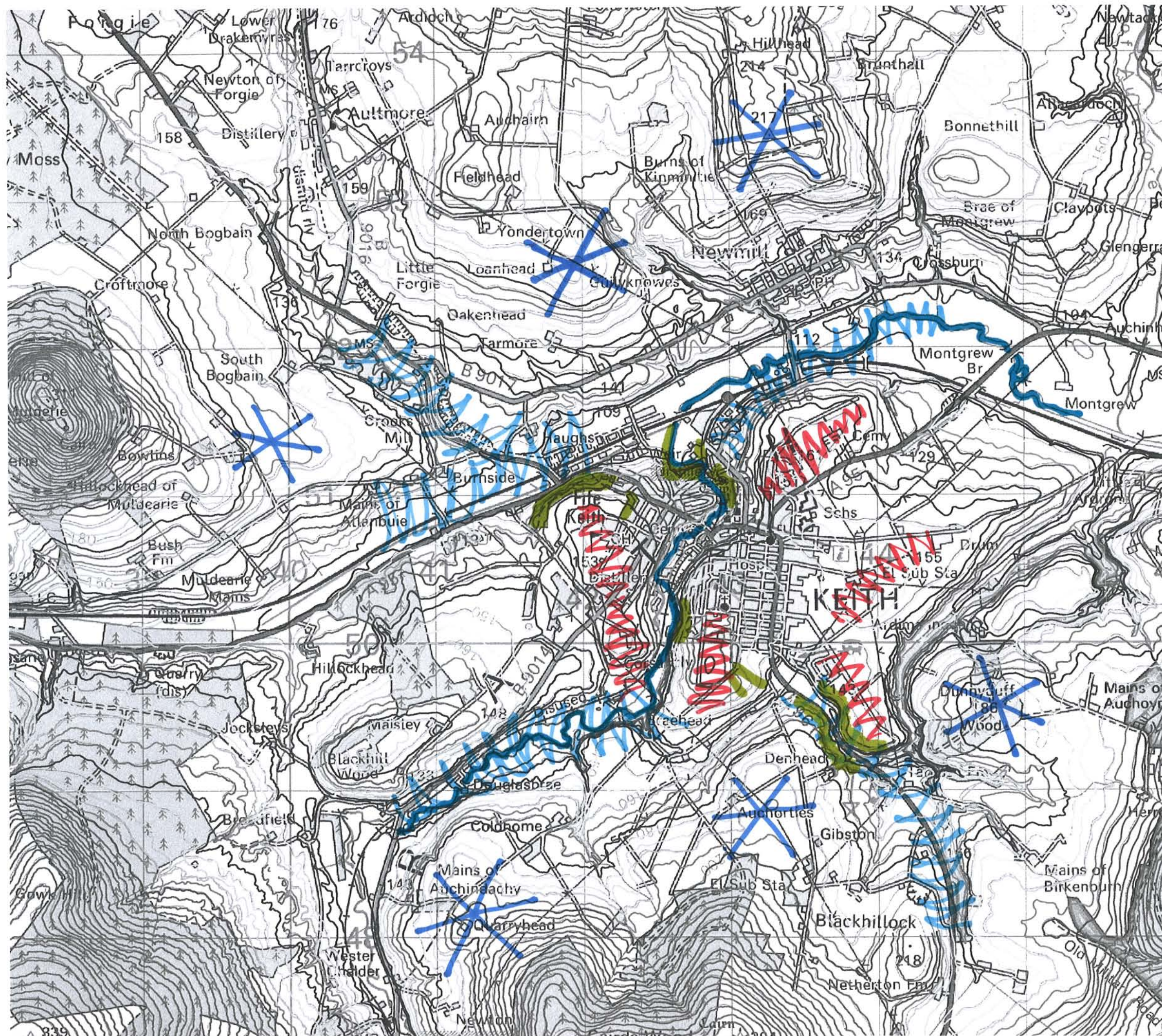
Within a broad context, Keith is located within a stretch of higher hills which extend south from the coastal plain. The varied relief, from steep sided river valleys, to relatively level domed ridges and then individual summits of distinctive hills, creates a diverse landscape setting.

The surrounding landscape is largely farmed land, with arable cultivation rising to improved grassland on the higher slopes, and woodland largely contained to the steep slopes of the river valleys.

The settlement is elevated, and is therefore visible from more distant views on approach, although these views are generally limited to the outer settlement edge.

Key characteristics of the landscape setting include:

- the extensive range of foothills within which Keith is located
- the conjunction of sinuous, steep sided river valleys which congregate at Keith form a contrast to the more level ridges on which the settlement is located
- the expansive views from the town encompass the hills and also extend for some distance along the river valleys
- the contribution made to the setting by woodland, particularly along the steep sided river valleys, where they are also used for informal recreation
- the range of informal access within the surrounding landscape to the east, where numerous footpaths follow tracks across elevated land



INTEGRATION OF NEW DEVELOPMENT INTO THE MORAY LANDSCAPE

Keith

LANDSCAPE SETTING

Scale 1:25 000

Wider setting



Higher hills are located surrounding Keith on all sides



Long winding river valleys extend away from Keith on all sides

Topographical Setting



The elevated ridges on which the town is located, rise gently to form subtle containment around the outskirts of the town

Other Landscape Features



The River Isla winds through the town



Woodland, although small in area, contributes significantly to visual setting

Reproduced from the Ordnance Survey map with the permission of The Controller of Her Majesty's Stationary Office. Crown Copyright 2005 The Moray Council 100023422

7 April 2005