

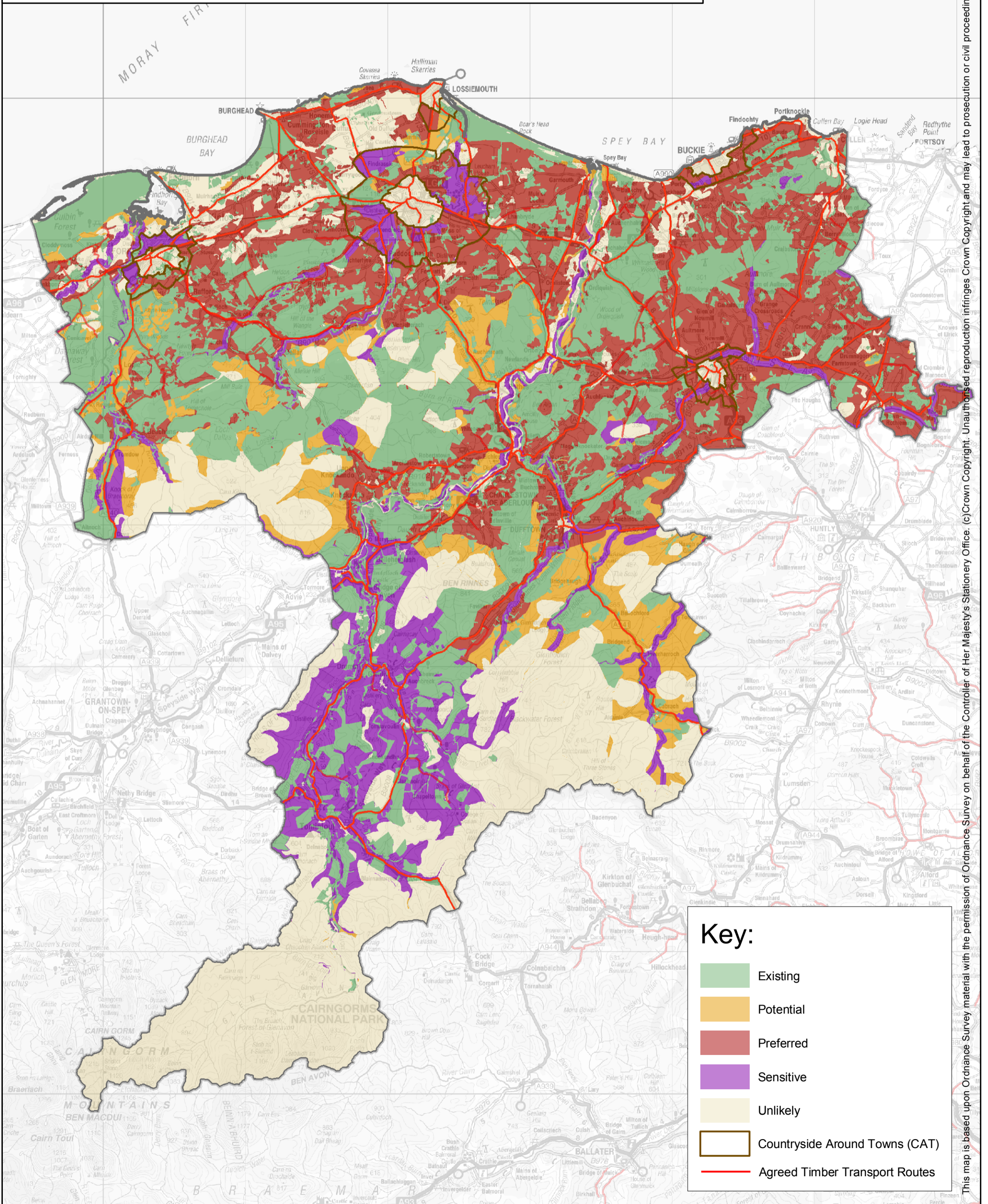
# MORAY WOODLAND STRATEGY

## STRATEGY MAP





December 2002



  
NORTH  
1:250,000



**Key:**

-  Existing
-  Potential
-  Preferred
-  Sensitive
-  Unlikely
-  Countryside Around Towns (CAT)
-  Agreed Timber Transport Routes

This map is based upon Ordnance Survey material with the permission of Ordnance Survey on behalf of the Controller of Her Majesty's Stationery Office. (c) Crown Copyright. Unauthorised reproduction infringes Crown Copyright and may lead to prosecution or civil proceedings. The Moray Council 100023422 2008.