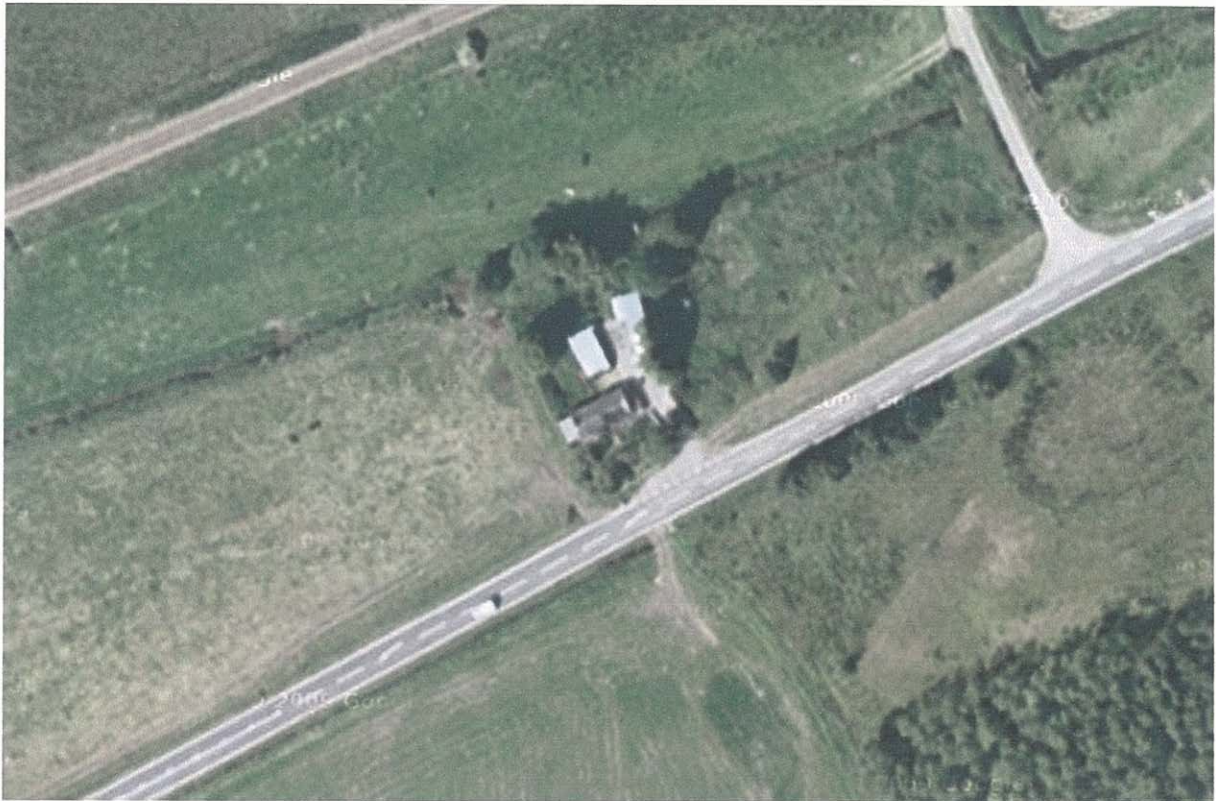


VISUAL IMPACT ASSESSMENT



11/00157/APP

ERECTION OF A SINGLE C&F GREEN ENERGY 20KW WIND TURBINE

LILAC NEUK, KEITH, BANFFSHIRE, AB55 6RT

Visual Impact Assessment for Lilac Neuk

| | |
|------------------------------|--|
| Application Reference | 11/00157/APP |
| Proposal | Erection of a single C&F 20kw turbines on a 20m mast |
| Address | Lilac Neuk, Keith, AB55 6RT |

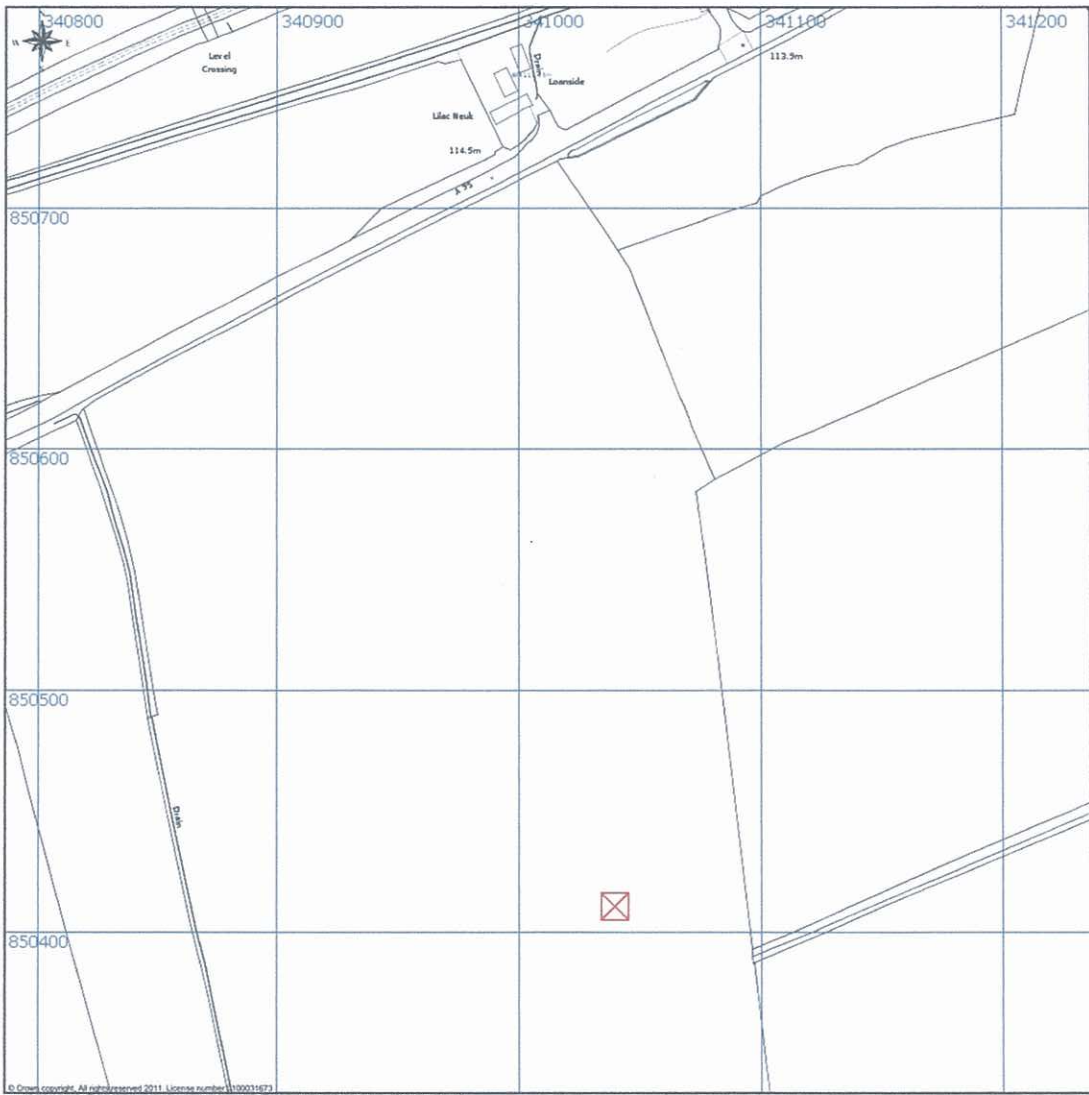
| | |
|-------------------------------|---|
| Statement of Objective | |
| Part I | <ul style="list-style-type: none"> • To demonstrate possible visual impact of the installation of one 27m high turbine at Lilac Neuk. • Viewpoints selected in consultation with Moray Council Planning Officer Stuart Morrison to indicate likely Visual Impact of installation from surrounding publicly accessible viewpoints. |

| | |
|---------------------------------|--|
| Equipment Specifications | Sony DSC – P200 |
| Camera Settings | <ul style="list-style-type: none"> • Auto Setting • f/5.6 • ISO - 100 |
| Lens Height from Ground | Approximately 1.5m |
| Software | KJ Clipper Photo Editor Version 1.5 Copyright (C) 2006, 2007, 2008, 2009, 2010 KJ Nova, Inc. |
| Weather Conditions | Overcast |
| Date and Time | 09 March 2011 15:15 – 16:00 hrs |

| | |
|-----------------------------|--|
| Index | |
| Figure 1 | Location Plan of Installation 1:2500 Scale |
| Figure 2 | OS 1:25,000 Scale Map indicating viewpoints and turbine location |
| Plates 1 – 4 | Photographs 1 – 4 taken and ordered as indicated in Fig.2 |
| Photomontage Image 1 | One photomontage image corresponding to the vista from P (2). ¹ |

¹ No other photomontage visualisations will be prepared as the lie of the land and foliage growth prevent a direct line of site to the turbine.

Figure 1. Location Plan 1:2500 Scale




© Crown copyright. All rights reserved 2011. License number 1000015873
Produced by the Ordnance Survey National Geographic Database and incorporating surveyed revision available at the date of production.
Reproduction in whole or in part is prohibited without the prior permission of Ordnance Survey.
The representation of a road, track or path is no evidence of a right of way.
The representation of features as lines is no evidence of a property boundary.

Scale 1:2500

Proposal to install a single C&F Green Energy wind turbine on a 20m mast

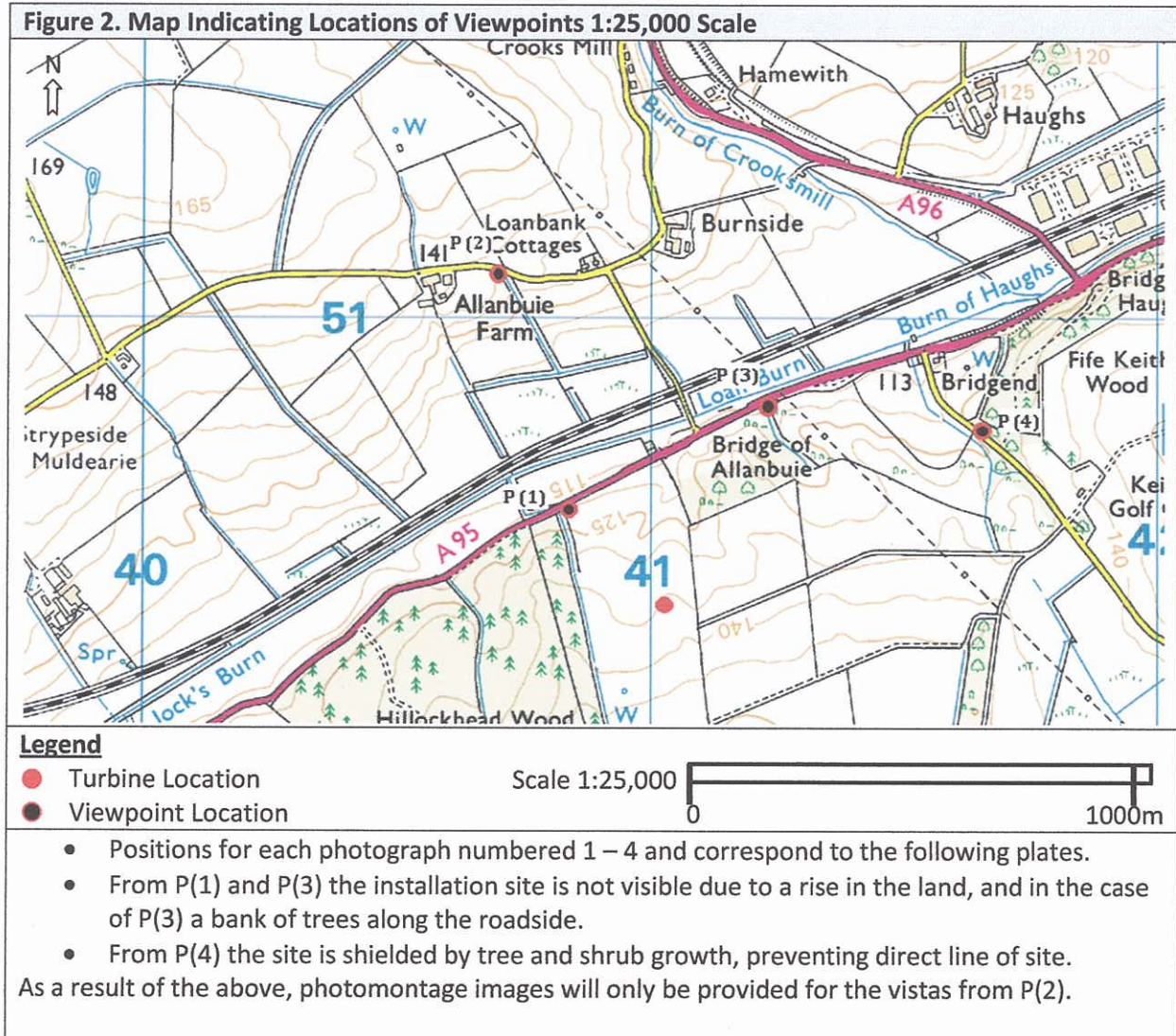
LILAC NEUK
KEITH
AB55 6RT

 Proposed turbine location (grid reference: 341040, 850411)



Prepared by: Kirstin Gardner

8-2-2011



Conclusion

The turbine will have a negligible visual impact on the surrounding landscape. Visibility of the turbine will be restricted to the stretch of land between Hillcockhead Wood and the Fife Keith Wood. Even from this area, the turbine will often be hidden from view due to natural topographical features preventing a direct line of site.



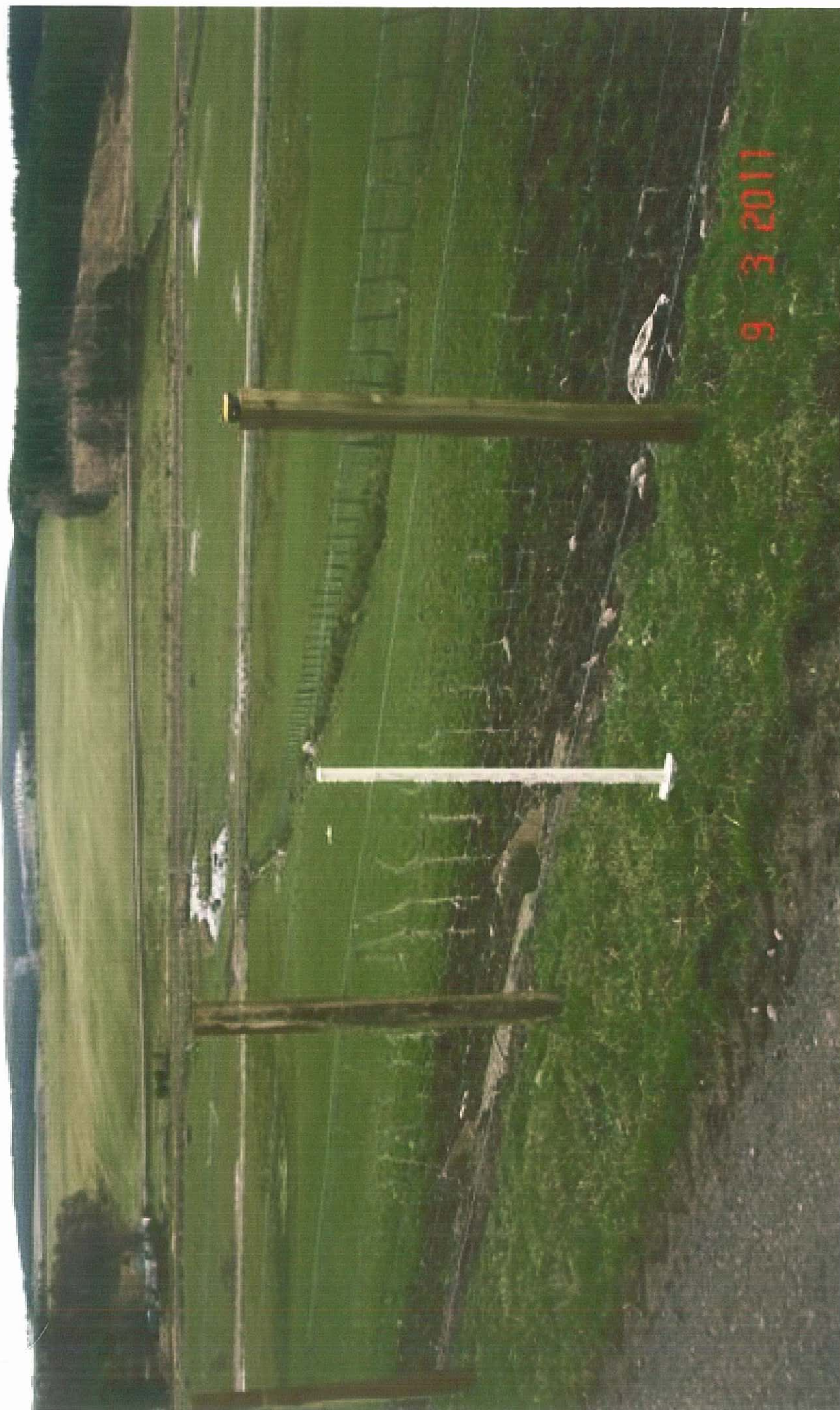
RECEIVED

26 AUG 2011



9 3 2011

20 Aug 2011



9 3 2011

26 AUG 2011

9 3 2011





9. 3. 2011

9 3 2017

