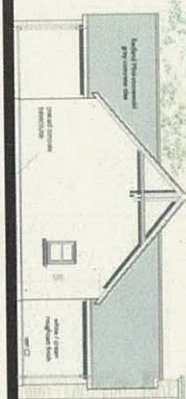


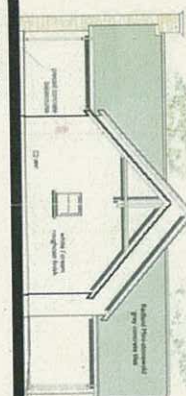
FRONT ELEVATION



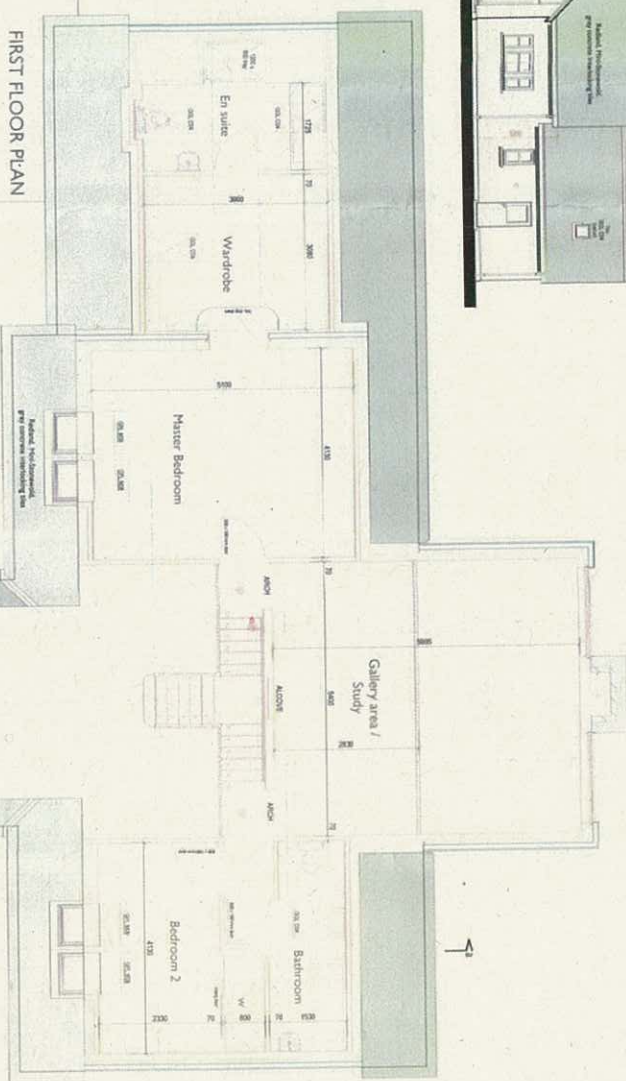
REAR ELEVATION



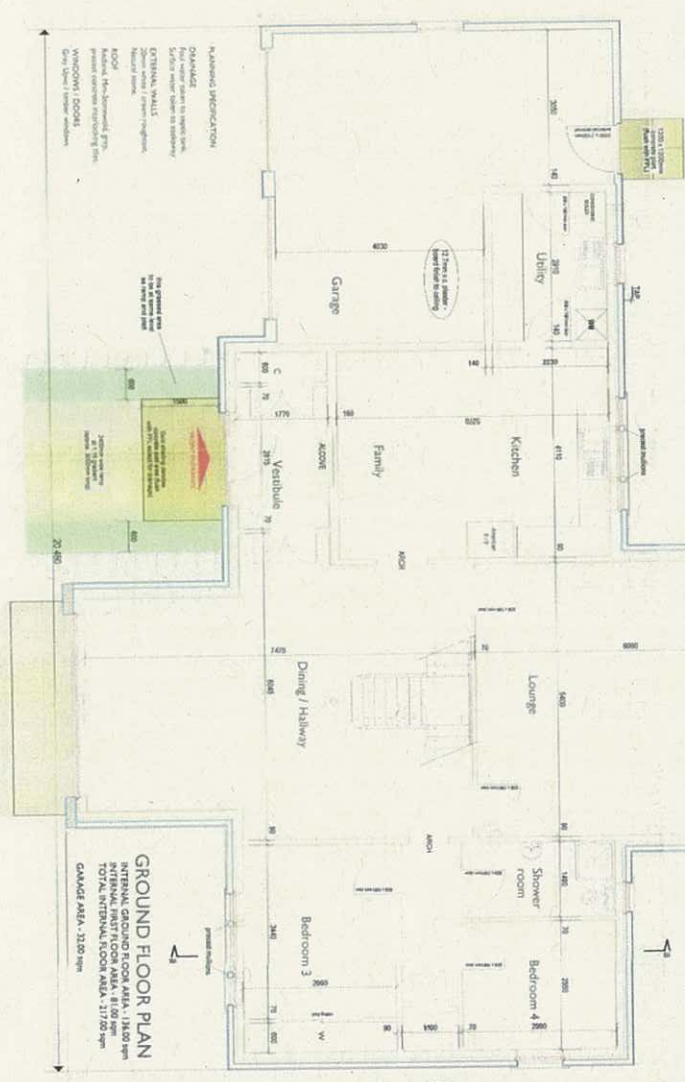
SIDE ELEVATION



SIDE ELEVATION



FIRST FLOOR PLAN

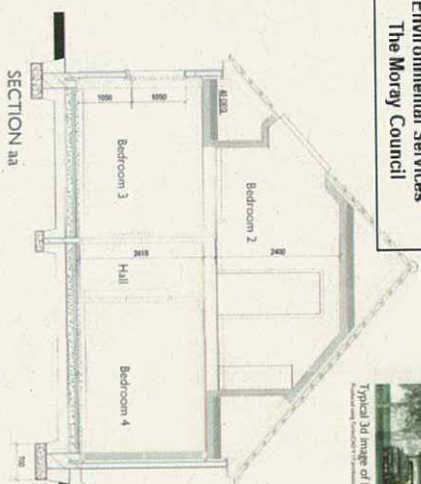


GROUND FLOOR PLAN

REFUSED
08.05.2012
Development Management
Environmental Services
The Moray Council



Typical 3d image of house design
Produced using TurboCAD V 17 professional. ©2011 user design 2011



SECTION aa



Strathdee Properties Ltd

Figure 1. A schematic diagram of the experimental design. The subjects were divided into two groups: the control group and the experimental group. The control group received a standard training program, while the experimental group received a modified training program. The subjects were then tested on a series of tasks, and their performance was compared between the two groups.

$$\text{res}(100, \text{map}(c)) = 4$$

157

posed erection of dwellinghouse

attached garage At Clarky Hill

Wodhill, Burthead, by Edin. Moray

Mrs. Diane McConachie

[illegible][illegible]

1. *Chlorophyll a* and *Chlorophyll b* contents were determined by spectrophotometry using the method of Lichtenthaler and Whaley (1987).

| WING NO. | SCALE |
|----------|-------|
| 1 | 1 |
| 2 | 2 |
| 3 | 3 |
| 4 | 4 |
| 5 | 5 |
| 6 | 6 |
| 7 | 7 |
| 8 | 8 |
| 9 | 9 |
| 10 | 10 |
| 11 | 11 |
| 12 | 12 |
| 13 | 13 |
| 14 | 14 |
| 15 | 15 |
| 16 | 16 |
| 17 | 17 |
| 18 | 18 |
| 19 | 19 |
| 20 | 20 |
| 21 | 21 |
| 22 | 22 |
| 23 | 23 |
| 24 | 24 |
| 25 | 25 |
| 26 | 26 |
| 27 | 27 |
| 28 | 28 |
| 29 | 29 |
| 30 | 30 |
| 31 | 31 |
| 32 | 32 |
| 33 | 33 |
| 34 | 34 |
| 35 | 35 |
| 36 | 36 |
| 37 | 37 |
| 38 | 38 |
| 39 | 39 |
| 40 | 40 |
| 41 | 41 |
| 42 | 42 |
| 43 | 43 |
| 44 | 44 |
| 45 | 45 |
| 46 | 46 |
| 47 | 47 |
| 48 | 48 |
| 49 | 49 |
| 50 | 50 |
| 51 | 51 |
| 52 | 52 |
| 53 | 53 |
| 54 | 54 |
| 55 | 55 |
| 56 | 56 |
| 57 | 57 |
| 58 | 58 |
| 59 | 59 |
| 60 | 60 |
| 61 | 61 |
| 62 | 62 |
| 63 | 63 |
| 64 | 64 |
| 65 | 65 |
| 66 | 66 |
| 67 | 67 |
| 68 | 68 |
| 69 | 69 |
| 70 | 70 |
| 71 | 71 |
| 72 | 72 |
| 73 | 73 |
| 74 | 74 |
| 75 | 75 |
| 76 | 76 |
| 77 | 77 |
| 78 | 78 |
| 79 | 79 |
| 80 | 80 |
| 81 | 81 |
| 82 | 82 |
| 83 | 83 |
| 84 | 84 |
| 85 | 85 |
| 86 | 86 |
| 87 | 87 |
| 88 | 88 |
| 89 | 89 |
| 90 | 90 |
| 91 | 91 |
| 92 | 92 |
| 93 | 93 |
| 94 | 94 |
| 95 | 95 |
| 96 | 96 |
| 97 | 97 |
| 98 | 98 |
| 99 | 99 |
| 100 | 100 |

Journal of Management Education 35(1)

| WIN BY | DATE |
|--------|------|
| | |

Faculty of
