

# VIEW 9 - wireframe

Looking south-west from Kirktown of Deskford

CO-ORDINATES OF VIEW POINT - 350808E, 861618N

DISTANCE TO APPLICATION TURBINES - 3.29Km

ORIENTATION OF VIEW - 205degrees

PHOTOGRAPH DATE - 15th November 2012 (14:16pm)

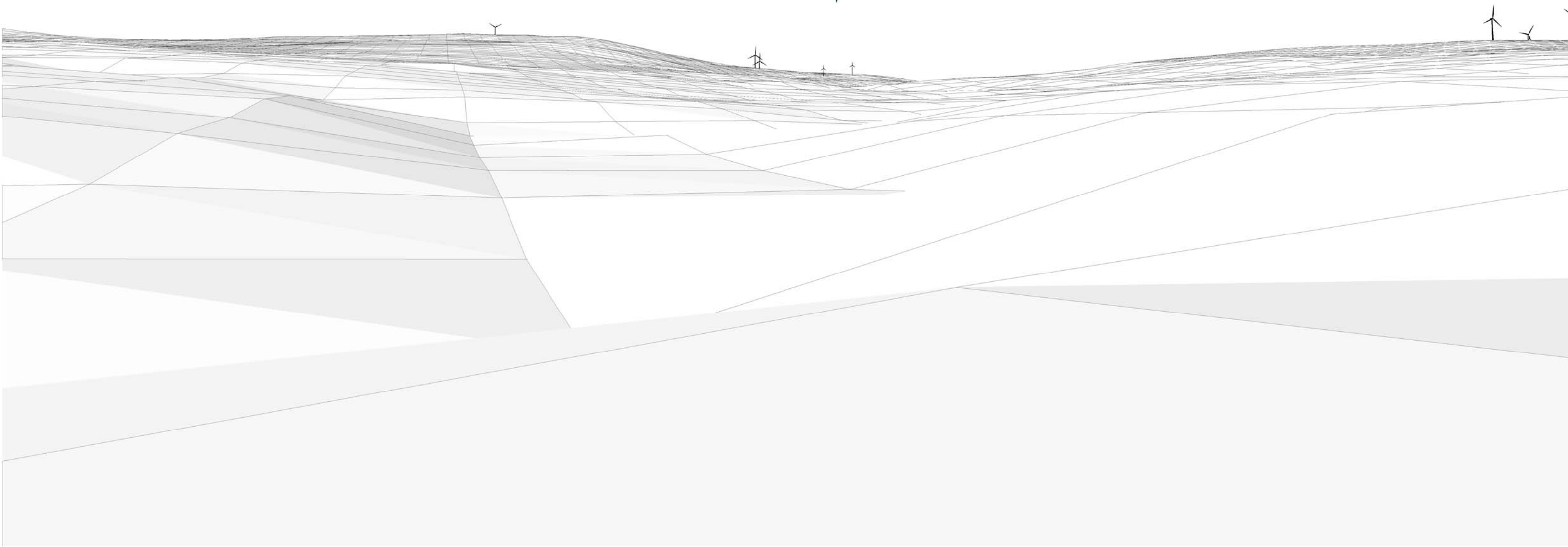
CAMERA SET-UP: Pentax K-r DSLR digital camera with an 18mm  
fixed focal length and a resultant horizontal field of view of 66 degrees

RECOMMENDED VIEWING DISTANCE - 305mm @ A3

13no. 110m high turbines (to tip) @  
Aultmore Forest wind farm, Keith (07/02375/EIA)  
status: PENDING

2no. 92.5m high turbines (to tip) @  
Netherton of Windyhills, Keith (09/00763/FUL)  
status: GRANTED and CONSTRUCTED

1no. 80m high turbine (to tip) @  
Myreton Crossroads, Keith (07/01102/FUL)  
status: GRANTED







## VIEW 9

Looking south-west from Kirktown of Deskford  
(all turbine obscured by trees and buildings)

CO-ORDINATES OF VIEW POINT - 350808E, 861618N

DISTANCE TO APPLICATION TURBINES - 3.29Km

ORIENTATION OF VIEW - 205degrees

PHOTOGRAPH DATE - 15th November 2012 (14:16pm)

CAMERA SET-UP: Pentax K-r DSLR digital camera with an 18mm  
fixed focal length and a resultant horizontal field of view of 66 degrees

RECOMMENDED VIEWING DISTANCE - 305mm @ A3



# VIEW 10 - wireframe

Looking south-west from Ordens / Croftgloy

CO-ORDINATES OF VIEW POINT - 351027E, 860606N

DISTANCE TO APPLICATION TURBINES - 2.36Km

ORIENTATION OF VIEW - 215degrees

PHOTOGRAPH DATE - 15th November 2012 (14:05pm)

CAMERA SET-UP: Pentax K-r DSLR digital camera with an 18mm

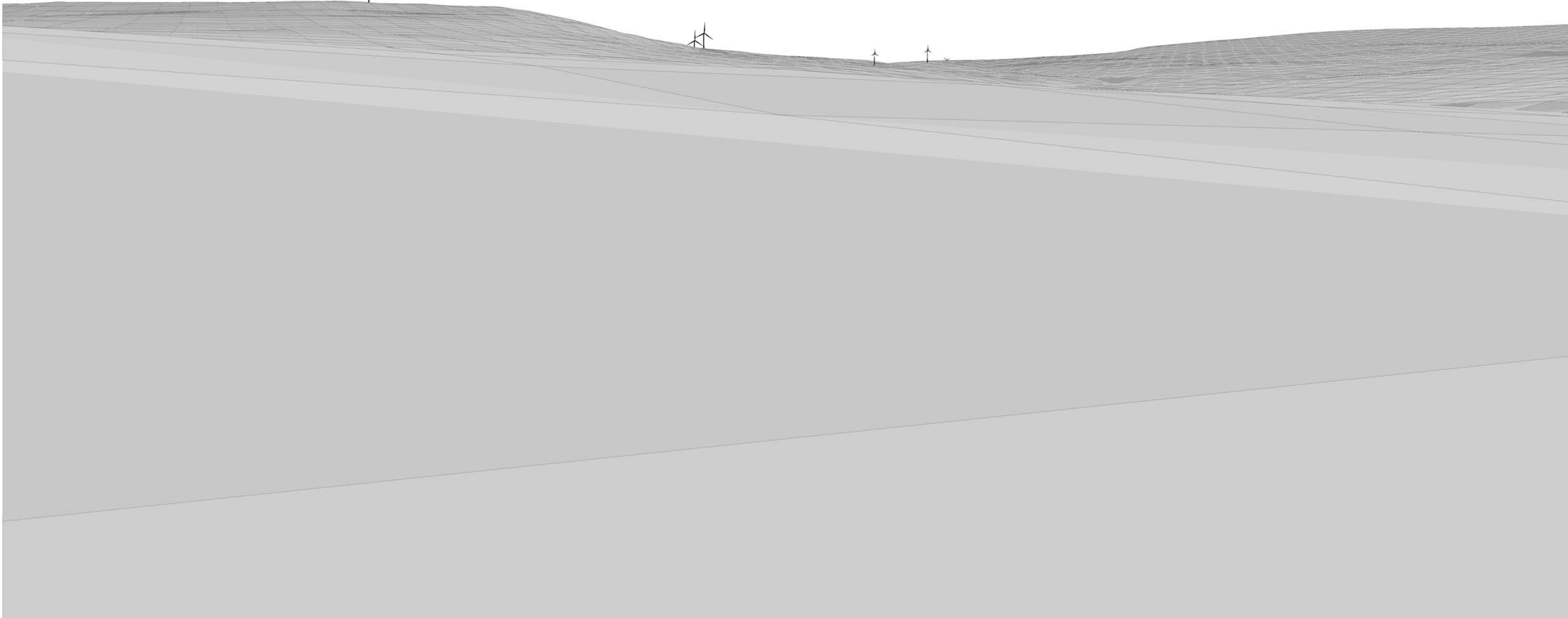
fixed focal length and a resultant horizontal field of view of 66 degrees

RECOMMENDED VIEWING DISTANCE - 305mm @ A3

1no. 80m high turbine (to tip) @  
Myreton Crossroads, Keith (07/01102/FUL)  
status: GRANTED



2no. 92.5m high turbines (to tip) @  
Netherton of Windyhills, Keith (09/00763/FUL)  
status: GRANTED and CONSTRUCTED





## VIEW 10

Looking south-west from Ordens / Croftgloy (turbine 2 obscured by trees)

CO-ORDINATES OF VIEW POINT - 351027E, 860606N

DISTANCE TO APPLICATION TURBINES - 2.36Km

ORIENTATION OF VIEW - 215degrees

PHOTOGRAPH DATE - 15th November 2012 (14:05pm)

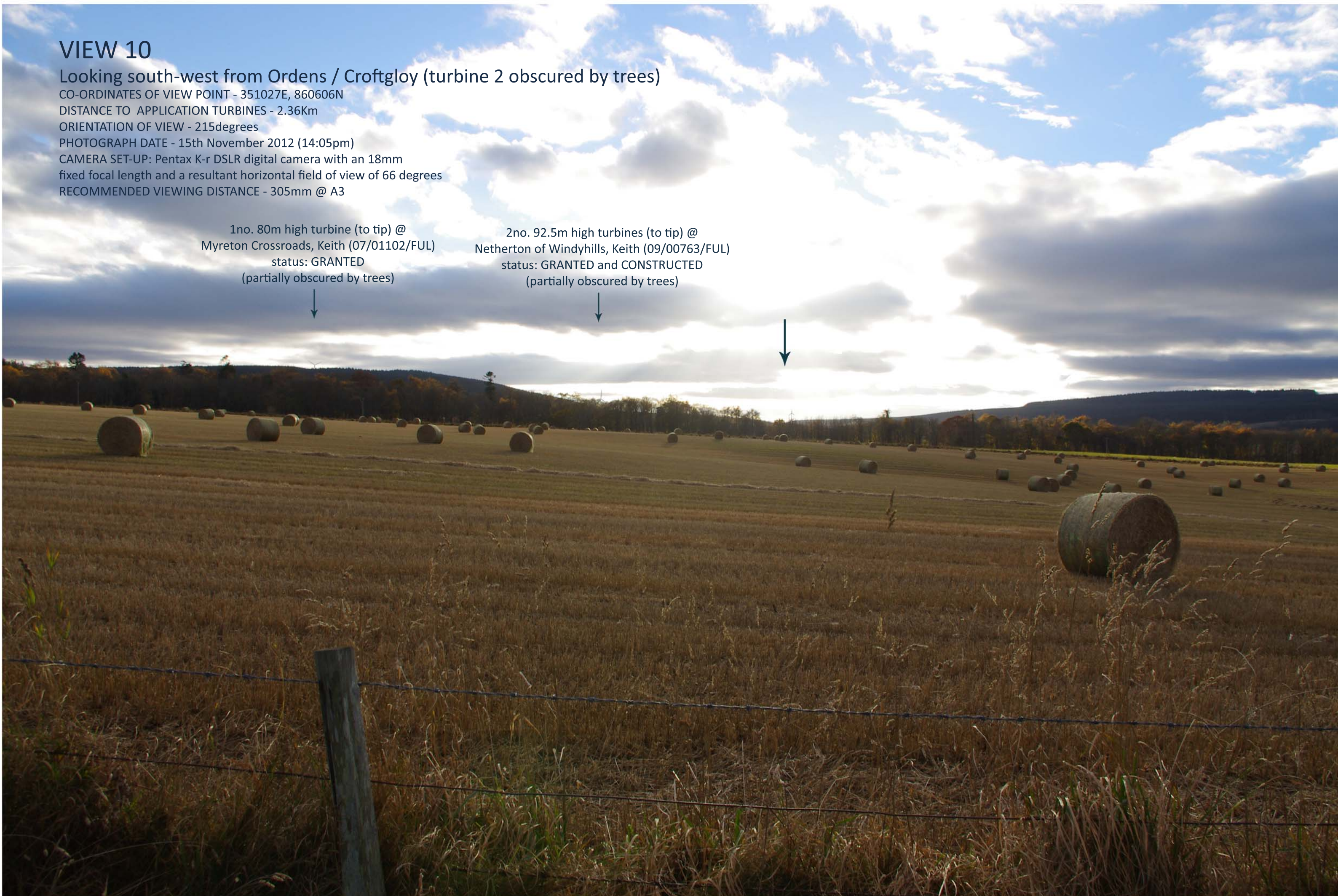
CAMERA SET-UP: Pentax K-r DSLR digital camera with an 18mm  
fixed focal length and a resultant horizontal field of view of 66 degrees

RECOMMENDED VIEWING DISTANCE - 305mm @ A3

1no. 80m high turbine (to tip) @  
Myreton Crossroads, Keith (07/01102/FUL)  
status: GRANTED  
(partially obscured by trees)



2no. 92.5m high turbines (to tip) @  
Netherton of Windyhills, Keith (09/00763/FUL)  
status: GRANTED and CONSTRUCTED  
(partially obscured by trees)





# VIEW 11 - wireframe

Looking south-west from Oathillock / The Knowe

CO-ORDINATES OF VIEW POINT - 351787E, 862299N

DISTANCE TO APPLICATION TURBINES - 3.26Km

ORIENTATION OF VIEW - 225degrees

PHOTOGRAPH DATE - 15th November 2012 (14:11pm)

CAMERA SET-UP: Pentax K-r DSLR digital camera with an 18mm

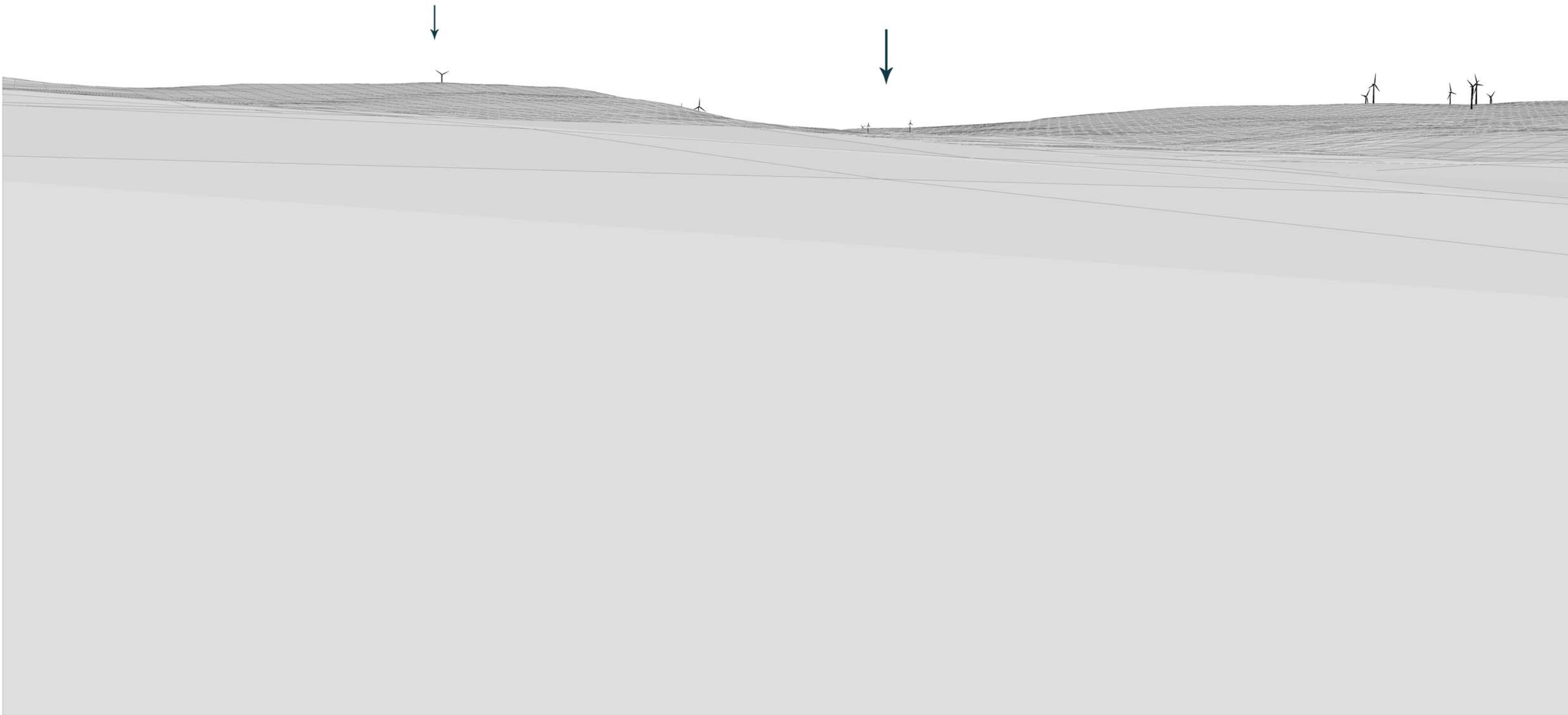
fixed focal length and a resultant horizontal field of view of 66 degrees

RECOMMENDED VIEWING DISTANCE - 305mm @ A3

1no. 80m high turbine (to tip) @  
Myreton Crossroads, Keith (07/01102/FUL)  
status: GRANTED

2no. 92.5m high turbines (to tip) @  
Netherton of Windyhills, Keith (09/00763/FUL)  
status: GRANTED and CONSTRUCTED

13no. 110m high turbines (to tip) @  
Aultmore Forest wind farm, Keith (07/02375/EIA)  
status: PENDING





# VIEW 11

Looking south-west from Oathillock / The Knowe (turbines obscured by trees)

CO-ORDINATES OF VIEW POINT - 351787E, 862299N

DISTANCE TO APPLICATION TURBINES - 3.26Km

ORIENTATION OF VIEW - 225degrees

PHOTOGRAPH DATE - 15th November 2012 (14:11pm)

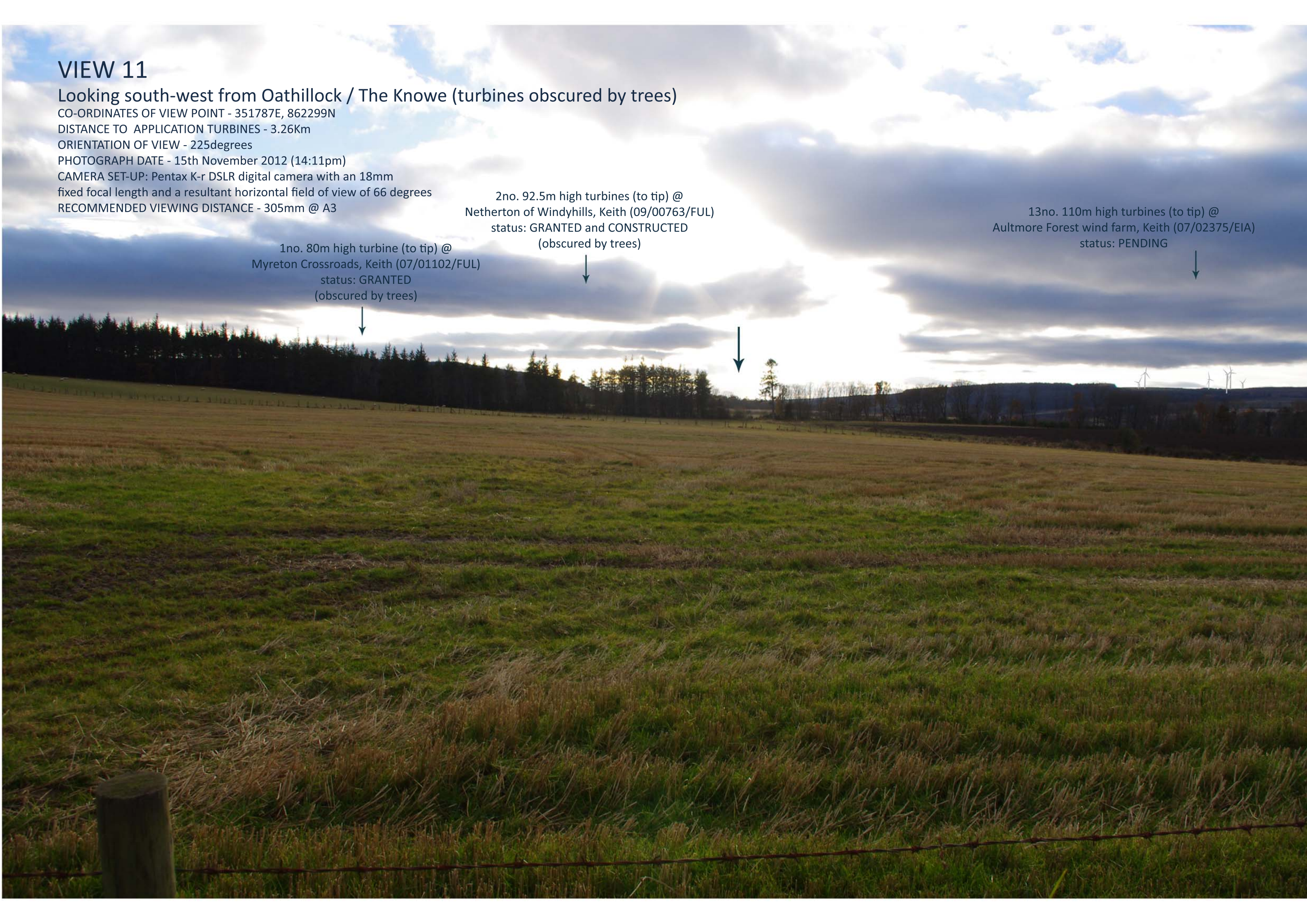
CAMERA SET-UP: Pentax K-r DSLR digital camera with an 18mm  
fixed focal length and a resultant horizontal field of view of 66 degrees

RECOMMENDED VIEWING DISTANCE - 305mm @ A3

1no. 80m high turbine (to tip) @  
Myreton Crossroads, Keith (07/01102/FUL)  
status: GRANTED  
(obscured by trees)

2no. 92.5m high turbines (to tip) @  
Netherton of Windyhills, Keith (09/00763/FUL)  
status: GRANTED and CONSTRUCTED  
(obscured by trees)

13no. 110m high turbines (to tip) @  
Aultmore Forest wind farm, Keith (07/02375/EIA)  
status: PENDING





# VIEW 12 - wireframe

Looking south from Deskford Community Hall / Squaredoch

CO-ORDINATES OF VIEW POINT - 350450E, 861398N

DISTANCE TO APPLICATION TURBINES - 2.86Km

ORIENTATION OF VIEW - 198degrees

PHOTOGRAPH DATE - 15th November 2012 (14:20pm)

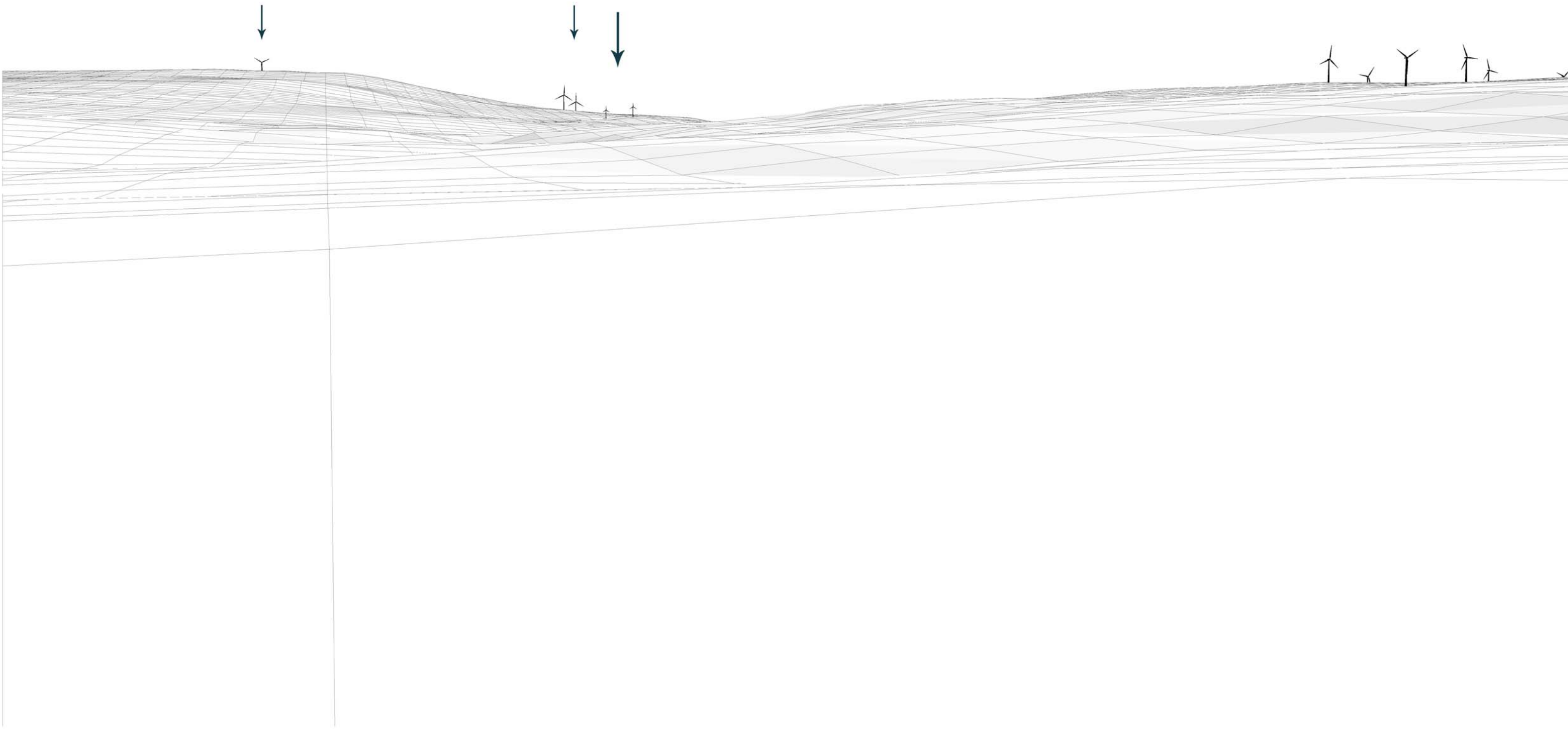
CAMERA SET-UP: Pentax K-r DSLR digital camera with an 18mm  
fixed focal length and a resultant horizontal field of view of 66 degrees

RECOMMENDED VIEWING DISTANCE - 305mm @ A3

1no. 80m high turbine (to tip) @  
Myreton Crossroads, Keith (07/01102/FUL)  
status: GRANTED

2no. 92.5m high turbines (to tip) @  
Netherton of Windyhills, Keith (09/00763/FUL)  
status: GRANTED and CONSTRUCTED

13no. 110m high turbines (to tip) @  
Aultmore Forest wind farm, Keith (07/02375/EIA)  
status: PENDING





# VIEW 12

Looking south from Deskford Community Hall / Squaredoch  
(turbine 1 obscured by trees)

CO-ORDINATES OF VIEW POINT - 350450E, 861398N

DISTANCE TO APPLICATION TURBINES - 2.86Km

ORIENTATION OF VIEW - 198degrees

PHOTOGRAPH DATE - 15th November 2012 (14:20pm)

CAMERA SET-UP: Pentax K-r DSLR digital camera with an 18mm  
fixed focal length and a resultant horizontal field of view of 66 degrees

RECOMMENDED VIEWING DISTANCE - 305mm @ A3

1no. 80m high turbine (to tip) @  
Myreton Crossroads, Keith (07/01102/FUL)  
status: GRANTED  
(obscured by trees)



2no. 92.5m high turbines (to tip) @  
Netherton of Windyhills, Keith (09/00763/FUL)  
status: GRANTED and CONSTRUCTED  
(partially obscured by trees)



13no. 110m high turbines (to tip) @  
Aultmore Forest wind farm, Keith (07/02375/EIA)  
status: PENDING

