

# School Travel Planning Explained



## **School Travel Planning Explained**

**The Moray Council is committed to ensuring that all schools in the local authority area have a School Travel Plan. This guide has been prepared to explain to teaching staff and parents what a School Travel Plan is and what support is available in preparing one.**

### **What is a School Travel Plan?**

A School Travel Plan is a simple written document which identifies the issues surrounding the journey your pupils make to and from school, sets out agreed aims to overcome these issues and outlines a series of practical steps to promote sustainable travel, road safety awareness and offer a range of learning opportunities along the way.

Schools create a School Travel Plan (STP) to show how they intend to make travel to and from their sites safer and more sustainable for pupils, parents and teachers. The STP document itself should link in with the school's development or improvement plan. The aims of a STP support various local and national policy objectives surrounding carbon reduction, increasing levels of activity, road safety, addressing congestion and social inclusion. It will link with Eco-Schools, Active Schools and Health Promoting Schools. However, a STP is a living document which must also address local and specific issues, be supported by a Travel Plan Group with senior management support, be kept under review and deliver real benefits to the users of a site and the surrounding community.

STPs are created in consultation with the whole school community. They are all very different, as each considers its local situation and current trends, issues and solutions.

### **What does it do?**

A good School Travel Plan will aim to do the following things:

- reduce the number of vehicles on the school run
- improve safety on the school journey
- encourage healthy and environmentally friendly travel choices

- increase awareness of sustainability issues
- promote learning opportunities

A school can use its School Travel Plan to demonstrate a real commitment to the promotion of health, environmental and community issues. It will help to support and define school policies in relation to travel.

The process of developing a School Travel Plan and the actions that follow can often serve as learning opportunities for pupils. These can include learning how to look at our physical environment, sustainability and health issues, community awareness, art, research and analytical skills and working in teams etc.

### **How is one created?**

A typical process would be to form a group involving pupils, parents, staff and other interested members of the local community.

Existing travel patterns must be examined through a survey to understand what the current situation is. This includes gathering information on how pupils, staff and others use a site. A walking audit will also help identify other issues. Are there parking issues? Is there safe access for all users?

The document itself begins with some background information on the school. Analysis of the audit and survey is summarised, aims are stated along with the creation of an action plan to achieve these. The final document should be quite short, eye catching and include the action plan. Pupil involvement can help with this. You can design a front cover using work produced by your students. Include photographs of the school site and local area that have been taken by the students and include quotes from your surveys and pieces of classroom work. Ideally each school will have a copy of their STP on their website.

It is important that each school maintain a commitment to promotion and keeping the Travel Plan under review with subsequent monitoring, including participating in the annual Hands up Survey.

### **Typical actions**

The range of actions in a STP will vary greatly depending on the specifics of each school. Examples include cycle parking, cycle training, maps showing safe routes to schools, Park and Stride drop off points promoted, Walking Buses, promoting car sharing and taking part in campaigns like Bike Week or Walk to School Week.

Promotional activity might include inviting the press to school events or the launch of the School Travel Plan.

### **What help is available?**

- Advice and support establishing a School Travel Group
- Assistance creating a survey
- Advice on suitable actions
- Support for relevant classroom activities
- Assistance seeking funding
- Support accessing engineering input where necessary
- Link to school transport operators
- A School Travel Plan template

### **Links to Curriculum for Excellence – Health and Well Being Framework**

The following text from Curriculum for Excellence guidance highlights the experiences and outcomes that are relevant to School Travel Planning.

“Learning through health and wellbeing promotes confidence, independent thinking and positive attitudes and dispositions. Because of this, it is the responsibility of every teacher to contribute to learning and development in this area.” *Building the Curriculum 1*

**Mental, emotional, social and physical wellbeing** - Experiences and outcomes for physical wellbeing:

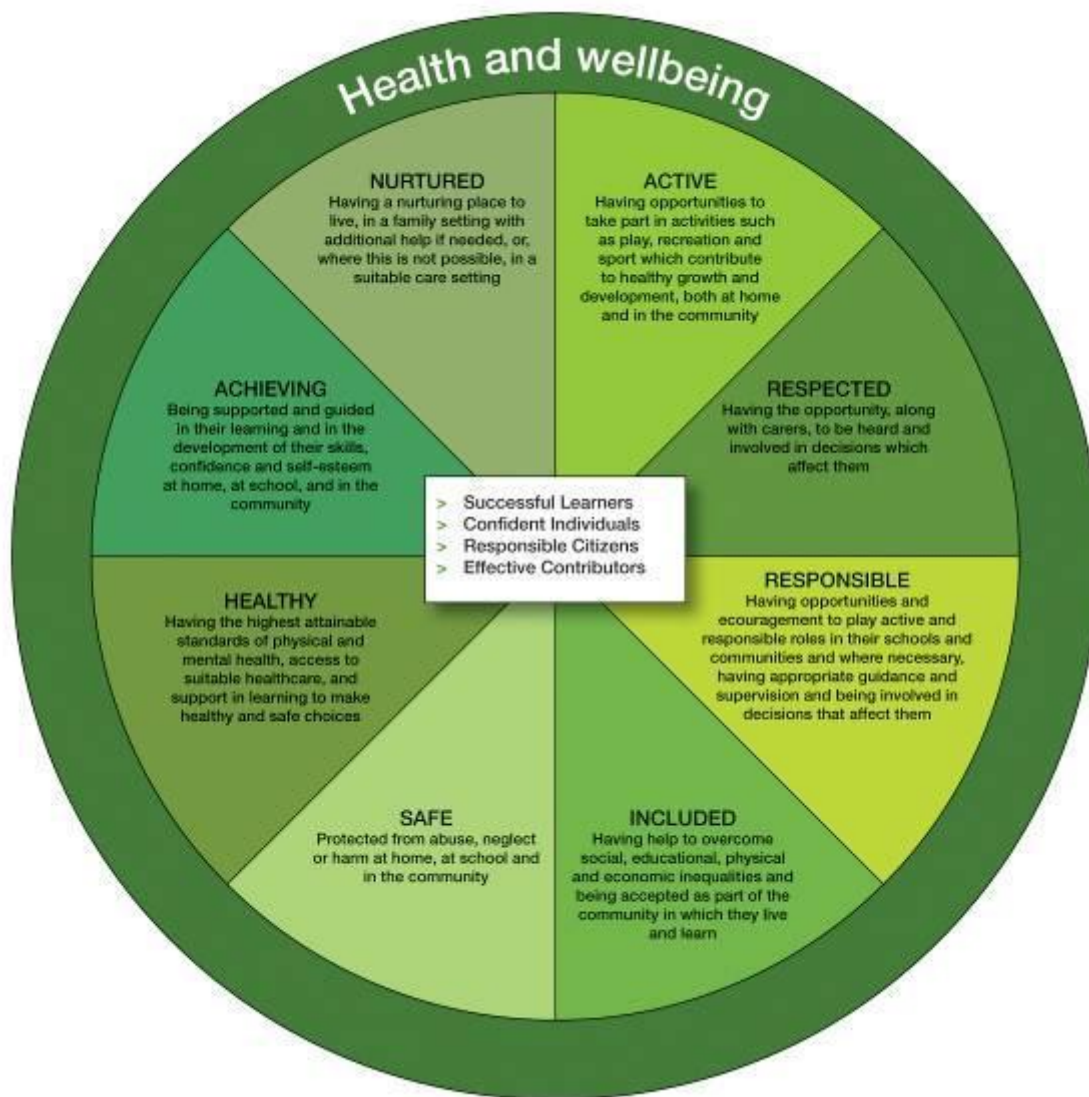
I am developing my understanding of the human body and can use this knowledge to maintain and improve my wellbeing and health.

I am learning to assess and manage risk, to protect myself and others, and to reduce the potential for harm when possible.

I know and can demonstrate how to keep myself and others safe and how to respond in a range of emergency situations.

I know and can demonstrate how to travel safely.

The diagram below illustrates the shared vision and common goal



For further information or advice please contact:

Andrew J Stewart, Sustainable Travel Officer

[Andrew.J.Stewart@moray.gov.uk](mailto:Andrew.J.Stewart@moray.gov.uk) or call 01343 563781