

Character Type and Development Opportunities

8a) Broad Forested Hills within Upland Farmland

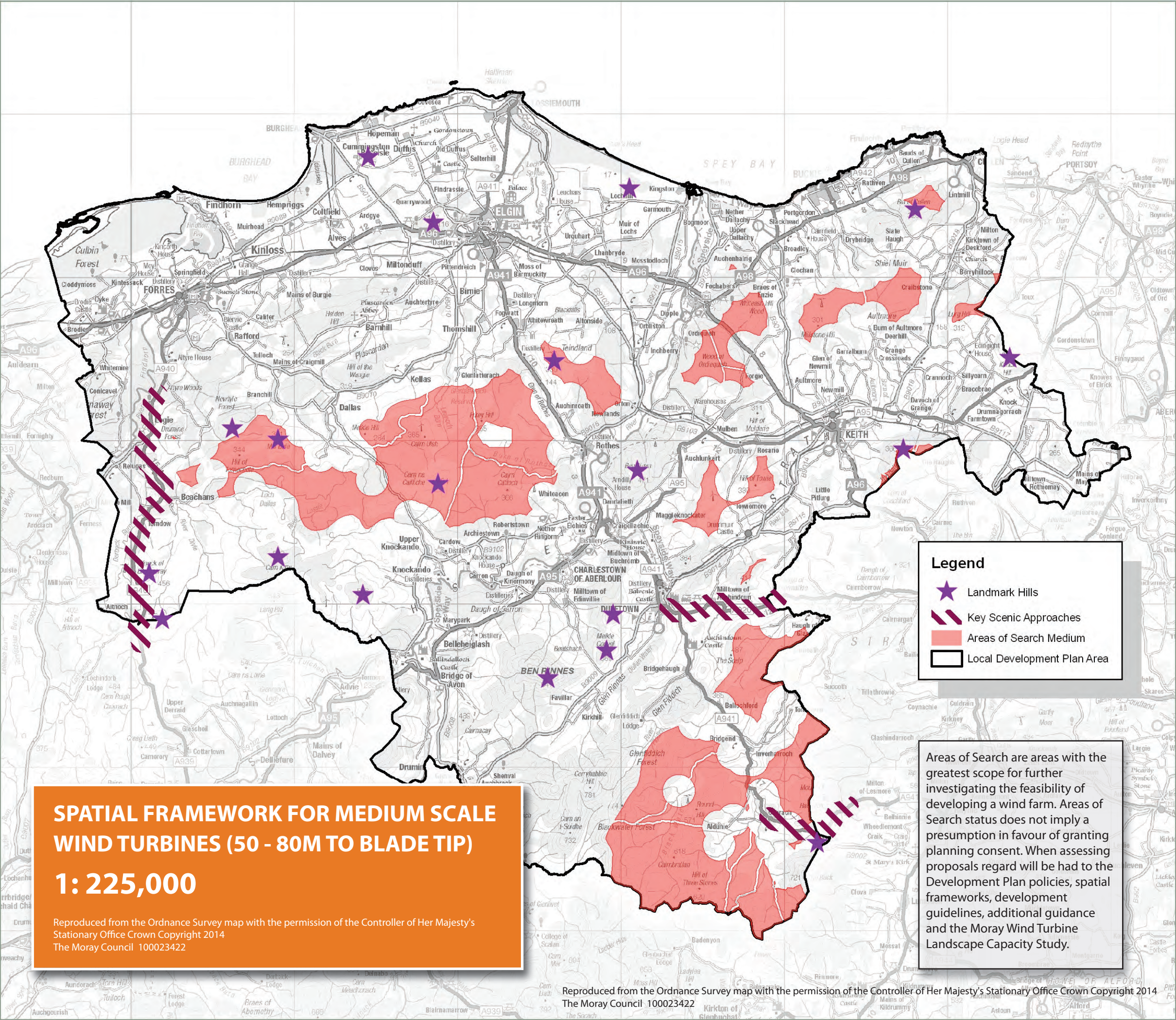
There is some scope to accommodate the medium typology (turbines 50-80m) within this landscape. Turbines should be set well back into the interior of the more extensive undulating upland plateau where gentle undulations in landform would provide a degree of containment and allow for adequate separation to occur, thus minimising intrusion on adjoining well-settled character types.

9. Upland Moorland and Forestry

Some limited scope to accommodate further large scale typologies. The more defined landmark hills of Brown Muir, Mill Buie and Carn na Cailliche should be avoided with development being sited in lower lying areas set well back into the interior of these uplands to minimise landscape and visual impacts on adjacent sensitive well settled and smaller scale landscapes. Small hills and ridges which lie on the outer fringes of these uplands and form the immediate skyline to smaller scale valleys should be avoided. Intrusion on the key approach along the A940 should be avoided. Proposals in western Moray should take account of potential effects on the Dava moor area and Special Landscape Areas in the Highland Council area.

10b Open Uplands with settled glens

Scope to accommodate further larger scale typologies in this character type is limited, largely due to the cumulative effects likely to arise in conjunction with the consented Dorenell and Clashindarroch wind farms and the sensitivities of siting large typologies within the narrow extent of remaining undeveloped upland areas.



SPATIAL FRAMEWORK FOR MEDIUM SCALE
WIND TURBINES (50 - 80M TO BLADE TIP)
1: 225,000

Reproduced from the Ordnance Survey map with the permission of the Controller of Her Majesty's Stationary Office Crown Copyright 2014
The Moray Council 100023422

Reproduced from the Ordnance Survey map with the permission of the Controller of Her Majesty's Stationary Office Crown Copyright 2014
The Moray Council 100023422