



## Travelling to Foresterhill Health Campus by bus





## Travelling to Aberdeen Royal Infirmary by bus

The Foresterhill Health Campus is well served by bus. All staff, patients and visitors are encouraged to use public transport where possible to help ease congestion. The map on the following page shows all buses that serve the Foresterhill Health Campus.

## Timetables

You can find full timetable and ticket information from local travel centres.

**First Aberdeen** – First Travel Centre  
47 Union Street, Aberdeen (open 09:00-17:30 Mon-Fri, 09:00-16:30 Sat) or online at [www.firstgroup.com/aberdeen](http://www.firstgroup.com/aberdeen).

## Stagecoach Bluebird –

Union Square Bus Station, Aberdeen (open Mon-Fri 08:00-18:45, Sat 09:00-17:00 and Sun 10:00-16:00), by phone on **01224 597591** or online at [www.stagecoachbus.com](http://www.stagecoachbus.com).

## Real time information

Real time information is currently available on First bus services.

You can check when your bus is due by going to [www.realtimebus.com](http://www.realtimebus.com), by downloading the Traveline Scotland App or by scanning the QR code or NFC tag at the bus stop with your smart phone.

Look out for this symbol at the bus stop

>>



## Tickets

Tickets can be purchased on bus from the driver (cash only), online (Stagecoach tickets) and in travel centres.

For First services you can take advantage of their new **M-Ticket** App which allows you to purchase and download your ticket onto your smartphone to show the driver on boarding. To find out more about this App go to [www.firstgroup.com/aberdeen](http://www.firstgroup.com/aberdeen).

Travelling from Aberdeenshire Stagecoach Zone 3 and require to change buses in the city?

You can purchase the multi-operator **Grasshopper ticket** enabling you to make the whole journey on one ticket.

Visit **[www.grasshopperpass.com](http://www.grasshopperpass.com)** for more information.

To get more information on travel in Aberdeen City and Shire visit:

**[www.get-about.com](http://www.get-about.com)**.





# Service numbers and Bus Stops to ARI

|   |  |   |
|---|--|---|
| <b>Service 35</b><br>Elgin to Aberdeen  | <b>Service 10</b><br>Inverness to Aberdeen   | <b>Service 37</b><br>Inverurie to Aberdeen  |
| <b>Operator: Stagecoach</b><br>Every 30 mins Mon-Sat<br>Hourly Sunday   | <b>Operator: Stagecoach</b><br>Every 30mins to Inverurie<br>Hourly to Inverness Mon-Sat<br>Hourly Sunday   | <b>Operator: Stagecoach</b><br>Every 20 mins Mon-Sat<br>Every 30 mins Sunday  |
| <ul style="list-style-type: none"><li>Elgin Bus Station</li><li>Fochabers</li><li>Buckie</li><li>Cullen</li><li>Portsoy Interchange</li><li>Banff Interchange</li><li>Macduff Interchange</li><li>Turriff Interchange</li><li>Oldmeldrum Interchange</li><li>Newmachar</li><li>Dyce</li><li>Ashgrove Road West</li><li><b>Aberdeen Royal Infirmary</b></li><li><b>Union Terrace</b></li><li><b>Aberdeen Bus Station</b></li></ul> | <ul style="list-style-type: none"><li>Inverness Bus Station</li><li>Nairn Bus Station</li><li>Brodie</li><li>Forres</li><li>Elgin Bus Station</li><li>Fochabers</li><li>Keith</li><li>Huntly Interchange</li><li>Colpy road end</li><li>Pitcaple</li><li>Inverurie Interchange</li><li>Ashgrove Road West</li><li><b>Aberdeen Royal Infirmary</b></li><li><b>Union Terrace</b></li><li><b>Aberdeen Bus Station</b></li></ul> | <ul style="list-style-type: none"><li>Inverurie Interchange</li><li>Port Elphinstone</li><li>Kintore</li><li>Blackburn</li><li>Bucksburn</li><li><b>Aberdeen Royal Infirmary</b></li><li><b>Union Terrace</b></li><li><b>Aberdeen Bus Station</b></li></ul> |
| <b>Service 94</b><br>ARI to Aberdeen Crematorium  |  |   |
| <b>Operator: Central Coaches</b><br>Approx every 40 mins from 09:00 and 15:55<br>No weekend service   |  |   |
| <ul style="list-style-type: none"><li><b>Aberdeen Royal Infirmary</b></li><li>Woodend Terminus</li><li>Aberdeen Crematorium</li></ul>   |  |   |

## FREE shuttle bus

NHS Grampian operates a shuttle bus service between a number of its hospital sites. The service is free of charge and available to staff, patients and visitors.

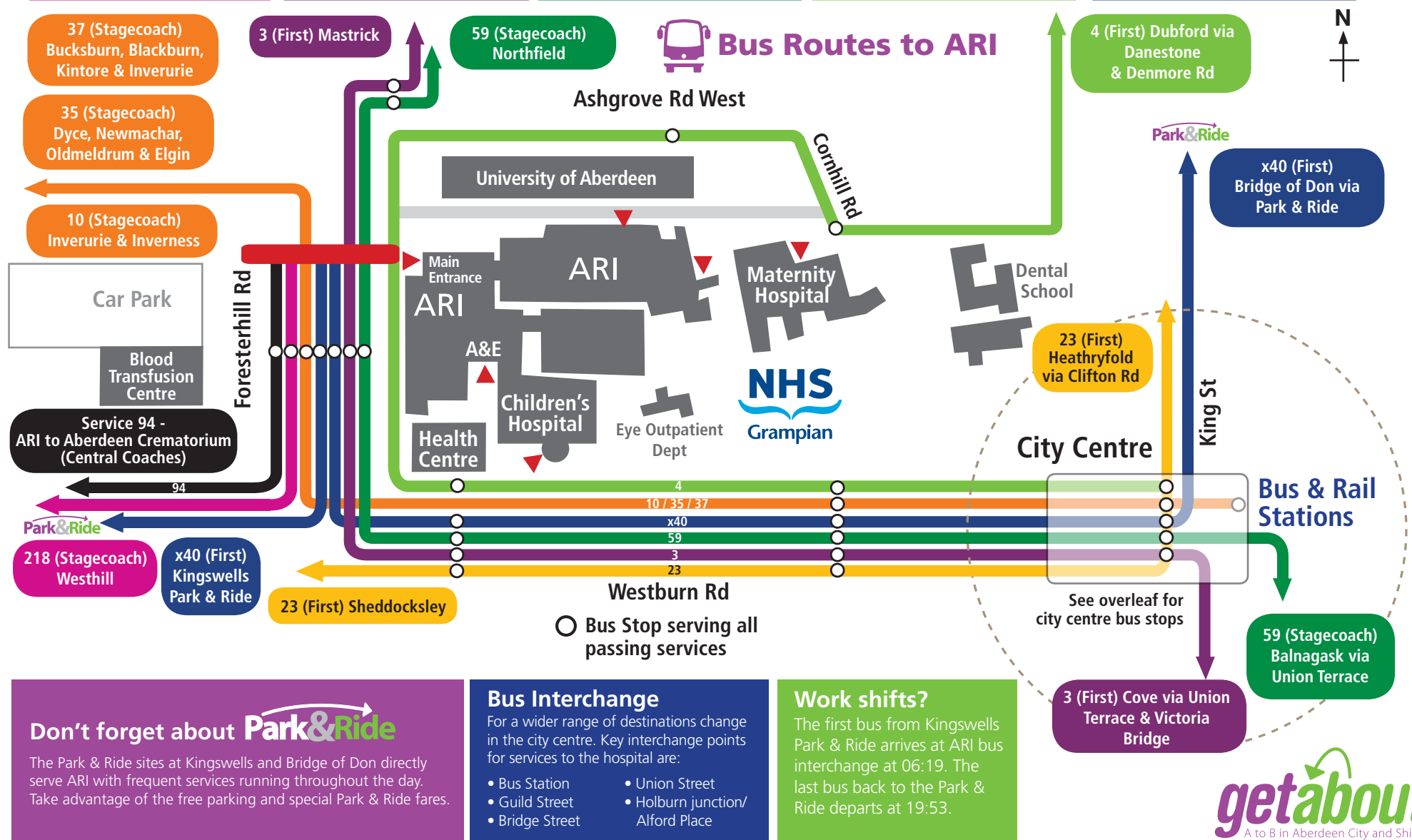
Services depart from the ARI main entrance and run

- **to Woodend Hospital and Summerfield House** approx every 30 mins to between 06:45 and 18:15
- **to Cornhill Hospital** every 20 mins between 09:15 and 14:45
- **to Frederick Street Health Village** approx every 30 mins between 08:15 and 15:30

Further information on this service can be found on the NHS Grampian website at [www.nhsgrampian.org](http://www.nhsgrampian.org) and clicking on 'planning your journey to ARI' or by picking up a leaflet at the main entrance.

|   |
|---|
| <b>Service 23</b><br>Heathryfold to Sheddocksley  |
| <b>Operator: First</b><br>Every 10 mins daytime and 30 mins evening Mon-Sat<br>Every 30 mins Sun  |
| <ul style="list-style-type: none"><li>Heathryfold</li><li>Manor Walk</li><li>Anderson Drive</li><li>Hilton</li><li>Clifton Rd</li><li>Kittybrewster</li><li>Causewayend</li><li>Mounthooly</li><li>King St (St Andrews Cathedral)</li><li><b>Union Street</b></li><li>Alford Place</li><li>Mile End</li><li><b>Aberdeen Royal Infirmary</b></li><li>Lang Stracht</li><li>Sheddocksley</li></ul> |

|  |  |  |  |  |
|--|--|--|--|--|
| <b>Service 218</b><br>Westhill to ARI via Lang Stracht   | <b>Service 3</b><br>Cove to Mastrick via Bridge Street   | <b>Service 59</b><br>Northfield to Balnagask via Union Terrace   | <b>Service 4</b><br>Dubford to Broad Street via ARI  | <b>Service x40</b><br>Kingswells Park & Ride to Bridge of Don Park & Ride and Dubford  |
| <b>Operator: Stagecoach</b><br>9 services a day Mon-Fri<br>No weekend service  | <b>Operator: First</b><br>Every 10 mins daytime and 30 mins evening Mon-Sat<br>Every 30 mins Sunday  | <b>Operator: Stagecoach</b><br>Every 10 mins Mon-Sat daytime<br>Every 20 mins Sunday daytime<br>Every 20 mins Mon-Sat evenings<br>Every 30 mins Sun evenings           | <b>Operator: First</b><br>Hourly Mon-Sat<br>No Sunday service  | <b>Operator: First</b><br>Every 15 mins peak and 20 mins off-peak<br>Mon-Sat, No Sunday service  |
| <ul style="list-style-type: none"><li>Westhill</li><li>Kingswells</li><li>Lang Stracht</li><li><b>Aberdeen Royal Infirmary</b></li></ul> | <ul style="list-style-type: none"><li>Cove, Charleston Road</li><li>Lochinch Avenue</li><li>Craigshaw Drive</li><li>Guild Street</li><li><b>Bridge Street</b></li><li><b>Aberdeen Royal Infirmary</b></li><li>Mastrick</li></ul> | <ul style="list-style-type: none"><li>Northfield</li><li><b>Aberdeen Royal Infirmary</b></li><li>Union Terrace</li><li><b>Guild Street</b></li><li>Balnagask</li></ul> | <ul style="list-style-type: none"><li>Dubford</li><li>Dubford Park</li><li>Danestone Primary School</li><li>Hilton Avenue</li><li><b>Aberdeen Royal Infirmary</b></li><li>Broad Street</li></ul> | <ul style="list-style-type: none"><li>Kingswells Park &amp; Ride</li><li>Lang Stracht</li><li><b>Aberdeen Royal Infirmary</b></li><li>Holburn Junction</li><li><b>Union Street</b></li><li>King Street</li><li>Bridge of Don Park &amp; Ride</li><li>Dubford</li></ul> |



## Other support and information

Patients who would like advice on travelling to and from medical appointments can contact the **Transport to Healthcare Information Centre (THInC)** for help. They provide practical transport advice for people who have difficulty getting to and from medical appointments in Grampian. THInC can be contacted on **01343 567 839 Mon-Fri 09:00-16:00**.

If you have mobility difficulties or a sensory impairment and would like companionship or support when using the bus, the **Sustainable Connections Transport Team (SCOTT)** may be able to help. Contact **01224 254 338** for more information.



**Traveline Scotland** can help you plan any public transport journey in Scotland. For all timetable information and help in planning your journey door to door you can also **visit [www.travelinescotland.com](http://www.travelinescotland.com)** or call **0871 200 22 33**.

Published September 2014

nestrans



First



Aberdeenshire  
COUNCIL

