



# transport guide





## FOREWORD

The Moray Forum is a constituted voluntary organisation that was established to provide a direct link between the Area Forums and the Moray Community Planning Partnership. The Forum is made up of two representatives of each of the Area Forums and meets on a regular basis. Further information about The Moray Forum is available on: [www.yourmoray.org.uk](http://www.yourmoray.org.uk)

Area Forums are recognised by the Moray Community Planning Partnership as an important means of engaging local people in the Community Planning process.

In rural areas - such as Moray - transport is a major consideration, so in September 2011 the Moray Forum held its first transport seminar to look at the issues and concerns that affect our local communities in respect of access to transport. Two actions that came from that event was the establishment of a Passenger Forum and a Transport Providers Network. This work was taken forward by the Moray Forum Transport Working Group made up of representatives of the Area Forums, Moray Council, NHS Grampian, tsiMORAY, and community transport schemes. In September 2013 the Working Group repeated the seminar to see how much progress had been made on the actions and issues identified in 2011.

As a direct result of the work of the Group this Directory has been produced in order to address an on-going concern that has been expressed of the lack of information on what transport is available in Moray, the criteria for accessing certain transport services, and where to go for further advice.

The Moray Forum Transport Working Group would like to acknowledge the help of all the people who provided information for this Directory, and thereby made a contribution towards the integration of public, private and community transport services within Moray.

Anita Milne  
*Chairperson*

**The Moray Forum, November 2014**



## Contents:

## Page

About this guide

P4

## Transport for individuals

P6

Cars

Community Car Schemes

British Red Cross - Transport and Escort Services  
RVS

Taxis and Private Hire Cars

Local Bus Services

Dial M for Moray

Rail Services

## Transport for groups

P10

Community Sector Minibuses

Moray Council Minibus Hire

Self-drive Hire

Bus/Coach Hire

## Help with Transport

P13

Travel Concessions

Hospital Patient Transport Assistance

THInC

## Dial M for Moray

P15

Operating Zones Map

## Your Area Information

P18 - P36

## Operator Index

P38 - P39

Community Bus

Self Drive Hire

Taxis & Private Hire Cars

Bus & Coach Hire

Rail Operators

Sources of Information and Advice

Bus Users Scotland

Traveline



# About this guide

This guide contains information for people travelling alone or as part of a group. It includes details about travel concessions and available help in addition to sources of information and advice related to transport. Contact information for community transport and commercial operators is provided in an index of schemes and operators.

This guide is split into two parts; the first part contains general information on all kinds of passenger transport available in Moray, the second part contains more detailed information listed area by area along with useful telephone numbers.

While every effort has been made to ensure the accuracy of the information included in this guide, we can only hope to provide a brief outline of the many different services available. Inclusion in this guide does not necessarily imply endorsement or approval of a particular operator or service. Details of services should be checked with the operators.



# Coach Hire For All Occasions!

## KINEIL COACHES LTD



**12 - 70 Seat Luxury Coaches**  
**49 Seat Executive Coaches**

**Contract, Private Hire and also  
 Local Bus Service  
 National and International Travel**

Weddings - School Trips - Football  
 Social Outings - Golf - European Trips

**We Have Over 40 Vehicles**

Anderson Place

**FRASERBURGH - 01346 510200**

26 Premier Road, Pinefield Industrial Estate

**ELGIN - 01343 552777**

**INVERURIE - 01467 679003**

## LOOKING FOR LOW COST CAR RENTAL?

**Car Rental**  
 from only  
**£25**  
 per day



Vast range of vehicles available:

- Cars
- People Carriers
- Estates • 4x4's
- Automatics

Seasonal Offers available  
 Call us for details

→ Ask about our Airport transfer service.

## Arnold Clark Car & Van Rental

ELGIN  
 EDGAR ROAD

ABERDEEN →  
 CANAL RD, MOUNTHOOLY

INVERNESS →  
 HARBOUR ROAD

Call central reservations on **0844 875 9759**

or visit **arnoldclarkrental.com**



BT calls 5p per minute, other providers may vary. Prices quoted are applicable to daily rental charges only and exclude any supplementary items. Model shown for illustrative purposes only. Terms and conditions, mileage and driver restrictions apply - contact branch for details. Arnold Clark reserves the right to refuse and to amend terms and conditions without notice. Airport transfer subject to availability and operating restrictions. 97562

# Transport for individuals

This section of the guide describes services available for those travelling as individuals using three forms of transport: cars, buses and trains.

## Cars

This section of the guide describes services available for those who wish to be driven.

There are a number of options available in Moray which are described below:

Community Car Schemes

British Red Cross

RVS

Taxis and Private Hire Cars

## Community Car Schemes

Community car sharing schemes extend informal car sharing by using an organiser and paid or voluntary drivers to broaden the network of lift availability beyond immediate family and neighbours. There is a list of drivers who use their own cars and are reimbursed for their expenses.

Many car schemes exist both in Moray and throughout the UK. Most schemes are independently organised and were established for different purposes. Eligibility criteria vary but restrictions are usually imposed, as there are rarely as many volunteers as the organiser would like.

Passengers usually make a contribution towards the costs of the scheme. The law on accepting fares in this way is quite specific, normally requiring compliance with bus, taxi or private hire legislation. However, since 1978 community car schemes have been exempt from these licensing arrangements. A volunteer driver must not make a profit from expenses, although the costs associated with running the car can be recovered.

An ordinary driving licence is all that is required and insurance schemes now accept that there is no formal need for extra premiums for such vehicle use. Schemes do, however, sometimes obtain additional insurance for their drivers, to cover any loss of no claims bonus for example.

Further information and advice on running community car schemes can be obtained from The Community Transport Association. See Transport Advice and Information section for contact details.

Speyside Car Share.....01340 831748





# British Red Cross – Transport and Escort Service

The British Red Cross offers a transport and escort service for those who have difficulty with movement or those who use non wheelchair transport by providing drivers with suitable vehicles, and escorts where needed.

British Red Cross.....01343 554340

## RVS

The Royal Voluntary Service offers a Social Transport Scheme using volunteer drivers and their own cars. Any length of journey is undertaken within reason, for medical, hospital, dental, shopping or social visits.

RVS Moray office.....01343 542862

## Taxis and Private Hire Cars

There are over 200 licensed taxis and private hire cars serving Moray. Vehicles range in size from four to eight passenger seats and some are wheelchair accessible. The vehicles offered as wheelchair accessible are varied and may involve wheelchair users facing forwards or rearwards. Enquiries should be made to operators for details of the vehicles available.

Taxis may be hired at rank, on street, or pre booked, but must be fitted with a meter. Of the taxis operating within the Moray area 10 are currently wheelchair accessible.

Private hire cars must be pre booked, by telephone or by calling at the operator's office.

Taxis and private hire cars are licensed by The Moray Council and some companies may operate both taxis and private hire cars.

Contact information for operators is included in the index under Taxis and Private Hire Cars.





## Local Bus Services

### Bus Services

There are bus services throughout Moray and excellent links east and west to Aberdeen and Inverness. Public bus services are provided by private operators either commercially or under contract to The Moray Council (for subsidised routes). Most of buses in the area have accessibility features such as low floors to make boarding easier for those with limited mobility or travelling with young children/pushchairs etc. Please contact the bus operator for more information.

Contact information for each of the main commercial bus/coach operators in the area is included in the operator index under Bus Operators.

## Dial M for Moray

### What is Dial M for Moray?

The Dial M for Moray is an accessible door to door Dial a Bus service (public roads only) for those who are unable to use existing forms of transport or who do not have a regular bus service. This service is for everyone regardless of age or disability.

More information is provided on pages 15 - 17, and contact information for Dial M is included in the index under Bus Operators.





## Rail Services

There are six railway stations in Moray, three forming part of the National Rail Network and three as part of a locally owned and operated preserved railway.

Elgin

Forres

Keith

Keith Town (Preserved Railway)

Drummuir (Preserved Railway)

Dufftown (Preserved Railway)

Services are operated by ScotRail, linking Aberdeen and Inverness with Elgin, Forres and Keith and connections are available from Aberdeen and Inverness to most UK railway stations.

Keith and Dufftown Railway Association operate a seasonal weekend service between Keith, Drummuir and Dufftown.

Booking offices are open as follows:

Elgin: Monday to Friday 0625 to 1930, Saturday 0625 to 1930 and Sunday 1025 to 1930.

Forres: Monday to Saturday 0746 to 1450 Closed Sunday.

Keith: Monday to Saturday 0653 to 1357, Closed Sunday.

Contact information for National Rail Enquiries, Scotrail and Keith Dufftown Railway Association is included in the operator index under Rail Operators.

## Ronnie's Cabs

ELGIN

Fast and friendly taxi service  
for long and short journeys.

**Call**  
**07899012296**



## Shopmobility Moray

59 HIGH STREET • ELGIN • IV30 1EE

OPENING TIMES - Tuesday – Saturday 10 am-4 pm

**ALL WELCOME**

There is a charge payable

Tel (01343) 552528 - Fax (01343) 552528

E-mail: [shopmobilitymoray@tiscali.co.uk](mailto:shopmobilitymoray@tiscali.co.uk)  
[www.shopmobilitymoray.co.uk](http://www.shopmobilitymoray.co.uk)

**DO YOU HAVE DIFFICULTY GETTING  
AROUND ELGIN?**

**WOULD YOU LIKE TO BORROW A  
WHEELCHAIR?**

**WOULD YOU LIKE TO BORROW AN  
ELECTRIC WHEELCHAIR?**

**WOULD YOU LIKE TO BORROW A  
SCOOTER?**

**WOULD YOU LIKE SOMEONE TO ASSIST  
YOU WHEN SHOPPING?**

**IF YOU ANSWER YES TO ANY OF THE  
ABOVE QUESTIONS THEN WHY NOT USE  
SHOPMOBILITY?**



# Transport for groups

This section of the guide describes the services available for group travel, including

- Minibuses owned and operated by community groups;
- Minibuses owned by The Moray Council;
- Self-drive hire;
- Bus/coach hire;

## Community Sector Minibuses

A number of minibuses in Moray are owned by community groups and operate on a not-for-profit basis. Some of the vehicles are owned and operated by specialist societies and organisations and used for that group's activities only. Others are based in the community and are more widely available to a range of local organisations, either with a driver or on a self-drive basis. Some vehicles may only be available to groups with similar aims, for example providing services for people with disabilities or for older people.

All minibuses are essentially public service vehicles. However, a special licensing arrangement means that a minibus with 9 – 16 seats can be operated under a Section 19 (Small Bus) Permit by not-for-profit organisations. Permits are issued by the Traffic Commissioner, Local Authority or designated national voluntary organisations. This means that the drivers do not need a vocational passenger carrying vehicle (PCV) licence to drive such a minibus, provided the driver is 21 or over and driving as a volunteer.

A Section 19 (Small Bus) Permit allows transport to be provided for:

- Members of the group which holds the permit;
- People for whom the group exists to benefit, and people helping them;
- Physically or mentally handicapped people, seriously ill people, and people assisting them;
- Pupils or students at school, college, university or other educational establishment and staff or other helpers accompanying them;
- Other groups specified in the Permit.

A Section 19 (Small Bus) Permit does not allow the carriage of the general public, so cannot operate a scheduled bus service without a PCV operators licence.

Community groups must be particularly careful to adhere to current legislation regarding minibus operation, including licensing of drivers. Information and advice can be obtained from the Community Transport Association or The Moray Council.

Contact information on minibuses available to community and voluntary groups is included in the operator index under Community Sector Minibus Schemes.



## Moray Council Minibus Hire

The Moray Council has a limited number of minibuses that may be available for self-drive hire or for hire with a driver. These are available to social, welfare, religious and other groups that benefit the community. Drivers must be approved by The Moray Council's Fleet Services section this includes an on road test.

## Self-drive Hire

A number of commercial operators hire out People Carriers (up to seven passenger seats) and Minibuses. Drivers must be aged 21 or over. Contact companies for details.

Contact information on The Moray Council and Self-drive hire is included in the operator index under Self-drive Hire

## Bus/Coach Hire

Buses and Coaches to seat from 9 to 70+ passengers can be hired with driver from a number of operators in the area.

Contact information on bus and coach hire is included in the operator index under Bus and Coach Hire.

# Deveron Coaches



**Buckie – 01542 836363**  
**Macduff – 01261 832912**  
Email – [deveroncoaches@hotmail.co.uk](mailto:deveroncoaches@hotmail.co.uk)

*Large selection of  
coaches available  
for Functions,  
Excursions and  
Weddings*



# SUNBANK TAXIS

LOSSIEMOUTH

FRIENDLY SERVICE - AIRPORT AND  
STATION JOURNEYS WELCOME



CALL US ON  
**01343 812378**

# GEOFF'S TAXI'S

**01343  
813358**

*Lossie's Local  
Friendly Service*

The **SMARTER** Way to Travel

**&R**

**54 54 56**

**24 HOURS GUARANTEED**

**2 x 8 Seater Minibuses**

*Contracts welcome*

# Help with Transport

## Travel Concessions

### Senior Citizens / Disabled Persons / Registered Blind and Partially Sighted National Entitlement Card.

Passes are available to men and women aged 60 years and over and eligible disabled persons. Forms for these are obtainable from all Council Access points and Libraries in Moray. Passholders travel free on all participating bus services operating within Scotland

## Hospital Patient Transport Assistance

### Scottish Ambulance Service Patient Transport Service

The Scottish Ambulance Service provides help to patients who need medical/clinical support to reach their healthcare appointment, or for their admission to and discharge from hospital.

Ambulance support is available for patients who:

- require assistance from skilled ambulance staff;
- have a medical condition that would prevent them from travelling to hospital by any other means;
- have a medical condition that might put them at risk from harm if they were to travel independently;
- are attending hospital for treatment that might have side effects and require ambulance care on the return journey.

Patients can request ambulance support up to 28 days in advance of their appointment by phoning the patient booking line on 0300 123 1236. If you are hard of hearing, deaf or speech impaired, you can contact the service through Text Relay on: 18001-0300 123 1236.

You can also ask your GP or carer to make the phone call on your behalf.



The Transport to Healthcare Information Centre (THInC) provides practical transport advice to people who have difficulty getting to and from medical appointments in the Grampian area.

The centre provides a dedicated telephone service offering guidance on accessing suitable transport options for the public to get to and from their appointments when they have no means of personal transport. The centre can provide details of suitable bus or train times, contact telephone numbers and other services such as local dial a bus or voluntary car schemes.

The centre can also provide information about concession schemes for travel to health appointments.

Opening hours Monday-Friday 0900-1600 (closed public holidays)  
Contact 01224 665568





# Dial *for Moray* m2

## What is Dial M for Moray?

The Dial M for Moray is an accessible door to door Dial a Bus service (public roads only) for those unable to use existing forms of transport or who do not have a regular bus service.

This service is for everyone regardless of age or disability.

Contact information for **Dial M for Moray** is included in the index under **Bus Operators**.

## Who can use Dial M for Moray?

You can use this service if you wish to travel in the areas shown on the map overleaf if no other bus service is available.

## Dial M for Moray vehicles

The vehicles are fully accessible. The seating arrangements are flexible to meet a variety of travel needs including wheelchairs.

All passengers are required to wear seatbelts.

## Where can I go?

This service operates in 5 Areas which cover most of Moray and we provide connections to other bus services. You will be required to change to another service for longer distance travel, which will incur an additional fare. You may travel anywhere within the area indicated on the zone maps (pages 19, 20 & 21) subject to no other bus service meeting your travel needs.

## When can I travel?

The service operates Monday to Friday at times shown in the leaflets, which are available online at [www.moray.gov.uk](http://www.moray.gov.uk), and from access points.

There will be no service December 25th, 26th, January 1st, 2nd and May Day each year.

## How do I book a seat?

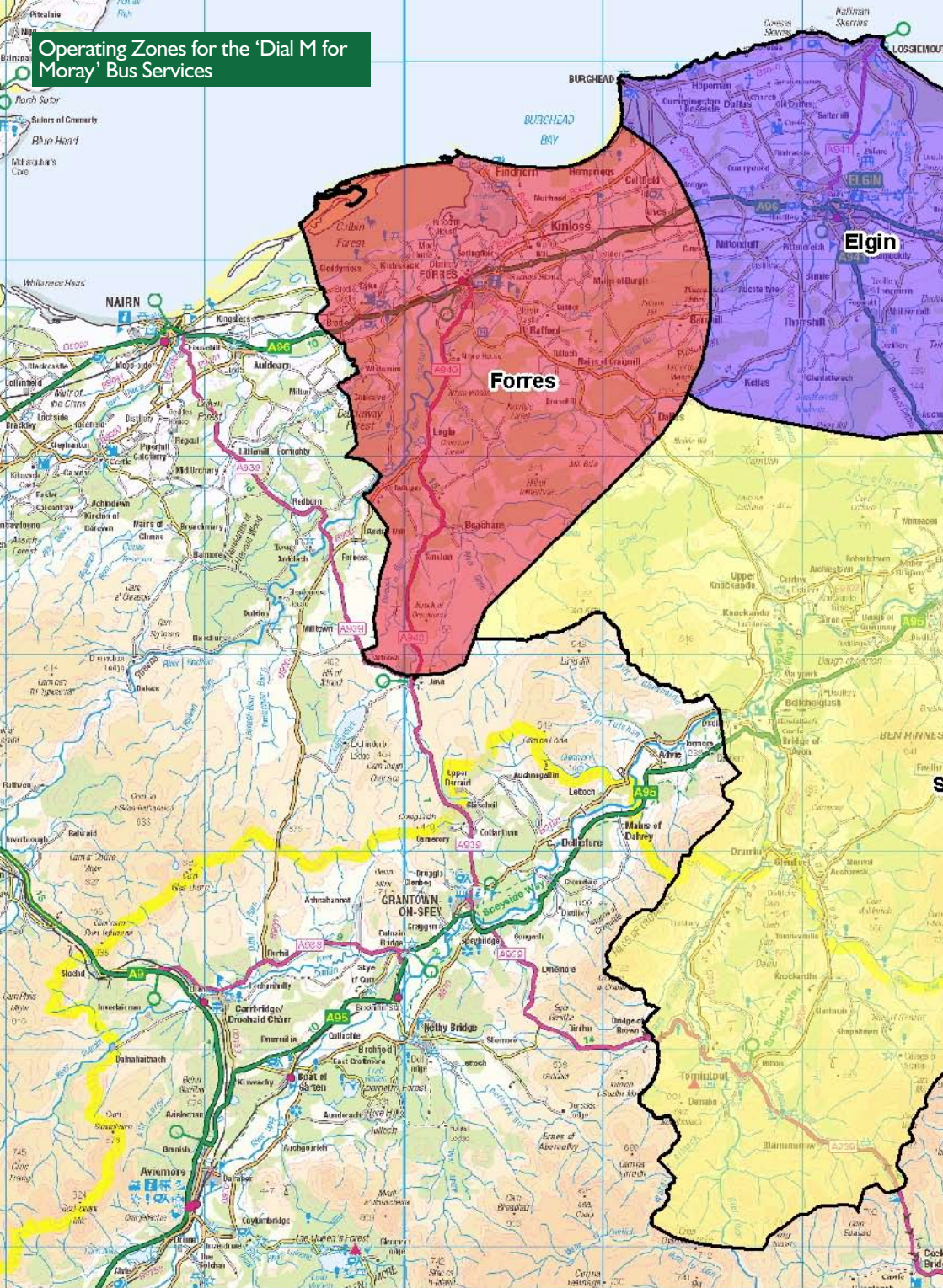
All Dial M for Moray journeys must be booked by phoning our booking line 0300 123 4565 between 0845 and 1700 Mondays to Fridays. Bookings can be taken up to seven days in advance but must be made no later than 1300 the day before you intend to travel. Every effort is made to meet your booking request at the time required but we book on a 'first come first served' basis and we may require to adjust your pick up time to fit in with the bus schedule. **Please be aware that the Dial a Bus booking system can alter scheduled pick up time by up to 15 minutes either way.** If you have an appointment please inform us when making your booking. Please remember that this is a bus service and that whilst our drivers will offer assistance with boarding and alighting they cannot be responsible to see passengers to, from or into customers property.

## How do I pay?

Fares will be similar to regular bus fares and customers will pay the driver. Scotland Wide Concession Card holders travel free on production of a valid concession card.

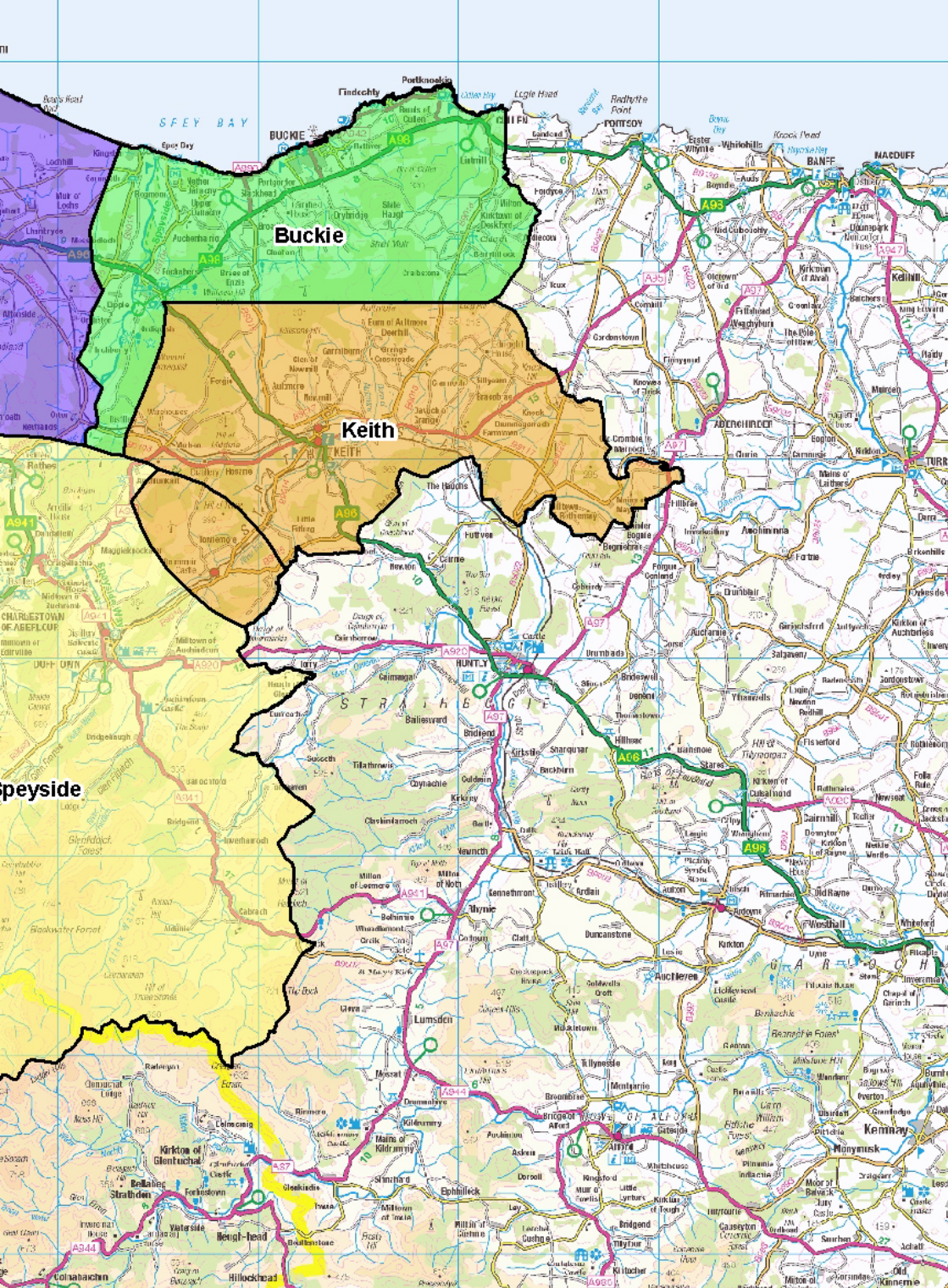


# Operating Zones for the 'Dial M for Moray' Bus Services



Reproduced from the Ordnance Survey map with the permission of the Controller





# Your Area Information

## ABERLOUR

### Service Buses:

#### Stagecoach Bluebird

Route 36 – Mon to Sat  
Craigellachie, Dufftown – Rothes, Elgin.

#### Deveron Coaches

Route 363 – Thursdays only  
Craigellachie Hotel, Rothes, Elgin – Tomnavoulin, Tomintoul.

#### The Moray Council

Route 338 – Mon to Fri School Days Only  
Carron.

### Dial M for Moray Speyside Area

Covers Speyside from Rothes to Tomintoul and Drummuir/Cabrach to Tormore  
and all areas in between.

**Taxis:** See Page 38

### Car Share:

Speyside Car Share  
Covers all Speyside and further.





# ALVES

## Service Buses:

### Stagecoach Bluebird

Route 10 – Daily

Forres, Nairn, Inverness – Elgin, Lhanbryde, Fochabers, Keith, Huntly, Inverurie, Aberdeen.

Route 11 – Mon to Sat

Elgin – Forres, Nairn, Inverness Airport, Inverness.

### Dial M for Moray Forres Area

Covers the Forres area between Pluscarden & Brodie, Findhorn & Dallas and all areas in between.

Taxis: See Page 38

# ARCHIESTOWN

## Service Buses:

### Dial M for Moray Speyside Area

Covers Speyside from Rothes to Tomintoul and Drummuir/Cabrach to Tormore and all areas in between.

Taxis: See Page 38

## Car Share:

Speyside Car Share

Covers all Speyside and further.



# BUCKIE

## Service Buses:

### Stagecoach Bluebird

Route 35 – Daily

Portgordon, Fochabers, Lhanbryde, Elgin – Cullen, Macduff, Turriff, Newmachar, Aberdeen.

Route 38 – Mon to Sat

Buckie Town Service.

### Dial M for Moray Buckie Area

Covers the Buckie area between Lintmill & Garmouth and Inchberry & Berryhillock and all areas in between.

## Community Bus:

BABS Dial a Bus

Taxis: See Page 38

# BURGHEAD

## Service Buses:

### Stagecoach Bluebird

Route 32 – Mon to Sat

Hopeman, Duffus, Elgin.

### Dial M for Moray Elgin Rural Area

Covers the Elgin Rural area between Burghead & Lossiemouth, Milntonduff & Lochhill and all areas in between.

Taxis: See Page 38





# CRAIGELLACHIE

## Service Buses:

### Stagecoach Bluebird

Route 36 – Mon to Sat  
Dufftown, Aberlour – Rothes, Elgin.

### Deveron Coaches

Route 363 – Thursday only  
Rothes, Elgin – Aberlour, Tomnavoulin, Tomintoul.

## Dial M for Moray Speyside Area

Covers Speyside from Rothes to Tomintoul and Drummuir/Cabrach to Tormore  
and all areas in between.

Taxis: See Page 38

## Car Share:

Speyside Car Share  
Covers all Speyside and further.



# CULLEN

## Service Buses:

### Stagecoach Bluebird

Route 35 – Daily

Buckie, Fochabers, Lhanbryde, Elgin – Macduff, Turriff, Newmachar, Aberdeen.

### Deveron Coaches

Route 351

Keith – School days only.

### Dial M for Moray Buckie Area

Covers the Buckie area between Lintmill & Garmouth and Inchberry & Berryhillock and all areas in between.

## Community Bus:

BABS Dial a Bus

Taxis: See Page 38



# CUMMINGSTON

## Service Buses:

### Stagecoach Bluebird

Route 32 – Mon to Sat  
Duffus, Elgin – Hopeman, Burghead.

### Dial M for Moray Elgin Rural Area

Covers the Elgin Rural area between Burghead & Lossiemouth, Milntown & Lochhill and all areas in between.

Taxis: See Page 38

# DALLAS

## Service Buses:

### Dial M for Moray Forres Area

Covers the Forres area between Plusscarden & Brodie, Findhorn & Dallas and all areas in between.

### Dial M for Moray Elgin Rural Area

Covers the Elgin Rural area between Burghead & Lossiemouth, Milntown & Lochhill and all areas in between.

Taxis: See Page 38



# DUFFTOWN

## Railways:

### Keith – Dufftown Railway (Preserved)

Dufftown, Drummuir Halt, Keith – Sat, Sun and some Fridays (Summer Only).

## Service Buses:

### Stagecoach Bluebird

Route 36 – Mon to Sat

Craigellachie, Aberlour, Rothes, Elgin.

### Deveron Coaches

Route 362 – Tuesday

Drummuir, Keith – Glenrinnies, Tomnavoulin, Tomintoul, Marypark, Aberlour.

## Dial M for Moray Speyside Area

Covers Speyside from Rothes to Tomintoul and Drummuir/Cabrach to Tormore and all areas in between.

**Taxis:** See Page 38

## Car Share:

Speyside Car Share

Covers all Speyside and further.

# DUFFUS

## Service Buses:

### Stagecoach Bluebird

Route 32 – Mon to Sat

Elgin – Hopeman, Burghead.

## Dial M for Moray Elgin Rural Area

Covers the Elgin Rural area between Burghead & Lossiemouth, Milntown & Lochhill and all areas in between.

**Taxis:** See Page 38



# DYKE

## Service Buses:

### Dial M for Moray Forres Area

Covers the Forres area between Pluscarden & Brodie, Findhorn & Dallas and all areas in between.

Taxis: See Page 38

# ELGIN

## Railways:

### Elgin Railway Station

Booking Office open – Mon-Sat 0625-1930 hrs and Sun 1025-1930 hrs  
Telephone: 08457 48 49 50 (24 hrs) or 0330 3030111.

## Service Buses:

### Stagecoach Bluebird

Route 10 – Daily

Alves, Forres, Nairn, Inverness – Lhanbryde, Fochabers, Keith, Huntly, Inverurie,  
Aberdeen Bus Station

Route 11 – Daily

Forres, Nairn, Inverness Airport, Inverness

Route 30A-30C – Mon to Sat

Bishopmill, Lesmurdie, Spynie Street.

Route 31 – Mon to Sat

Kinloss, Findhorn, Forres

Route 32 – Mon to Sat

Duffus, Hopeman, Burghead,

Routes 33A 33C – Daily

Manitoba, Thornhill, Bilbohall, Lossiemouth, RAF Lossiemouth

Route 34-34A – Mon to Sat

Lhanbryde, Urquhart, Garmouth, Kingston.

Route 35 – Daily

Lhanbryde, Fochabers, Buckie, Cullen, Macduff, Turriff, Newmachar, Aberdeen,

Route 36 – Mon to Sat

Rothies, Craigellachie, Aberlour, Dufftown



# ELGIN continued

## Deveron Coaches

Route 363 – Thursday only

Rothies, Craigellachie Hotel, Aberlour, Marypark, Tomnavoulin, Tomintoul.

## Dial M for Moray Elgin Rural Area

Covers the Elgin Rural area between Burghead & Lossiemouth, Milntown & Lochhill and all areas in between.

## Community Bus:

Laich of Moray Trust

Taxis: See Page 38

# FINDHORN

## Service Buses:

### Stagecoach Bluebird

Route 31 – Mon to Sat

Kinloss, Forres – Roseisle, Elgin.

## Dial M for Moray Forres Area

Covers the Forres area between Pluscarden & Brodie, Findhorn & Dallas and all areas in between.

Taxis: See Page 38





# FINDOCHTY

## Service Buses:

### Stagecoach Bluebird

Route 35 – Daily

Buckie, Fochabers, Lhanbryde, Elgin – Cullen, Macduff, Turriff, Aberdeen.

### Dial M for Moray Buckie Area

Covers the Buckie area between Lintmill & Garmouth and Inchberry & Berryhillock and all areas in between.

## Community Bus:

BABS Dial a Bus

Taxis: See Page 38

# FOCHABERS

## Service Buses:

### Stagecoach Bluebird

Route 10 – Daily

Lhanbryde, Elgin, Alves, Forres, Inverness – Keith, Huntly, Inverurie, Aberdeen.

Route 35 – Daily

Lhanbryde, Elgin – Buckie, Macduff, Turriff, Newmachar, Aberdeen.

### Dial M for Moray Buckie Area

Covers the Buckie area between Lintmill & Garmouth and Inchberry & Berryhillock and all areas in between.

## Community Bus:

BABS Dial a Bus

Taxis: See Page 38



# FORRES

## Railways:

### Forres Railway Station

Booking Office open – Monday to Saturday 0746-1450 hrs

Telephone: 08457 48 49 50 (24 hrs) or 0330 3030111.

## Service Buses:

### Stagecoach Bluebird

Route 10 – Daily

Nairn, Inverness – Alves, Elgin, Lhanbryde, Fochabers, Keith, Huntly, Inverurie, Aberdeen.

Route 11 – Mon to Sat

Nairn, Inverness Airport, Inverness – Elgin.

Route 31 – Mon to Sat

Findhorn, Kinloss, Roseisle, Elgin.

### Dial M for Moray Forres Area

Covers the Forres area between Pluscarden & Brodie, Findhorn & Dallas and all areas in between.

Taxis: See Page 38

# GARMOUTH

## Service Buses:

### Stagecoach Bluebird

Route 34 – 34A – Mon to Sat

Kingston, Urquhart, Lhanbryde, Elgin.

### Dial M for Moray Elgin Rural Area

Covers the Elgin Rural area between Burghead & Lossiemouth, Milnorduff & Lochhill and all areas in between.

## Community Bus:

BABS Dial a Bus

Taxis: See Page 38



# HOPEMAN

## Service Buses:

### Stagecoach Bluebird

Route 32 – Mon to Sat  
Duffus, Elgin – Burghead.

### Dial M for Moray Elgin Rural Area

Covers the Elgin Rural area between Burghead & Lossiemouth, Milntown & Lochhill and all areas in between.

Taxis: See Page 38

# KEITH

## Railways:

### Keith Railway Station

Booking Office open – Monday to Saturday 0730–1330 hrs  
Telephone: 08457 48 49 50 (24 hrs) or 0330 3030111.

### Keith - Dufftown Railway (Preserved)

Dufftown, Drummie Halt – Sat, Sun and some Fridays (summer only).

## Service Buses:

### Stagecoach Bluebird

Route 10 – Daily  
Fochabers, Lhanbryde, Elgin, Forres, Nairn, Inverness – Huntly, Inverurie, Aberdeen.

### Deveron Coaches

Route 362 – Tuesdays  
Drummuir, Keith, Glenrines, Tomnavoulin, Tomintoul, Marypark, Aberlour.

### Dial M for Moray Area

Covers the Keith Area between Rothiemay & Mulben and Aultmore & Drummuir and all areas in between.

## Community Bus:

BABS Dial a Bus

Taxis: See Page 38



# KINGSTON

## Service Buses:

### Stagecoach Bluebird

Route 34 – 34A – Mon to Sat

Garmouth, Urquhart, Lhanbryde, Elgin.

### Dial M for Moray Buckie Area

Covers the Buckie area between Lintmill & Garmouth and Inchberry & Berryhillock and all areas in between.

Taxis: See Page 38

# KINLOSS

## Service Buses:

### Stagecoach Bluebird

Route 31 – Mon to Sat

Findhorn, Forres – Roseisle, Elgin.

### Dial M for Moray Forres Area

Covers the Forres area between Pluscarden & Brodie, Findhorn & Dallas and all areas in between.

Taxis: See Page 38



# LHANBRYDE

## Service Buses:

### Stagecoach Bluebird

Route 10 – Daily

Elgin, Alves, Forres, Nairn, Inverness – Fochabers, Keith, Huntly, Inverurie, Aberdeen.

Route 34 – 34A – Mon to Sat

Garmouth, Kingston, Urquhart – Elgin.

Route 35 – Daily

Elgin – Fochabers, Buckie, Macduff, Turriff, Newmachar, Aberdeen.

### Dial M for Moray Elgin Rural Area

Covers the Elgin Rural area between Burghead & Lossiemouth, Milntonduff & Lochhill and all areas in between.

Taxis: See Page 38

# LOSSIEMOUTH

## Service Buses:

### Mayne's Coaches

Route 590

Elgin (St Sylvester's PS) – School days only.

### Stagecoach Bluebird

Route 33A-33C – Daily

Elgin, Manitoba, Thornhill, Bilbohall, RAF Lossiemouth.

### Dial M for Moray Elgin Rural Area

Covers the Elgin Rural area between Burghead & Lossiemouth, Milntonduff & Lochhill and all areas in between.

Taxis: See Page 38





# MOSSTODLOCH

## Service Buses:

### Stagecoach Bluebird

Route 10 – Daily

Lhanbryde, Elgin, Forres, Nairn, Inverness, Keith, Huntly, Inverurie, Aberdeen.

Route 35 – Daily

Lhanbryde, Elgin – Fochabers, Buckie, Macduff, Turriff, Newmachar, Aberdeen.

### Dial M for Moray Buckie Area

Covers the Buckie area between Lintmill & Garmouth and Inchberry & Berryhillock and all areas in between.

Taxis: See Page 38

# NEWMILL

## Service Buses:

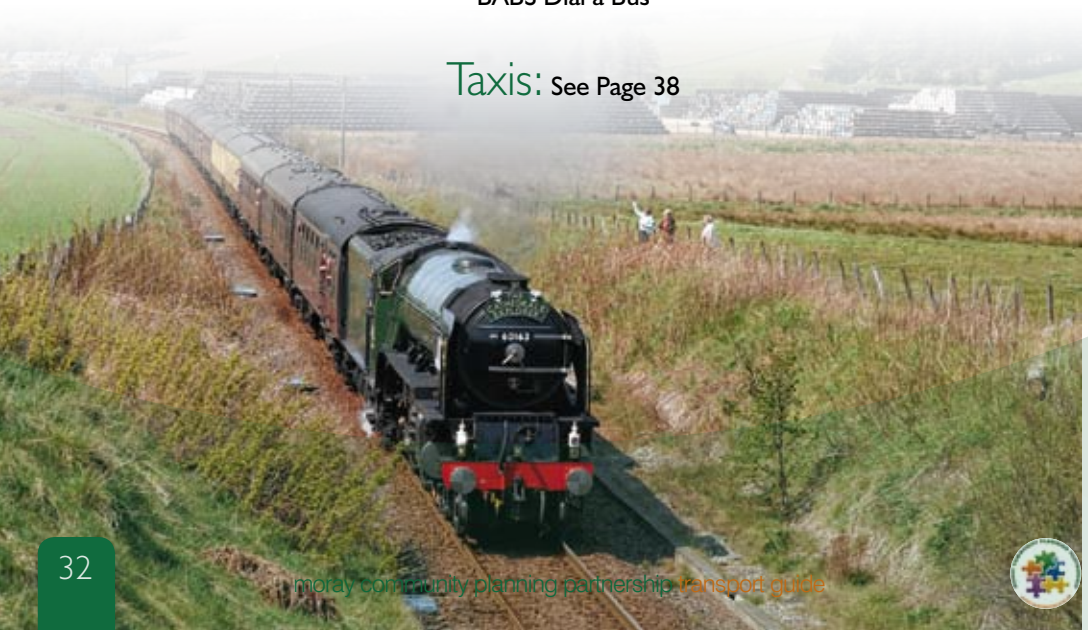
### Dial M for Moray Keith Area

Covers the Keith Area between Rothiemay & Mulben and Aultmore & Drummuir and all areas in between.

## Community Bus:

BABS Dial a Bus

Taxis: See Page 38



# PORTGORDON

## Service Buses:

### Stagecoach Bluebird

Route 35 – Daily

Fochabers, Lhanbryde, Elgin – Buckie, Macduff, Turriff, Newmachar, Aberdeen.

### Dial M for Moray Buckie Area

Covers the Buckie area between Lintmill & Garmouth and Inchberry & Berryhillock and all areas in between.

## Community Bus:

BABS Dial a Bus

Taxis: See Page 38

# PORTKNOCKIE

## Service Buses:

### Stagecoach Bluebird

Route 35 – Daily

Buckie, Fochabers, Lhanbryde, Elgin – Cullen, Macduff, Turriff, Aberdeen.

### Dial M for Moray Buckie Area

Covers the Buckie area between Lintmill & Garmouth and Inchberry & Berryhillock and all areas in between.

## Community Bus:

BABS Dial a Bus

Taxis: See Page 38



# RAFFORD

## Service Buses:

### Dial M for Moray Forres Area

Covers the Forres area between Pluscarden & Brodie, Findhorn & Dallas and all areas in between.

Taxis: See Page 38

# ROTHERS

## Service Buses:

### Stagecoach Bluebird

Route 36 – Mon to Sat

Elgin – Aberlour, Craigellachie, Dufftown.

### Deveron Coaches

Route 363 – Thursday only

Elgin – Aberlour, Tomnavoulin, Tomintoul.

### Dial M for Moray Speyside

Covers Speyside from Rothes to Tomintoul and Drummuir/Cabrach to Tormore and all areas in between.

## Car Share:

Speyside Car Share

Covers all Speyside and further.

Taxis: See Page 38

# ROTHIEMAY

## Service Buses:

### Dial M for Moray Keith Area

Covers the Keith Area between Rothiemay & Mulben and Aultmore & Drummuir and all areas in between.

Taxis: See Page 38



# SPEY BAY

## Service Buses:

### Dial M for Moray Buckie Area

Covers the Buckie area between Lintmill & Garmouth and Inchberry & Berryhillock and all areas in between.

## Community Bus:

BABS Dial a Bus

## Taxis: See Page 38

# TOMINTOUL

## Service Buses:

### Deveron Coaches

Route 362 – Tuesday

Tomnavoulin, Dufftown, Drummuir, Keith.

Route 363 – Thursday

Tomnavoulin, Marypark, Aberlour, Craigellachie, Rothes, Elgin (Rail Station), Elgin (Bus Station).

### Dial M for Moray Speyside

Covers Speyside from Rothes to Tomintoul and Drummuir/Cabrach to Tormore and all areas in between.

## Car Share:

Speyside Car Share

Covers all Speyside and further.

## Taxis: See Page 38



# URQUHART

## Service Buses:

### Stagecoach Bluebird

Route 34 – 34A – Mon to Sat  
Elgin, Lhanbryde – Garmouth, Kingston.

### Dial M for Moray Elgin Rural Area

Covers the Elgin Rural area between Burghead & Lossiemouth, Miltonduff & Lochhill  
and all areas in between.

Taxis: See Page 38





# ***The Whisky Line***

## ***Keith & Dufftown Railway***



**Open weekends from Easter to September, plus Fridays in June, July & August.**

**Come and enjoy a day out on the Whisky Line. There's a full season of Special events, starting with an Easter Egg Hunt. Spring and autumn Whisky Festivals, a 1940s weekend In June and ending with a Ghost Train In October and Santa Specials in December**

**We welcome group bookings and have disabled Facilities at both stations.**

Further details on our website:

**[www.keith-dufftown-railway.co.uk](http://www.keith-dufftown-railway.co.uk)**

01340 821181 (weekends) or 01343 870429 (weekdays)

## **Over 60 and struggling with repair costs?**

**Help is at hand!**

Moray Care and Repair is a free service which helps owner-occupiers keep their properties wind, water tight and free from structural instability.

The type of repairs we can help with include:

- Roof repairs including replacement gutters and downpipes
- Repairing external walls including pointing, harling and structural repairs
- Electrical re-wiring
- Replacing main access doors and windows
- Eradication of rising or penetrating damp
- Other housing repairs may also be considered

In order to qualify, you must normally be a home owner and be over 60 years old.

To apply, please call **Moray Council's Home Improvement Team** on **0300 123 4566**, and we will make an initial assessment over the phone. If we think you might qualify, we will visit you at home and carry out an inspection to determine the works required.



# Operator Index

## Community Bus

Dial M for Moray	0300 123 4565
BABS Dial a bus	01542 835800
Laich of Moray Trust	01343 544987
Forres Osprey Trust	01309 672355
Keith Community Group	01542 882028
Lossiemouth Senior Citizens	01343 812064
Buckie High School	01542 832605

## Self Drive Hire

Arnold Clark	Elgin	01343 552499
High Street Motors	Buckie	01542 833763/832300
Macrae & Dick	Elgin	01343 552771/542176
Practical Car Rental	Elgin	01343 546647

## Taxis & Private Hire Cars

A2B Cabs	Elgin	01343 843843
AI Cabs	Elgin	01343 569169
Ace Taxis	Mosstodloch	01343 820820
Buckie Taxis	Buckie	01542 836009
C & R Taxis	Elgin	01343 545456
C&K Cabs	Elgin	07857 857117
C U There	Aberlour	01340 871217
Christina's Taxis	Lossiemouth	01343 812174
Elgin Cabs	Elgin	07904 285623
Forres Taxis	Forres	01309 672353
Grays Taxis	Keith	01542 880399
Grant's Taxis	Buckie	01542 832084
G Cabs	Buckie	01542 839842
Innes Taxis	Buckie	01542 831529
Inverene Taxis	Lossiemouth	01343 812856
Len's Taxis	Forres	01309 673363
Lossie Taxis	Lossiemouth	01343 815999
Moray Taxis	Elgin	01343 545454
Mundole Taxis	Forres	01309 673168
Pat's Taxi Service	Lossiemouth	01343 813818
Ronnies Cabs	Elgin	01343 546735
Sunbank Taxis	Lossiemouth	01343 812378
Tawse Taxis	Roths	07725 995277
Tornado Taxis	Elgin	01343 542224
Walker's Taxis	Lossiemouth	01343 812940

**Several operators have wheelchair accessible vehicles. Please check directly with them.**



## Bus & Coach Hire

Deveron Coaches	01542 836363
Keir's Coaches	01466 700283
Kineil Coaches	01343 552777
Maynes of Buckie	01542 831219
Mundole Taxis	01309 673168
Deveron Coaches	01542 882482
Stagecoach Bluebird	01343 544222
Dial M for Moray	0300 1234565

## Rail Operators

National Rail Enquiry Line	08457 48 49 50 (24 hours)
ScotRail	08457 55 00 33
Keith and Dufftown Railway Association	01340 821181

## Sources of Information and Advice

Community Transport Association

[www.ctaonline.org.uk](http://www.ctaonline.org.uk)

John MacDonald

CTA Scotland

54 Manor Place

Edinburgh

0131 220052

[john@ctauk.org](mailto:john@ctauk.org)

Sheila Fletcher

CTA Scotland

PO Box 5734

Evanton, Ross-shire

01349 830724

[Sheila@ctauk.org](mailto:Sheila@ctauk.org)

## Bus Users Scotland

Bus Users Scotland gives bus passengers a voice. We communicate with all the major bus companies and a most of the smaller ones too, of their trade organisation and of the Government and local authorities. We organize "Your Bus Matters" events to give you chance to talk to local bus companies and we help out if things have gone wrong for you on a bus or express coach. BUS USERS Scotland is not aligned to any political party.

Telephone: 0300 111 0001 • Email [enquiries@bususers.org](mailto:enquiries@bususers.org)

## Traveline

Traveline operates a national transport information service, which covers all aspects of public transport across Scotland.

Public Transport Traveline: 0871 200 22 33 • Web site [www.travelinescotland.com](http://www.travelinescotland.com)



# **A2B CABS**

## **01343 556655**

A2B Cabs have been operating for over 10yrs and are one of the largest taxi businesses in Moray. Having over 20 vehicles, cars, minibuses and wheelchair minibuses which is an area of expertise for us with all drivers MIDAS trained and wheelchair access trained. We operate several businesses which are all part of **A2B CABS** as shown below.



One of our minibuses with the wheelchair conversion. An 8 seater minibus or 5 seater and 1 wheelchair.

We also have trailers for airport transfers, golfing holidays or when you have just bought too much! Also large Tow a Van for hire if required, ideal for small removals or short term storage.



Our Hackney Garage is fully equipped, we supply and fit taxi meters, carry out repairs and also offer breakdown recovery.

## **GRANTS TAXIS BUCKIE**

Part of **A2B CABS**, Grants Taxis have operated for over 20yrs in Buckie. Ideally situated on the coast, this gives us great flexibility and coverage of the Moray area. Grants offer airport and crewing transport to the oil industry.

**TEL: 01542 83 20 84**

4, 6 & 8 Seaters available.  
Contract hire undertaken, please phone for a quote!!