

**REPORT TO: CHILDREN & YOUNG PEOPLE'S SERVICES COMMITTEE ON
9 JUNE 2010**

**SUBJECT: OUT OF AREA PLACEMENTS AND ADDITIONAL RESOURCE
PACKAGES**

BY: DIRECTORS OF COMMUNITY & EDUCATIONAL SERVICES

1. REASON FOR REPORT

- 1.1 To provide Children & Young People's Services Committee with background information on out of area placements and additional resources packages for children and young people with exceptional needs.
- 1.2 This report is submitted to Committee in terms of Section E(1) of the Council's Administrative Scheme relating to exercising the functions of the Council as a Social Work Authority.

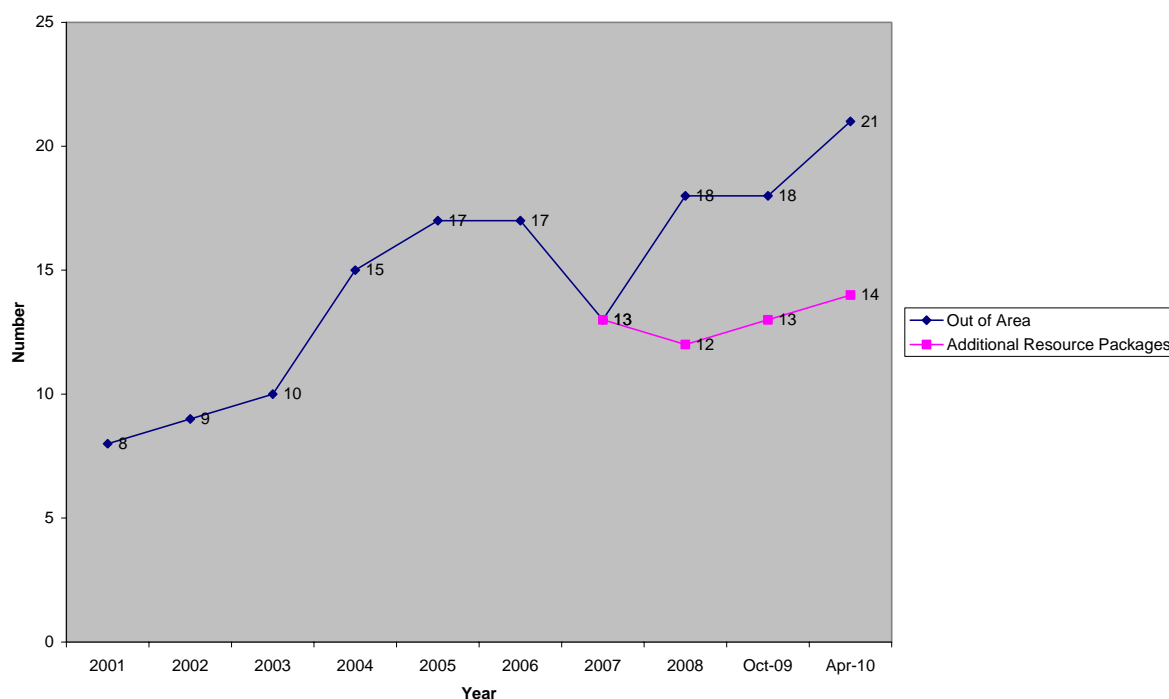
2. RECOMMENDATION

- 2.1 **It is recommended that Committee notes and scrutinises the information provided on out of area placements and additional resource packages.**
- 2.2 **Reason for confidentiality - this report contains information relating to supervision of any particular child and in terms of negotiations for a contract.**

3. BACKGROUND

- 3.1 Council committees have received background reports on out of area placements, additional resource packages and related matters. The Children & Young People's Services Committee also receives regular financial monitoring reports that cover out of area placements and additional resource packages. At the 2 December 2009 meeting a comprehensive report on the subject was tabled (paragraphs 25 & 30 of the minute refer) and it was agreed twice-yearly follow-up reports would be provided
- 3.2 The number of out of area placements has grown since 2001 and additional resource packages were instigated in 2007. The service demands are represented graphically in **FIGURE 1**.

Figure 1 – Number of Out of Area Residential Placements & Additional Resource Packages



The April 2010 figure represents:-

- 12 residential placements for young people with social, emotional and behavioural difficulties and 9 educational placements requested by parents for children with particular disabilities (21 placements in total); and
- 3 joint social work and education additional resource packages (and 1 social work only) to support children with disabilities and 10 to maintain other children in school (14 packages in total).

3.3 Outline details of children in out of area placements, foster placements provided by external agencies, Level 4 (Choices for Children) fostering provided by the Moray Council and children supported by additional resource packages are provided in **APPENDIX 1**.

3.4 The following actions have been progressed since the December 2009 report.

- Moray Kinship Care Scheme is being reported to 9 June Children & Young People's Services Committee for approval.
- Placement Services Group and Additional Resource Management Group have been formed to provide increased scrutiny of case planning and expenditure.
- A contract for use with external providers has been consulted on and is ready to be operationalised.
- A social worker will be appointed to develop the Choice for Children (Level 4 Fostering) Scheme by four placements in the next year to eighteen months. At this time a number of children have been identified who might benefit from this service development. Possible options include two young people currently in out of area placements and three young people currently in placements in Moray, who may be at risk of needing external placements. Issues such as the needs of the young people and matching those needs with the skills of the potential carers will inform which placements will be made.

- An audit of provision locally for children and young people who have particularly challenging behaviour is underway and a draft report is expected in early autumn.
- The Inclusion and Support Services manager has worked with the consultation group to identify a range of outcomes for children with behavioural needs and to define a structure to achieve those outcomes. This should be finalised and ready for consultation at the start of next term with a view to implementing changes from August 2011.
- Three schools in Moray [1 x secondary and 2 x primaries] have been accepted to work towards accreditation with the National Autistic Society.

4. **SUMMARY OF IMPLICATIONS**

(a) Single Outcome Agreement/Service Improvement Plan

This report relates to National Outcome 8 of the Single Outcome Agreement – improving life chances of children at risk.

(b) Policy and Legal

The Council has responsibilities to children through the Education (Additional Support for Learning) (Scotland) Act 2004, Children (Scotland) Act 1995 and Disability Discrimination Act 1995.

(c) Resources (Financial, Risks, Staffing and Property)

Financial

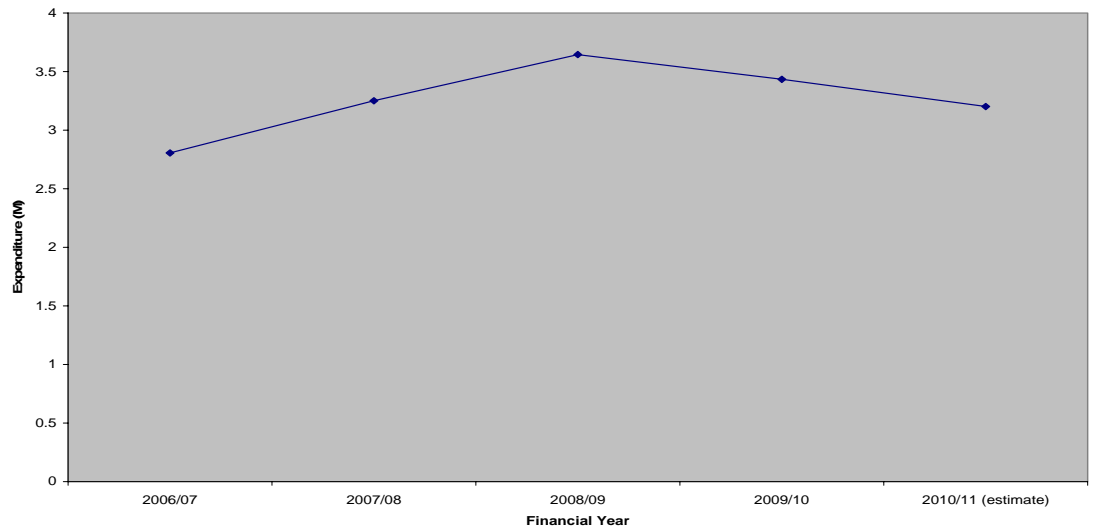
The expenditure in out of area placements and additional resource packages is summarised in **TABLE 1**.

Table 1 – Expenditure on Out of Area Placements and Additional Resource Packages

Financial Year	Expenditure
2006/07	£2,805,444
2007/08	£3,250,984
2008/09	£3,644,911
2009/10	£3,433,568
2010/11 (estimate)	£3,201,724

The expenditure is shown graphically in **FIGURE 2**.

Figure 2 – Expenditure on Out of Area Placements and Additional Resource Packages



Risks

Without services and planning to meet needs locally there will be a greater increase in the use of out of area placements.

Staffing & Property

There are no direct staffing or property implications associated with this report.

(d) Consultations

Katrina McGillivray, Senior Personnel Adviser, Deborah Brands, Principal Accountant and Rhona Gunn, Acting Principal Solicitor (Litigation and Licensing) have been consulted in the preparation of this report and are in agreement with the content relating to their areas of responsibility.

5. CONCLUSION

5.1 This report aims to provide further up to date information on out of area placements, total cost packages and the continuing actions being taken to manage these arrangements across social work and education services.

Author of Report: John Carney, Head of Children & Families and Criminal Justice Services

Richard Donald, Acting Head of Educational Support Services

Background Papers: with author

Ref: HB775253

