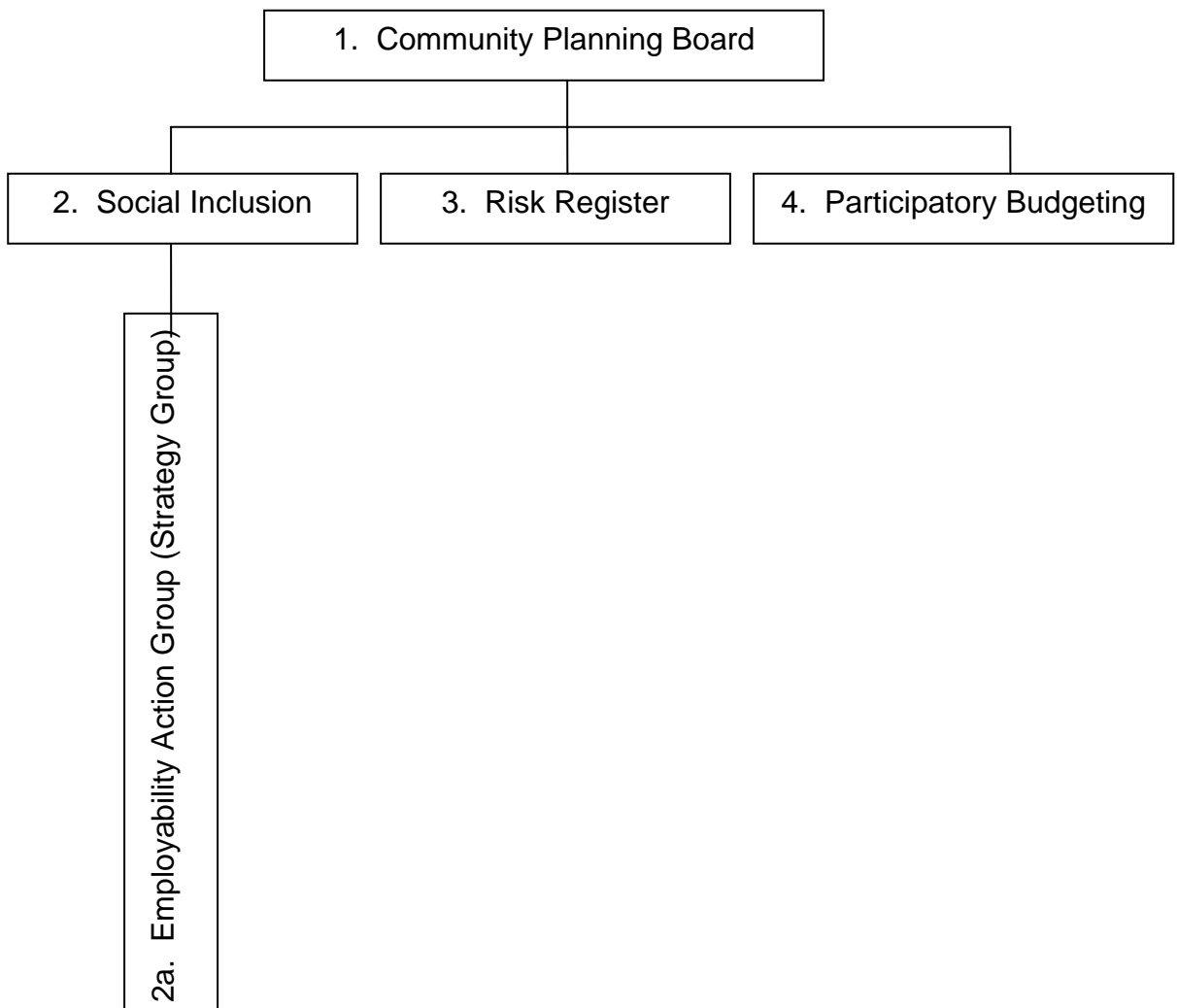


**Review of Community Planning Board Operational Groups**  
**As at November 2009**



## **REMIT & MEMBERSHIP**

### **2. Social Inclusion Implementation Group**

#### **Remit**

To manage the delivery of actions required to meet the priorities and include members at a senior level in partner organisations.

#### **Membership**

Community Services (Housing)  
Educational Services  
Grampian Fire and Rescue Services  
Grampian Police  
Highlands and Island Enterprise  
Moray College  
Moray Council Equalities Officer  
Moray Health and Social Care partnership  
Moray Voluntary Services Organisation  
Skills Development Scotland

### **2a. Employability Action Group (Strategy Group)**

#### **Remit**

To develop the Moray employability agenda and meeting the targets of 2 strategies – More Choices More Chances and Workforce plus.

#### **Membership**

Educational Psychology  
Highlands and Islands Enterprise  
Highland Employer Coalition  
Jobcentre plus  
Learning Disability team  
Moray Council - Education (Head of Educational Services/ Head of Educational support services)  
Moray College  
Moray Council - Fairer Scotland Fund Manager  
Moray Council Housing (Homeless section)  
Moray Council Social Work (Childrens and Families and Community Services)  
Skills Development Scotland  
Moray Health and Social Partnership  
Moray Voluntary Services Organisation

### **3. Risk Register**

#### **Remit**

To develop the risk register.

#### **Membership**

Grampian Fire and Rescue – Rae Cameron  
Grampian Police - Sharon Milton  
HIE – Ian Fraser  
Moray Council - Atholl Scott,  
Moray Council - Bridget Mustard

#### **4. Participatory Budgeting**

##### Remit

To design and deliver the project.

##### Membership

Grampian Police

Highlands & Islands Enterprise

Moray Council

Moray Voluntary Service Organisation

Youth Council