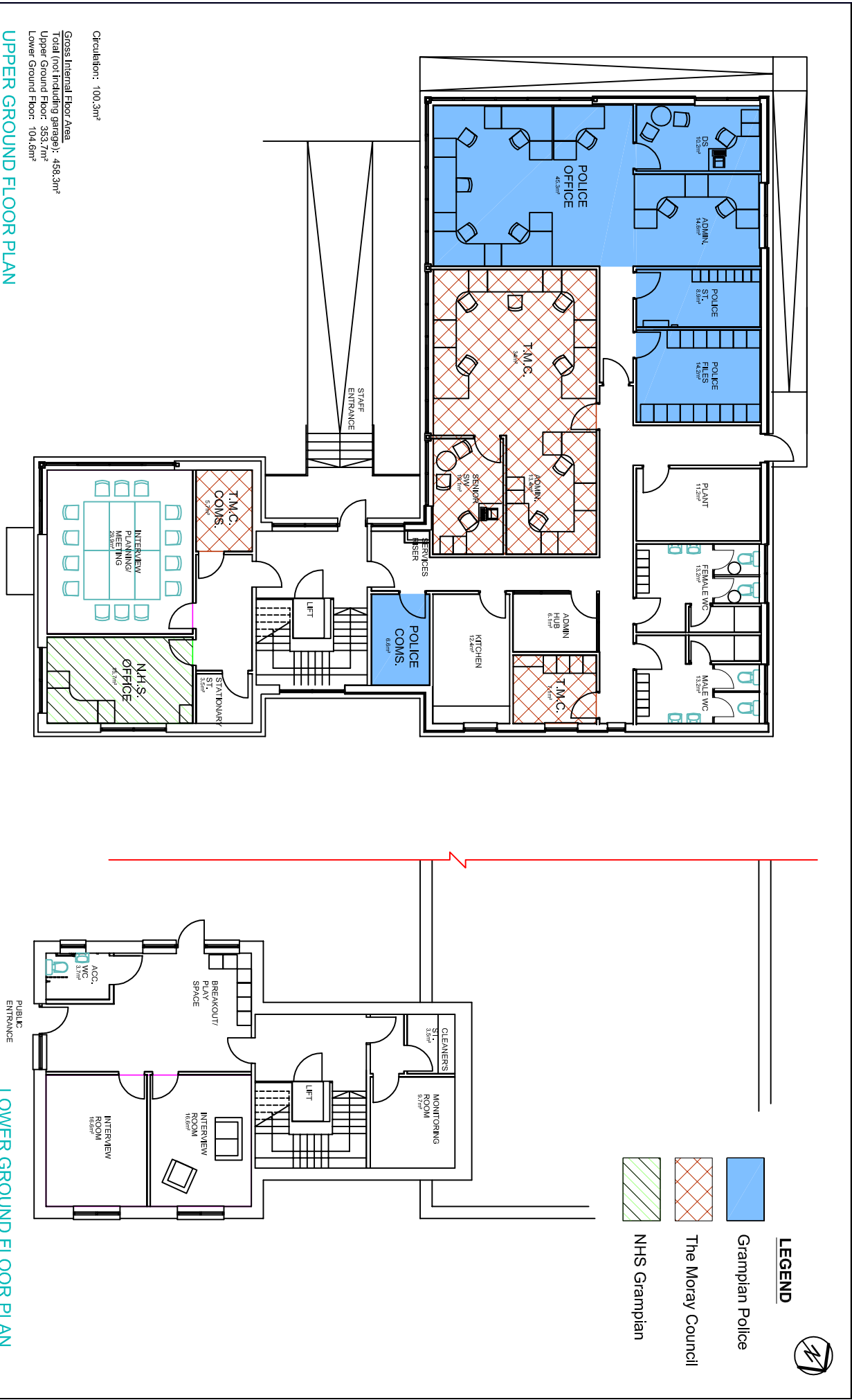


- NOTES
- 1. WRITTEN SIZES TAKE PREFERENCE OVER SCALED SIZES
- 2. LARGE SCALE DETAILS TAKE PREFERENCE OVER SMALL SCALE
- 3. ALL DIMENSIONS TO BE CHECKED ON SITE
- 4. ANY DISCREPANCIES IN DRAWINGS TO BE REFERRED TO THIS OFFICE FOR DECISION



LEGEND

- Grampian Police
- The Moray Council
- NHS Grampian

Circulation: 100.3m²
 Gross Internal Floor Area
 Total (not including garage): 458.3m²
 Upper Ground Floor: 353.7m²
 Lower Ground Floor: 104.6m²

UPPER GROUND FLOOR PLAN

LOWER GROUND FLOOR PLAN

REVISIONS		client	drawing	revision		date	drawn	scale
REV	INITIAL	DATE	DETAIL	The Moray Council		0816-04	sm	1:125
F	sm	25 07 09	Alterations to floor plan.	Floor Plans		29 04 09	sm	
G	sm	31 07 09	Alterations to Floor Plan.	drawing no.		0816-04	sm	
H	sm	02 09 09	Alterations to windows.	revision		I	sm	
I	sb	21 10 09	Alterations to plan.	date		29 04 09	sm	
			project	drawing no.		0816-04	sm	
			Hamilton Drive, Elgin	revision		I	sm	

THE SYNERGIE BUILDING
 FAIRWAYS BUSINESS PARK
 CASTLE HEATHER
 INVERNESS IV2 6AA

(T) 01 463 227587
 (F) 01 463 227588
 (E) OFFICE@WHITEANDMCGINN.COM

WHITE + MCGINN
 ARCHITECTS