



Tomintoul & Glenlivet Landscape Partnership

This document provides a summary of the proposals for a landscape partnership scheme. These proposals are in draft and will continue to be developed over the next 12-18 months. If you have any comments or would like more information please get in touch with Lindsay Robertson (Tomintoul and Glenlivet Development Trust).

What is a landscape partnership?

A landscape partnership is a scheme led by a partnership of local, regional and national interests which aims to conserve areas of distinctive landscape character. Such schemes, funded in part by the Heritage Lottery Fund, contribute to heritage conservation as an integral part of rural regeneration aiming to create a balanced approach to the management of landscape heritage at a landscape scale.

The Tomintoul & Glenlivet Landscape (T&GLP) partnership area covers approximately 200 square kilometres within the Cairngorms National Park. The area lies wholly within Moray and principally the land is in the ownership of the Crown Estate.

The project stems from the Tomintoul and Glenlivet Regeneration Strategy and Master Plan (2012). The plan aims 'to create the conditions for a flourishing relationship between people and the land, with the community able to meet more of its daily living and working needs locally :

- **Natural resources** can provide new employment opportunities in distilling, forestry, agriculture, sustainable land management, renewable energy, carbon capture and storage;
- The **landscape** has enormous tourism and visitor potential through wildlife, walking, sight seeing, fishing, mountain biking, photography and other outdoor pursuits;
- Tomintoul's rich **urban heritage** offers the prospect of a reinvigorated rural hub providing key services for residents and visitors.

The development of a T&GLP bid was identified within the action plan as a means of kick-starting this approach whilst ensuring the protection and enhancement of the natural assets on which the plan is based.

Who are we?

The Tomintoul & Glenlivet Development Trust is the lead partner for the Tomintoul & Glenlivet Landscape Partnership. The bid is managed by a Project Board made up as follows:

- Hamish Trench – Chair (Cairngorm National Park Authority)
- Lindsay Robertson (Tomintoul & Glenlivet Development Trust)
- John Shewan (Chair of Tomintoul & Glenlivet Development Trust)
- David Toovey (Tomintoul & Glenlivet Development Trust & local farmer)
- Eleanor Mackintosh (CNPA Board & local farmer)
- Faye Gonzales (Smiths Gore for Crown Estate)
- Piers Dixon (Royal Commission on the Ancient & Historic Monuments of Scotland)
- Will Boyd-Wallis (CNPA)

The Board will continue to expand and evolve as the Landscape Partnership develops.

Also involved are Spey District Salmon Fisheries Board, Spey Catchment Initiative, RSPB.

Draft Vision

At present this is a draft vision and objectives which will be further refined as new partners join and the project develops.

Our hidden landscapes are revealed, shared and enjoyed by people living and visiting here. The management of Tomintoul and Glenlivet's productive landscape is secured and continues to employ young people in traditional activities as well as new land based businesses. We celebrate and value the significance of our landscape heritage and its role in our future.

Draft Objectives

Productive¹ Landscape

- Sustain the management systems and people that support the character of this productive landscape.
- Be innovative in exploring new forms of productivity, inspired by and supportive of this landscape, creating new opportunities for employment, particularly for young people.
- Build understanding of this landscape, particularly in young people and visitors.
- Support skilled people in sharing their skills and others in developing their skills so that they are able to manage the landscape in the future.

¹ Productive here refers to a wide range of 'products & services' e.g. agricultural, sporting (moor & river), ecosystem services, creative arts & crafts, food & drink incl. whisky, healthy, skilled people?

Hidden Landscape

- Reveal and make accessible the secrets of our landscape and heritage that people don't know or have forgotten.
- Give people the skills they need to help them discover the hidden landscape and share its stories with others.
- Celebrate our heritage, the farming, keeping, fishing, whisky distilling, smuggling that have created today's landscape.

Built Heritage

- Reveal the significance of our built heritage, creating opportunities to access and discover the past lives lived in these places.
- Secure the future of our built heritage and its place in our landscape

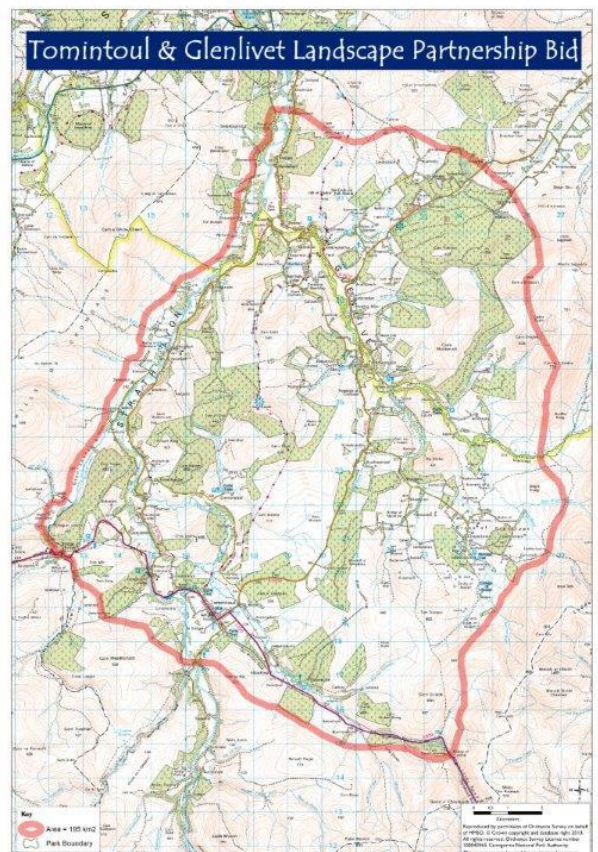


The special features of our Landscape Partnership area

A stunning landscape...

This is an area of rich hidden heritage and stories of hiding! From whisky smugglers to reivers (cattle rustlers), Catholic clergy to soldiers on the run many have sought refuge in the folds and curves of this landscape. It lies within Glenlivet Estate, the former property of the Dukes of Richmond and Gordon which was acquired by the Crown Estates in 1937.

The project area is roughly the shape of a diamond. Within the wider landscape it is surrounded by 4 significant hill ranges, the Cromdales to the west, the Ladder Hills to the east, the Glen Avon foothills to the south and Ben Rinnes and its south-western ridge to the north. Conifer woodland often extends over hill summits or is strung horizontally around the hill slopes. The



awkwardness and relationship between these woodlands and landform is a dominant characteristic of the area.

The landform forces the roads to accompany the river along narrow glens, on terraces above, river meanders or on hillsides looking down on to the floodplain. In many places a tracery of riparian woodland picks out both the major and minor watercourses. Bridges over these rivers are key orientation features. In many places the native broadleaf woodland echoes the natural shape and scale of the landform and drainage. The level and nature of agricultural activity is high and is key in defining the landscapes distinctiveness. Pasture and cropped ground reflect and emphasise the landform and interlock with woodland. The late 18th/19th century field pattern is marked throughout the area with older pre-improvement and historic field systems being clearly visible in some areas. Habitation in this landscape is closely linked to landform. Farms sit on river terraces and knolls and in the more open landscapes on tiny ridges or subtle changes of gradient. Many farms are made more prominent in the landscape by small woodland or a few large trees. The distilleries are prominent features in this landscape; however, they tend to sit awkwardly in the landscape owing to the large scale and expansive nature of the operation and the height of the buildings.

A rich cultural History...

This land has long been occupied and managed by people and there is considerable evidence of its past. In the 1960's a ploughman working his field discovered the Knock Earth House as it's now known. It is thought to have originally been a 'souterrain' or Earth House dating from the late Bronze Age. It's also likely that the site was built or adapted in the 18th Century to house an illicit whisky still, disguised by a corn-drying kiln built next to its entrance.

During the early 1800's, as many as 200 illegal stills were at work in Glenlivet, the secluded hills providing the perfect location for producing illicit spirit. Smugglers would head over the hills for Perth, Aberdeen and Edinburgh with the excisemen in hot pursuit. Now the area is renowned for its fine whisky.

Blairfindy Castle, built by the Earl of Huntly in 1564 was most likely used as a hunting lodge. There is also evidence that it was once key to controlling the main access to Gordon country from across the Ladder Hills. Nowadays it is a ruin and viewable only from a distance. Hunting and keepering are still key in the management of the moorland landscape.



Tomintoul takes its name from the Gaelic, Tom nat-Sabhail, meaning barn knoll or mound of the barn and is reputed to be the highest village in the Highlands. It is a planned village founded in 1777 by the 4th Duke of Gordon. Positioned near the crossing of the River Avon, on one of Wade's military roads and at the junction of several old drove roads, Tomintoul has always provided a stopover for weary travellers, cattle drovers and soldiers.

After the Reformation, Roman Catholics faced a difficult time in Scotland. In 1594 the Battle of Glenlivet saw the stand of the Catholic Earls of Huntly and Errol, commanding a force of only 1500-2000 horsemen, defeat the much larger Protestant royalist army led by the Earl of Argyll. Records suggest Argyll's force consisted of

around 6-10,000 infantrymen. It was a dramatic event. The battle represented a victory of artillery and horse over regular infantry and has passed in to local legend.

In its remote and hidden location, the Roman Catholic Seminary at Scalan, (named after the Gaelic *sgalan*, meaning turf roof), provided training for over 100 Roman Catholic priests from 1717 until 1799. With the help and support of the Dukes of Gordon, it played a vital role in keeping the Catholic faith alive in northern Scotland. On several occasions pupils and staff were forced to go into hiding from government troops. In



1746, following the Battle of Culloden, the Duke of Cumberland led a detachment of troops who burned the cottage to the ground. Scalan was subsequently rebuilt, and the site of the earlier cottage can still be identified to the west of the two-storeyed farmhouse and attached cottages. The cottages record an interesting heritage of their own through a series of graffiti marking which record agricultural uses and the weather! The cottages now house an impressive collection of agricultural implements.

The built heritage resource is expansive – the Lecht mine, the Bridge of Avon, Drumlin Castle, the Packhorse Bridge, Tomintoul drinking fountain and many more yet undiscovered archaeological sites – tell of the people that lived and worked these lands in the past and shaped them for today.

A haven for upland wildlife...

The resulting combination of natural habitats in the area provides a refuge for a wide variety of species. Low-lying woodlands, rivers, wetlands, open ground and hill top vegetation all create perfect conditions for many typical upland species including relatively rare birds of prey. The Rivers of the Avon and Livet are part of the River Spey SAC, designated for its internationally important populations of sea lamprey. Atlantic salmon, otter and fresh water pearl mussel. There are 5 Sites of Special Scientific Interest. The Estate is designated as an Area of Great Landscape Value and supports over 100 UK Biodiversity Action Plan Species including at least 23 priority species of conservation concern. In addition to the above these include red squirrel, pipestrelle bat, skylark, capercaillie, black grouse, linnet, pearl bordered fritillary, northern brown argus, juniper and aspen bracket fungus. The actively managed farmland provides perfect conditions for many species of wading bird have seen marked declines across the UK.

Valued by the Community...

The community in this area value their landscape heritage highly. The consultation for the National Park Plan (2010) asked communities with the Tomintoul & Glenlivet area what they would most like to protect. Most people want to preserve the views. Wildlife conservation is next most important, together with special features contributing to the local identity. They value the landscape as part of the good things about living in the area like local walks and also as a resource for tourism. 'Local landscape and wildlife should be protected - but not to the detriment of progress - a careful balance is required.'

What we will do

The partnership will work together as a single unit to deliver an integrated landscape management approach that delivers heritage conservation and understanding, traditional skills and learning as part of the wider strategy for rural regeneration. A range of projects is being developed to this end and these are briefly described in the table below. This is not an exhaustive list of what may be delivered through the scheme but represents the areas for action proposed.

All developments proposed through the LP must consider the 9 outcomes required by HLF as the principle funder, should we be successful. These are:

- Heritage is better managed
- Heritage is in better condition
- Heritage is identified/recorded
- People have developed skills
- People have learnt about heritage
- People have volunteered time
- Environmental impacts will be reduced
- More people and a wider range of people will have engaged with heritage
- Your local area/community will be a better place to live, work or visit.

Proposed timetable

1st Round Submission to HLF: May 2014

HLF 1st Round Decision: October 2014

Development Phase: Nov 2014 – Nov 2015 (optimistic)

2nd Round Submission to HLF: Nov 2015

HLF 2nd Round Decision: March 2016

Scheme commences: May 2016

Proposed Projects



Summary of project proposals being prepared for the HLF First Round Submission is provided below:

roject	Aim	Outputs & Outcomes
Integrated landscape mapping	To understand the landscape resources present and ensure decisions regarding change are suitably informed.	<ul style="list-style-type: none"> • Minimise conflict between land uses • Maximise the benefit of all actions taken • Increased understanding of landscape heritage – cultural and natural • Provide a long term planning tool for all future spatial planning in the LP area as part of the project legacy
Our water environment	To restore and enhance the River Avon tributary system and its associated water margins in order to improve its current condition, make it more resilient to future pressures and contribute to the holistic management of the larger Spey catchment of which is it part.	<ul style="list-style-type: none"> • Watercourses, their habitats and species better protected and enhanced e.g. lower water temperatures to safeguard juvenile salmon populations to ensure sustainability of the species in the future. • Enhanced and extended riparian woodland & contribution to landscape character • Improved water margin management including reduction in diffuse pollution sources • Morphological improvements and restoration (eg embankment lowering, removal of barriers to fish passage) • Improved wetland habitat • Improved upland water flow management and potential water holding capacity. • Increased local ownership and better understanding of the contribution of the water system to community and those downstream. • Local skills development
Community Heritage Project	Providing expertise to local communities to support them in identifying and understanding what of the cultural and natural heritage is important to them. Connecting community value and expert value. Provide training to enable people to survey and record e.g. archaeological survey or biological recording. The cultural heritage work will follow a similar model to Scotland’s Rural Past. Provide capital and expertise to enable identified priorities for action to be taken forward.	<ul style="list-style-type: none"> • Community ownership of project • Increased understanding and appreciation of heritage • Engagement across all age groups including schools. • Delivery of heritage survey data to relevant resources • Development of focussed areas of interest to provide access and interpretation for visitors

	These may be conservation work or excavation and reporting.	
The Peasie Project	Breeding densities of waders are important in the area. Advisory focus, looking to expand work and link into new SRDP, highlighting priority areas. Mixture of advice, demonstration and habitat management.	<ul style="list-style-type: none"> • Habitat improvements for biodiversity and ecosystem services • Retention of traditional farming systems which characterise the landscape • Training and demonstration opportunities • More diverse opportunities for income generations • Skills development • More resilience to the effects of flooding and climate change
Blairfindy Castle	Repair works to consolidate the ruin to make safe for external and internal public access and allow interpretation. Link to Glenlivet distillery visitor centre and local walks.	<ul style="list-style-type: none"> • Conservation of a scheduled ancient monument and B listed castle allowing public access. • Training opportunities in traditional building skills such as lime pointing • Community members trained as volunteer guides. • Improvement to the local environment for the local community and visitors to the Glenlivet distillery • Potential to introduce a proportion of the 40,000+ to the distillery to the heritage of the wider area • School groups invited to visit to learn about history.
Interpretation and Technology	Delivery of an area wide integrated interpretation strategy. One method of delivery will include the innovative use of digital technology in the landscape bringing the voices of the past to life as visitor travel through the landscape. Co-ordination of signage, materials e.g. leaflets, website & web based resources.	<ul style="list-style-type: none"> • An innovative content management system shared across the partnership • Digital media to enable partners to deliver content and people to access it across the area. Content creation by visitors through existing mobile technology. • Clear, multi-layered interpretation appropriate to identified audiences • Increased understanding and awareness of heritage • Training in interpretation and digital technology • More people, particularly young people aware of the areas heritage. • Potential for increased economic activity in the area as a result of digital technology development • Impact of traditional interpretation in landscape minimised
Oral History	Capturing memories, stories, and traditions from older generations before they are lost. Inter-generational working. Material for delivery through interpretation including technology project	<ul style="list-style-type: none"> • More people have volunteered time to heritage activities • A greater understanding of the areas heritage, particularly traditions and people • Volunteers trained in oral history skills and equipment • Heritage is identified and recorded • More people engaged with their heritage • Improved connection between younger and older generations

Scalan	Promoting the seminary and improving access and interpretation. Connecting to cottage and outbuildings housing the agricultural collection to be conserved. Offering interpretation of the history of agriculture in the area. Connecting Scalan with Tomintoul Museum. Provision of local craft demonstrations.	<ul style="list-style-type: none"> • Increased access to the site • Improved interpretation increasing understanding • Stronger visitor engagement with the local areas • Training opportunities in traditional local skills and crafts • Heritage is identified and recorded • Heritage is better condition • Heritage is better managed
Tomintoul Museum	Creation of a focal point in the area for visitors, locals, volunteers and groups. Combining landscape heritage museum & visitor information centre with accommodation for T&GDT and LP staff teams. Could provide exhibitions, meeting/teaching space, hub for area wide information and connections to other sites.	<ul style="list-style-type: none"> • Central access point to landscape heritage and visitor information • Focus for interactive interpretation technology, volunteers trainees, visiting groups and special interest groups • Key component of regeneration of Tomintoul • More people and a wider range of people are engaged with the areas heritage
Plantation Woodlands	Influence and test new approaches to the forest plan policies to leave a lasting landscape legacy which resolves the negative aspects of historic plantation forestry.	<ul style="list-style-type: none"> • Make plantation woodland a positive contributor to landscape character in the long term • Multiple benefits for habitats and species, access, community involvement and the enhancement of agricultural and forestry productivity. • Share an innovative approach with other land managers/ foresters
Access Connections	Working in partnership with the Cairngorm Outdoor Access Trust. Improving the footpath network in the area to enable more people and a wider range of abilities to access the areas landscape heritage	<ul style="list-style-type: none"> • Extend the Speyside Way spur to Tomintoul from the main Speyside way route increasing the number of people visiting and staying in Tomintoul • Footpaths to improve connections between and to key heritage sites • Provide dedicated paths which meet the needs of residents and visitors. • Increased opportunities for outdoor access. • Training programme in footpath construction and maintenance • Creation of employment opportunities
Training Programme	A targeted training programme to focus on young people and	<ul style="list-style-type: none"> • Increased number of young people entering land management careers • Wider understanding of the importance of land

	traditional land management skills of the area as land managers of the future	<p>management to the landscape character of the area</p> <ul style="list-style-type: none"> • Young people retained or introduced to the area
Education Programme	<p>A co-ordinated programme of primary, higher and tertiary education opportunities drawn from across all projects. Working in partnership with education establishments and the CNPA.</p>	<ul style="list-style-type: none"> • Many opportunities offered by other projects to create a varied and interesting programme of outdoor education. • Chance for every pupil in local catchment from 5-16 to get involved • Landscape heritage recognised as teaching resource and increase in utilisation • More children accessing the landscape
Volunteering	<p>Volunteers to help with cultural/natural heritage interpretation, surveys, audits and recording. To include volunteer training.</p>	<ul style="list-style-type: none"> • Heritage is identified and recorded • Community has ownership of heritage and skills to look after it. Increased community pride. • More people engaged with their heritage • More volunteers involved in researching and conserving the heritage • Opportunities for Volunteer Rangers working with CE Rangers. • Volunteer holidays
Celebration & Inspiration	<p>T&G is a special place with a heritage worth celebrating. It is a productive place which inspires innovation and creativity.</p>	<ul style="list-style-type: none"> • Annual events programme which highlights and celebrates what is special • New visitors brought to the area and associated economic impact • Increased community pride • New enterprises and activities being developed