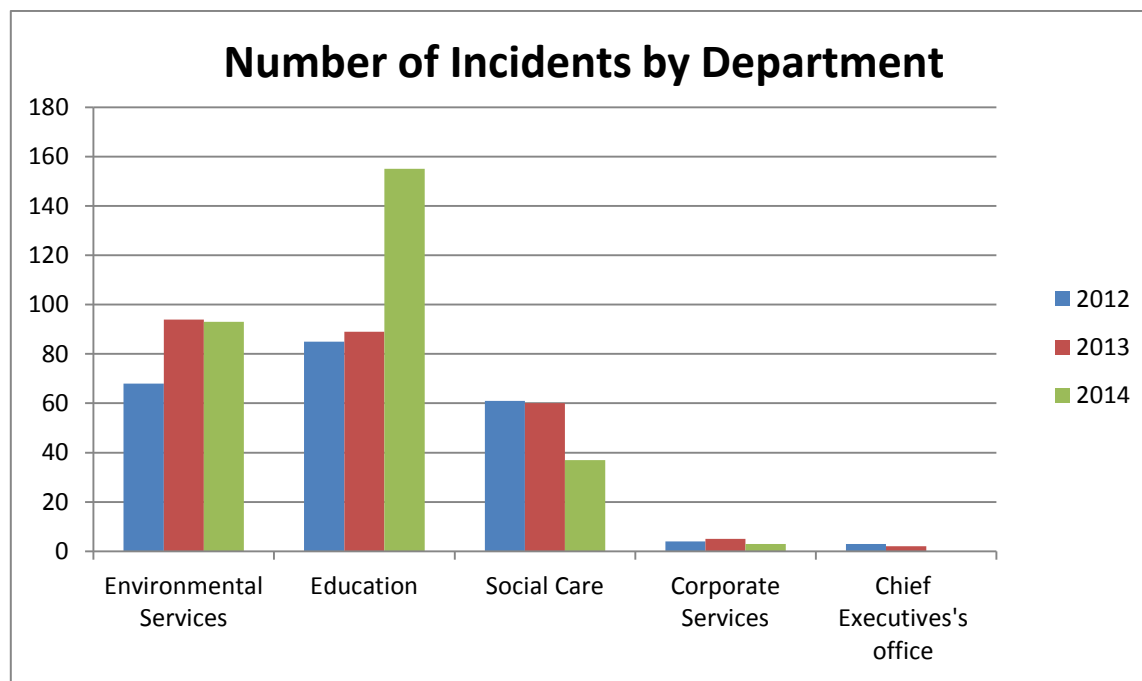


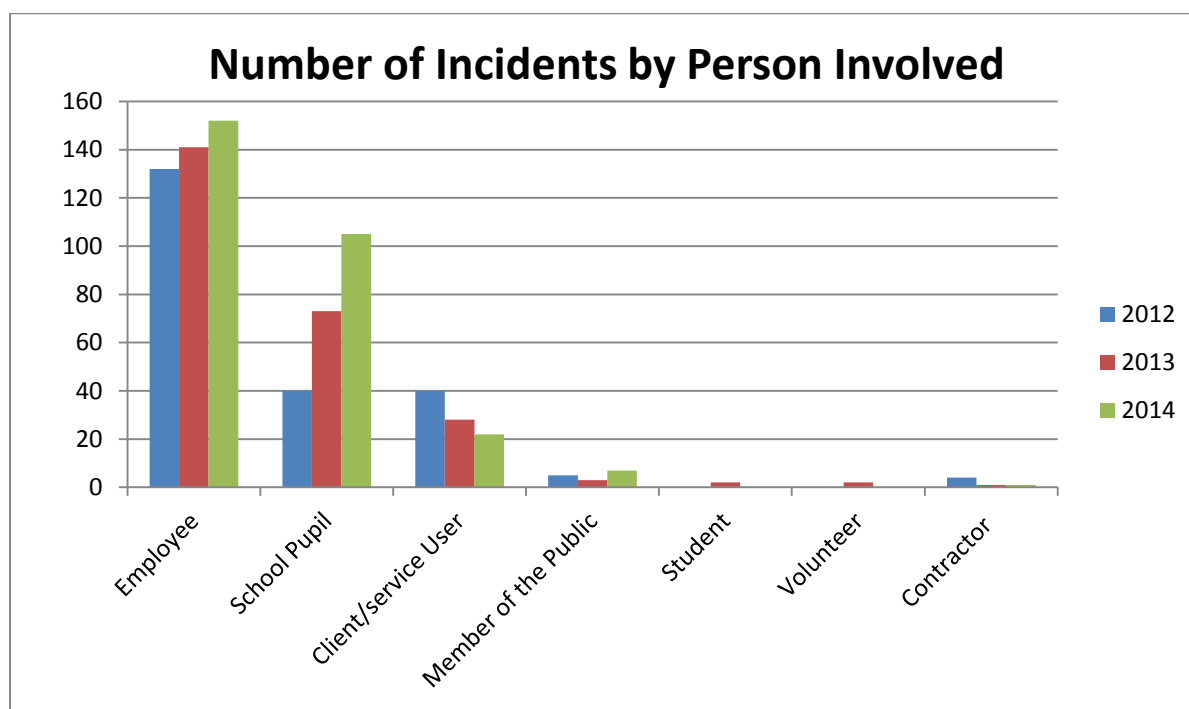
HEALTH AND SAFETY INCIDENTS 2012 TO 2014

Department	2012	2013	2014
Environmental Services	68	94	93
Education	85	89	155
Social Care	61	60	37
Corporate Services	4	5	3
Chief Executive's office	3	2	
Total	221	250	288



Education has seen the largest rise in the number of reported Health and Safety incidents between 2013 and 2014. This was largely down to the rise in the number of incidents of accidents and injuries being reported which has almost double since 2013. Environmental Services has seen a slight decline between 2013 and 2014 after seeing a significant increase between 2012 and 2013. Social Care has seen a sharp decline in the number of incidents being reported between 2012 and 2013 largely because of a decline in slip and falls on the same level and fewer incidents involving being hit by a moving/falling/flying object.

Classification of Person involved	2012	2013	2014
Employee	132	141	152
School Pupil	40	73	105
Client/service User	40	28	22
Member of the Public	5	3	7
Student		2	
Volunteer		2	
Contractor/ agency staff	4	1	2
Total	221	250	288



There has been a slight increase in the number of employees being injured at work each year between 2012 and 2014. The number of incidents being reported each year for school pupils has increased sharply between 2012 and 2014. 12 (11%) of these accidents happened during a science or home economic lesson. 50 (48%) of these incidents occurred during a PE lesson or sporting event. 4 incidents occurred during a workshop. There has been a decline in the number of incidents being reported involving client/service users over the same period.

Incident Type	2012	2013	2014
Slip, trip or fall on the same level	79	84	85
Hit by a moving/falling/flying object	30	38	29
Manual handling	40	36	27
Hitting a fixed or stationery object	23	29	23
Damage to property/equipment/vehicles	2	9	
Defective equipment	4	9	7
Fall from a height	19	8	14
Exposed to a harmful substance	5	7	6
Exposed to fire, temperature extremes or explosion	8	7	6
Trapped by something collapsing/overturning	1	6	4
Attack by an animal		5	4
Contact with moving machinery/material being machined	4	4	5
Transport	2	3	5
Contact with electricity		2	
Other	1	2	70
Inappropriate equipment used		1	
Needlestick contact	3		1
Poolside incident/work near water/other asphyxiation			2
Total	221	250	288

The biggest increase in accidents between 2013 and 2014 has been the number of incidents being classed as 'other', this could be further considered when future returns are filed. There were 4 animal attacks incidents during the period each of them involved dog bites and 2 of the incidents required medical treatment. There were 10 dangerous occurrences 3 involving the cutting of grass. 5 dangerous occurrences involved a vehicle.

Incident Type	Environmental Services	Education	Social Care	Corporate Services	Chief Executive's Office	Total
Slip, trip or fall on the same level	17	57	11			85
Other	14	40	15	1		70
Defective equipment	5	1	1			7
Hitting a fixed or stationery object	7	15		1		23
Hit by a moving/falling/flying object	12	16	1			29
Exposed to fire, temperature extremes or explosion	1	5				6
Exposed to a harmful substance	3	3				6
Fall from a height	7	7				14
Manual handling	13	7	6	1		27
Contact with moving machinery/material being machined	1	3	1			5
Trapped by something collapsing/overturning	4					4
Attack by an animal	3	1				4
Poolside incident/work near water/other asphyxiation	2					2
Hit by a vehicle	4		1			5
Needlestick contact			1			1
Total	93	155	37	3		288

Incident type	Agency Staff	Client/Service User	School Pupil	Member of Public	Contractor	Employee	Total
Slip, trip or fall on the same level	1	8	32		1	43	85
Other		12	33	1		24	70
Defective equipment		1		1		5	7
Hitting a fixed or stationery object			13			10	23
Hit by a moving/falling/flying object		1	12	1		15	29
Exposed to fire, temperature extremes or explosion			5			1	6
Exposed to a harmful substance			3			3	6
Fall from a height			4	3		7	14
Manual handling			3			24	27
Contact with moving machinery/material being machined						5	5
Trapped by something collapsing/overturning				1		3	4
Attack by an animal						4	4
Poolside incident/work near water/other asphyxiation						2	2
Hit by a vehicle						5	5
Needlestick contact						1	1
Total	1	22	105	7	1	152	288

The graphs shows 55% of client/service users are reporting accidents under the 'other category' while only 16% of employees have incidents classified under that label.

INCIDENTS OF VIOLENCE ANF AGGRESSION 2012-2014

	2012	2013	2014
Maybank	365	428	375
Education	421	365	414
Community Care			
All other services	49	88	